



PBARS
RANCH
The Little Ranch
with Big Genetics

Proof

of Progress

Limousin Sale

Sunday, October 26th, 2008
1:00 PM • at the Ranch • Sand Springs, Oklahoma



Proof of Progress

Limousin Sale

Sunday, October 26th, 2008 • 1:00 PM
at the Ranch • Sand Springs, Oklahoma

**Selling 104 Head of
Limousin & LimFlex cattle**
Pairs - Breds - Open Heifers - Bulls

Sale Consultants:

American Cattle Services, Inc.
Ken Holloway, 580.581.7652
acs@americancattleservices.com
www.americancattleservices.com



Mark Smith
phone/fax: 515.965.1458
mobile: 515.229.5227



Sale Management:

**R&R
Marketing
Company**

Randy Ratliff
615.791.8982 • Fax: 615.791.8983
cell: 615.330.2735
3110 McMillan Road
Franklin, TN 37064-9373
Sales@RRMktg.com • www.RRMktg.com



(L#2845)

Schedule:

Saturday, October 25th

Noon Cattle Available for viewing
5:00 pm Refreshments & complementary supper
6:00 pm Continued refreshments & live entertainment

Sunday, October 26th

8:00 am Coffee & pastries & viewing of cattle
11:00 am Complementary lunch
1:00 pm **Proof of Progress Sale**

Auctioneers:

Bruce Brooks & Sonny Booth

Sale Day Phones:

Randy Ratliff, 615.330.2735
Bob Getz, 918.346.2437
Mark Smith, 515.229.5227
Ken Holloway, 580.581.7652

Hotel Accommodations:

Best Western, 918.245.4999
81st W. Ave. Exit
Hampton Inn, 918.245.8500
81st W. Ave. Exit
Holiday Express, 918.585.7000
Gilcrease Museum Road

PBARS

RANCH

Paul Sisemore, owner
802 Overlook Drive
Sand Springs, OK 74063
918.241.7257
www.pbars.net
psisemore@custofab.com
Ranch Manager, Bob Getz
918.346.2437



**R&R
Marketing
Company**

Randy Ratliff
615.791.8982 • Fax: 615.791.8983
cell: 615.330.2735
3110 McMillan Road
Franklin, TN 37064-9373
Sales@RRMktg.com • www.RRMktg.com



(L#2845)

Dear Limousin Enthusiasts,

On behalf of R & R Marketing Company it is an honor to welcome everyone to the first ever Limousin Production Sale for P Bar S Ranch. This Proof of Progress sale is one that you will not want to miss. The P Bar S Ranch was established in 1993 and they been very aggressive since in creating the very finest Limousin and Limflex genetics. Owner Paul Sisemore has developed quite a seedstock program with his very much qualified manager Bob Getz and cowherd manager Elgin Elmore. All three gentleman combined have worked together as a team in mating, creating and developing this great herd of cattle. They laid their foundation of their herd with the strongest base of maternal cows they could find. They have never once compromised on quality and have always kept soundness of structure and the complete design of the cattle in mind when making investments for the future and creating new genetics. It is a known fact that when you see cattle at shows or sales if they carry the PBRS prefix, they will be some of the very best you will have a chance to see.

In this first ever sale it is loaded up with only their very best! As you view this remarkable catalog you will quickly realize they have done their homework over the years. These sale cattle represent the "Proof of Progress" for the P Bar S Ranch. There is definitely proof in the product that if you like Limousin cattle that are loaded with muscle and power, they have them. If you want cattle that are moderate in their frame, deep bodied and high marbling, they have them. If you want cattle that combine all the important economic traits then make plans to join us on October 26. You will be greeted at the gate of one of the prettiest and most pristine Ranches in the state of Oklahoma. The entire crew takes pride in the creation of one of the breeds finest purebred seedstock ranches.

We look forward to your interest in this sale and are more than willing to visit with you on any of the lots or just to visit about the sale.

Sincerely,
Randy Ratliff
R & R Marketing Company



Paul Sisemore, owner
802 Overlook Drive
Sand Springs, OK 74063
918.241.7257 • www.pbars.net
psisemore@custofab.com
Ranch Manager, Bob Getz 918.346.2437

Dear Friends,

It is a great pleasure to welcome you to our first production sale at the P-BAR-S "Little Ranch with the Big Genetics." Whether you are interested in purchasing cattle or just enjoy good fellowship with salt of the earth people, Welcome!

P Bar S is located in the rolling hills of Osage county cattle country. The ranch was started with a dream and vision that started at a very young age. Although it has taken many years of preparation, we have arrived. Actual cattle purchased started 15 years ago and has continued with the purchase of the best genetics we can find. We like to consider ourselves as cattle breeders and not just cattle propagators. We are offering this group of cattle to you as our Proof of Progress.

As you look through the catalog you will see modern genetics and top of the line pedigrees. Please notice that a majority of the cattle carry the PBRS prefix. We are very proud of that fact and hopefully you can benefit from our fifteen years of work.

If there is anything at all that we can assist you with or anything that we can do to make your visit to the ranch more enjoyable, please do not hesitate to let us know.

Paul Sisemore
Bob Getz



Bob Getz

Paul Sisemore



Elgin Elmore

Yuca

Roger

Slim

Roy



Sunday October 23, 2008

3

Carrouseles
PINA
COLADA
Family

2006 Denver National Champion Female



LOT 1 -
PBRS Touch of Class 797T



morris

LOT 2 - PBRS Touch Me Gently 798T





**LOT 3 -
PBRs Tin Cup 792T**

morris

PBRs Touch of Class 797T *Lot 1*

PB Limousin (100/87.6) Heifer 11.20.07 PBRs 797T
NPF 1904757 Horned Double Black

GPFF BLAQUE RULON BLACK DIAMOND
DHVO DEUCE 132R QUAIL RUN RAMONA BP
AMY JO DHAN 20L BLACK CAT DHAN 152G
GPFF AMBER JO

AUTO BLACK DAKOTA 129J EXLR DAKOTA 353G
CARROUSELS PINA COLADA DFCL JET SET BPC 34Y
ELMW GINNIE P58G TCDT MR T.D'S POWER PACK
ELMW POLLED ECSTASY 67E#82

CE	BW	WW	YW	MA	CM	SC	DC	CW	RE	YG	MS	SMI
EPDs 6	3.3	55	99	23	2	0.8	14	33	0.50	0.04	-0.07	44
ACC. P	P	P	P	P	P	-	P	P	P	P	P	-

PBRs Touch Me Gently 798T *Lot 2*

PB Limousin (100/87.6) Heifer 11.20.07 PBRs 798T
NPF 1904758 Homozygous Polled Double Black

GPFF BLAQUE RULON BLACK DIAMOND
DHVO DEUCE 132R QUAIL RUN RAMONA BP
AMY JO DHAN 20L BLACK CAT DHAN 152G
GPFF AMBER JO

AUTO BLACK DAKOTA 129J EXLR DAKOTA 353G
CARROUSELS PINA COLADA DFCL JET SET BPC 34Y
ELMW GINNIE P58G TCDT MR T.D'S POWER PACK
ELMW POLLED ECSTASY 67E

CE	BW	WW	YW	MA	CM	SC	DC	CW	RE	YG	MS	SMI
EPDs 6	3.3	55	99	23	2	0.8	14	33	0.50	0.04	-0.07	44
ACC. P	P	P	P	P	P	-	P	P	P	P	P	-

PBRs Tin Cup 792T *Lot 3*

PB Limousin (100/87.6) Bull 11.16.07 PBRs 792T
NPM 1904756 Double Polled Double Black

GPFF BLAQUE RULON BLACK DIAMOND
DHVO DEUCE 132R QUAIL RUN RAMONA BP
AMY JO DHAN 20L BLACK CAT DHAN 152G
GPFF AMBER JO

AUTO BLACK DAKOTA 129J EXLR DAKOTA 353G
CARROUSELS PINA COLADA DFCL JET SET BPC 34Y
ELMW GINNIE P58G TCDT MR T.D'S POWER PACK
ELMW POLLED ECSTASY 67E

CE	BW	WW	YW	MA	CM	SC	DC	CW	RE	YG	MS	SMI
EPDs 6	3.3	55	99	23	2	0.8	14	13	0.50	0.04	-0.07	44
ACC. P	P	P	P	P	P	-	P	P	P	P	P	-

LOT 1, 2, & 3 - Greatness is what you get when you mate a national champion to another national champion! Highlighting this first ever sale are three full siblings that represent one of the finest matings ever created in our breed. They are sired by the two time national champion sire DHVO Deuce, a powerful GPFF Blaque Rulon son that has created much interest in our breed. Their dam is Carrousel's Pina Colada, a past national champion female and a donor that has been appraised at \$80,000. P Bar S Ranch is proud to have Pina Colada has one of their lead donors and she has definitely earned her right as one of the premier brood matrons in our entire breed. These two heifers and one bull sired by DHVO Deuce will make your mouth water when you get your eyes on them. They are near perfect in their conformation and fault free no matter how you judge them.



LOT 4 -
PBRs Uppity Lady 811U



LOT 5 -
PBRs Unique Style 813U

LOT 4, 5, 6 & 7 - For those cattle breeders that appreciate Limflex cattle we definitely have a treat for them with these four full siblings. They are 50% Limflex progeny sired by the popular and big numbered Angus sire, Basin Franchise. These four siblings are moderate in their frame, very deep bodied and soft in their pasterns. They are very efficient cattle that will be easy to maintain and many of us agree they will be highly sought after by the breed's most aggressive cattleman.

PBRs Uppity Lady 811U

Lot **4**

Lim-Flex (50/43.1) Heifer 2.20.08 PBRs 811U
LFF 1910342 Homozygous Polled Homozygous Black

BASIN FRANCHISE P142	C A FUTURE DIRECTION 5321 BASIN CHLOE 812L	GAR PRECISION 1680 C A MISS POWER FIX 308 GARDENS EXPEDITION BASIN CHLOE 6198
CARROUSELS PINA COLADA	AUTO BLACK DAKOTA 129J ELMW GINNIE P58G	EXLR DAKOTA 353G DFLC JET SET BPC 34Y TCDT MR T.D'S POWER PACK ELMW POLLED ECSTASY 67E

	CE	BW	WW	YW	MA	CM	SC	DC	CW	RE	YG	MS	SMI
EPDs	8	-0.8	48	97	27	3	-	-	23	0.00	0.19	0.11	47
ACC.	P	P	P	P	P	P	-	-	P	P	P	P	-

PBRs Unique Style 813U

Lot **5**

Lim-Flex (50/43.1) Heifer 2.21.08 PBRs 813U
LFF 1910343 Double Polled Homozygous Black

BASIN FRANCHISE P142	C A FUTURE DIRECTION 5321 BASIN CHLOE 812L	GAR PRECISION 1680 C A MISS POWER FIX 308 GARDENS EXPEDITION BASIN CHLOE 6198
CARROUSELS PINA COLADA	AUTO BLACK DAKOTA 129J ELMW GINNIE P58G	EXLR DAKOTA 353G DFLC JET SET BPC 34Y TCDT MR T.D'S POWER PACK ELMW POLLED ECSTASY 67E

	CE	BW	WW	YW	MA	CM	SC	DC	CW	RE	YG	MS	SMI
EPDs	8	-0.8	48	97	27	3	-	-	23	0.00	0.19	0.11	47
ACC.	P	P	P	P	P	P	-	P	P	P	P	P	-



**LOT 6 -
PBRs Qtopian Queen 825U**



LOT 7 - PBRs Undisputed 808U

PBRs Utopian Queen 825U *Lot 6*

Lim-Flex (50/43.1) Heifer 3.23.08 PBRs 825U
LFF 1910344 Homozygous Polled Homozygous Black

C A FUTURE DIRECTION 5321 GAR PRECISION 1680
BASIN FRANCHISE P142 C A MISS POWER FIX 308
BASIN CHLOE 812L GARDENS EXPEDITION
BASIN CHLOE 6198

AUTO BLACK DAKOTA 129J EXLR DAKOTA 353G
CARROUSELS PINA COLADA DFCL JET SET BPC 34Y
ELMW GINNIE P58G TCDT MR T.D'S POWER PACK
ELMW POLLED ECSTASY 67E

	CE	BW	WW	YW	MA	CM	SC	DC	CW	RE	YG	MS	SMI
EPDs	8	-0.8	48	97	27	3	-	-	23	0.00	0.19	0.11	47
ACC.	P	P	P	P	P	P	-	-	P	P	P	P	-

PBRs Undisputed 808U *Lot 7*

Lim-Flex (50/43.1) Bull 2.17.08 PBRs 808U
LFM 1910341 Double Polled Homozygous Black

C A FUTURE DIRECTION 5321 GAR PRECISION 1680
BASIN FRANCHISE P142 C A MISS POWER FIX 308
BASIN CHLOE 812L GARDENS EXPEDITION
BASIN CHLOE 6198

AUTO BLACK DAKOTA 129J EXLR DAKOTA 353G
CARROUSELS PINA COLADA DFCL JET SET BPC 34Y
ELMW GINNIE P58G TCDT MR T.D'S POWER PACK
ELMW POLLED ECSTASY 67E

	CE	BW	WW	YW	MA	CM	SC	DC	CW	RE	YG	MS	SMI
EPDs	8	-0.8	48	97	27	3	-	-	23	0.00	0.19	0.11	47
ACC.	P	P	P	P	P	P	-	-	P	P	P	P	-



**LOT 8 -
PBRS Unique Style 813U**

AUTO Dollar General 122R

PBRS Tea Time 729T

Lot **8**

PB Limousin (100/88.0) Heifer 4.06.07 PBRS 729T
NPF 1897468 Homozygous Polled Double Black

LVLS SECRET WEAPON 4408K LVLS FARMER 4G
AUTO DOLLAR GENERAL 122R LVLS 408H
AUTO KYRIA 232K AUTO HACKETT 702H
WULFS HAPPINESS 8136H

AUTO BLACK DAKOTA 129J EXLR DAKOTA 353G
CARROUSELS PINA COLADA DFLC JET SET BPC 34Y
ELMW GINNIE P58G TCDT MR T.D'S POWER PACK
ELMW POLLED ECSTASY 67E

	CE	BW	WW	YW	MA	CM	SC	DC	CW	RE	YG	MS	SMI
EPDs	6	1.4	53	98	28	4	0.4	12	30	0.30	0.12	0.09	48
ACC.	P	32	27	15	09	P	09	P	P	P	P	P	-

Here is a homozygous polled daughter of Carrouseles Pina Colada that has much breeding potential. She is sired by the highly syndicated homozygous sire AUTO Dollar General 122R. She has a great set of epd's with a 1.4 for birth, 98 for yearling weight, 28 for milking ability and marbling of 0.9.

Proof of Progress Limousin Sale





MAGS PARIS



MAGS Twain

6 Embryos

Lot 9

Homozygous Polled • Homozygous Black
50% Lim-Flex

MAGS TWAIN AUTO DOLLAR GENERAL 122R LVLS SECRET WEAPON 4408K
THOMAS PATRICIA 1911 AUTO KYRIA 232K
GAR PRECISION 1680
THOMAS PATRICIA 1176

MAGS PARIS DOUBLE G MARKSMAN 8776 DOUBLE G MARKSMAN
MAGS LUANNA 902L MISS DOUBLE G 8776
EXLR DAKOTA 353G
MAGS GARLAND

	CE	BW	WW	YW	MA	CM	SC	DC	CW	RE	YG	MS	SMI
EPDs	6	1.0	55	102	3	0.3	-	6	34	0.03	0.26	0.28	55
ACC.	P	P	P	P	P	P	-	P	P	P	P	P	-

Featured in this sale will be the selling of 6 embryos by the highly syndicated sire MAGS Twain. MAGS 639P is a homozygous polled, homozygous black 50% Limflex donor. She is sired by Double G Marksman, a big numbered and powerful Angus sire. This female is from a daughter of EXLR Dakota from MAGS Garland. This donor cow heads up the progressive P Bar S Ranch donor pool and rightfully so. She has a 1.3 for birth, 91 for yearling weight and 23 for milking ability. She has earned a 0.17 for marbling and a 50 for MTI. She has an Adj. IMF of 7.35 that makes her one of the highest marbling Limflex females in the entire breed. When mated to the big numbered and amazing homo/homo Limflex 50% sire, MAGS Twain, the results will be astounding. P Bar S Ranch is giving the buyer the opportunity to select 6 eggs from this premier mating.



MAGS Reva



MAGS Scotland

Embryos *Lot* **10**

Homozygous Polled • Homozygous Black
Lim-Flex 50&=%

MAGS SCOTLAND
BR MIDLAND
MAGS MARQUEE

TWIN VALLEY PRECISION
BR ROYAL LASS 7036-19
EXLR DAKOTA 353G
MAGS JEWEL

MAGS REVA
EF MAIN STAY 541M

AUTO BLACK DAKOTA 129J
EXLR 231J
GAR PRECISION 1680
VF 1483 BEMINDFULMAID 7025

TWIN EAGLESBEMINDMAID 638K

	CE	BW	WW	YW	MA	CM	SC	DC	CW	RE	YG	MS	\$MI
EPDs	7	-0.5	43	85	19	3	0.0	6	10	-0.12	0.09	0.28	52
ACC.	P	P	P	P	P	P	P	P	P	P	P	P	-

This 50% Limflex female has earned an amazing set of numbers to go with her near perfect conformation. She is sired by the once reserve national champion sire EF Main Stay 541M and from a GAR Precision 1680 daughter. This young Limflex donor has a low birth of -0.7, 0.18 for marbling and 46 for MTI. She also scanned a 5.03 for IMF and still maintained a 13.2 for REA. It is females of this caliber that are created the new kind of Limousin. They are moderate, easy doing and very complete in their profile. This young Limflex donor is strong topped, big boned and square hipped. She has been flushed to the reigning 2008 All American Futurity grand champion Limflex sire and once appraised at \$112,000. The first calves from this mating will be as right for the times as anything you would ever want to invest in.



SPRING BORN

Heifer Calves



LOT 11 -
PBR Ultra 816U



LOT 12 -
PBR U Wish 819U

PBR Ultra 816U

Lot 11

Lim-Flex (25/23.2) Heifer 2.23.08 PBR 816U
LFF 1909333 Homozygous Polled Homozygous Black

DCC RITO 619 OF 6002 3J24
DCC RITA 3J24 OF 112 221
G A R INTEGRITY
BON VIEW NEW DESIGN 1407
G A R PRECISION 1019
RITO 112 OF 2536 RITO 616
DCC IDEAL 221 OF 692 8375

MAGS SPECKLES
TNUH BLUE PRINT 245H
PRECISION PET 3 OF RWR
WADDLES COBALT 3106
TNUH MISS C245
GAR PRECISION 1680
AMBUSHES AMBER 2 OF RWR

	CE	BW	WW	YW	MA	CM	SC	DC	CW	RE	YG	MS	SMI
EPDs	7	-0.8	45	90	31	-1	-	-	18	0.09	0.09	0.25	52
ACC.	P	P	P	P	P	P	-	-	P	P	P	P	-

Homozygous polled and homozygous black is this amazing 25% Limflex heifer from the heart of the P Bar S Ranch program. Ultra is sired by DCC Rito 619 of 6002 3J24, a premier Angus sire and son of GAR Integrity. She is from a really nice Limflex 50% daughter of the deceased TNUH Blue Print back to a Precision daughter. This young heifer is more than homozygous for both traits, she also has a 31 for milk, 0.25 for marbling and 52 for MTI. This heifer has it all and when you see her in person, we know you will agree.

PBR U Wish 819U

Lot 12

PB Limousin (87/77.7) Heifer 3.01.08 PBR 819U
NPF 1909334 Homozygous Polled Homozygous Black

MAGS SOLOMON
CARROUSELS PUR POWER
CARROUSELS NEARLY PERFECT
GPF BLAQUE RULON
TUBB FIRST CLASS 666F
COLE FIRST DOWN 46D
COLE CATALINA 3309C

TYEJDB SHANIA 426S
EXLR INDEPENDENCE
TYEJ SHANIA
EXLR GUARDIAN 461K
EXLR 5170H
MAGS KABOOM
NBLF SHANIA 128L

	CE	BW	WW	YW	MA	CM	SC	DC	CW	RE	YG	MS	SMI
EPDs	-	-	-	-	22	-	-	-	36	0.51	0.02	0.01	-
ACC.	-	-	-	-	P	-	-	-	P	P	P	P	-

U Wish is appropriately named! She is an amazing homozygous polled, homozygous black 87% Limousin female. She is very deep bodied and has a strong brood cow look to her. U Wish is sired by the Jones & Benson sire MAGS Solomon, a homozygous polled son of Pure Power. When you get a chance on sale day, take a close look at this heifer's depth of rib and volume. She stands correct and has the desirable look of what a future donor cow should look like.



**LOT 13 -
PBRs Upper Clas 841U**



**LOT 14 -
PBRs Upscale 805U**

PBRs Upper Class 841U

Lot **13**

PB Limousin (100/88.6) Heifer 4.06.08 PBRs 841U
NPF 1909339 Double Polled Homozygous Black

DHVO DEUCE 132R GPFF BLAQUE RULON BLACK DIAMOND
AMY JO DHAN 20L QUAIL RUN RAMONA BP
BLACK CAT DHAN 152G
GPFF AMBER JO

MAGS PRIMROSE D&M HOGAN 539H D&M CLASS ACT 563D
MAGS MAIZIE D&M MISS HUGO 539E
EXLR DAKOTA 353G
MAGS GO IN STYLE

	CE	BW	WW	YW	MA	CM	SC	DC	CW	RE	YG	MS	SMI
EPDs	6	2.2	59	98	29	2	1.0	12	26	0.45	-0.02	0.01	48
ACC.	P	P+	P	P	P	P	-	-	P	P	P	P	-

841U is a homozygous black daughter of the two time national champion sire DHVO Deuce. She is long bodied, level from her hooks to her pens and very eye appealing. We love the pedigree, the overall design and complete balance of this young replacement heifer.

PBRs Upscale 805U

Lot **14**

PB Limousin (100/87.1) Heifer 21.11.08 PBRs 805U
NPF 1909329 Polled Homozygous Black

LVLS SECRET WEAPON 4408K LVLS FARMER 4G COLE FIRST DOWN 46D
LVLS 408H LVLS JENI 601V
LVLS POLLED JUSTICE 0601E
LVLS MISS STABILIZER 1408E

MAGS JESSICA WULFS GUARDIAN 5074G COLE FIRST DOWN 46D
WULFS EXAMPLE 5074E
WULF'S MANDARIN 1121A

	CE	BW	WW	YW	MA	CM	SC	DC	CW	RE	YG	MS	SMI
EPDs	8	2.8	48	92	30	10	0.7	20	22	0.25	0.00	0.05	46
ACC.	P	P+	P+	P	P	P	P	P	P	P	P	P	-

What more would you ask for in a replacement heifer than an LVLS Secret Weapon daughter with a 30 for milking ability. This heifer has the striking profile and the overall balance that we know you will appreciate on sale day.



PBRS Up Town Girl 48U

Lot 15

Lim-Flex (50/44.5) Heifer 3.06.08 PBRs 48U
LFF 1910135 Homozygous Polled Double Black

DHVO TREY 133R GPF BLAQUE RULON BLACK DIAMOND
AMY JO DHAN 20L QUAIL RUN RAMONA BP
BLACK CAT DHAN 152G
GPF AMBER JO

SUMMITCREST GAYBIRD 4P38 S/C FORTUNE 0L02 SAF EASY FORTUNE
SUMMITCREST GAYBIRD 2K42 SUMMITCREST HEIRESS 2J06
FAMOUS 7001
SUMMITCREST GAYBIRD 3D56

CE	BW	WW	YW	MA	CM	SC	DC	CW	RE	YG	MS	\$MI
EPDs 5	0.8	44	86	23	0	0.5	20	-	0.01	0.15	0.05	44
ACC. P	P+	P	P	P	P	-	-	P	P	P	P	-

Homozygous polled and one really nice made 50% Limflex heifer. She is sired by the two time national champion sire, Deuce and from an Angus cow from Summitcrest. This heifer has a low birth and high milk of 23.

PBRS Ultra Bright 68U

Lot 16

Lim-Flex (50/44.5) Heifer 4.10.08 PBRs 68U
LFF 1910136 Double Polled Double Black

DHVO DEUCE 132R GPF BLAQUE RULON BLACK DIAMOND
AMY JO DHAN 20L QUAIL RUN RAMONA BP
BLACK CAT DHAN 152G
GPF AMBER JO

SEDGWICKS ERICA 2843 DALEBANKS EXTENDER 6012 N BAR EMULATION EXT
PRINCESS 4007 OF DALEBANKS
O C C FLASHBACK 824F
SEDGWICKS ERICA 8430 SEDGWICKS ERICA 8433

CE	BW	WW	YW	MA	CM	SC	DC	CW	RE	YG	MS	\$MI
EPDs 5	-1.1	53	98	26	0	0.6	-	37	0.15	0.22	0.08	47
ACC. P	P+	P	P	P	P	P	-	P	P	P	P	-

Double polled, double black and solid standing daughter of Deuce. She is a 50% Limflex heifer that comes from the P Bar S aggressive Limflex herd.

PBRS Urgent Desire 138U

Lot 17

Lim-Flex (50/45.3) Heifer 3.14.08 PBRs 138U
LFF 1910137 Homozygous Polled Double Black

MAGS SASQUATCH EXLR NEW GENERATION 071M AUTO BLACK DAKOTA 129J
EXLR LUVLY 084F
MAGS FRUITFUL 487M EXLR LIMITED EDITION 765J
WULFS FRUITFUL 6052F

SEDGWICKS LUCY 2368 G A R PARAMOUNT GAR PRECISION 1680
G A R EXT 2114
SEDGWICKS LUCY 3688 SEDGWICKS DIAMOND14834924
SEDGWICKS LUCY 3686

CE	BW	WW	YW	MA	CM	SC	DC	CW	RE	YG	MS	\$MI
EPDs 9	1.1	40	83	26	3	-	-	11	0.01	0.11	0.14	46
ACC. P	P+	P	P	P	P	-	-	P	P	P	P	-

This will be your first opportunity in the breed to select a 50% Limflex heifer sired by MAGS Sasquatch. He was added to P Bar S as the \$118,000 highly syndicated homozygous polled sire. His first calves look great and this heifer from a top Angus cow will light your fire.

PBRS Universal Design 158

Lot 18

Lim-Flex (50/45.4) Heifer 2.14.08 PBRs 158U
LFF 1910138 Homozygous Polled Double Black

JCL LODESTAR 27L HUNTS HI-LITER 245G WADDLES COBALT 3106
TNUH MISS C245
LOGAN'S CHEERLEADER 280G COLE FIRST DOWN 46D
TTCC CONFIDENCE MAKER

SEDGWICKS ERICA 3843 ROYAL WORKHORSE 001 SEDGWICKS WORKMAN 3706
CEDARCREST ERICA 518
SEDGWICKS ERICA 8433 V D A R NORTHERN EXPOSURE
SEDGWICKS ERICA 554

CE	BW	WW	YW	MA	CM	SC	DC	CW	RE	YG	MS	\$MI
EPDs 13	-0.8	46	103	24	8	0.4	-	44	-0.12	0.41	0.14	46
ACC. P	P+	P+	P	P	P	P	-	P	P	P	P	-

Low birth of -0.8, yearling of 108, milk of 24 and marbling of .14 is this young 50% Limflex heifer sired by JCL Lodestar 27L. This young heifer has a solid set of numbers and is just as strong in her pedigree.

PBRS Uniform Design 318U

Lot 19

Lim-Flex (50/45.1) Heifer 4.02.08 PBRs 318U
LFF 1910139 Double Polled Double Black

KRVN PURSUIT OF GOLD 137P JCL LODESTAR 27L HUNTS HI-LITER 245G
LFL LACY 1007L LOGAN'S CHEERLEADER 280G
MINE POLLED DRYDOCK 004H
ALAW ELIZABETH 21E

SEDGWICKS ERICA 3216 ROYAL WORKHORSE 001 SEDGWICKS WORKMAN 3706
CEDARCREST ERICA 518
SEDGWICKS ERICA 2160 GDAR SVF TRAVELER 234D
SEDGWICKS ERICA 2165

CE	BW	WW	YW	MA	CM	SC	DC	CW	RE	YG	MS	\$MI
EPDs 8	0.5	54	99	28	5	0.3	-	32	0.06	0.18	0.08	48
ACC. P	P+	P	P	P	P	-	-	P	P	P	P	-

High growth, high milk, solid marbling and a 48 for MTI is what you get with this young heifer. She is a double polled, double black 50% Limflex heifer and a granddaughter of JCL Lodestar 27L.

PBARs
RANCH
The Little Ranch
with Big Genetics



**LOT 20 -
PBRs Totally 4 Sure 703T**



MAGS New Games 169N

**Spring
PUREBRED
Bred Heifers**

PBRs Totally 4 Sure 703T

Lot **20**

PB Limousin (100/91.3) Heifer 2.07.07 PBRs 703T
NPF 1881031 Double Polled Black

GPF BLAQUE RULON
CARROUSELS PEAK POWER
HC CHERISH

BLACK DIAMOND
QUAIL RUN RAMONA BP
HC POLLED MANHATTAN
HACO MISTY MORNING

MAGS LITTLE BROTHER
MAGS NEW GAMES 169N
MAGS GAMES WE PLAY 245L

EXLR DAKOTA 353G
DJ ESSENCE
DVFC COOKIE MONSTER 108H
MAGS GAMES WE PLAY

	CE	BW	WW	YW	MA	CM	SC	DC	CW	RE	YG	MS	SMI
EPDs	3	3.8	48	75	21	1	0.6	17	16	0.58	-0.15	-0.11	41
ACC.	P	34	28	18	11	P	14	P	P	P	P	P	-

6 EMBRYOS *Lot* **20A**

Selling 6 embryos by bull of buyers choice from dam of Lot 20,
MAGS New Games 169N.

Bred 6.09.08 to Responder; PE to MAGS Table Tennis from 6.27 - 7.17.08.

Named just as you would image is this young first calf heifer. She is one of if not the finest Limousin female ever created at P Bar S Ranch. This black and double polled daughter of Carrouseles Peak Power as you can tell by her picture and when you see her on sale day, is a great one! She is massive in her foot size, extremely big boned and stands out in a crowd of others! We are amazed at the extreme amount of rib shape, overall volume and the entire mass of this young female. To find one with this much rib shape, volume and then to still maintain her overall look is a feat in itself. This young female will make her make in a big fashion once the hammer falls on sale day. We congratulate the new buyer early on a job well done. No matter what the price of this female, she will create future greatness for years to come.

**LOT 21 -
PBRs Trudy 701T**



**LOT 22 -
BISK Top Model 722T**



PBRs Trudy 701T

Lot **21**

PB Limousin (100/85.9) Heifer 1.02.07 PBRs 701T
NPF 1881030 Double Polled Homozygous Black

CARROUSELS NASDAQ AUTO BLACK DAKOTA 129J EXLR DAKOTA 353G
CARROUSELS JAMAICA DFCL JET SET BPC 34Y
COLE FIRST DOWN 46D
CANE RIDGE CELEST 6169

COLE 57N ANDERS JAG GREENWOODPOLLED455RCKET
ANDERS GEMINI
COLE FIRST DOWN 46D
COLE 69Y

	CE	BW	WW	YW	MA	CM	SC	DC	CW	RE	YG	MS	SMI
EPDs	6	1.7	35	70	17	4	0.5	3	25	0.35	0.08	0.09	43
ACC.	P	33	28	19	13	P	16	P	P	P	P	P	-

BISK Top Model 722T

Lot **22**

Lim-Flex (75/67.3) Heifer 3.23.07 BISK 722T
LFF 1895807 Homozygous Polled Homozygous Black

AUTO DOLLAR GENERAL 122R LVLS SECRET WEAPON 4408K LVLS FARMER 4G
AUTO KYRIA 232K LVLS 408H
AUTO HACKETT 702H
WULFS HAPPINESS 8136H

SCC NETTIE 830N GPFF BLAQUE RULON BLACK DIAMOND
FOUNDATION COW QUAIL RUN RAMONA BP

	CE	BW	WW	YW	MA	CM	SC	DC	CW	RE	YG	MS	SMI
EPDs	8	-1.1	42	77	25	2	0.5	9	25	0.44	0.03	0.09	46
ACC.	13	32	27	13	09	10	08	P	P	P	P	P	-

PE to MAGS Table Tennis from 6.27 - 8.20.08.

This homozygous black and double polled female represents a strong lineage of cattle created at P Bar S Ranch. She is sired by the once national champion sire, Carrouseles Nasdaq. He is a breed leading sire and son of AUTO Black Dakota. Trudy is from the big time homo/homo donor, COLE 57N. She is a daughter of Anders Jag and was bred in the Coleman Limousin Ranch herd. This young heifer has the breed desired look and the overall package to make your hand rise up high on sale day and make a wise investment to add her to your program.

Bred 06.02.08 to MAGS Scotland; safe. PE to MAGS Table Tennis from 6.27 - 8.20.08.

Homozygous polled, homozygous black is this 75% Lim-Flex heifer. She is extreme in her depth of body and has a lot of maternal characteristics to her. We have not doubt she is going to make a great brood cow and could easily enter into anyones donor program. She is one you will really like on sale day.

**LOT 23 -
PBRs Tully 704T**



**LOT 24 -
PBRs Sensational**



PBRs Tully 704T

Lot **23**

PB Limousin (100/90.0) Heifer 2.10.07 PBRs 704T
NPF 1881048 Double Polled Homozygous Black

DHVO ACE 128R GPFF BLAQUE RULON BLACK DIAMOND
AMY JO DHAN 20L BLACK CAT DHAN 152G
GPFF AMBER JO

MAGS NADINE 110N DJ GENTLEMAN IN BLACK COLE FIRST DOWN 46D
MAGS LADY ACE DJ ESSENCE
EXLR INTRIGUE 361G
CHAZ MISS GRETA 7003G

	CE	BW	WW	YW	MA	CM	SC	DC	CW	RE	YG	MS	SMI
EPDs	4	2.5	42	78	21	2	0.6	15	24	0.60	-0.05	0.02	44
ACC.	P	29	24	13	11	P	10	P	P	P	P	P	-

Bred 5.12.08 to Top Criteria; safe. PE to MAGS Table Tennis from 6.27 - 8.20.08.

Homozygous black and double polled is this daughter of DHVO Ace 128R. Her overall make up and design is very powerful. This young heifer has that cool look and profile that we know will make you stop in your tracks on sale morning. She is clean and smooth through her front end. She is long bodied and very angular made. It is this kind of female with that "look" and then when you add that dimension and power to go with her, you finally realize you have something special. Her dam is a top cow at P Bar S Ranch, she is a daughter of DJ Gentleman In Black from the famed Magness donor, MAGS Lady Ace.

PBRs Sensational 711T

Lot **24**

PB Limousin (100/88.0) Heifer 2.16.07 PBRs 711T
NPF 1880265 Polled Double Black

AUTO DOLLAR GENERAL 122R LVLS SECRET WEAPON 4408K LVLS FARMER 4G
AUTO KYRIA 232K AUTO HACKETT 702H
LVLS 408H
WULFS HAPPINESS 8136H

MAGS JESSICA WULFS GUARDIAN 5074G WULFS RAMBLER 8400X
MAGS GO IN STYLE WULFS EXAMPLE 5074E
COLE FIRST DOWN 46D
WULF'S MANDARIN 1121A

	CE	BW	WW	YW	MA	CM	SC	DC	CW	RE	YG	MS	SMI
EPDs	6	1.8	57	100	26	5	0.5	19	26	0.39	0.05	0.09	50
ACC.	17	33	27	16	13	16	10	P	P	P	P	P	-

Bred 5.02.08 to Direct Hit; safe. PE to MAGS Table Tennis from 6.27 - 8.20.08.

Sensational is a black and polled replacement heifer from the "keeper" pen at P Bar S Ranch. She is sired by the highly syndicated homo/homo sire, AUTO Dollar General 122R and from the MAGS Going In Style donor. This young heifer has the pedigree of promise and a balanced set of epd's to go with.



**LOT 25 -
PBRs Trixie 714T**



**LOT 26 -
PBRs Time Is Right 718T**

PBRs Trixie 714T

Lot 25

PB Limousin (100/90.5) Heifer 2.24.07 Double Polled PBRs 714T Double Black

LVLS SECRET WEAPON 4408K LVLS FARMER 4G
 AUTO DOLLAR GENERAL 122R LVLS 408H
 AUTO KYRIA 232K AUTO HACKETT 702H
 WULFS HAPPINESS 8136H

KRMC OUTCROSS 192G LVLS POLLED BLACK JACK
 MAGS TEMPTRESS 536L HOLJO 103
 CANE RIDGE TEMPTRESS 6611 WULFS RAMBLER 8400X
 CANE RIDGE TEMPTRESS 404W

CE	BW	WW	YW	MA	CM	SC	DC	CW	RE	YG	MS	SMI
EPDs 6	0.1	43	82	25	4	0.3	5	30	0.32	0.11	0.14	47
ACC. 15	32	27	16	11	13	09	P	P	P	P	P	-

Bred 6.04.08 to MAGS Table Tennis; safe. PE to MAGS Table Tennis from 6.27 - 8.20.08.

There is loads of maternal and lots of marbling bred in this female. She is sired by the syndicated homo/homo sire AUTO Dollar General 122R and from a daughter of KRMC Outcross. This young heifer has a balanced set of numbers with a 0.1 for birth, 25 for milking ability and .14 for marbling.

PBRs Time Is Right 718T

Lot 26

PB Limousin (100/86.9) Heifer 3.13.07 Double Polled PBRs 718T Double Black

GPFF BLAQUE RULON BLACK DIAMOND
 DHVO DEUCE 132R QUAIL RUN RAMONA BP
 AMY JO DHAN 20L BLACK CAT DHAN 152G
 GPFF AMBER JO

DJ GENTLEMAN IN BLACK COLE FIRST DOWN 46D
 EXLR ECLIPSE 7231N DJ ESSENCE
 EXLR 568G WULF'S COUNT DOWN 9251C
 EXLR 507E

CE	BW	WW	YW	MA	CM	SC	DC	CW	RE	YG	MS	SMI
EPDs 5	2.8	53	90	22	3	0.9	15	34	0.51	-0.03	0.01	46
ACC. 13	33	27	12	11	12	10	P	P	P	P	P	-

Bred 5.31.08 to Top Criteria; safe. PE to MAGS Table Tennis from 6.27 - 8.20.08.

718T is a black and double polled daughter of the two time national champion sire, DHVO Deuce. We are finding with the first Deuce calves, they are very eye appealing with plenty of power and muscle. This heifer is an over-achiever in that department. She is from a daughter of DJ Gentleman In Black and one that has been a strong and consistent producer at P Bar S Ranch.



**LOT 27 -
PBRs Thunder Struck 732T**



**LOT 28 -
PBRs Teron 730T**

PBRs Thunder Struck 732T *Lot 27*

PB Limousin (100/88.4) Heifer 4.09.07 PBRs 732T
NPF 1897471 Homozygous Polled Homozygous Black

LVLS SECRET WEAPON 4408K LVLS FARMER 4G
AUTO DOLLAR GENERAL 122R LVLS 408H
 AUTO KYRIA 232K AUTO HACKETT 702H
 WULFS HAPPINESS 8136H

ANDERS JAG
MAGS NAPELLA GREENWOODPOLLED455ROCKET
 AUTO CITY NIGHTS 214H ANDERS GEMINI
 COLE FIRST DOWN 46D
 MISS WOLFETTE 9049X

	CE	BW	WW	YW	MA	CM	SC	DC	CW	RE	YG	MS	\$MI
EPDs	6	3.7	57	100	23	5	0.5	6	32	0.28	0.13	0.18	53
ACC.	P	33	28	16	11	P	10	P	P	P	P	P	-

PBRs Teron 730T *Lot 28*

PB Limousin (100/88.4) Heifer 4.07.07 PBRs 730T
NPF 1897469 Double Polled Homozygous Black

LVLS SECRET WEAPON 4408K LVLS FARMER 4G
AUTO DOLLAR GENERAL 122R LVLS 408H
 AUTO KYRIA 232K AUTO HACKETT 702H
 WULFS HAPPINESS 8136H

ANDERS JAG
MAGS NAPELLA GREENWOODPOLLED455ROCKET
 AUTO CITY NIGHTS 214H ANDERS GEMINI
 COLE FIRST DOWN 46D
 MISS WOLFETTE 9049X

	CE	BW	WW	YW	MA	CM	SC	DC	CW	RE	YG	MS	\$MI
EPDs	6	2.9	54	96	23	5	0.5	6	32	0.28	0.13	0.18	52
ACC.	P	33	28	16	11	P	10	P	P	P	P	P	-

LOT 27 - Bred 6.24.08 to Top Criteria. PE to PBRs Safe Bet 6123 from 7.17 - 8.20.08.

LOT 28 - Bred 7.15.08 to Top Criteria; safe. PE to PBRs Safe Bet 6123 from 7.17 - 8.20.08.

If you are looking to add epd's and inject some positive performance traits into your herd then here are two full sisters that can do just that. These young homozygous polled and homozygous black daughters of AUTO Dollar General 122R are from daughters of Anders Jag. They not only have the promising look but the numbers to back up all you would ever want. They have 100 for yearling weight, 23 for milking ability, .18 for marbling and 52 for MTI.





LOT 29 - PBRs Tabatha 739T

PBRs Tabatha 739T

Lot 29

PB Limousin (100/88.4) Heifer 4.22.07 PBRs 739T
NPF 1895842 Double Polled Black

BLACK DIAMOND
GPFf BLAQUE RULON
QUAIL RUN RAMONA BP

CANE RIDGE BLACK DRAK
WULFS DIADEM 4260D
LKCC TOMAHAWKS TOUCHDOWN
AMBL FAVORITE GIRL 36W

EXLR DAKOTA 353G
MAGS MANDARIN 117L
MAGS GO IN STYLE

WULF'S COUNT DOWN 9251C
CANE RIDGE DAPHNE 011D
COLE FIRST DOWN 46D
WULF'S MANDARIN 1121A

CE	BW	WW	YW	MA	CM	SC	DC	CW	RE	YG	MS	SMI
EPDs 3	3.1	47	85	19	2	0.8	12	9	0.51	-0.10	-0.04	43
ACC. 22	35	30	22	21	21	19	P	P	P	P	P	-

Bred 7.03.08 to Top Criteria; safe. PE to MAGS Table Tennis from 6.27 - 8.20.08.

Great results happen in our breed of cattle when you cross two of the finest sires ever to hit our breed. This heifer is sired by the breed leading GPFf Blaque Rulon and is from a daughter of EXLR Dakota. If you like your cattle to be striking or flashy in their profile, then take a look her at a great one. She is slick clean through her front end, extremely heavy muscled and very strong in her stance. This female will be easy to breed and to mate for future show cattle or make them more maternal. Either way it will be a huge success for the new owner.

PBRs So Fine 691S

Lot 31

PB Limousin (100/90.6) Heifer 11.01.06 PBRs 691S
NPF 1871563 Double Polled Black

BLACK DIAMOND
GPFf BLAQUE RULON
QUAIL RUN RAMONA BP
GPFf EXTRA SWEET ELITE

CANE RIDGE BLACK DRAK
WULFS DIADEM 4260D
LKCC TOMAHAWKS TOUCHDOWN
AMBL FAVORITE GIRL 36W

EXLR DAKOTA 353G
PBRs MEGAN'S MAIDEN
JCL MEGAN

WULF'S COUNT DOWN 9251C
CANE RIDGE DAPHNE 011D
SY BONANZA
JCL MOLLY

CE	BW	WW	YW	MA	CM	SC	DC	CW	RE	YG	MS	SMI
EPDs 1	3.8	37	67	25	-2	0.6	4	-5	0.26	-0.08	-0.10	38
ACC. P	P	P	P	P	P	P	P	P	P	P	P	-

Bred 5.13 to MAGS Table Tennis; safe.

Black and polled is this daughter of LESF Asphalt from a daughter of EXLR Dakota. She has a 25 for milking ability and stands proud as one of the really nice replacement heifers in the sale.

PBRs Tabu 712T

Lot 30

PB Limousin (100/90.0) Heifer 2.17.07 PBRs 712T
NPF 1880266 Double Polled Double Black

BLACK DIAMOND
QUAIL RUN RAMONA BP
LKCC TOMAHAWKS TOUCHDOWN
HC EXTRAORDINARY HCR 61X

GPFf BLAQUE RULON
LESF ASPHALT 9N
GPFf EXTRA SWEET ELITE

MAGS LITTLE BROTHER
PBRs DREAM GIRL 0319
ALCM DREAM GIRL 176L

EXLR DAKOTA 353G
DJ ESSENCE
EXLR POLLED BENCHMARK709G
WULFS DREAM GIRL 4109D

CE	BW	WW	YW	MA	CM	SC	DC	CW	RE	YG	MS	SMI
EPDs 2	2.7	30	61	20	-4	0.3	9	-10	0.19	-0.13	-0.08	37
ACC. 19	32	27	19	14	18	18	P	P	P	P	P	-

PE to MAGS Table Tennis from 6.27 - 7.17.08; safe.

This black and polled daughter of LESF Asphalt is a young heifer that has the extra muscle, thickness and striking profile to her. Her dam is a daughter of MAGS Little Brother that goes back to ALCM Dream Girl 0319.

BOHI Star Light 6204S

Lot 32

Lim-Flex (75/64.8) Heifer 9.15.06 BOHI 6204
LFF 1846614 Double Polled Homozygous Black

AUTO BLACK DAKOTA 129J
CARROUSELS NASDAQ
CARROUSELS JAMAICA

EXLR DAKOTA 353G
DFLC JET SET BPC 34Y
COLE FIRST DOWN 46D
CANE RIDGE CELEST 6169

CHTT 5434D
BOHI LIM FLEX 21P
MAGS4329K

YKCC POLLED NORTHERN 204B
CHTT 34U
RR SCOTCHCAP 9440

CE	BW	WW	YW	MA	CM	SC	DC	CW	RE	YG	MS	SMI
EPDs 6	-0.1	34	71	21	1	0.7	6	16	0.04	0.15	0.04	40
ACC. 18	32	22	17	11	18	P	P	P	P	P	P	-

Bred 5.13 to MAGS Table Time; safe.

This homozygous black 75% heifer is sired by the national champion Carrousel's Nasdaq. She is a moderate framed heifer that has the look, power and the prominent lineage that you will like. She sells bred to MAGS Table Tennis, a black and double polled son of LVLS Secret Weapon.

Spring
LIMFLEX
Bred Heifers



**LOT 33 -
PBRs Trouble 127T**



**LOT 34 -
PBRs Today 157T**

LOT 33 - Bred 6.02.08 to MAGS Scotland; safe. PE to MAGS Table Tennis from 6.27 - 8.20.08.

LOT 34 - Bred 6.24.08 to Smackdown; safe. PE to MAGS Table Tennis from 6.27 - 8.20.08.

P Bar S Ranch is one of our breed's largest suppliers of registered Limousin and Limflex seedstock. They have developed one of the strongest herds of Angus females to A.I. to their very best Limousin bulls. The results over the last few years have been astounding. The following group of Limflex heifers are from that strong base of Registered Angus females. The Angus females that represent the P Bar S Ranching operation were select for the moderation of frame, length of body and overall balance. They were hand picked from a select few leading Angus firms for their above breed average epd's and predictable pedigree. The group of Limflex heifers listed below are all sired by the yearling weight and marbling trait leading purebred Limousin sire, JCL Lodestar 27L. There is something about Lodestar bred back on Angus females, the results are truly amazing. When in lactation the Lodestar daughters form very well shaped and uniform udders and for the most part wean their calves well above the average of the contemporary groups they are in. We are excited about showing you the results that you get when you breed the best in purebred with the best in Angus.

PBRs Trouble 127T

Lot **33**

Lim-Flex (50/45.4) Heifer 3.20.07 PBRs 127T
LFF 1886817 Homozygous Polled Double Black

HUNTS HI-LITER 245G	WADDLES COBALT 3106
JCL LODESTAR 27L	TNUH MISS C245
LOGAN'S CHEERLEADER 280G	COLE FIRST DOWN 46D
	TTCC CONFIDENCE MAKER
BON VIEW NEW DESIGN 1407	B/R NEW DESIGN 036
SEDGWICKS PRIDE 3465	BON VIEW PRIDE 664
SEDGWICKS PRIDE 4651	SEDGWICKS TRAVELER 7
	SEDGWICKS PRIDE 92

	CE	BW	WW	YW	MA	CM	SC	DC	CW	RE	YG	MS	SMI
EPDs 13	-1.3	48	99	25	8	0.4	12	31	-0.16	0.27	0.26	52	
ACC. 20	34	29	20	20	19	14	P	23	22	22	22	-	

PBRs Today 157T

Lot **34**

Lim-Flex (50/45.4) Heifer 3.07.07 PBRs 157T
LFF 1886820 Homozygous Polled Double Black

HUNTS HI-LITER 245G	WADDLES COBALT 3106
JCL LODESTAR 27L	TNUH MISS C245
LOGAN'S CHEERLEADER 280G	COLE FIRST DOWN 46D
	TTCC CONFIDENCE MAKER
S/C FORTUNE 0L02	SAF EASY FORTUNE
SUMMITCREST GAYBIRD 4P38	SUMMITCREST HEIRESS 2J06
SUMMITCREST GAYBIRD 2K42	FAMOUS 7001
	SUMMITCREST GAYBIRD 3D56

	CE	BW	WW	YW	MA	CM	SC	DC	CW	RE	YG	MS	SMI
EPDs 12	-1.2	44	96	20	8	0.3	-	30	-0.22	0.31	0.18	48	
ACC. 18	35	29	20	18	18	14	-	22	21	21	21	-	



LOT 35 - PBRs Temptress 17T

PBRs Temptress 17T

Lot 35

Lim-Flex (50/45.4) Heifer 3.04.07 PBRs 17T
LFF 1886806 Homozygous Polled Double Black

HUNTS HI-LITER 245G WADDLES COBALT 3106
JCL LODESTAR 27L TNUH MISS C245
 LOGAN'S CHEERLEADER 280G COLE FIRST DOWN 46D
 TTCC CONFIDENCE MAKER

PAA PRECISIONDESIGN 1404 TWIN VALLEY PRECISIONE161
SUMMITCREST PRIMROSE 351P PAA 323 BLACKBIRD 8407
 SUMMITCREST PRIMROSE 159K FAMOUS 7001
 SUMMITCREST PRIMROSE 181B

	CE	BW	WW	YW	MA	CM	SC	DC	CW	RE	YG	MS	SMI
EPDs	14	-1.7	40	92	19	8	0.2	-	21	-0.26	0.26	0.22	48
ACC.	18	35	30	21	19	18	14	-	22	21	21	21	-

Bred 5.24.08 to MAGS Scotland; safe. PE to MAGS Table Tennis from 6.27 - 8.20.08.

PBRs Sugar Babe 47T

Lot 37

Lim-Flex (50/45.4) Heifer 2.25.07 PBRs 47T
LFF 1886809 Homozygous Polled Double Black

HUNTS HI-LITER 245G WADDLES COBALT 3106
JCL LODESTAR 27L TNUH MISS C245
 LOGAN'S CHEERLEADER 280G COLE FIRST DOWN 46D
 TTCC CONFIDENCE MAKER

SUMMITCRESTHIGHPRIME 0H29 GARDENS PRIME TIME
BT CHLOE 70R SUMMITCREST MISSIE 2F55
 BT CHLOE 420N SITZ ALLIANCE 8199
 BT CHLOE 62K

	CE	BW	WW	YW	MA	CM	SC	DC	CW	RE	YG	MS	SMI
EPDs	13	-1.6	48	101	23	8	0.2	-	26	-0.20	0.26	0.16	48
ACC.	19	33	28	20	19	19	14	-	22	22	22	21	-

Bred 5.21.08 to MAGS Scotland; safe. PE to MAGS Table Tennis from 6.27 - 8.20.08.

PBRs Tracy 27T

Lot 36

Lim-Flex (50/45.4) Heifer 3.15.07 PBRs 27T
LFF 1886807 Homozygous Polled Double Black

HUNTS HI-LITER 245G WADDLES COBALT 3106
JCL LODESTAR 27L TNUH MISS C245
 LOGAN'S CHEERLEADER 280G COLE FIRST DOWN 46D
 TTCC CONFIDENCE MAKER

HOMEACRES PLATINUM 723 G D A R OSCAR 711
HOMEACRES MAY D52 HOMEACRES HANA 103
 HOMEACRES R D J MAY 604 V D A R LUCYS BOY
 PHARAOH 3005

	CE	BW	WW	YW	MA	CM	SC	DC	CW	RE	YG	MS	SMI
EPDs	12	-0.5	49	98	21	8	0.3	-	36	-0.17	0.32	0.22	50
ACC.	18	34	29	20	19	18	14	-	22	21	21	21	-

Bred 5.25.08 to MAGS Scotland; safe. PE to MAGS Table Tennis from 6.27 - 8.20.08.

PBRs Tainted Love 257T

Lot 38

Lim-Flex (50/45.4) Heifer 4.10.07 PBRs 257T
LFF 1895810 Homozygous Polled Double Black

HUNTS HI-LITER 245G WADDLES COBALT 3106
JCL LODESTAR 27L TNUH MISS C245
 LOGAN'S CHEERLEADER 280G COLE FIRST DOWN 46D
 TTCC CONFIDENCE MAKER

MC CUMBER 204 MR WIX 920 MR WIX OF MC CUMBER 204
SEDGWICKS PRIDE 7984 MISS WIX 298 OF MC CUMBER
 SEDGWICKS PRIDE 7987 O C C BACKSTOP 888B
 SEDGWICKS PRIDE 8904

	CE	BW	WW	YW	MA	CM	SC	DC	CW	RE	YG	MS	SMI
EPDs	-	-0.4	47	101	22	-	0.3	-	29	-0.18	0.27	0.18	49
ACC.	-	24	28	20	18	-	14	-	22	21	21	21	-

Bred 7.12.08 to MAGS Scotland; safe. PE to MAGS Table Tennis from 7.17 - 8.20.08.



**LOT 39 -
PBRs Time 4 Me 277T**



**LOT 40 -
PBRs Touch 167T**

PBRs Time 4 Me 277T *Lot 39*

Lim-Flex (50/44.5) Heifer 4.11.07 PBRs 277T
LFF 1895812 Homozygous Polled Double Black

DHVO ACE 128R GPF BLAQUE RULON BLACK DIAMOND
AMY JO DHAN 20L QUAIL RUN RAMONA BP
BT BLACKCAP LASS 550M TOP SECRET 9757 E A R TRAVELER POWER 137 EAR
BT BLACKCAP LASS 152D RM BLACK MAGIC 7574 E A R
JOLLY R JIM 0044
BT BLACKCAP LASS 159B

	CE	BW	WW	YW	MA	CM	SC	DC	CW	RE	YG	MS	SMI
EPDs	5	1.9	58	97	21	0	0.4	-	34	0.02	0.32	0.15	50
ACC. P	22	26	13	13	P	05	-	18	17	17	17	-	-

Bred 7.01.08 to MAGS Scotland; safe. PE to MAGS Table Tennis from 6.27 - 8.20.08.

One of the favorites of the many cattlemen that have stopped by the ranch is this young homozygous polled daughter of DHVO Ace 128R. This young heifer is so beautiful it is scary! She is long necked, angular through her front end, level from her hooks to her pens and very deep in her flank. This heifer has a great future ahead of her in production. She has a breed leading set of epd's with a 97 for yearling weight, 0.15 for marbling and 50 for MTI. This heifer is remarkable and is one that you can build a program.

PBRs Touch 167T *Lot 40*

Lim-Flex (50/46.4) Heifer 3.18.07 PBRs 167T
LFF 1886821 Homozygous Polled Double Black

PBRs BIG LODE 507R JCL LODESTAR 27L HUNTS HI-LITER 245G
EXLR JULIE 617L LOGAN'S CHEERLEADER 280G
EXLR POLLED BENCHMARK709G
EXLR 620G
MC CUMBER 124 TRAVELER212 TRAVELER 124 G D A R
SEDGWICKS ERICA 3211 MISS WIX 365 OF MCCUMBER
SEDGWICKS ERICA 2115 RR 9440 SCOTCH CAP 1483
SEDGWICKS ERICA 5552

	CE	BW	WW	YW	MA	CM	SC	DC	CW	RE	YG	MS	SMI
EPDs	10	0.2	49	94	26	4	0.3	-	38	0.06	0.20	0.11	47
ACC. 11	30	24	11	12	10	05	-	17	16	16	15	-	-

Bred 6.24.08 to MAGS Twain; safe. PE to MAGS Table Tennis from 6.27 - 8.20.08.

This Big Lode daughter has a great set of epd's with a 0.2 for birth, 94 for yearling, 26 for milking ability .11 for marbling. She is homozygous polled, black and appears to be very maternal and has that look of promise to her.



FALL Calving Heifers



**LOT 41 -
PBRs Secret 650S**



**LOT 42 -
PBRs Show & Tell 649S**

PBRs Secret 650S

Lot **41**

PB Limousin (100/91.0) Heifer 8.15.06 PBRs 650S
NPF 1868083 Double Polled Double Black

JCL LODESTAR 27L HUNTS HI-LITER 245G WADDLES COBALT 3106
LOGAN'S CHEERLEADER 280G TNUH MISS C245
COLE FIRST DOWN 46D
TTCC CONFIDENCE MAKER

PBRs BENJI 0378 EXLR GAUCHO 362K WULFS GUARDIAN 5074G
PBRs BENJI 0131 EXLR ALLIANCE 337G
MAGS JUMANJI
MAGS JUST FOR ME

CE	BW	WW	YW	MA	CM	SC	DC	CW	RE	YG	MS	SMI
EPDs 12	0.7	51	101	23	9	0.6	19	35	0.20	0.14	0.11	48
ACC. 20	34	28	18	19	19	17	P	P	P	P	P	-

Bred to PBRs Safe Bet 6123; due 10.18.08.

Secret is one of the really well made and structurally correct purebred Limousin heifers. She is sired by the multiple trait leading sire JCL Lodestar and from a daughter of EXLR Gaucho. This black and double polled heifer has a great set of epd's with a 0.7 for birth, 101 for yearling weight, 23 for milk and .11 for marbling.

PBRs Show & Tell 649S

Lot **42**

PB Limousin (100/90.0) Heifer 8.14.06 PBRs 649S
NPF 1868082 Double Polled Double Black

JCL LODESTAR 27L HUNTS HI-LITER 245G WADDLES COBALT 3106
LOGAN'S CHEERLEADER 280G TNUH MISS C245
COLE FIRST DOWN 46D
TTCC CONFIDENCE MAKER

PBRs VERDICT 479P PBRs BLACK DAKOTA 001 EXLR DAKOTA 353G
LYLL BLACK VERDICT 828G TRAK GLORY
JCL BLACK OUT
D&M MISS DEW DROP 488C

CE	BW	WW	YW	MA	CM	SC	DC	CW	RE	YG	MS	SMI
EPDs 11	0.6	47	94	20	8	0.6	-	36	0.25	0.11	0.07	46
ACC. 20	33	28	18	18	19	16	-	P	P	P	P	-

We love the fact that this heifer is a result of the blending of JCL Lodestar with AUTO Black Dakota. These two leading sires have done a whole lot for our entire breed and when matched up in a progressive pedigree creates very positive results. She has a 0.6 for birth, 94 for yearling weight and still maintains positive carcass epd's across the board.

LOT 42A - Heifer, calved 9.21.08, double polled, double black, PBRs 899U. Sired by Wulf's Nasa.



**LOT 43 -
PBR Sugar 659S**

PBR Sugar 659S *Lot 43*

PB Limousin (100/90.2) Heifer NPF 1868088	9.06.06 Polled	PBR Sugar 659S Double Black
WULFS NASA 1212N	WULFS FANFARE 4055F MISS WULFETTE 1212L	THAWKS BLACK FRONTIER WULFS DELTA DAWN 4055D WULF'S EXTRA BONUS 0043 E MISS WULFETTE 9160J
PBR Sugar 456P	JCL LODESTAR 27L PBR Sugar JOSIE	HUNTS HI-LITER 245G LOGAN'S CHEERLEADER 280G EXLR DAKOTA 353G MAGS FOLLOW YOUR HEART

	CE	BW	WW	YW	MA	CM	SC	DC	CW	RE	YG	MS	SMI
EPDs	13	0.0	37	79	26	10	0.8	20	21	0.13	0.06	0.08	44
ACC.	20	34	29	20	14	19	17	P	P	P	P	P	-

Bred to Basin Franchise; due 10.07.08.

This daughter of the high valued herd sire Wulf's Nasa is really well made and is a true representative of what the P Bar S program is all about. She is from a daughter of JCL Lodestar and touts a 0 for birth, 26 for milk and .09 for marbling. She is strong down her topline and very structurally correct in her design.

PBR Shonda 696S *Lot 44*

PB Limousin (100/87.9) Heifer
NPF 1877684

11.11.06
Homozygous Polled

PBR Sugar 696S
Homozygous Black

GPFF BLAQUE RULON	BLACK DIAMOND QUAIL RUN RAMONA BP	CANE RIDGE BLACK DRAK WULFS DIADEM 4260D LKCC TOMAHAWKS TOUCHDOWN AMBL FAVORITE GIRL 36W
COLE 57N	ANDERS JAG COLE 34G	GREENWOODPOLLED455ROCKET ANDERS GEMINI COLE FIRST DOWN 46D COLE 69Y

	CE	BW	WW	YW	MA	CM	SC	DC	CW	RE	YG	MS	SMI
EPDs	5	2.7	52	90	13	1	0.6	6	22	0.61	-0.04	-0.03	45
ACC.	P	31	27	20	18	P	P	P	P	P	P	P	-

Bred to Sasquatch due 11.03.08.

Homozygous polled and homozygous black is this daughter of GPFF Blaque Rulon. He is one of the breed's widely accepted herd sires and is known for added the extra pounds and thickness to his offspring. This heifer is a proud daughter of Rulon from the P Bar S donor, COLE 57N. She is a homo/homo daughter of Anders Jag from a daughter of COLE 34G. This young heifer has the strong pedigree to go with her amazing profile.

PBR Sassy Girl 673S *Lot 45*

PB Limousin (100/90.7) Heifer
NPF 1868095

9.25.06
Double Polled

PBR Sugar 673S
Black

JCL LODESTAR 27L	HUNTS HI-LITER 245G LOGAN'S CHEERLEADER 280G	WADDLES COBALT 3106 TNUH MISS C245 COLE FIRST DOWN 46D TTCC CONFIDENCE MAKER
MAGS NIBBLER 188N	MAGS LITTLE BROTHER MAGS 33X 170L	EXLR DAKOTA 353G DJ ESSENCE DVFC COOKIE MONSTER 108H WLCC 33X

	CE	BW	WW	YW	MA	CM	SC	DC	CW	RE	YG	MS	SMI
EPDs	11	1.1	50	95	20	9	0.4	19	40	0.25	0.10	0.12	49
ACC.	21	34	24	21	19	21	P	P	P	P	P	P	-

This black and double polled daughter of JCL Lodestar is loaded up big time with epd's. She offers a 1.1 for birth-weight, 95 for yearling weight, 20 for milk, .25 for ribeye, .12 for marbling and 49 for MTI. It's numbers like these that will for sure make a difference in most Limousin and Limflex programs.

LOT 45A - Bull, calved 8.24.08, double polled, double black, PBR Sugar 873U. Sired by Wulf's Nasa.





**LOT 46 -
PBRs Shania 679S**



**LOT 47 -
PBRs Special
Design 6127S**

PBRs Shania 679S *Lot 46*

PB Limousin (100/90.4) Heifer 10.02.06 PBRs 649S
NPF 1877109 Double Polled Double Black

GPFF BLAQUE RULON
CARROUSELS PURE POWER
TUBB FIRST CLASS 666F

BLACK DIAMOND
QUAIL RUN RAMONA BP
WULFS RAMBLER 8400X
TUBB MISS P UPDATE 089Y

MDRC TUBB LUCKY STRIKE
PBRs ELECTRIC DREAMS 0383
MAGS LEXI

TUBB GRINDER 749D
EXLR 120J
KRMC OUTCROSS 192G
MAGS ELECTRIC DREAMS

	CE	BW	WW	YW	MA	CM	SC	DC	CW	RE	YG	MS	SMI
EPDs	5	3.8	49	84	19	5	0.6	1	28	0.46	-0.02	-0.08	42
ACC.	18	34	29	18	12	17	16	P	P	P	P	P	-

PBRs Special Design 6127S *Lot 47*

PB Limousin (100/91.3) Heifer 11.10.06 PBRs 6127S
NPF 1879416 Double Polled Black

JCL LODESTAR 27L
KRVN PURSUIT OF GOLD 137P
LFL LACY 1007L

HUNTS HI-LITER 245G
LOGAN'S CHEERLEADER 280G
MINE POLLED DRYDOCK 004H
ALAW ELIZABETH 21E

WULFS GAGE 5158G
MAGS LEILA
MAGS CAFFEINE FREE

WULFS ENDURANCE 3097E
WULFS EMBER 5158E
PLLP POLLED WEBSTER 30X
MK UPSY IN COMMAND

	CE	BW	WW	YW	MA	CM	SC	DC	CW	RE	YG	MS	SMI
EPDs	6	3.2	50	96	24	5	0.3	-	31	0.41	0.01	-0.05	43
ACC.	P	P	P	P	P	P	P	-	P	P	P	P	-

Bred to Sasquatch due 10.19.08.

This is one of the favorite bred heifers at P Bar S. We love her moderation of frame, extra depth of body and her unique profile. For as deep bodied and maternal as she is, she still maintains a very feminine and striking profile. We are excited to show you this maternal female.

If you want your Limousin females to have that striking profile and bedazzling look then we have one you are really going to like in PBRs Shania 679S. She is a black and double polled daughter of Carrouseles Pure Power from a daughter of TUBB Lucky Strike. This young replacement heifer is very feminine through her front end and very prominent in her profile. She always stands out in a group and is one of the favorites of many that have viewed the sale offering.

LOT 46A - Bull, calved 9.02.08, double polled, double black, PBRs 877U. Sired by Wulf's Nasa.



**LOT 48 -
PBRs Special Gal 680S**

PBRs Special Gal 680S

Lot 48

PB Limousin (100/91.0) Heifer 10.03.06 PBRs 680S
NPF 1877110 Double Polled Double Black

EXLR JUDO 459J WULFS GUARDIAN 5074G
EXLR NATIVE 7133N CM POLLED KATIE
TRAK EXLR ANNIE JCL BLACK OUT
YKCC NATALIE 223B

PBRs BLACK DAKOTA 001 EXLR DAKOTA 353G
PBRs DAKOTA 0241 TRAK GLORY
MAGS JUNGLE BOOK CHAZ FIRST CHOICE 6004F
MAGS EASTER RIBBONS

	CE	BW	WW	YW	MA	CM	SC	DC	CW	RE	YG	MS	SMI
EPDs	1	4.8	53	89	21	2	0.3	-	33	0.49	-0.01	-0.11	42
ACC.	16	33	26	14	09	15	08	-	P	P	P	P	-

Gal is sired by the once All American Futurity champion bull and leading homo/homo sire for Deer Valley Farm and Express Ranches. This Native daughter is black and double polled and very complete in her pattern. She is docile, goes back to a daughter of PBRs Black Dakota 001 back to MAGS Jungle Book.

LOT 48A - Bull, calved 8.24.08, double polled, double black, PBRs 874U. Sired by Wulf's Nasa.

PBRs Shady 684S

Lot 49

PB Limousin (100/90.1) Heifer 10.09.06 PBRs 684S
NPF 1877112 Double Polled Double Black

EXLR JUDO 459J WULFS GUARDIAN 5074G
EXLR NATIVE 7133N CM POLLED KATIE
TRAK EXLR ANNIE JCL BLACK OUT
YKCC NATALIE 223B

PBRs BLACK DAKOTA 001 EXLR DAKOTA 353G
PBRs JESSICA 0243 TRAK GLORY
MAGS JESSICA WULFS GUARDIAN 5074G
MAGS GO IN STYLE

	CE	BW	WW	YW	MA	CM	SC	DC	CW	RE	YG	MS	SMI
EPDs	6	1.5	42	75	16	2	0.4	-	29	0.56	0.01	-0.14	37
ACC.	17	33	27	14	11	16	09	-	P	P	P	P	-

Bred to PBRs 644S; due 11.25.08.

Shandy is a strong topped and very well balanced daughter of EXLR Native. We have found with the select few EXLR Native daughters, they are very striking in their profile and have that "cool" Limousin look to them and this heifer is no exception.

PBRs September Morn 683S

Lot 50

PB Limousin (100/90.6) Heifer 10.17.06 PBRs 683S
NPF 1877683 Double Polled Black

GPFF BLAQUE RULON BLACK DIAMOND
LESF ASPHALT 9N QUAIL RUN RAMONA BP
GPFF EXTRA SWEET ELITE LKCC TOMAHAWKS TOUCHDOWN
HC EXTRAORDINARY HCR 61X

EXLR DAKOTA 353G WULF'S COUNT DOWN 9251C
PBRs MEGAN'S MAIDEN CANE RIDGE DAPHNE 011D
JCL MEGAN SY BONANZA
JCL MOLLY

	CE	BW	WW	YW	MA	CM	SC	DC	CW	RE	YG	MS	SMI
EPDs	1	3.3	29	58	25	-2	0.6	4	-5	0.26	-0.18	-0.10	36
ACC.	P	30	27	20	16	P	P	P	P	P	P	P	-

Bred to Wulf's Nasa 6123; due 10.09.08.

We like the results we got with this beautiful purebred Limousin heifer when we crossed LESF Asphalt 9N with a daughter of EXLR Dakota 353G. This young female maintains a 25 for milk and a .26 for ribeye.



LOT 51 - PBR Spring Fever 688S

PBR Spring Fever 688S

Lot 51

Lim-Flex (50/45.5) Heifer 11.01.06 PBR 688S
LFF 1877113 Double Polled Black

EXAR LAVA 1940 E&B 1483 SCOTHCAMAN 5041 RR 9440 SCOTCH CAP 1483
EXAR JUMBO BLACKBIRD 7707 LADY 183 TRAVELER 334
EXLR LIMITED EDITION 765J EXLR POLLED BENCHMARK709G
EXLR GLENDA 7295M WULFS GLENDA 7021G
EXLR GLENDA 083J WULFS GUARDIAN 5074G
WULFS GLENDA 7021G

	CE	BW	WW	YW	MA	CM	SC	DC	CW	RE	YG	MS	SMI
EPDs 10	-2.3	26	63	16	4	-	-	7	0.10	0.04	-0.01	37	
ACC. 12	30	24	12	14	11	-	-	P	P	P	P	-	

Bred to Smackdown; due 10.19.08.

This 50% Limflex heifer is sired by EXAR Lava, a purebred Angus bull sired by E & B Scotchman 5041. She is from a daughter of EXLR Limited Edition going back to EXLR Glenda. This young heifer is made just like we like them. She is feminine up through her front end and stands strong and with a very complete profile.

PBR So Fly 658S

Lot 53

PB Limousin (100/89.6) Heifer 9.06.06 PBR 658S
NPF 1868087 Double Polled Double Black

LESF ASPHALT 9N GPF BLAQUE RULON BLACK DIAMOND
GPF EXTRA SWEET ELITE QUAIL RUN RAMONA BP
LKCC TOMAHAWKS TOUCHDOWN
HC EXTRAORDINARY HCR 61X
MAGS LEONA WULFS GAGE 5158G WULFS ENDURANCE 3097E
WULFS EMBER 5158E
PLLP POLLED WEBSTER 30X
MK UPSY IN COMMAND

	CE	BW	WW	YW	MA	CM	SC	DC	CW	RE	YG	MS	SMI
EPDs 0	4.1	37	74	24	-3	0.4	15	-3	0.30	-0.13	-0.13	37	
ACC. 20	35	30	21	16	19	18	P	P	P	P	P	-	

Bred to PBR Safe Bet 6123; due 10.11.08.

658S is black, double polled and sired by the leading homo/homo sire LESF Asphalt 9N. He is now the leading herd sire for Heartfelt Farms in Pennsylvania and has been one of the breed's most widely used sires. This young heifer goes back to Wulf's Gage on the bottom side of her pedigree.

PBR Silk Sheets 663S

Lot 52

PB Limousin (100/88.6) Heifer 9.10.06 PBR 663S
NPF 1868090 Double Polled Double Black

LESF ASPHALT 9N GPF BLAQUE RULON BLACK DIAMOND
GPF EXTRA SWEET ELITE QUAIL RUN RAMONA BP
LKCC TOMAHAWKS TOUCHDOWN
HC EXTRAORDINARY HCR 61X

DMNY SURE N STYLE DVFC COOKIE MONSTER 108H CHAZ FIRST CHOICE 6004F
JCL MARIGOLD SLVL ANGEL COOKIE 140D
WULF'S HOME RUN 9226AA
JCL MADELINE

	CE	BW	WW	YW	MA	CM	SC	DC	CW	RE	YG	MS	SMI
EPDs -1	4.8	43	80	16	-1	0.5	12	-3	0.26	-0.14	-0.05	42	
ACC. 20	33	28	19	14	19	18	P	P	P	P	P	-	

Bred to PBR Safe Bet 6123; due 10.16.08.

This young black and double polled heifer is a result of the blending of two progressive pedigree's in LESF Asphalt 9N and DVFC Cookie Monster. She stands on big feet and has that extra bone and substance needed to produce quality down the road.

PBR Southern Jewel 671S

Lot 54

PB Limousin (100/92.4) Heifer 9.24.06 PBR 671S
NPF 1868094 Double Polled Double Black

TUBB LAW DOG 009L EXLR POLLED BENCHMARK709G WULFS DAWSON 4421D
CHR JO DEE PMDB ALLIANCE
HUGS FULLBACK 81F
CHR MIDNIGHT PLAYMATE

PBR NUTRONESS 464P EXLR GAUCHO 362K WULFS GUARDIAN 5074G
PBR NUTRO-NAS 047 EXLR ALLIANCE 337G
CABIN CREEK NUTRON 115G
TRAK FARRAH

	CE	BW	WW	YW	MA	CM	SC	DC	CW	RE	YG	MS	SMI
EPDs 8	1.1	33	60	22	1	0.3	21	22	0.52	-0.11	-0.13	36	
ACC. 19	32	21	14	12	18	P	P	P	P	P	P	-	

Bred to Sasquatch due 10.02.08.

Jewel is just what you will think you got if you add this heifer to your program. She is very feminine in her front end, level from her hooks to her pens and very sound in her movement. She is from a daughter of EXLR Gaucho and is a top replacement heifer that carries the PBR tattoo.

Spring
COW/CALE
Pairs



**LOT 55 -
PBRs Special Occasion 6109**



**LOT 55A -
PBRs Upper Echelon 820U**

PBRs Special Occasion 6109

Lot **55**

Lim-Flex (50/45.4) Heifer
LFF 1857491

2.26.06
Double Polled

PBRs 6109S
Double Black

GPF BLAQUE RULON
CARROUSELS PEAK POWER
HC CHERISH

BLACK DIAMOND
QUAIL RUN RAMONA BP
HC POLLED MANHATTAN
HACO MISTY MORNING

BT TRAVELER 132K
BT ROSE 497N
COCHANGUS ROSE J3

SITZ TRAVELER 043
BT EVERELDA ENTENSE 57D
COCHANGUS TRAVELER 382
COCHANGUS ROSE 8127

	CE	BW	WW	YW	MA	CM	SC	DC	CW	RE	YG	MS	SMI
EPDs	5	2.2	50	86	28	0	0.6	-	16	0.28	0.07	0.00	44
ACC.	15	32	27	22	12	13	10	-	P	P	P	P	-

Bred 6.06 to Sasquatch; safe. PE 7.18 - 8.20.08 to PBRs 724T.

LOT 55A - PBRs Upper Echelon 820U - Bull, Lim-Flex (50/44.8); Double Polled; Double Black; 03.05.08; PBRs 820U; LFM 1909335. Sired by EF Smack Down 764S. BW: 88 lbs.; WW: 775 lbs.

	CE	BW	WW	YW	MA	CM	SC	DC	CW	RE	YG	MS	SMI
EPDs	7	-0.3	42	80	28	2	-	-	11	0.01	0.16	0.08	44
ACC.	P	P	P	P	P	P	-	-	P	P	P	P	-



LOT 56 - PBR Sndy 6110S



LOT 56A - PBR Umbelina 806U

PBR Sandy 6110S *Lot 56*

Lim-Flex (50/44.1) Heifer 2.27.06 PBR S 6110S
LFF 1857492 Homozygous Polled Double Black

EF MAIN STAY 541M
EXLR 231J
AUTO BLACK DAKOTA 129J EXLR DAKOTA 353G
DFLC JET SET BPC 34Y
WULFS GUARDIAN 5074G
EXLR LUVLY 081F

BT MINA 288M
BT MINA 63D
BT BANDO 196J
BON VIEW BANDO 598
G D A R RACHEL 838
RT RIGHT COMBINATION 29Z
MI NIGHT

CE	BW	WW	YW	MA	CM	SC	DC	CW	RE	YG	MS	SMI
EPDs 8	0.0	39	82	17	4	-0.2	-	-9	-0.12	0.08	0.06	43
ACC. 18	33	28	24	15	17	12	-	P	P	P	P	-

Bred 6.06 to Smackdown. PE 7.18 - 8.20.08 to RLAY.

LOT 56A - PBR Umbelina 806U - Female, Lim-Flex (62/55.8);
Double Polled; Double Black; 02.14.08; PBR S 806U; LFM
1909330. Sired by MAGS Remote. WW: 690 lbs.

CE	BW	WW	YW	MA	CM	SC	DC	CW	RE	YG	MS	SMI
EPDs 10	-0.2	47	92	19	5	0.3	12	16	-0.08	0.19	0.11	47
ACC. P	P+	P	P	P	P	P	P	P	P	P	P	-

PBR Sweetness 6112S *Lot 57*

Lim-Flex (50/44.1) Heifer 3.15.06 PBR S 6112S
LFF 1857494 Homozygous Polled Double Black

EF MAIN STAY 541M
EXLR 231J
AUTO BLACK DAKOTA 129J EXLR DAKOTA 353G
DFLC JET SET BPC 34Y
WULFS GUARDIAN 5074G
EXLR LUVLY 081F

BT MISS BLISS 702M
BT MISS BLISS 553J
BT ULTRA 232K
OSU 6T6 ULTRA
RM BLACK MAGIC 7574 E A R
BT DIRECTION 65D
BT MISS BLISS 386E

CE	BW	WW	YW	MA	CM	SC	DC	CW	RE	YG	MS	SMI
EPDs 8	0.3	38	78	22	4	-	-	-5	-0.17	0.16	0.11	44
ACC. 18	32	22	18	14	17	-	-	P	P	P	P	-

Bred 6.27 to Scotland; safe. PE 7.18 - 8.20.08 to RLAY 13N.

LOT 57A - PBR Unexpected Blessing - Female, Lim-Flex
(50/44.4); Double Polled; Double Black; 04.11.08; PBR S 850U;
LFM 1909342. Sired by PBR S Safe Bet 6123. WW: 545 lbs.

CE	BW	WW	YW	MA	CM	SC	DC	CW	RE	YG	MS	SMI
EPDs 10	-0.2	47	92	19	5	0.3	12	16	-0.08	0.19	0.11	47
ACC. P	P+	P	P	P	P	P	P	P	P	P	P	-



**LOT 58 -
PBRs Something Sweet 599S**



**LOT 58A -
PBRs U Know It 824U**

PBRs Something Sweet 599S *Lot 58*

Lim-Flex (100/89.4) Heifer 1.05.06 PBRs 599S
NPF 1843431 Double Polled Red

EF MAIN STAY 541M AUTO BLACK DAKOTA 129J EXLR DAKOTA 353G
EXLR 231J DFCL JET SET BPC 34Y
WULFS GUARDIAN 5074G
EXLR LUVLY 081F

MAGS JODI CHAZ FIRST CHOICE 6004F COLE FIRST DOWN 46D
SLVL SABLE COOKIE 381E CHAZ MISS ROXANNE 92C
WULFS QUA
EAFM COOKIE

	CE	BW	WW	YW	MA	CM	SC	DC	CW	RE	YG	MS	SMI
EPDs	4	1.3	37	79	19	7	-0.3	24	5	0.27	-0.04	-0.04	40
ACC.	P	34	29	21	16	P	17	P	P	P	P	P	-

PE 7.18 - 8.20.08 to RLAY 13N.

LOT 58A - PBRs U Know It 824U - Bull, PB Limousin (100/89.7); Double Polled; Black; 3.14.08; PBRs 824U; LFM 1909337. Sired by KRVN Picate 036P. BW: 69 lbs.; WW: 640 lbs.

	CE	BW	WW	YW	MA	CM	SC	DC	CW	RE	YG	MS	SMI
EPDs	6	1.4	44	88	20	6	0.1	17	14	0.16	0.03	-0.03	42
ACC.	P	P+	P	P	P	P	-	-	P	P	P	P	-

PBRs Sara Beth 611S *Lot 59*

Lim-Flex (50/42.7) Heifer 2.27.06 PBRs 6111S
NPF 1857493 Double Polled Black

CARROUSELS NASDAQ AUTO BLACK DAKOTA 129J EXLR DAKOTA 353G
CARROUSELS JAMAICA DFCL JET SET BPC 34Y
COLE FIRST DOWN 46D
CANE RIDGE CELEST 6169

BT EVERELDA ENTENSE 174N CA FUTURE DIRECTION 5321 GAR PRECISION 1680
CA MISS POWER FIX 308
RA BEARTOOTH ABERDEER
SITZ EVERELDA ENTENSE 190

	CE	BW	WW	YW	MA	CM	SC	DC	CW	RE	YG	MS	SMI
EPDs	8	-0.1	39	77	30	3	0.3	6	32	0.05	0.23	0.30	51
ACC.	18	32	27	22	15	17	11	P	P	P	P	P	-

PE 7.18 - 8.20.08 to PBRs 724T; safe.

LOT 59A - PBRs Unique 856U - Female, Lim-Flex (50/43.7); Double Polled; Double Black; 4.22.08; PBRs 856U; LFM 1909344. Sired by PBRs Safe Bet 6123.

	CE	BW	WW	YW	MA	CM	SC	DC	CW	RE	YG	MS	SMI
EPDs	7	-0.4	45	86	25	1	0.4	-	-	-	-	-	-
ACC.	P	P+	P	P	P	P	P	-	-	-	-	-	-



PBR Southern Comfort 5104 Lot 60

PB Limousin (100/89.4) Heifer 1.06.06 Double Polled PBR 5104S Double Black
NPF 1843440

EF MAIN STAY 541M AUTO BLACK DAKOTA 129J EXLR DAKOTA 353G
EXLR 231J DFLC JET SET BPC 34Y
WULFS GUARDIAN 5074G
EXLR LUVLY 081F

MAGS JODI CHAZ FIRST CHOICE 6004F COLE FIRST DOWN 46D
SLVL SABLE COOKIE 381E CHAZ MISS ROXANNE 92C
WULFS QUARTERBACK 4222B
EAFM COOKIE

CE	BW	WW	YW	MA	CM	SC	DC	CW	RE	YG	MS	SMI
EPDs 4	3.3	44	88	19	7	-0.3	24	5	0.27	-0.04	-0.04	42
ACC. P	34	29	21	16	P	P	P	P	P	P	P	-

Bred 6.27 to Picante; safe. PE 7.18 - 8.20.08 to RLAY 13N.

LOT 60A - PBR Ute 804U - Bull, PB Limousin (100/89.7);
Double Polled; Red; 02.10.08; PBR 804U; NPF
1909328. Sired by MDRC Tubb Lucky Strike. BW: 71 lbs.

CE	BW	WW	YW	MA	CM	SC	DC	CW	RE	YG	MS	SMI
EPDs 8	2.2	45	82	20	7	0.2	17	16	0.16	0.03	-0.02	42
ACC. P	P+	P	P	P	P	P	P	P	P	P	P	-

MGPS Raven 556R Lot 62

PB Limousin (100/88.6) Heifer 5.08.05 Double Polled MGPS 556R Black
NPF 1822566

KRVN NASKAR 013N GPFF BLAQUE RULON BLACK DIAMOND
WL JU JU GAL 149J QUAIL RUN RAMONA BP
COLE FIRST DOWN 46D
CHR GOSSIP GAL

MAGS NATASHA AUTO BLACK DAKOTA 129J EXLR DAKOTA 353G
MAGS JULIET DFLC JET SET BPC 34Y
CHAZ FIRST CHOICE 6004F
SLVL SABLE COOKIE 381E

CE	BW	WW	YW	MA	CM	SC	DC	CW	RE	YG	MS	SMI
EPDs 6	1.5	44	85	19	6	0.7	15	19	0.51	0.01	-0.18	37
ACC. 27	35	30	18	19	25	15	P	P	P	P	P	-

Bred 7.15 to Picante; safe. PE to PBR 724T.

LOT 62A - PBR Untold Riches 866U - Female, PB Limousin
(100/88.4); Double Polled; Double Black; 5.21.08; PBR
866U; NPF 1909349. Sired by RLAY Ruler 13N.

CE	BW	WW	YW	MA	CM	SC	DC	CW	RE	YG	MS	SMI
EPDs 7	3.4	53	92	23	-1	0.7	17	27	0.57	-0.08	-0.03	45
ACC. P	P+	P	P	P	P	P	P	P	P	P	P	-

PBR Narcis 504R Lot 64

PB Limousin (100/89.3) Heifer 1.16.05 Double Polled PBR 504R Double Black
NPF 1822569

JCL BAXTER COLE FIRST DOWN 46D LKCC TOMAHAWKS TOUCHDOWN
LKCC SMITH CATTLE 452B 2 155P
LKCC BLACK LOTO 1079W
LKCC SMITH CATTLE 711S

PBR NARCISSA 513N MDRC TUBB LUCKY STRIKE TUBB GRINDER 749D
PBR JOSIE EXLR 120J
EXLR DAKOTA 353G
MAGS FOLLOW YOUR HEART

CE	BW	WW	YW	MA	CM	SC	DC	CW	RE	YG	MS	SMI
EPDs 9	0.2	41	77	34	5	0.8	12	18	0.19	-0.04	0.10	46
ACC. 28	36	27	20	20	25	10	P	P	P	P	P	-

Bred 7.15 to Pure Power; safe. PE 7.18 - 8.20.08 to RLAY 13N.

LOT 64A - PBR Ute Country 867U - Bull, PB Limousin
(100/88.7); Double Polled; Double Black; 5.21.08; PBR
867U; NPM 1909350. Sired by RLAY Ruler 13N. BW: 71 lbs.

CE	BW	WW	YW	MA	CM	SC	DC	CW	RE	YG	MS	SMI
EPDs 9	0.3	37	71	25	3	0.5	-	15	0.39	-0.07	-0.04	40
ACC. P	P+	P	P	P	P	P	-	P	P	P	P	-

PBR Sweet Thing Lot 61

PB Limousin (100/88.9) Heifer 3.21.06 Double Polled PBR 614S Double Black
NPF 1855254

EF MAIN STAY 541M AUTO BLACK DAKOTA 129J EXLR DAKOTA 353G
EXLR 231J DFLC JET SET BPC 34Y
WULFS GUARDIAN 5074G
EXLR LUVLY 081F

PBR CAFFERINE FREE 0315 COLE WULF HUNT COLE FIRST DOWN 46D
MAGS LEILA COLE CATALINA 3309C
WULFS GAGE 5158G
MAGS CAFFEINE FREE

CE	BW	WW	YW	MA	CM	SC	DC	CW	RE	YG	MS	SMI
EPDs 9	1.2	39	84	21	5	-0.1	25	1	0.27	-0.06	-0.04	41
ACC. 20	34	28	24	15	19	17	P	P	P	P	P	-

PE 7.18 - 8.20.08 to PBR 724T; safe.

LOT 61A - PBR Umika 857U - Bull, Lim-Flex (75/66.8);
Double Polled; Double Black; 4.25.08; PBR 857U; LFM
1909345. Sired by PBR Safe Bet 6123. BW: 68 lbs.

CE	BW	WW	YW	MA	CM	SC	DC	CW	RE	YG	MS	SMI
EPDs 8	0.9	45	89	21	2	0.2	-	-	-	-	-	-
ACC. P	P+	P	P	P	P	P	-	-	-	-	-	-

PBR Rita 518R Lot 63

PB Limousin (100/91.4) Heifer 3.01.05 Double Polled PBR 518R Black
NPF 1829576

JCL LODESTAR 27L HUNTS HI-LITER 245G WADDLES COBALT 3106
LOGAN'S CHEERLEADER 280G TNUH MISS C245
COLE FIRST DOWN 46D
TTCC CONFIDENCE MAKER

PBR JOSIE EXLR DAKOTA 353G WULF'S COUNT DOWN 9251C
MAGS FOLLOW YOUR HEART CANE RIDGE DAPHNE 011D
ROKR DROVER
MAGS DANCING FOR MONEY

CE	BW	WW	YW	MA	CM	SC	DC	CW	RE	YG	MS	SMI
EPDs 10	1.0	45	89	19	9	0.7	11	32	0.31	0.05	0.07	46
ACC. P	34	30	26	21	P	20	P	P	P	P	P	-

Bred 7.11 to Sasquatch; safe. PE to PBR 724T.

LOT 63A - PBR U Haul 870U - Bull, PB Limousin (100/89.8);
Double Polled; Double Black; 5.20.08; PBR 870U; NPM
1909352. Sired by RLAY Ruler 13N. BW: 68 lbs.

CE	BW	WW	YW	MA	CM	SC	DC	CW	RE	YG	MS	SMI
EPDs 9	0.2	40	77	18	5	0.5	-	22	0.45	-0.01	-0.06	40
ACC. P	P+	P	P	P	P	P	-	P	P	P	P	-

PBR Sweet Sally Lot 65

PB Limousin (100/85.9) Heifer 3.08.06 Polled PBR 607S Double Black
NPF 1855248

AUTO BLACK DAKOTA 129J EXLR DAKOTA 353G WULF'S COUNT DOWN 9251C
DFLC JET SET BPC 34Y CANE RIDGE DAPHNE 011D
GENERAL LEE LOJW 40S
DFLC BPC 20U

MAGS JESSICA WULFS GUARDIAN 5074G WULFS RAMBLER 8400X
MAGS GO IN STYLE WULFS EXAMPLE 5074E
COLE FIRST DOWN 46D
WULF'S MANDARIN 1121A

CE	BW	WW	YW	MA	CM	SC	DC	CW	RE	YG	MS	SMI
EPDs 5	1.8	41	84	23	6	0.4	20	15	0.33	-0.07	-0.10	39
ACC. 24	36	30	26	23	24	19	P	P	P	P	P	-

PE 7.18 - 8.20.08 to RLAY 13N; safe.

LOT 65A - PBR Udell 851U - Bull, Lim-Flex (75/65.3);
Double Polled; Double Black; 04.11.08; PBR 851U;
LFM 1909343. Sired by PBR Safe Bet 6123. BW: 62 lbs.

CE	BW	WW	YW	MA	CM	SC	DC	CW	RE	YG	MS	SMI
EPDs 6	0.4	46	89	22	3	0.5	-	-	-	-	-	-
ACC. P	P+	P	P	P	P	P	-	-	-	-	-	-



**LOT 66 -
MAGS Melissa 146M**

**LOT 66A -
PBRs University Girl 802U**

MAGS Melissa 146M *Lot 66*

PB Limousin (100/66.1) Heifer 2.09.02 MAGS 146M
NPF 1695068 Double Polled Black

COLE FIRST DOWN 46D LKCC TOMAHAWKS TOUCHDOWN
COLE WULF HUNT 2 155P
 COLE CATALINA 3309C MAYS BLACK JET
 COLE 21 R
 CANE RIDGE BLACK DRAK WULFS DAWSON 4421D
ROYAL DRL 106K WULF'S AUTUMN ANGEL 2505B

	CE	BW	WW	YW	MA	CM	SC	DC	CW	RE	YG	MS	SMI
EPDs	9	3.1	40	77	21	0	0.2	17	3	0.42	-0.15	0.01	44
ACC.	27	39	32	22	33	24	18	P	P	22	21	21	-

Bred 7.15 to Deuce; safe. PE 7.18 - 8.20.08 to RLAY 13N.

LOT 66A - PBRs University Girl 802U - Female, PB Limousin (100/77.6); Double Polled; Double Black; 02.05.08; PBRs 802U; NPF 1909326. Sired by DHVO Deuce 132R. WW: 785 lbs.

	CE	BW	WW	YW	MA	CM	SC	DC	CW	RE	YG	MS	SMI
EPDs	7	3.4	53	92	23	-1	0.7	17	27	0.57	-0.08	-0.03	45
ACC.	P	P+	P	P	P	P	P	P	P	P	P	P	-

PBRs Sugar Lips *Lot 67*

PB Limousin (100/87.6) Heifer 4.27.06 PBRs 636S
NPF 1855262 Double Polled Double Black

GPF BLAQUE RULON BLACK DIAMOND
RLAY RULER 13N QUAIL RUN RAMONA BP
 MISS NATRONA 10D LKCC TOMAHAWKS TOUCHDOWN
 HONY POLLED QUEEN 903X
 MAGS JUMANJI KRMC BLACK LEGACY 917B
MAGS NATASHA MAGS BLACK & SATIN
 MAGS GO IN STYLE COLE FIRST DOWN 46D
 WULF'S MANDARIN 1121A

	CE	BW	WW	YW	MA	CM	SC	DC	CW	RE	YG	MS	SMI
EPDs	6	0.8	39	74	22	1	0.7	-	15	0.33	0.00	0.02	42
ACC.	14	31	23	17	11	13	10	-	P	P	P	P	-

PE 7.18 - 8.20.08 to PBRs 724T.

LOT 67A - PBRs Ulla 861U - Female, Lim-Flex (50/43.8); Double Polled; Double Black; 5.02.08; PBRs 861U; LFF 1909347. Sired by Sedgwicks Direction 4796.

	CE	BW	WW	YW	MA	CM	SC	DC	CW	RE	YG	MS	SMI
EPDs	-	-	-	-	-	-	-	-	-	-	-	-	-
ACC.	-	-	-	-	-	-	-	-	-	-	-	-	-





**LOT 68 -
PBRSS Jessica 0214**

PBRSS Jessica 0214 *Lot 68*

PB Limousin (100/85.9) Heifer 4.08.02 PBRSS 214M
NPF 1720269 Homozygous Polled Black

AUTO BLACK DAKOTA 129J EXLR DAKOTA 353G WULF'S COUNT DOWN 9251C
DFLC JET SET BPC 34Y CANE RIDGE DAPHNE 011D
GENERAL LEE LOJW 40S
DFLC BPC 20U

MAGS JESSICA WULFS GUARDIAN 5074G WULFS RAMBLER 8400X
WULFS EXAMPLE 5074E
MAGS GO IN STYLE COLE FIRST DOWN 46D
WULF'S MANDARIN 1121A

	CE	BW	WW	YW	MA	CM	SC	DC	CW	RE	YG	MS	SMI
EPDs	7	1.0	44	87	21	6	0.5	20	15	0.33	-0.07	-0.10	40
ACC.	29	P	34	P	26	P	21	P	27	P	28	P	19

Bred 7.08 to Sasquatch; safe. PE 7.18 - 8.20.08 to RLAY 13N.

LOT 68A - PBRSS Umay 847U - Female, PB Limousin (100/86.2); Double Polled; Double Black; 4.10.08; PBRSS 847U; NPF 1909340. Sired by LVLS Secret Weapon 4408K. WW: 555 lbs.

	CE	BW	WW	YW	MA	CM	SC	DC	CW	RE	YG	MS	SMI
EPDs	6	1.3	55	101	32	9	0.8	18	25	0.19	0.01	0.05	48
ACC.	P	P+	P	P	P	P	P	P	P	P	P	P	-

PBRSS Dream Girl 0319 *Lot 69*

PB Limousin (100/93.1) Heifer 2.13.03 PBRSS 319N
NPF 1725934 Double Polled Black

MAGS LITTLE BROTHER EXLR DAKOTA 353G WULF'S COUNT DOWN 9251C
DJ ESSENCE CANE RIDGE DAPHNE 011D
WULF'S POLLED PROGRESS
GOLDENVIEW THERESA GVC486

ALCM DREAM GIRL 176L EXLR POLLED BENCHMARK709G WULFS DAWSON 4421D
WULFS DREAM GIRL 4109D PMDB ALLIANCE
WULF'S CHALLENGER 6044Y
WULF'S EDINA 9053X

	CE	BW	WW	YW	MA	CM	SC	DC	CW	RE	YG	MS	SMI
EPDs	4	2.2	36	66	22	0	-0.1	11	0	0.21	-0.09	-0.06	39
ACC.	26	P	39	P	28	P	22	P	29	P	23	P	19

Bred 5.01 to Pure Power; safe. PE 7.18 - 8.20.08 to RLAY 13N.

LOT 69A - PBRSS Upton 803U - Bull, PB Limousin (100/91.5); Double Polled; Double Black; 2.07.08; PBRSS 803U; NPM 1909327. Sired by Carrousel Pure Power. BW: 83 lbs.; WW: 870 lbs.

	CE	BW	WW	YW	MA	CM	SC	DC	CW	RE	YG	MS	SMI
EPDs	4	3.5	47	80	19	2	0.5	7	20	0.51	-0.06	-0.10	41
ACC.	P	P+	P	P	P	P	P	P	P	P	P	P	-

MAGS Mandarin 117L *Lot 70*

PB Limousin (100/87.4) Heifer 1.07.01 MAGS 117L
NPF 1626360 Double Polled Red

EXLR DAKOTA 353G WULF'S COUNT DOWN 9251C LKCC TOMAHAWKS TOUCHDOWN
CANE RIDGE DAPHNE 011D MISS WOLFETTE 9051X
WULFS RAMBLER 8400X
YKCC MISS IRONSIDE 110NS

MAGS GO IN STYLE COLE FIRST DOWN 46D LKCC TOMAHAWKS TOUCHDOWN
WULF'S MANDARIN 1121A 2 155P
POLLED PACK LEADER 1182U
MISS WOLFETTE 3023R

	CE	BW	WW	YW	MA	CM	SC	DC	CW	RE	YG	MS	SMI
EPDs	4	1.8	36	73	25	6	0.8	9	5	0.18	-0.11	0.06	44
ACC.	33	P	44	P	37	P	31	P	27	P	26	P	26

Bred 8.18 to RLAY 13N.LOT 70A - PBRSS Utah 848U - Female, PB Limousin (100/88.2); Double Polled; Black; 4.10.08; PBRSS 848U; NPF 1909341. Sired by DHVO Trey 133R BW: 75 lbs.; WW: 610 lbs.

	CE	BW	WW	YW	MA	CM	SC	DC	CW	RE	YG	MS	SMI
EPDs	3	2.3	49	89	25	2	0.9	14	-	0.33	-0.10	-0.02	45
ACC.	P	P+	P	P	P	P	P	P	-	P	P	P	-

PBRS Mae 553R

Lot 71

PB Limousin (100/91.0) Heifer 4.25.05
NPF 1822598 Horned PBRS 553R
Double Black

TNUH BLUE PRINT 245H WADDLES COBALT 3106 D&M POLLED BRITE-LITES
TNUH MISS C245 MISS WOLFETTE 9230X
RUNL 486A
MS ROTT 172A

MAGS MAE LVLS POLLED BLACK JACK MAYS BLACK JET
MAGS JODI LVLS REBECA
CHAZ FIRST CHOICE 6004F
SLVL SABLE COOKIE 381E

CE	BW	WW	YW	MA	CM	SC	DC	CW	RE	YG	MS	SMI
EPDs 0	3.1	49	90	23	-2	0.5	18	41	0.63	0.01	0.02	45
ACC. 27	35	31	25	25	18	P	P	P	P	P	P	-

Bred 6.27 to Ace; safe. PE 7.18 - 8.20.08 to RLAY 13N.

LOT 71A - PBRS Utopian Queen 840U - Female, PB Limousin (100/90.5); Polled; Double Black; 4.06.08; PBRS 840U; NPF 1909338. Sired by KRVN Picante 036P. WW: 575 lbs.

CE	BW	WW	YW	MA	CM	SC	DC	CW	RE	YG	MS	SMI
EPDs 4	2.8	50	93	22	2	0.5	14	32	0.34	0.04	0.00	45
ACC. P	P+	P	P	P	P	P	P	P	P	P	P	-

PBRS Something Different

Lot 72

PB Limousin (100/91.2) Heifer 1.21.06
NPF 1843432 Double Polled PBRS 601S
Red

MAGS KABOOM EXLR DAKOTA 353G WULF'S COUNT DOWN 9251C
MAGS GO IN STYLE CANE RIDGE DAPHNE 011D
COLE FIRST DOWN 46D
WULF'S MANDARIN 1121A

MAGS FOLLOW YOUR HEART ROKR DROVER BLAZER SLBO 512B
MAGS DANCING FOR MONEY MAGS ANNIE
WULF'S HOME RUN 9226AA
VRCC JOSIE 004U

CE	BW	WW	YW	MA	CM	SC	DC	CW	RE	YG	MS	SMI
EPDs 4	3.5	43	81	15	3	0.9	-1	16	0.51	-0.20	0.04	46
ACC. P	35	31	23	21	P	19	P	P	P	P	P	-

PE 7.18 - 8.20.08 to RLAY 13N.

LOT 72A - PBRS Unna 814U - Female, PB Limousin (100/90.7); Double Polled; Black; 2.21.08; PBRS 814U; NPF 1909332. Sired by KRVN Pablo 011P. WW: 630 lbs.

CE	BW	WW	YW	MA	CM	SC	DC	CW	RE	YG	MS	SMI
EPDs -	-	-	-	-	-	-	-	-	-	-	-	-
ACC. -	-	-	-	-	-	-	-	-	-	-	-	-

PBRS She's A Lady

Lot 73

Lim-Flex (50/45.5) Heifer 2.23.06
LFF 1855247 Double Polled PBRS 604S
Homozygous Black

JCL HI LODE MASTER TIP HUNTS HI-LITER 245G WADDLES COBALT 3106
JCLC 155J TNUH MISS C245
SPUR TRAVEL MASTER 6092
FOUNDATION COW

KRVN NICCOLETTE 353N GPF BLAQUE RULON BLACK DIAMOND
KRVN 013K QUAIL RUN RAMONA BP
DAVIS NEW TREND 8134
FOUNDATION COW

CE	BW	WW	YW	MA	CM	SC	DC	CW	RE	YG	MS	SMI
EPDs 6	0.9	49	90	19	1	0.4	-	10	0.18	0.08	0.07	47
ACC. P	30	24	18	10	P	P	-	P	P	P	P	-

Bred 6.22 to Smackdown; safe. PE 7.18 - 8.20.08 to PBRS 724T.

LOT 73A - PBRS User Friendly 822U - Female, Lim-Flex (62/56.5); Double Polled; Double Black; 3.07.08; PBRS 822U; LFF 1909336. Sired by MAGS Remote. WW: 650 lbs.

CE	BW	WW	YW	MA	CM	SC	DC	CW	RE	YG	MS	SMI
EPDs 9	1.7	52	96	20	4	0.6	-	26	0.08	0.17	0.12	49
ACC. P	P+	P	P	P	P	P	-	P	P	P	P	-

Proof of Progress

Limousin Sale



Reference - PBRs Safe Bet 6123S

Safe Bet is the leading 50% Limflex sire that is going to make a huge impact on the cows at P Bar S and the females in this sale. He is homozygous polled, homozygous black and a known son of GPFF Blaque Rulon. He is made perfect and has the balance, structure and muscle pattern we know you will like.

PBRs Real Lucky

Lot 74

PB Limousin (100/92.2) Heifer 12.27.05 Polled PBRs 5102R Red
NPF 1843262

HIGHLAND MILESTONE	EXLR POLLED AUSTIN 265J CM POLLED KATIE	EXLR POLLED RESOLVE 175G OAKM LADY 302D WULFS DAWSON 4421D MISS WULFETTE 4163D
KEHG JULIET 10H	WULFS RAMBLER 8400X TLTL POLLED PEACHES 007B	POLLED PACK LEADER 1182U T TRI PURECHO 100K POLLED POWERHOUSE D&M MISS PUNCH 124T

CE	BW	WW	YW	MA	CM	SC	DC	CW	RE	YG	MS	\$MI
EPDs 5	3.7	46	80	17	3	0.1	10	18	0.33	-0.04	-0.02	43
ACC. P	P	P	P	P	P	P	P	P	P	P	P	-

Bred 06.04.08 to Picante; safe. PE 7.18 - 8.20.08 to RLAY 13N.
LOT 74A - PBRs U Know It 807U - Female, PB Limousin (100/91.2); Double Polled; Black; 2.16.08; PBRs 807U; LFF 1909331. KRVN Pablo 011P. WW: 680 lbs.

CE	BW	WW	YW	MA	CM	SC	DC	CW	RE	YG	MS	\$MI
EPDs 4	4.1	48	83	17	0	0.4	11	20	0.51	-0.04	-0.07	42
ACC. P	P+	P	P	P	P	P	P	P	P	P	P	-

PBRs Robin 5105R

Lot 75

PB Limousin (100/93.0) Heifer 11.12.05 Double Polled PBRs 5105R Red
NPF 1838484

MAGS KABOOM	EXLR DAKOTA 353G MAGS GO IN STYLE	WULF'S COUNT DOWN 9251C CANE RIDGE DAPHNE 011D COLE FIRST DOWN 46D WULF'S MANDARIN 1121A
TRAK'S SOFT WHISPER	OTSS BROKER 2124B JCL MOLLY	YKCC TOP LINE 180X YKCL MISS VIRGINIAN R103V TEXS RANGER PRIMO SWPL NAVAJO MAIDEN

CE	BW	WW	YW	MA	CM	SC	DC	CW	RE	YG	MS	\$MI
EPDs 4	3.2	40	78	20	5	0.6	5	11	0.35	-0.12	0.00	43
ACC. 2624	36	30	21	22	24	19	P	P	P	P	P	-

PE 7.18 - 8.20.08 to PBRs 724T.
LOT 75A - PBRs U Turn 869U - Female, Limi-Flex (75/68.9); Double Polled; Black; 5.19.08; PBRs 869U; LFF 1909351. Sired by PBRs Safe Bet 6123.

CE	BW	WW	YW	MA	CM	SC	DC	CW	RE	YG	MS	\$MI
EPDs 5	1.5	46	86	20	2	0.6	-	-	-	-	-	-
ACC. P	P	P	P	P	P	P	-	-	-	-	-	-



**Lot 78 -
PBRs Leila 521R**

**FALL
Calving Cows**

MAGS Natasha

Lot 76

PB Limousin (100/87.0) Heifer 2.06.03 MAGS 2014N
NPF 1720283 Double Polled Homozygous Black

MAGS JUMANJI KRMC BLACK LEGACY 917B NICO POLLED LEGACY
MAGS BLACK & SATIN HOLIJO 103
PLLP POLLED WEBSTER 30X
WLCC XPOSE 41X

MAGS GO IN STYLE COLE FIRST DOWN 46D LKCC TOMAHAWKS TOUCHDOWN
WULF'S MANDARIN 1121A 2 155P
POLLED PACK LEADER 1182U
MISS WOLFETTE 3023R

	CE	BW	WW	YW	MA	CM	SC	DC	CW	RE	YG	MS	SMI
EPDs	5	1.9	39	76	28	2	1.0	8	17	0.08	0.06	0.21	49
ACC.	31	40	35	30	28	29	21	P	44	41	41	40	-

Bred to RLAY 13N; due 10.23.08.

Here is a female that you can surround your program around. She is sired by the homozygous black and high marbling sire MAGS Jumanji and from the First Down daughter that goes back to MAGS Mandarin. This female is homozygous black, double polled and represents an elite status in pedigree. And to go with her great pedigree is a set of numbers that are off the charts. She has a 1.9 for birthweight, 28 for milking ability and .21 for marbling. She also has a 49 for MTI and had and adjusted IMF of 5.24. This female is a true highlight of the sale

PBRs She's The One

Lot 77

PB Limousin (100/88.9) Heifer 3.13.06 PBRs 610S
NPF 1855251 Double Polled Homozygous Black

JCL LODESTAR 27L HUNTS HI-LITER 245G WADDLES COBALT 3106
LOGAN'S CHEERLEADER 280G TNUH MISS C245
COLE FIRST DOWN 46D
TTCC CONFIDENCE MAKER

MAGS NAPELLA ANDERS JAG GREENWOODPOLLED455ROCKET
AUTO CITY NIGHTS 214H ANDERS GEMINI
COLE FIRST DOWN 46D
MISS WOLFETTE 9049X

	CE	BW	WW	YW	MA	CM	SC	DC	CW	RE	YG	MS	SMI
EPDs	12	1.5	48	98	14	10	0.6	12	36	0.17	0.18	0.14	48
ACC.	21	35	30	26	21	21	19	P	P	P	P	P	-

Homozygous black, double polled and one of the really nice young females to sell is PBRs She's The One. She is sired by the multiple trait leading sire JCL Lodestar 27L and from a daughter of Anders Jag. She has a .14 for marbling, 48 MTI and 98 for yearling weight.

LOT 77A - Bull, calved 9.01.08, double polled, homozygous black, PBRs 876U; Sired by Excellante.

PBRs Leila 521R

Lot 78

PB Limousin (100/91.6) Heifer 3.05.05 PBRs 521R
NPF 1822578 Double Polled Double Black

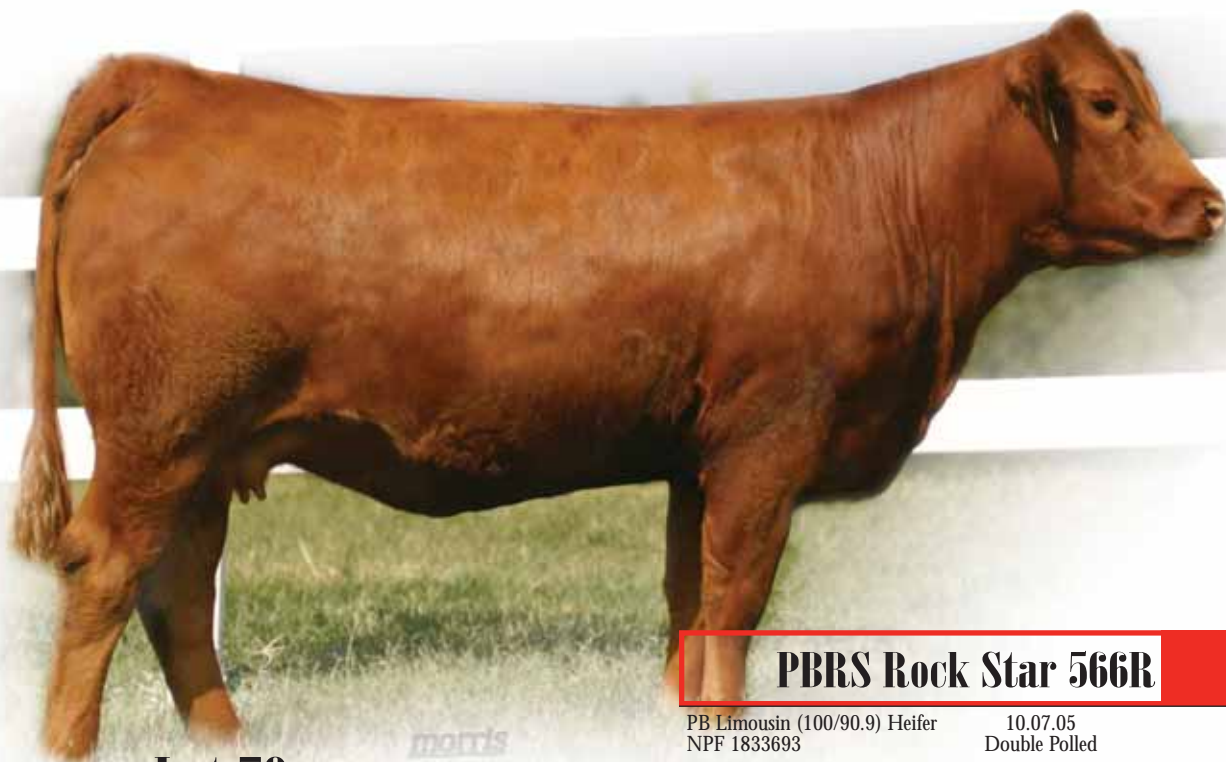
JCL LODESTAR 27L HUNTS HI-LITER 245G WADDLES COBALT 3106
LOGAN'S CHEERLEADER 280G TNUH MISS C245
COLE FIRST DOWN 46D
TTCC CONFIDENCE MAKER

MAGS LEILA WULFS GAGE 5158G WULFS ENDURANCE 3097E
MAGS CAFFEINE FREE WULFS EMBER 5158E
PLLP POLLED WEBSTER 30X
MK UPSY IN COMMAND

	CE	BW	WW	YW	MA	CM	SC	DC	CW	RE	YG	MS	SMI
EPDs	8	2.8	55	107	22	8	0.4	23	40	0.32	0.10	0.01	46
ACC.	22	35	30	27	20	22	19	P	P	P	P	P	-

Bred to Deuce; due 10.22.08.

We really like the look and the pedigree of this young female. She is black, double polled and sired by JCL Lodestar 27L and from a daughter of Wulf's Gage 5158G. This young female has a 107 for yearling weight and a .32 for her rib-eye number.



**Lot 79 -
PBRs Rock Star 566R**

PBRs Rock Star 566R

Lot 79

PB Limousin (100/90.9) Heifer
NPF 1833693

10.07.05
Double Polled

PBRs 566R
Red

GFFF BLAQUE RULON
KRVN NASKAR 013N
WL JU JU GAL 149J

BLACK DIAMOND
QUAIL RUN RAMONA BP
COLE FIRST DOWN 46D
CHR GOSSIP GAL

EXLR DAKOTA 353G
MAGS KLAIM CHECK
MAGS FOLLOW YOUR HEART

WULF'S COUNT DOWN 9251C
CANE RIDGE DAPHNE 011D
ROKR DROVER
MAGS DANCING FOR MONEY

	CE	BW	WW	YW	MA	CM	SC	DC	CW	RE	YG	MS	SMI
EPDs	6	2.3	45	81	18	4	1.0	5	18	0.66	-0.14	-0.14	39
ACC.	27	35	28	18	20	25	15	P	P	P	P	P	-

Bred to Basin Franchise; due 10.17.08.

Rock Star is what we all would be if we had a pasture full of producing females like this one. This female is sired by the thick made and stylish herd sire KRVN Naskar. She goes back to a daughter of EXLR Dakota back to MAGS Follow Your Heart.

PBRs 456P

Lot 80

PB Limousin (100/91.4) Heifer
NPF 1795131

8.11.04
Double Polled

PBRs 456P
Black

JCL LODESTAR 27L
HUNTS HI-LITER 245G
LOGAN'S CHEERLEADER 280G

WADDLES COBALT 3106
TNUH MISS C245
COLE FIRST DOWN 46D
TTCC CONFIDENCE MAKER

PBRs JOSIE
EXLR DAKOTA 353G
MAGS FOLLOW YOUR HEART

WULF'S COUNT DOWN 9251C
CANE RIDGE DAPHNE 011D
ROKR DROVER
MAGS DANCING FOR MONEY

	CE	BW	WW	YW	MA	CM	SC	DC	CW	RE	YG	MS	SMI
EPDs	11	1.9	44	89	15	9	0.7	11	32	0.31	0.05	0.07	45
ACC.	30	39	33	26	28	28	19	P	P	P	P	P	-

Bred to Sasquatch; due 10.20.08.

The cross of JCL Lodestar with EXLR Dakota has created very nice results in this young female. She is solid in her number package and has all the right parts to create future progeny of value in the near future.

PBRs She's Got the Look

Lot 81

PB Limousin (100/88.4) Heifer
NPF 1855258

4.02.06
Double Polled

PBRs 621S
Black

BLACK DIAMOND
GFFF BLAQUE RULON
QUAIL RUN RAMONA BP

CANE RIDGE BLACK DRAK
WULFS DIADEM 4260D
LKCC TOMAHAWKS TOUCHDOWN
AMBL FAVORITE GIRL 36W

EXLR DAKOTA 353G
MAGS MANDARIN 117L
MAGS GO IN STYLE

WULF'S COUNT DOWN 9251C
CANE RIDGE DAPHNE 011D
COLE FIRST DOWN 46D
WULF'S MANDARIN 1121A

	CE	BW	WW	YW	MA	CM	SC	DC	CW	RE	YG	MS	SMI
EPDs	6	0.2	36	70	19	3	0.8	12	9	0.51	-0.10	-0.04	40
ACC.	22	35	28	24	21	21	19	P	P	P	P	P	-

Bred to Sasquatch; due 11.09.08.

There is loads of muscle and performance all put together in this one female. She is sired by GFFF Blaque Rulon and from a daughter of EXLR Dakota. This Rulon daughter is from the donor, MAGS Mandarin, a daughter of MAGS Go In Style.



Lot 82 - PBRs Josie

PBRs Josie

Lot **82**

PB Limousin (100/91.9) Heifer 1.16.01 PBRs 103L
NPF 1639875 Double Polled Red

WULF'S COUNT DOWN 9251C LKCC TOMAHAWKS TOUCHDOWN
EXLR DAKOTA 353G MISS WOLFETTE 9051X
CANE RIDGE DAPHNE 011D WULF'S RAMBLER 8400X
YKCC MISS IRONSIDE 110NS

ROKR DROVER BLAZER SLBO 512B
MAGS FOLLOW YOUR HEART MAGS ANNIE
MAGS DANCING FOR MONEY WULF'S HOME RUN 9226AA
VRCC JOSIE 004U

	CE	BW	WW	YW	MA	CM	SC	DC	CW	RE	YG	MS	SMI
EPDs	3	4.3	42	78	22	3	0.8	-1	13	0.52	-0.19	-0.05	42
ACC.	51	53	42	32	33	50	23	P	46	43	43	42	-

Bred to RLAY 13N; due 11.17.08.

This brood cow has been a top producer and is one of the highlight lots in entire sale. She is very moderate in her frame, big footed and very sound in her stance. She is sired by EXLR Dakota and is from a daughter of ROKR Drover back to MAGS Dancing For Money.

Bobbie Jo 424P

Lot **83**

PB Limousin (100/91.0) Heifer 3.21.04 PBRs 424P
NPF 1776885 Double Polled Double Black

EXLR DAKOTA 353G WULF'S COUNT DOWN 9251C
PBRs BLACK DAKOTA 001 CANE RIDGE DAPHNE 011D
TRAK GLORY WULF'S HOME RUN 9226AA
WLCC BLACK PERSUASION

WULFS GAGE 5158G WULFS ENDURANCE 3097E
MAGS LEILA WULFS EMBER 5158E
MAGS CAFFEINE FREE PLLP POLLED WEBSTER 30X
MK UPSY IN COMMAND

	CE	BW	WW	YW	MA	CM	SC	DC	CW	RE	YG	MS	SMI
EPDs	2	3.7	46	85	23	2	0.4	-	27	0.56	-0.10	-0.11	41
ACC.	25	25	21	17	19	23	10	-	P	P	P	P	-

Bred to Sasquatch; due 1.13.09.

Sired by PBRs Black Dakota 001 is this black and double polled brood cow. She has proven at P Bar S that she is a top producer of purebred beef bulls and strong replacement heifers. Her daughters have been solid producers over the years and her bulls have been easy to sell.

MAGS Leona

Lot **84**

PB Limousin (100/92.3) Heifer 2.03.01 MAGS 294L
NPF 1641340 Double Polled Black

WULFS ENDURANCE 3097E WULF'S POLLED PROGRESS
WULFS GAGE 5158G WULF'S CAKE WALK 3097C
WULFS EMBER 5158E LKCC TOMAHAWKS TOUCHDOWN
MISS WOLFETTE 4221S

PLLP POLLED WEBSTER 30X POLLED PACK LEADER 1182U
MAGS CAFFEINE FREE D&M MISS MICHELIN 719U
MK UPSY IN COMMAND MR MK CAPTAIN IN COMMAND
GRAHAMS UPSY

	CE	BW	WW	YW	MA	CM	SC	DC	CW	RE	YG	MS	SMI
EPDs	1	4.9	44	85	29	2	15	23	14	0.43	-0.11	-0.16	38
ACC.	31	43	37	30	36	29	18	P	46	43	43	41	-

Bred to Sasquatch; due 1.07.09.

Here is a mature Limousin brood cow that has earned her keep at P Bar S Ranch. She has earned an 85 for yearling weight, 29 for milking ability and .43 for ribeye. It is these kind of producing Limousin females that have helped to create the core base at P Bar S.

PBRs Ready For This 592R

Lot 85

PB Limousin (100/89.3) Heifer 11.06.05 Double Polled PBRs 592R Black NPF 1838480

RLAY RULER 13N GPF BLAQUE RULON BLACK DIAMOND
MISS NATRONA 10D QUAIL RUN RAMONA BP
LKCCTOMAHAWKS TOUCHDOWN
HONY POLLED QUEEN 903X

PBRs DAKOTA 0241 PBRs BLACK DAKOTA 001 EXLR DAKOTA 353G
MAGS JUNGLE BOOK TRAK GLORY
CHAZ FIRST CHOICE 6004F
MAGS EASTER RIBBONS

CE	BW	WW	YW	MA	CM	SC	DC	CW	RE	YG	MS	\$MI
EPDs 4	1.8	44	79	18	2	0.3	-	16	0.48	-0.09	-0.10	40
ACC. 13	30	23	11	10	11	08	-	P	P	P	P	-

Bred to Sasquatch; due 11.13.08.

Sired by the senior herd sire at P Bar S, RLAY Ruler is 592R. She is from a daughter of PBRs Black Dakota that goes back to MAGS Jungle Book. This female is easy in her condition and one of the solid producer from the foundation herd at P Bar S.

PBRs Electric Dreams 0383

Lot 87

PB Limousin (100/90.9) Heifer 5.14.03 Double Polled PBRs 383N Black NPF 1725992

MDRC TUBB LUCKY STRIKE TUBB GRINDER 749D MASTER BRUN YANKEE 225X
EXLR 120J MONDEAUX MISS 749T
EXLR POLLED RESOLVE 175G
EXLR MAGIC 265E

MAGS LEXI KRMC OUTCROSS 192G LVLS POLLED BLACK JACK
MAGS ELECTRIC DREAMS HOLIJO 103
TYRE DEAN 17B
MAGS YOUNG MADONNA

CE	BW	WW	YW	MA	CM	SC	DC	CW	RE	YG	MS	\$MI
EPDs 5	3.1	35	66	23	5	0.2	-1	16	0.11	0.00	-0.03	39
ACC. 26	39	33	20	29	24	15	P	P	P	P	P	-

0383 is a black and double polled daughter of TUBB Lucky Strike that is from a daughter of KRMC Outcross. This top producer has done a tremendous job in production siring calves that wean big and are easy to sell. Buy with confidence, only the good ones stick around at P Bar S.

LOT 87A - Heifer, calved 9.15.08, double polled, double black, PBRs 887U. Sired by DVHO Trey.

PBRs Rockers Chick 575R

Lot 89

PB Limousin (100/90.9) Heifer 9.03.05 Double Polled PBRs 575R Red NPF 1833694

KRVN NASKAR 013N GPF BLAQUE RULON BLACK DIAMOND
WL JU JU GAL 149J QUAIL RUN RAMONA BP
COLE FIRST DOWN 46D
CHR GOSSIP GAL

PBRs JOSIE EXLR DAKOTA 353G WULF'S COUNT DOWN 9251C
MAGS FOLLOW YOUR HEART CANE RIDGE DAPHNE 011D
ROKR DROVER
MAGS DANCING FOR MONEY

CE	BW	WW	YW	MA	CM	SC	DC	CW	RE	YG	MS	\$MI
EPDs 7	2.0	37	73	22	4	0.9	5	15	0.60	-0.08	-0.12	37
ACC. 29	36	29	19	20	28	16	P	P	P	P	P	-

This red and double polled daughter of KRVN Naskar has a breed admirable look to her and is from the leading brood matron that also sells, PBRs Josie, a daughter of EXLR Dakota. This female is of the kind and quality that we know will keep us all in the Limousin business.

LOT 89A - Bull, calved 9.02.08, double polled, double black, PBRs 878U. Sired by Basin Franchise.

PBRs Sally

Lot 86

PB Limousin (100/88.9) Heifer 3.11.06 Double Polled PBRs 609S Double Black NPF 1855250

EF MAIN STAY 541M AUTO BLACK DAKOTA 129J EXLR DAKOTA 353G
EXLR 231J DFLC JET SET BPC 34Y
WULFS GUARDIAN 5074G
EXLR LUVLY 081F

PBRs PUREECHO 0303 KRMC OUTCROSS 192G LVLS POLLED BLACK JACK
GLORYS RAMBLER HOLIJO 103
WULFS RAMBLER 8400X
TRAK GLORY

CE	BW	WW	YW	MA	CM	SC	DC	CW	RE	YG	MS	\$MI
EPDs 5	3.0	41	81	21	5	-0.1	9	0	0.16	0.00	-0.01	42
ACC. 20	34	28	24	14	19	16	P	P	P	P	P	-

Bred to Sasquatch; due 11.02.08.

Sally is a black and double polled daughter of the once reserve national champion sire EF Main Stay and from a daughter of the once syndicated sire KRMC Outcross. She is one you will like for combination of muscle and rib shape. The Main Stay daughters are just now in production and they are ones that have done quite well in production.

PBRs Night Vision 552R

Lot 88

PB Limousin (100/88.4) Heifer 4.20.05 Double Polled PBRs 552R Red NPF 1822597

KRVN NASKAR 013N GPF BLAQUE RULON BLACK DIAMOND
WL JU JU GAL 149J QUAIL RUN RAMONA BP
COLE FIRST DOWN 46D
CHR GOSSIP GAL

MAGS NIGHTFALL MAGS JUMANJI KRMC BLACK LEGACY 917B
MAGS BLACK & SATIN
MAGS GO IN STYLE COLE FIRST DOWN 46D
WULF'S MANDARIN 1121A

CE	BW	WW	YW	MA	CM	SC	DC	CW	RE	YG	MS	\$MI
EPDs 10	-0.4	27	60	17	4	1.0	9	11	0.24	0.06	0.06	40
ACC. 27	35	30	24	19	24	15	P	P	P	P	P	-

Bred to Sasquatch; due 10.25.08.

KRVN Naskar back to MAGS Jumanji created quite a female in 552R. She is red, double polled and when in lactation forms a beautiful, well shaped udder. We love the moderation of frame and the design of this female.

EXLR Glenda 203P

Lot 90

PB Limousin (100/89.1) Heifer 9.07.04 Double Polled EXLR 203P Black NPF 1785415

COLE MAELSTROM 38M COLE FIRST DOWN 46D LKCC TOMAHAWKS TOUCHDOWN
COLE 92G 2 155P
COLE 84C
COLE 129X

EXLR GLENDA 7295M EXLR LIMITED EDITION 765J EXLR POLLED BENCHMARK709G
EXLR GLENDA 083J WULFS GLENDA 7021G
WULFS GUARDIAN 5074G
WULFS GLENDA 7021G

CE	BW	WW	YW	MA	CM	SC	DC	CW	RE	YG	MS	\$MI
EPDs 11	-0.6	28	64	12	7	0.5	21	3	0.25	-0.04	-0.10	35
ACC. 28	33	25	17	26	25	16	P	P	P	P	P	-

Bred to Sasquatch; due 11.04.08.

Glenda is a black and double polled daughter of COLE Maelstrom 38M and from a daughter of EXLR Limited Edition. This female has been a solid producer at P Bar S and we feel strongly that she will continue her producing excellence for the new owner.

MAGS Mirage

Lot 91

PB Limousin (100/89.7) Heifer 4.03.02 MAGS 752
NPF 1694378 Double Polled Red

WULF'S COUNT DOWN 9251C LKCC TOMAHAWKS TOUCHDOWN
EXLR DAKOTA 353G MISS WOLFETTE 9051X
CANE RIDGE DAPHNE 011D WULF'S RAMBLER 8400X
YKCC MISS IRONSIDE 110NS

TUBB GRINDER 749D MASTER BRUN YANKEE 225X
AUTO NATASHA 273G MONDEAUX MISS 749T
MISS WOLFETTE 9051X POLLED PACK LEADER 1182U
MISS WOLFETTE 4059S

CE	BW	WW	YW	MA	CM	SC	DC	CW	RE	YG	MS	SMI
EPDs 4	3.2	36	69	17	8	0.5	3	-2	0.16	-0.08	-0.11	37
ACC. 33	32	29	25	34	31	20	P	27	27	27	27	-



Reference - MAGS Sasquatch

Black & homozygous polled son of EXLR New Generation

Bred to Basin Franchise; due 10.22.08.

This female stems from a cow family that has been very successful over the years. This red and double polled female is a known daughter of AUTO Natasha 273G, a daughter of TUBB Grinder from the big milk numbered Miss Wolfette 9051X. Natasha is now the leading donor for Freed Livestock and has been responsible for producing some great ones. This daughter of hers is a prime example and she is sired by EXLR Dakota.

One of the past senior herd sires at P Bar S was EXLR Gaucho. He was a son of Wulf's Guardian from the ever popular EXLR Alliance 337G. The Guacho bull has left his mark at P Bar S in a very good way and when you see these 4 daughters of his you will know what I am talking about. They are of the right kind and makeup and have done a nice job in the past in production with their resulting calves.

PBRs Janeen 463P

Lot 92

PB Limousin (100/91.5) Heifer 8.28.04 PBRs 463P
NPF 1808552 Double Polled Double Black

WULFS GUARDIAN 5074G WULFS RAMBLER 8400X
EXLR GAUCHO 362K WULFS EXAMPLE 5074E
EXLR ALLIANCE 337G WULF'S COUNT DOWN 9251C
PMD B ALLIANCE

KRMC OUTCROSS 192G LVLS POLLED BLACK JACK
PBRs BENJI 0105 HOLJO 103
MAGS JANEEN COLE FIRST DOWN 46D
MAGS BENJI

CE	BW	WW	YW	MA	CM	SC	DC	CW	RE	YG	MS	SMI
EPDs 6	1.4	43	83	23	4	0.1	11	20	0.43	-0.04	-0.04	42
ACC. 17	31	23	14	13	16	12	P	P	P	P	P	-

LOT 92A - Heifer, calved 9.06.08, double polled, double black, PBRs 879U. Sired by Deuce.

PBRs Benji 0378

Lot 94

PB Limousin (100/91.1) Heifer 5.07.03 PBRs 378R
NPF 1725986 Double Polled Double Black

WULFS GUARDIAN 5074G WULFS RAMBLER 8400X
EXLR GAUCHO 362K WULFS EXAMPLE 5074E
EXLR ALLIANCE 337G WULF'S COUNT DOWN 9251C
PMD B ALLIANCE

MAGS JUMANJI KRMC BLACK LEGACY 917B
PBRs BENJI 0131 MAGS BLACK & SATIN
MAGS JUST FOR ME COLE FIRST DOWN 46D
MAGS BENJI

CE	BW	WW	YW	MA	CM	SC	DC	CW	RE	YG	MS	SMI
EPDs 7	1.2	42	81	28	3	0.4	14	18	0.30	0.00	0.03	44
ACC. 25	37	29	14	26	23	12	P	P	P	P	P	-

LOT 94A - Bull, calved 9.13.08, double polled, double black, PBRs 883U. Sired by Picante.

PBRs Maiden 440P

Lot 93

PB Limousin (100/93.1) Heifer 5.05.04 PBRs 440P
NPF 1778143 Double Polled Red

WULFS GUARDIAN 5074G WULFS RAMBLER 8400X
EXLR GAUCHO 362K WULFS EXAMPLE 5074E
EXLR ALLIANCE 337G WULF'S COUNT DOWN 9251C
PMD B ALLIANCE

EXLR DAKOTA 353G WULF'S COUNT DOWN 9251C
PBRs MEGAN'S MAIDEN CANE RIDGE DAPHNE 011D
JCL MEGAN SY BONANZA
JCL MOLLY

CE	BW	WW	YW	MA	CM	SC	DC	CW	RE	YG	MS	SMI
EPDs 5	2.1	43	77	22	5	0.2	12	15	0.48	-0.10	-0.13	39
ACC. 26	34	27	16	20	24	13	P	P	P	P	P	-

Bred to Sasquach; due 11.13.08.

PBRs Rudy 538R

Lot 95

PB Limousin (100/90.8) Heifer 3.26.05 PBRs 538R
NPF 1822588 Homozygous Polled Red

WULFS GUARDIAN 5074G WULFS RAMBLER 8400X
EXLR GAUCHO 362K WULFS EXAMPLE 5074E
EXLR ALLIANCE 337G WULF'S COUNT DOWN 9251C
PMD B ALLIANCE

EXLR DAKOTA 353G WULF'S COUNT DOWN 9251C
MAGS MIRAGE CANE RIDGE DAPHNE 011D
AUTO NATASHA 273G TUBB GRINDER 749D
MISS WOLFETTE 9051X

CE	BW	WW	YW	MA	CM	SC	DC	CW	RE	YG	MS	SMI
EPDs 6	1.8	35	70	19	6	0.2	13	8	0.39	-0.12	-0.13	37
ACC. 26	32	26	21	14	24	13	P	P	P	P	P	-

LOT 95A - Heifer, calved 9.19.08, homozygous polled, red, PBRs 84100U. Sired by Sasquatch.



FALL Yearling Heifers

Lot 96 - PBRs Tina 457T

PBRs Tina 457T

Lot 96

PB Limousin (50/46.4) Heifer 9.12.07 PBRs 457T
NPF 1896772 Homozygous Polled Double Black

JCL LODESTAR 27L HUNTS HI-LITER 245G
PBRs BIG LODE 507R LOGAN'S CHEERLEADER 280G
EXLR JULIE 617L EXLR POLLED BENCHMARK 709G
EXLR 620G

B T ULTRAVOX 297E OSU 6T6 ULTRA
BT BLACKBIRD 575M FINKS VIXON 788
OCC BLACKBIRD 999F OCC BONANZA 880B
OCC BLACKBIRD 914C

CE	BW	WW	YW	MA	CM	SC	DC	CW	RE	YG	MS	SMI
EPDs 11	-0.7	51	101	24	4	0.3	-	28	0.09	0.15	0.15	50
ACC. 12	25	21	12	11	11	05	-	P	P	P	P	-

Tina is a 50% Limflex daughter of PBRs Big Lode 507R, a son of JCL Lodestar 27L from EXLR Julie 617L. This young heifer is black, homozygous polled and from a pure-bred Angus cow. She is made as near perfect as you would ever want to make one and has a great set of epd's to back it all up. She has a -0.7 for birth, 101 for yearling weight, 24 for milk and marbling of .15. She also has a breed leading MTI number of 50.

PBRs Tulsa Time 777T

Lot 97

Lim-Flex (75/67.3) Heifer 10.08.07 PBRs 777T
LFF 1904754 Homozygous Polled Homozygous Black

LVLS SECRET WEAPON 4408K LVLS FARMER 4G
AUTO DOLLAR GENERAL 122R LVLS 408H
AUTO KYRIA 232K AUTO HACKETT 702H
WULFS HAPPINESS 8136H

GPFf BLAQUE RULON BLACK DIAMOND
SCC NETTIE 830N QUAIL RUN RAMONA BP
FOUNDATION COW

CE	BW	WW	YW	MA	CM	SC	DC	CW	RE	YG	MS	SMI
EPDs 7	-0.3	48	85	25	2	0.5	9	25	0.44	0.03	0.09	47
ACC. P	P	P	P	P	P	P	P	P	P	P	P	-

Tulsa Time is homozygous polled, homozygous black and represents the best of the best in her pedigree. She is a 75% Limflex heifer sired by the popular AUTO Dollar General 122R and from a daughter of GPFf Blaque Rulon. This young heifer is not only homozygous both ways but she also has a 25 for milk, 84 for yearling weight, .44 for ribeye and still maintains a .09 for marbling.

PBRs Trifecta 706T

Lot 98

Lim-Flex (75/66.8) Heifer 9.13.07 PBRs 760T
LFF 1906873 Homozygous Polled Homozygous

JCL LODESTAR 27L HUNTS HI-LITER 245G
MAGS REMOTE LOGAN'S CHEERLEADER 280G
MAGS 13M MAGS JUMANJI
WK QUEEN LASSIE 0332

CARROUSELS JIGSAW WULFS QUARTERBACK 4222B
BLACK CHERRY ELOR BLACK LACE 2266B
PCC 917J CHAZ FIRST CHOICE 6004F
FOUNDATION COW

CE	BW	WW	YW	MA	CM	SC	DC	CW	RE	YG	MS	SMI
EPDs 8	1.1	47	85	21	4	0.5	-	-	-	-	-	-
ACC. P	P	P	P	P	P	P	-	-	-	-	-	-

Here is a 75% Limflex daughter of MAGS Remote that just happens to be homozygous polled and homozygous black. She offers a 21 for milking ability, 85 for yearling weight and still has a low birth of 1.1.



**Lot 100 -
PBRs Tapioca 779T**

PBRs Tulip 775T *Lot 99*

PB Limousin (100/89.4) Heifer 10.07.07 PBRs 775T
NPF 1903210 Double Polled Red

LVLS FARMER 4G COLE FIRST DOWN 46D
LVLS SECRET WEAPON 4408K LVLS JENI 601V
LVLS 408H LVLS POLLED JUSTICE 0601E
LVLS MISS STABILIZER 1408E

MAGS LEONA WULFS GAGE 5158G WULFS ENDURANCE 3097E
MAGS CAFFEINE FREE WULFS EMBER 5158E
PLL POLLED WEBSTER 30X
MK UPSY IN COMMAND

	CE	BW	WW	YW	MA	CM	SC	DC	CW	RE	YG	MS	SMI
EPDs	3	4.3	56	102	36	7	0.5	19	25	0.24	-0.01	0.02	48
ACC.	21	34	29	20	19	20	17	P	P	P	P	P	-

775T is a red and double polled daughter of the big numbered LVLS Secret Weapon. She has one of the highest milk numbers of any female in the sale with a 36. She also has a 102 for yearling weight and a 48 for MTI.

PBRs Tapioca 779T *Lot 100*

PB Limousin (100/91.1) Heifer 10.12.07 PBRs 779T
NPF 1903212 Double Polled Black

JCL LODESTAR 27L HUNTS HI-LITER 245G
KRVN PICANTE 036P LOGAN'S CHEERLEADER 280G
CHR KOKO EXLR HERITAGE 056H
BLACK MOLLY KDPI 62F

EXLR DAKOTA 353G WULF'S COUNT DOWN 9251C
PBRs JOSIE CANE RIDGE DAPHNE 011D
MAGS FOLLOW YOUR HEART ROKR DROVER
MAGS DANCING FOR MONEY

	CE	BW	WW	YW	MA	CM	SC	DC	CW	RE	YG	MS	SMI
EPDs	5	3.9	53	95	21	4	0.7	4	18	0.29	-0.07	-0.04	45
ACC.	18	34	28	17	12	17	14	P	P	P	P	P	-

You will really like the style and profile of this young black and polled daughter of KRVN Picante 036P. She is from a daughter of EXLR Dakota and has come out into a very nice package for you to approve on sale day.

PBRs Tapioca 799T *Lot 101*

PB Limousin (100/8.8) Heifer 11.21.07 PBRs 799T
NPF 1906183 Polled Red

GPFF BLAQUE RULON BLACK DIAMOND
RLAY RULER 13N QUAIL RUN RAMONA BP
MISS NATRONA 10D LKCC TOMAHAWKS TOUCHDOWN
HONY POLLED QUEEN 903X

EXLR DAKOTA 353G WULF'S COUNT DOWN 9251C
EXLR SAMIE 621L CANE RIDGE DAPHNE 011D
LKCC SMITH CATTLE 110C LKCC BLACK LOTO 1079W
SMITH CATTLE 646R

	CE	BW	WW	YW	MA	CM	SC	DC	CW	RE	YG	MS	SMI
EPDs	5	3.9	48	73	19	0	0.5	-	11	0.48	-0.09	-0.10	41
ACC.	P	P+	P	P	P	P	P	P	P	P	P	P	-

Here is a nice red and polled daughter of RLAY Ruler, a son of GPFF Blaque Rulon from a daughter of EXLR Dakota. This heifer is packed full of muscle and plenty of thickness and is from a daughter of EXLR Dakota.





**Lot 104 -
PBRS Tiffany 774T**

PBRS Top Star 766T Lot 102

PB Limousin (100/87.3) Heifer 5.05.04 PBRS 766T
NPF 1906172 Homozygous Polled Double Black

RLAY RULER 13N GPF BLAQUE RULON BLACK DIAMOND
MISS NATRONA 10D QUAIL RUN RAMONA BP
LKCC TOMAHAWKS TOUCHDOWN
HONY POLLED QUEEN 903X

COLE 57N ANDERS JAG GREENWOODPOLLED455ROCKET
ANDERS GEMINI
COLE FIRST DOWN 46D
COLE 69Y

	CE	BW	WW	YW	MA	CM	SC	DC	CW	RE	YG	MS	SMI
EPDs	7	1.0	35	72	15	2	0.3	-	21	0.48	-0.02	-0.05	39
ACC.	P	P+	P	P	P	P	P	-	P	P	P	P	-

Homozygous polled and double black this is this daughter of RLAY Ruler and from the famed PBRS donor, COLE 57N. This young heifer is very complete made and much appreciated with a nice pattern.

PBRS Trend Setter 770T Lot 103

PB Limousin (100/90.3) Heifer 9.27.07 PBRS 770T
NPF 1903207 Double Polled Black

KRVN PICANTE 036P JCL LODESTAR 27L HUNTS HI-LITER 245G
CHR KOKO LOGAN'S CHEERLEADER 280G
EXLR HERITAGE 056H
BLACK MOLLY KDPI 62F

MAGS NIBBLER 188N MAGS LITTLE BROTHER EXLR DAKOTA 353G
MAGS 33X 170L DJ ESSENCE
DVFC COOKIE MONSTER 108H
WLCC 33X

	CE	BW	WW	YW	MA	CM	SC	DC	CW	RE	YG	MS	SMI
EPDs	4	3.0	49	87	21	4	0.3	12	25	0.23	0.00	0.02	45
ACC.	14	32	26	15	11	13	13	P	P	P	P	P	-

This KRVN Picante daughter is from a MAGS Little Brother daughter. She is black, double polled and one really nice young heifer that will make a nice replacement.

PBRS Tiffany 774T Lot 104

PB Limousin (100/91.4) Heifer 10.06.07 PBRS 774T
NPF 1903209 Homozygous Polled Red

CARROUSELS PEAK POWER GPF BLAQUE RULON BLACK DIAMOND
HC CHERISH QUAIL RUN RAMONA BP
HC POLLED MANHATTAN
HACO MISTY MORNING

MAGS KLAIM CHECK EXLR DAKOTA 353G WULF'S COUNT DOWN 9251C
MAGS FOLLOW YOUR HEART CANE RIDGE DAPHNE 011D
ROKR DROVER
MAGS DANCING FOR MONEY

	CE	BW	WW	YW	MA	CM	SC	DC	CW	RE	YG	MS	SMI
EPDs	3	3.6	40	72	18	2	0.9	8	16	0.79	-0.27	-0.14	39
ACC.	18	34	29	18	13	17	15	P	P	P	P	P	-

Here is a real fancy, show heifer type female sired by Carrousel's Peak Power. She is from a daughter of EXLR Dakota and is red and double polled. This young heifer is very clean up through her front end and strong in her stance.

Proof of Progress

Limousin Sale

Overlook Drive ■ Watch for P BAR S Ranch Sign

P BAR S Headquarters

Store ■

Shell Creek Rd.

Casino ■

6.5 miles North

81 W. Ave.

Gilcrease Road

Hampton Inn ■

Holiday Inn ■

Hwy. 64 & 412 W.

Exit 129 W. Ave.

Best Western ■

Tulsa →

Approximately 10 miles West

Directions:

From Tulsa, OK - Take Hwy. 64 - 412 West to Sand Springs Exit at 129 W. Ave. and follow map.

From Oklahoma City, OK - Turnpike I-44 to Sapulpa Exit, Hwy. 97; got North to Sand Springs; cross over Ark River Bridge and take Hwy. 6 & 412 West 1 mile to Exit 129 W. Ave. and follow map.



R&R
Marketing Company
3110 McMillan Road
Franklin, TN 37064-9373

FIRST CLASS MAIL
US Postage
PAID
Montezuma, Iowa
Permit No. 30

designs by
arin
www.designsbyarin.com