



Sunday, October 4, 2009 • 1:00 PM  
at the Ranch, Sand Springs, Oklahoma

# Proof

Sunday, October 4, 2009 • 1:00 PM  
at the Ranch • Sand Springs, Oklahoma

# of Progress II

## Limousin Sale

**Selling 116  
Head of Limousin  
& LimFlex cattle**

*Pairs - Breds - Open Heifers - Bulls*

### Sale Consultants:

**American Cattle Services, Inc.**  
Ken Holloway, 580.581.7652  
[acs@americancattleservices.com](mailto:acs@americancattleservices.com)  
[www.americancattleservices.com](http://www.americancattleservices.com)



Mark Smith  
phone/fax: 515.965.1458  
mobile: 515.229.5227



### Sale Management:

**R&R  
Marketing  
Company**

**Randy Ratliff**  
615.791.8982 • Fax: 615.791.8983  
cell: 615.330.2735  
3610 Bear Creek Lane  
Thompson's Station, TN 37179  
[Sales@RRMktg.com](mailto:Sales@RRMktg.com) • [www.RRMktg.com](http://www.RRMktg.com)



(L#2845)

### Schedule:

#### Saturday, October 3rd

Noon Cattle Available for viewing  
5:00 pm Refreshments & complementary supper  
6:00 pm Continued refreshments & live entertainment

#### Sunday, October 4th

8:00 am Coffee & pastries & viewing of cattle  
11:00 am Complementary lunch  
1:00 pm **Proof of Progress Sale**

### Auctioneers:

Sonny Booth

### Sale Day Phones:

Randy Ratliff, 615.330.2735  
Bob Getz, 918.346.2437  
Mark Smith, 515.229.5227  
Ken Holloway, 580.581.7652

### Hotel Accommodations:

Best Western, 918.245.4999  
81st W. Ave. Exit  
Hampton Inn, 918.245.8500  
81st W. Ave. Exit  
Holiday Express, 918.585.7000  
Gilcrease Museum Road

# PBARS RANCH

**Paul Sisemore**, owner  
802 Overlook Drive  
Sand Springs, OK 74063  
918.241.7257  
[www.pbars.net](http://www.pbars.net)  
[psisemore@custofab.com](mailto:psisemore@custofab.com)  
Ranch Manager, Bob Getz  
918.346.2437



**R&R  
Marketing  
Company**

**Randy Ratliff**  
615.791.8982 • Fax: 615.791.8983  
cell: 615.330.2735  
3610 Bear Creek Lane  
Thompson's Station, TN 37179  
*Sales@RRMktg.com • www.RRMktg.com*



(L#2845)



**Paul Sisemore**, owner  
802 Overlook Drive  
Sand Springs, OK 74063  
918.241.7257 • *www.pbars.net*  
*psisemore@custofab.com*  
Ranch Manager, Bob Getz 918.346.2437

Dear Limousin Enthusiasts,

It is an honor to be working closely with P Bar S Ranch on their 2nd annual Limousin production sale. Owner Paul Sisemore and his ranch manager Bob Getz along with Elgin Elmore have assembled what promises to be their very best ever. The P Bar S Ranch started in 1993 and is now one of the leading purebred and Limflex herds in America. The P Bar S herd was built on a solid foundation of big numbered and predictable lines of cattle. Over the years they have realized that is all about cow families, strong epd's and that overpowering and prominent look.



The entire sale offering carry and proudly represent the PBRS prefix! The cattle are sold fully guaranteed and rest assured if they won't work for PBRS then they are not in the sale. These PBRS cattle are strong in all traits and bred to some of the best bulls that resources could buy. All pedigree's are from the strongest lineage and most predictable cow families that P Bar S has to offer.

We urge you to come early on Saturday afternoon and view the sale offering and then enjoy a great meal and live entertainment to follow. You will be greeted at the gate with a firm handshake, a big smile and more hospitality then you can imagine. You will be stepping into one of the most well kept and beautiful Ranches in Oklahoma.

If we can be of any assistance we would love to take your call and talk about this great sale offering from the heart of the P Bar S Ranch.

Sincerely yours,

Randy Ratliff  
R & R Marketing Company

Dear Friends,

Welcome to our Second Proof of Progress Sale at the P-Bar-S, the "Little Ranch with Big Genetics." Your presence is always a pleasure and honor for us at the ranch.

Once again, we will be offering only our very best for your consideration. Whether it is Lim-Flex, Purebred, red or black, I think you will find cattle that will fit your needs.

We have tried to incorporate the best genetics on both the sires and dams side. We certainly believe in EPD's and incorporate them in our mating decisions, but at the same time we sure like our cattle pleasing to the eye.

If there is anything at all that we can assist you with or anything that we can do to make your visit to the ranch more enjoyable, please do not hesitate to let us know.

Paul Sisemore  
Bob Getz



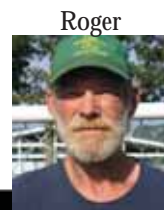
Bob Getz



Paul Sisemore



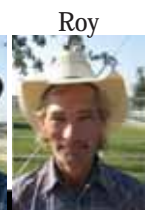
Elgin Elmore



Roger



Slim



Roy



**SAV  
NET WORTH  
& WLR  
RENDEVOUS 050R**



Reference dam, WLR RENDEZVOUS 050R



**LOT 1 -  
PBRS Ur So Fine 8142U**



**LOT 2 -  
PBRS U Totally Rock 8151U**

**PICK OF THE FLUSH**

**PBRS Ur So Fine 8142U**

*Lot 1*

Lim-Flex (50/45.3) Cow 11.16.08 PBRS 8142U  
LFF 1934831 Double Polled Double Black

S A V 8180 TRAVELER 004 SITZ TRAVELER 8180  
**S A V NET WORTH 4200** BOYD FOREVER LADY 8003  
S A V MAY 2410 SAF 598 BANDO 5175  
GPF BLAQUE RULON S A V MAY 6269  
**WLR RENDEZVOUS 050R** BLACK DIAMOND  
KEHG JULIET 10H QUAIL RUN RAMONA BP  
WULFS RAMBLER 8400X  
TLTL POLLED PEACHES 007B

CE	BW	WW	YW	MA	CM	SC	DC	CW	RE	YG	MS	\$MI
EPDs 7	0.7	52	103	32	2	-	-	18	0.06	0.10	0.05	47
P	P+	P+	P	P	P	-	-	P	P	P	P	-

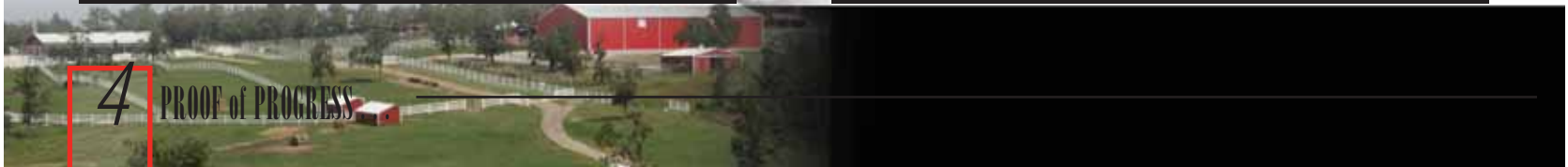
**PBRS U Totally Rock 8151U**

*Lot 2*

Lim-Flex (50/45.3) Cow 11.18.08 PBRS 8151U  
LFF 1934836 Homozygous Polled Homozygous Black

S A V 8180 TRAVELER 004 SITZ TRAVELER 8180  
**S A V NET WORTH 4200** BOYD FOREVER LADY 8003  
S A V MAY 2410 SAF 598 BANDO 5175  
GPF BLAQUE RULON S A V MAY 6269  
**WLR RENDEZVOUS 050R** BLACK DIAMOND  
KEHG JULIET 10H QUAIL RUN RAMONA BP  
WULFS RAMBLER 8400X  
TLTL POLLED PEACHES 007B

CE	BW	WW	YW	MA	CM	SC	DC	CW	RE	YG	MS	\$MI
EPDs 7	0.2	58	103	32	2	-	-	18	0.06	0.10	0.05	48
P	P+	P+	P	P	P	-	-	P	P	P	P	-



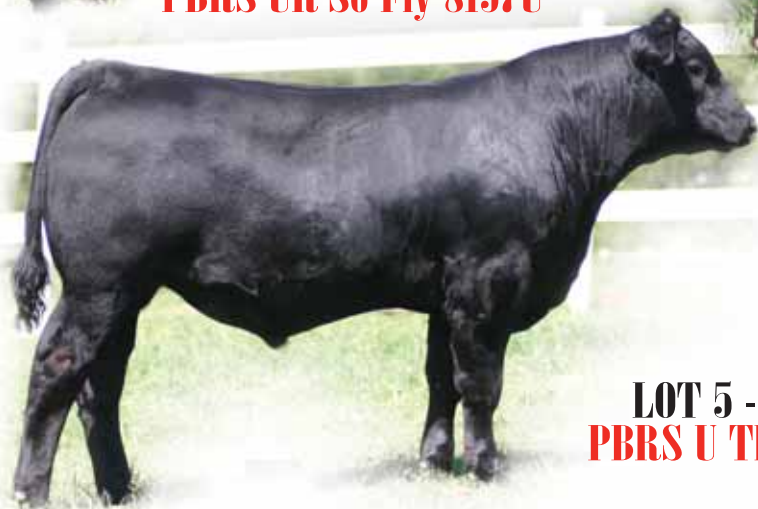
**4** PROOF OF PROGRESS



**LOT 3 -  
PBRs UR So Fly 8157U**



**LOT 4 -  
PBRs UR Addicting 8160U**



**LOT 5 -  
PBRs U The Man 8154U**

**PBRs Ur So Fly 8157U**

**Lot 3**

Lim-Flex (50/45.3) Cow 11.22.08 PBRs 8157U  
LFF 1934842 Homozygous Polled Double Black

S A V 8180 TRAVELER 004 SITZ TRAVELER 8180  
**S A V NET WORTH 4200** BOYD FOREVER LADY 8003  
S A V MAY 2410 SAF 598 BANDO 5175  
S A V MAY 6269  
GPFf BLAQUE RULON BLACK DIAMOND  
**WLR RENDEZVOUS 050R** QUAIL RUN RAMONA BP  
KEHG JULIET 10H WULFS RAMBLER 8400X  
TLTL POLLED PEACHES 007B

CE	BW	WW	YW	MA	CM	SC	DC	CW	RE	YG	MS	SMI
EPDs 7	1.9	53	103	32	2	-	-	18	0.06	0.10	0.05	47
P	P+	P+	P	P	P	-	-	P	P	P	P	-

**PBRs UR Addicting 8160U**

**Lot 4**

Lim-Flex (50/45.3) Cow 11.22.08 PBRs 8160U  
LFF 1934844 Double Polled Homozygous Black

S A V 8180 TRAVELER 004 SITZ TRAVELER 8180  
**S A V NET WORTH 4200** BOYD FOREVER LADY 803  
S A V MAY 2410 SAF 598 BANDO 5175  
S A V MAY 6269  
GPFf BLAQUE RULON BLACK DIAMOND  
**WLR RENDEZVOUS 050R** QUAIL RUN RAMONA BP  
KEHG JULIET 10H WULFS RAMBLER 8400X  
TLTL POLLED PEACHES 007B

CE	BW	WW	YW	MA	CM	SC	DC	CW	RE	YG	MS	SMI
EPDs 7	1.3	56	103	32	2	-	-	18	0.06	0.10	0.05	48
P	P+	P+	P	P	P	-	-	P	P	P	P	-

**PBRs U The Man 8154U**

**Lot 5**

Lim-Flex (50/45.3) Bull 11.19.08 PBRs 8154U  
LFM 1934839 Homozygous Polled Homozygous Black

S A V 8180 TRAVELER 004 SITZ TRAVELER 8180  
**S A V NET WORTH 4200** BOYD FOREVER LADY 8003  
S A V MAY 2410 SAF 598 BANDO 5175  
S A V MAY 6269  
GPFf BLAQUE RULON BLACK DIAMOND  
**WLR RENDEZVOUS 050R** QUAIL RUN RAMONA BP  
KEHG JULIET 10H WULFS RAMBLER 8400X  
TLTL POLLED PEACHES 007B

CE	BW	WW	YW	MA	CM	SC	DC	CW	RE	YG	MS	SMI
EPDs 7	0.6	47	103	32	2	-	-	18	0.06	0.10	0.05	45
P	P+	P+	P	P	P	-	-	P	P	P	P	-

**LOT 1, 2, 3, & 4 - PICK OF THE FLUSH**

The results of this embryo flush are what most cattle breeders could only wish for! Every single animal in this flush are amazing! They are sired by the prominent Angus sire SAV Net Worth, a top son of SAV 8180 Traveler 004. Their dam is the many times show champion and all-star donor for PBRs, WLR Rendezvous 050R. She is a daughter of the many times national gold medal sire GPFf Blaque Rulon and from KEHG Juliet 10H. The epd number packages of this set of calves are off the charts and are some of the finest in the entire breed. They have a low birth of 0.7, yearling weight of 107 and milk of 32. Not only are their numbers amazing they also have the prominent conformation and profile needed to get any show judges attention. Buy with confidence and we wish you the best of luck on your selection.



# OPEN HEIFERS



**LOT 6 -**  
**PBRS Winning Edge 929W**



**LOT 7 -**  
**PBRS Wishful Thinking 920W**

## PBRS Winning Edge 929W

*Lot* **6**

PB Limousin (87/78.1) Cow  
NPF 1936906

03.02.09  
Double Polled

PBRS 929W  
Double Black

<b>DHVO TREY 133R</b>	GPF BLAQUE RULON AMY JO DHAN 20L	BLACK DIAMOND QUAIL RUN RAMONA BP BLACK CAT DHAN 152G GPF AMBER JO EXLR GUARDIAN 461K
<b>TYEJ DB SHANIA 426S</b>	EXLR INDEPENDENCE TYEJ SHANIA	EXLR 5170H MAGS KABOOM NBLF SHANIA 128L

	CE	BW	WW	YW	MA	CM	SC	DC	CW	RE	YG	MS	\$MI
EPDs	6	2.0	52	89	24	0	0.8	-	26	0.42	-0.01	0.01	46
	P	P+	P+	P	P	P	P	-	P	P	P	P	-

Here is a maternal sister to the top selling female in last year's sale, PBRS U Wish 819U. She sold to Express Ranches for \$30,000 and was one of the most talked about heifers to sell in all of 2008. Her dam TYEJ DB Shania 426S has done it again with this top heifer sired by DHVO Trey. If you want a big time show heifer then here she is! She is super clean through her front end, long and level down her top line and very eye appealing. This heifer stands on a lot of bone and is very big footed and we feel certain you are going to like her.

## PBRS Wishful Thinking 920W

*Lot* **7**

PB Limousin (100/89.7) Cow  
NPF 1936905

02.06.09  
Double Polled

PBRS 920W  
Black

<b>DHVO TREY 133R</b>	GPF BLAQUE RULON AMY JO DHAN 20L	BLACK DIAMOND QUAIL RUN RAMONA BP BLACK CAT DHAN 152G GPF AMBER JO COLE FIRST DOWN 46D
<b>PBRS HEART 0356</b>	COSC BREKENRIDGE MAGS KLARISSA	TUBB STORM BREKEN 299B EXLR DAKOTA 353G MAGS FOLLOW YOUR HEART

	CE	BW	WW	YW	MA	CM	SC	DC	CW	RE	YG	MS	\$MI
EPDs	3	4.5	47	89	19	1	0.8	-	-	-	-	-	-
	P	P+	P+	P	P	P	P	-	-	-	-	-	-

Talk about a great one! Here she is, PBRS Wishful Thinking 920W. She is a daughter of DHVO Trey 133R that has that great show look and prominent show profile. This heifer is a big league show heifer and is one that is certain to get in the winners circle.



**6** PROOF of PROGRESS

## PBRs Wish Me Luck 19W

Lot 8

Lim-Flex (50/44.5) Cow  
LFF 1934929

03.09.09  
Double Polled

PBRs 19W  
Double Black

**DHVO DEUCE 132R**  
GPFf BLAQUE RULON  
AMY JO DHAN 20L

**HOMEACRES QUEEN D71**  
HOMEACRES PLATINUM 723  
HOMEACRES QUEEN A19

BLACK DIAMOND  
QUAIL RUN RAMONA BP  
BLACK CAT DHAN 152G  
GPFf AMBER JO  
G D A R OSCAR 711  
HOMEACRES HANA 103  
C R TRAVELER 574  
HOMEACRES QUEEN J460

CE	BW	WW	YW	MA	CM	SC	DC	CW	RE	YG	MS	SMI
EPDs 7	-1.6	50	86	25	0	0.7	-	46	0.20	0.21	0.08	46
P	P+	P	P	P	P	P	-	P	P	P	P	-

We really like this double polled, double black 50% Limflex heifer. She is sired by the national champion DHVO Deuce 132R that has done such a great job in siring some of the finest progeny are breed has to offer.



Reference sire, **DHVO DEUCE 132R**

## PBRs Why Wait 944W

Lot 9

Lim-Flex (50/45.7) Cow  
LFF 1936365

04.06.09  
Homozygous Polled

PBRs 944W  
Double Black

**MAGS SCOTLAND**  
BR MIDLAND  
MAGS MARQUEE

**MAGS SPECKLES**  
TNUH BLUE PRINT 245H  
PRECISION PET 3 OF RWR

TWIN VALLEY PRECISIONE161  
BR ROYAL LASS 7036-19  
EXLR DAKOTA 353G  
MAGS JEWEL  
WADDLES COBALT 3106  
TNUH MISS C245  
GAR PRECISION 1680  
AMBUSHES AMBER 2 OF RWR

CE	BW	WW	YW	MA	CM	SC	DC	CW	RE	YG	MS	SMI
EPDs 5	0.4	44	85	21	0	0.3	-	28	0.01	0.20	0.32	53
P	P+	P	P	P	P	P	-	P	P	P	P	-

Here is a big numbered 50% Limflex heifer sired by the national champion Limflex sire MAGS Scotland. She is homozygous polled, double black and very much a top show prospect. She is from a 50% Limflex daughter of TNUH Blue Print and she has a 0.32 for marbling and a 53 for MTL. This heifer has the number package and the overall balance needed to get your attention.

## PBRs Whiskey Gal 59W

Lot 10

Lim-Flex (50/44.5) Cow  
LFF 1934930

03.07.09  
Double Polled

PBRs 59W  
Double Black

**DHVO DEUCE 132R**  
GPFf BLAQUE RULON  
AMY JO DHAN 20L

**BT SUSANNA 522R**  
HYLINE RIGHT WAY 781  
BT SUSANNA 511M

BLACK DIAMOND  
QUAIL RUN RAMONA BP  
BLACK CAT DHAN 152G  
GPFf AMBER JO  
HYLINE RIGHT TIME 338  
HYLINE ELLEN 86  
V A R NEW DESIGN 0313  
V A R SUSANNA 0019

CE	BW	WW	YW	MA	CM	SC	DC	CW	RE	YG	MS	SMI
EPDs 6	1.7	62	104	25	-1	0.7	10	42	0.14	0.24	0.17	53
P	P+	P	P	P	P	P	P	P	P	P	P	-

This 50% Limflex daughter of DHVO Deuce has a 0.17 for marbling, a 53 for MTL and strong 104 for yearling weight, 25 for milk and low birth of 1.7. She is sired by the national champion DHVO Deuce and is from a consistent producing Angus female that secures the Angus herd at P Bar S.

## PBRs Winners Circle 219W

Lot 11

Lim-Flex (50/44.5) Cow  
LFF 1934931

03.23.09  
Homozygous Polled

PBRs 219W  
Double Black

**DHVO TREY 133R**  
GPFf BLAQUE RULON  
AMY JO DHAN 20L

**SEDGWICKS ANNIE 8111**  
BON VIEW NEW DESIGN 1407  
SEDGWICKS ANNIE 8117

BLACK DIAMOND  
QUAIL RUN RAMONA BP  
BLACK CAT DHAN 152G  
GPFf AMBER JO  
B/R NEW DESIGN 036  
BON VIEW PRIDE 664  
W C C BANDO B88  
SEDGWICKS ANNIE 4561

CE	BW	WW	YW	MA	CM	SC	DC	CW	RE	YG	MS	SMI
EPDs 7	0.0	44	84	30	0	0.5	7	28	-0.08	0.23	0.32	53
P	P+	P	P	P	P	P	P	P	P	P	P	-

This female has it all! She has the look, the proven pedigree and the extreme number package. 219W has a 30 for milk, 0.32 for marbling and 53 for MTL. She is sired by the full brother to DHVO Deuce, DHVO Trey.

## PBRs Whitney 904W

Lot 12

Lim-Flex (62/55.6) Cow  
LFF 1936362

01.23.09  
Homozygous Polled

PBRs 904W  
Homozygous Black

**MAGS SCOTLAND**  
BR MIDLAND  
MAGS MARQUEE

**BLACK CHERRY**  
CARROUSELS JIGSAW  
PCC 917J

TWIN VALLEY PRECISIONE161  
BR ROYAL LASS 7036-19  
EXLR DAKOTA 353G  
MAGS JEWEL  
WULFS QUARTERBACK 4222B  
ELOR BLACK LACE 2266B  
CHAZ FIRST CHOICE 6004F  
FOUNDATION COW

CE	BW	WW	YW	MA	CM	SC	DC	CW	RE	YG	MS	SMI
EPDs 3	-0.1	44	81	20	2	0.2	-	-	-	-	-	-
P	P+	P	P	P	P	P	-	-	-	-	-	-

Homozygous polled, homozygous black and one of the really nice 62% Limflex heifers in the entire sale. She is sired by the national champion Limflex sire MAGS Scotland and from the Black Cherry cow. This female is very angular through her front end, strong topped and a brood cow look to her.



# MAGS NATASHA Cow Family

One of the lead donor cows for P Bar S Ranch is MAGS Natasha, a proven daughter of AUTO Black Dakota 129J and from MAGS Juliet, a daughter of CHAZ First Choice out of the national champion SLVL Sable Cookie. The genetics behind Natasha represent the very strongest and most proven of any ever created at Magness Land & Cattle Co. One of the lead show heifers at P Bar S is 906W, she is sired by MAGS Savage, the prominent son of GPFF Blaque Rulon that is doing such a great job in siring show progeny. She along with a select few other siblings make up the MAGS Natasha cow family in this sale. The lineage and the predictability found within this family is remarkable.



Reference Dam, MAGS NATASHA



## LOT 13 - PBRs Water Fall 906W



## LOT 14 - PBRs Taffy 737T

### PBRs Water Fall 906W

Lot 13

PB Limousin (100/88.5) Cow  
NPF 1936363

01.25.09  
Double Polled

PBRs 906W  
Double Black

MAGS SAVAGE  
GPFF BLAQUE RULON  
MAGS MANDA  
AUTO BLACK DAKOTA 129J  
MAGS NATASHA  
MAGS JULIET

BLACK DIAMOND  
QUAIL RUN RAMONA BP  
EXLR DAKOTA 353G  
MAGS JEWEL  
EXLR DAKOTA 353G  
DFLC JET SET BPC 34Y  
CHAZ FIRST CHOICE 6004F  
SLVL SABLE COOKIE 381E

CE	BW	WW	YW	MA	CM	SC	DC	CW	RE	YG	MS	\$MI
2	2.4	51	91	24	3	0.5	18	20	0.54	-0.02	-0.08	43
P	P	P	P	P	P	P	P	P	P	P	P	-

### PBRs Taffy 737T

Lot 14

PB Limousin (100/87.7) Cow  
NPF 1895840

04.15.07  
Double Polled

PBRs 737T  
Double Black

RLAY RULER 13N  
GPFF BLAQUE RULON  
MISS NATRONA 10D  
AUTO BLACK DAKOTA 129J  
MAGS NATASHA  
MAGS JULIET

BLACK DIAMOND  
QUAIL RUN RAMONA BP  
LKCC TOMAHAWKS TOUCHDOWN  
HONY POLLED QUEEN 903X  
EXLR DAKOTA 353G  
DFLC JET SET BPC 34Y  
CHAZ FIRST CHOICE 6004F  
SLVL SABLE COOKIE 381E

CE	BW	WW	YW	MA	CM	SC	DC	CW	RE	YG	MS	\$MI
6	1.0	46	85	21	3	0.2	-	17	0.50	-0.07	-0.20	37
14	34	28	20	12	13	10	-	P	P	P	P	-

A.I.'d 7.12.09 to Wulf's Titus. P.E. 7.14 - 8.19.09 to MAGS 2500T.

LOT 14A - PBRs Watchful Eyes 965W. PB Limousin (100/88.1) cow, double polled, double black, 05.06.09, PBRs 965W, NPF 1933822. Sired by MAGS Table Tennis. BWL 2.9; WW: 51; YW: 92; MA: 20; SC: 0.5; CW: 20; RE: 0.36; YG: 0.04; MS: -0.09; SMI: 42.



8 PROOF of PROGRESS





**LOT 16 -  
PBR8 831U**



**LOT 17 -  
PBR8 Untold Riches 866U**

**PBR8 Unity 827U**

**Lot 15**

Lim-Flex (75/66.4) Cow 03.24.08 PBR8 827U  
LFF 1925995 Double Polled Double Black

JCL LODESTAR 27L HUNTS HI-LITER 245G  
**LH RODEMASTER 338R** LOGAN'S CHEERLEADER 280G  
 VERMILION E BLACKBIRD9546 VERMILION 31STACLER 3491  
 CH ENV BLACKBIRD C5941  
 AUTO BLACK DAKOTA 129J EXLR DAKOTA 353G  
**MAGS NATASHA** DFLC JET SET BPC 34Y  
 MAGS JULIET CHAZ FIRST CHOICE 6004F  
 SLVL SABLE COOKIE 381E

CE	BW	WW	YW	MA	CM	SC	DC	CW	RE	YG	MS	\$MI
EPDs 6	2.5	61	117	25	6	0.5	-	48	0.14	0.26	0.06	49
P	P	P	P	P	P	P	-	P	P	P	P	-

A.I 5.14.09 to MAGS Solomon. P.E. 6.13 - 8.19.09 to PBR8 418U.

**PBR8 Uma 831U**

**Lot 16**

Lim-Flex (75/66.4) Cow 04.01.08 PBR8 831U  
LFF 1918560 Double Polled Homozygous Black

JCL LODESTAR 27L HUNTS HI-LITER 245G  
**LH RODEMASTER 338R** LOGAN'S CHEERLEADER 280G  
 VERMILION E BLACKBIRD9546 VERMILION 31STACLER 3491  
 CH ENV BLACKBIRD C5941  
 AUTO BLACK DAKOTA 129J EXLR DAKOTA 353G  
**MAGS NATASHA** DFLC JET SET BPC 34Y  
 MAGS JULIET CHAZ FIRST CHOICE 6004F  
 SLVL SABLE COOKIE 381E

CE	BW	WW	YW	MA	CM	SC	DC	CW	RE	YG	MS	\$MI
EPDs 6	3.0	66	124	25	6	0.5	-	48	0.14	0.26	0.06	50
P	34	29	16	13	P	13	-	P	P	P	P	-

A.I. 7.07 to MAGS Unloosen. P.E. 7.10 - 8.19.09 to MAGS Unmasked Man 4613U.

**PBR8 Untold Riches 866U**

**Lot 17**

PB Limousin (100/88.4) Cow 05.21.08 PBR8 866U  
NPF 1909349 Double Polled Homozygous Black

GPFF BLAQUE RULON BLACK DIAMOND  
**RLAY RULER 13N** QUAIL RUN RAMONA BP  
 MISS NATRONA 10D LKCC TOMAHAWKS TOUCHDOWN  
 HONY POLLED QUEEN 903X  
 KRVN NASKAR 013N GPFF BLAQUE RULON  
**MGPS RAVEN 556R** WL JU JU GAL 149J  
 MAGS NATASHA AUTO BLACK DAKOTA 129J  
 MAGS JULIET

CE	BW	WW	YW	MA	CM	SC	DC	CW	RE	YG	MS	\$MI
EPDs 7	0.0	41	78	17	3	0.4	-	15	0.60	-0.08	-0.21	35
13	27	19	11	10	12	P	-	P	P	P	P	-

P.E. 7.14 - 8.19.09 to MAGS Tobacco 1555T.

**MAGS**  
**NADINE 110N**  
 Cow Family

MAGS Nadine 110N is a daughter of DJ Gentleman In Black from the big number MAGS Lady Ace. 110N continues to make her positive mark at P Bar S and we are positive you will agree when you see what she has done. A highlight of the sale is her daughter sired by DHVO Ace, a full brother to Deuce and Trey. This heifer is raw boned, super thick made with a ton of style and balance. She along with her other half siblings make up this MAGS Nadine 110N cow family.



**LOT 18 -**  
**PBRS Unforgiven 885U**



**LOT 19 -**  
**PBRS Wishful 911W**

**PBRS Unforgiven 885U** Lot 18

PB Limousin (100/90.0) Cow 09.15.08 PBRS 885U  
 NPF 1928734 Double Polled Homozygous Black

<b>DHVO ACE 128R</b>	GPF BLAQUE RULON	BLACK DIAMOND
	AMY JO DHAN 20L	QUAIL RUN RAMONA BP
		BLACK CAT DHAN 152G
		GPF AMBER JO
<b>MAGS NADINE 110N</b>	DJ GENTLEMAN IN BLACK	COLE FIRST DOWN 46D
	MAGS LADY ACE	DJ ESSENCE
		EXLR INTRIGUE 361G
		CHAZ MISS GRETA 7003G

	CE	BW	WW	YW	MA	CM	SC	DC	CW	RE	YG	MS	SMI
EPDs	5	3.9	55	95	22	2	0.7	14	22	0.60	-0.06	-0.01	47
P	34	28	15	12	P	10	P	P	P	P	P	P	-

**PBRS Wishful 911W** Lot 19

PB Limousin (100/90.0) Cow 02.03.09 PBRS 911W  
 NPF 1936364 Homozygous Polled Homozygous Black

<b>DHVO TREY 133R</b>	GPF BLAQUE RULON	BLACK DIAMOND
	AMY JO DHAN 20L	QUAIL RUN RAMONA BP
		BLACK CAT DHAN 152G
		GPF AMBER JO
<b>MAGS NADINE 110N</b>	DJ GENTLEMAN IN BLACK	COLE FIRST DOWN 46D
	MAGS LADY ACE	DJ ESSENCE
		EXLR INTRIGUE 361G
		CHAZ MISS GRETA 7003G

	CE	BW	WW	YW	MA	CM	SC	DC	CW	RE	YG	MS	SMI
EPDs	5	2.9	46	85	22	2	0.6	17	26	0.63	-0.08	0.00	44
P	P	P	P	P	P	P	P	P	P	P	P	P	-



10 PROOF of PROGRESS



# PBRs Tulsa Time 702T

## Lot 20

PB Limousin (100/88.9) Cow 01.02.07 PBRs 702T  
NPF 1881116 Double Polled Homozygous Black

GPF BLAQUE RULON	BLACK DIAMOND
<b>LESF ASPHALT 9N</b>	QUAIL RUN RAMONA BP
GPF EXTRA SWEET ELITE	LKCC TOMAHAWKS TOUCHDOWN
	HC EXTRAORDINARY HCR 61X
DJ GENTLEMAN IN BLACK	COLE FIRST DOWN 46D
<b>MAGS NADINE 110N</b>	DJ ESSENCE
MAGS LADY ACE	EXLR INTRIGUE 361G
	CHAZ MISS GRETA 7003G

	CE	BW	WW	YW	MA	CM	SC	DC	CW	RE	YG	MS	\$MI
EPDs	4	2.7	34	69	20	-1	0.6	14	1	0.45	-0.12	-0.02	40
	P	P	P	P	P	P	P	P	P	P	P	P	-

A.I. 5.14.09 to MAGS Sasquatch. P.E. 7.14 - 8.19.09 to MAGS Table Tennis 2500T.

LOT 20A - PBRs Woodward 916W. PB Limousin (100/88.7) bull, double polled, double black, 01.30.09, PBRs 916W, NPF 1933811. Sired by MAGS Table Tennis. BW: 3.4; WW: 45; YW: 84; MA: 28; SC: 0.7; CW: 12; RE: 0.34; YG: 0.01; MS: 0.00; SMI: 43.

# PBRs Tamika 720T

## Lot 21

PB Limousin (100/89.6) Cow 03.20.07 PBRs 720T  
NPF 1895832 Double Polled Double Black

GPF BLAQUE RULON	BLACK DIAMOND
<b>RLAY RULER 13N</b>	QUAIL RUN RAMONA BP
MISS NATRONA 10D	LKCC TOMAHAWKS TOUCHDOWN
	HONY POLLED QUEEN 903X
DJ GENTLEMAN IN BLACK	COLE FIRST DOWN 46D
<b>MAGS NADINE 110N</b>	DJ ESSENCE
MAGS LADY ACE	EXLR INTRIGUE 361G
	CHAZ MISS GRETA 7003G

	CE	BW	WW	YW	MA	CM	SC	DC	CW	RE	YG	MS	\$MI
EPDs	9	0.0	30	70	17	3	0.3	-	16	0.63	-0.12	-0.07	38
	14	34	28	20	12	13	10	-	P	P	P	P	-

A.I. 7.12.09 to Wulf's Titus. P.E. 7.14 - 8.19.09 to MAGS Table Tennis 2500T.

LOT 21A - PBRs Winn Dixie 932W. PB Limousin (100/86.4) cow, double polled, double black, 03.13.09, PBRs 932W, NPF 1933815. Sired by LVLS Top Criteria 8862P. CE: 12; BW: -0.5; WW: 42; YW: 81; MA: 22; CM: 4; SC: 0.2; CW: 21; RE: 0.81; YG: -0.13; MS: -0.06; SMI: 42.

# PBRs Ujana 830U

## Lot 22

PB Limousin (100/90.8) Cow 04.01.08 PBRs 0830U  
NPF 1918559 Double Polled Double Black

EXLR NEW GENERATION 071M	AUTO BLACK DAKOTA 129J
<b>MAGS SASQUATCH</b>	EXLR LUVLY 084F
MAGS FRUITFUL 487M	EXLR LIMITED EDITION 765J
	WULFS FRUITFUL 6052F
DJ GENTLEMAN IN BLACK	COLE FIRST DOWN 46D
<b>MAGS NADINE 110N</b>	DJ ESSENCE
MAGS LADY ACE	EXLR INTRIGUE 361G
	CHAZ MISS GRETA 7003G

	CE	BW	WW	YW	MA	CM	SC	DC	CW	RE	YG	MS	\$MI
EPDs	10	1.3	32	70	23	5	0.2	21	20	0.49	-0.03	0.07	42
	P	34	28	14	11	P	09	P	P	P	P	P	-

A.I. 6.15.09 to SYES User Friendly. P.E. 7.14 - 8.19.09 to MAGS Tobacco 1555T.

# PBRs Ulan 842U

## Lot 23

PB Limousin (100/90.8) Cow 04.06.08 PBRs 0842U  
NPF 1918569 Double Polled Homozygous Black

EXLR NEW GENERATION 071M	AUTO BLACK DAKOTA 129J
<b>MAGS SASQUATCH</b>	EXLR LUVLY 084F
MAGS FRUITFUL 487M	EXLR LIMITED EDITION 765J
	WULFS FRUITFUL 6052F
DJ GENTLEMAN IN BLACK	COLE FIRST DOWN 46D
<b>MAGS NADINE 110N</b>	DJ ESSENCE
MAGS LADY ACE	EXLR INTRIGUE 361G
	CHAZ MISS GRETA 7003G

	CE	BW	WW	YW	MA	CM	SC	DC	CW	RE	YG	MS	\$MI
EPDs	10	2.5	40	80	23	5	0.3	21	20	0.49	-0.03	0.07	45
	P	34	28	14	11	P	09	P	P	P	P	P	-

A.I. 6.27.09 to MAGS Unloosen. P.E. 7.14 - 8.17.09 to MAGS Tobacco 1555T.

# PBRs Umut 843U

## Lot 24

Lim-Flex (50/44.4) Cow 04.07.08 PBRs 0843U  
LFF 1916997 Polled Black

EF MAIN STAY 541M	AUTO BLACK DAKOTA 129J
<b>EF SMACK DOWN 764S</b>	EXLR 231J
ML PRUDENCE 427	V A R GATEWAY 4101
	ML PRUDENCE 9014
GPF BLAQUE RULON	BLACK DIAMOND
<b>KRVN NEVER AGAIN 381N</b>	QUAIL RUN RAMONA BP
KRVN 016K	DAVIS NEW TREND 8134
	FOUNDATION COW

	CE	BW	WW	YW	MA	CM	SC	DC	CW	RE	YG	MS	\$MI
EPDs	7	-0.7	45	84	23	1	0.1	-	4	-0.06	0.13	0.03	44
	P	30	24	10	11	P	7	-	P	P	P	P	-

A.I. 6.18.09 to Wulf's Sirloin. P.E. 7.14 - 8.17.09 to PBRs 618U.

# FALL CALVING COWS



**LOT 25 -**  
**PBRs Something Sweet 599S**



**LOT 26 -**  
**PBRs Sandy 6110S**

## PBRs Something Sweet 599S *Lot 25*

PB Limousin (100/89.4) Cow 01.05.06 PBRs 599S  
NPF 1843431 Double Polled Red

**EF MAIN STAY 541M** AUTO BLACK DAKOTA 129J EXLR DAKOTA 353G  
EXLR 231J DFCL JET SET BPC 34Y  
WULFS GUARDIAN 5074G  
**MAGS JODI** CHAZ FIRST CHOICE 6004F EXLR LUVLY 081F  
COLE FIRST DOWN 46D  
CHAZ MISS ROXANNE 92C  
SLVL SABLE COOKIE 381E WULFS QUARTERBACK 4222B  
EAFM COOKIE

	CE	BW	WW	YW	MA	CM	SC	DC	CW	RE	YG	MS	SMI
EPDs	5	1.1	36	76	18	7	-0.3	25	1	0.35	-0.11	-0.07	39
	30	36	31	21	24	28	18	P	43	40	40	39	-

**A.I. 12.24.08 to PBRs Take This. P.E. 1.6.09 - 2.19.09 to MAGS Table Tennis 2500T.**

This red and double polled three year old is sired by the past national champion bull, EF Main Stay 541M. This female is moderate frame, very attractive in her profile and sound on her feet and legs. 599S has nice EPDs, a great pedigree and the potential to be a big time asset to your program.

## PBRs Sandy 6110S *Lot 26*

Lim-Flex (50/44.1) Cow 02.27.06 PBRs 6110S  
LFF 1857492 Homozygous Polled Double Black

**EF MAIN STAY 541M** AUTO BLACK DAKOTA 129J EXLR DAKOTA 353G  
EXLR 231J DFCL JET SET BPC 34Y  
WULFS GUARDIAN 5074G  
**BT MINA 288M** EXLR LUVLY 081F  
BT BANDO 196J BON VIEW BANDO 598  
BT MINA 63D G D A R RACHEL 838  
RT RIGHT COMBINATION 29Z  
MI NIGHT

	CE	BW	WW	YW	MA	CM	SC	DC	CW	RE	YG	MS	SMI
EPDs	9	-0.1	39	80	17	3	-0.3	-	1	-0.46	0.35	0.16	45
	26	35	29	24	23	24	12	-	40	36	36	36	-

**A.I. 12.05.08 to MAGS Remote. P.E. 1.6.09 - 2.19.09 to MAGS Sasquatch.**

This 50% Lim-Flex cow is homozygous polled and double black. Sired by EF Mainstay is this female that has a 9 for CED, a -0.1 for birthweight and a .16 for marbling. This efficient looking female is complete in her makeup, smooth in her shoulder and has tremendous rib shape and depth.







**LOT 27 -  
PBRs Tepee Queen 776T**



**LOT 28 -  
PBRs Timeless 247T**

**PBRs Tepee Queen 776T**

**Lot 27**

Lim-Flex (75/67.3) Cow 10.07.07 PBRs 776T  
LFF 1904753 Homozygous Polled Homozygous Black

LVLS SECRET WEAPON 4408K LVLS FARMER 4G  
**AUTO DOLLAR GENERAL 122R** LVLS 408H  
 AUTO KYRIA 232K AUTO HACKETT 702H  
 WULFS HAPPINESS 8136H  
 GPF BLAQUE RULON BLACK DIAMOND  
**SCC NETTIE 830N** QUAIL RUN RAMONA BP  
 FOUNDATION COW

	CE	BW	WW	YW	MA	CM	SC	DC	CW	RE	YG	MS	\$MI
EPDs	7	-1.0	52	94	27	3	0.6	7	26	0.55	0.00	0.05	47
	P	32	25	16	10	P	P	P	P	P	P	P	-

**A.I. 11.27.08 to MAGS Scotland. P.E. 1.07.09 - 2.17.09 to MAGS Tabacco 1555T.**

Homozygous black and homozygous polled and sired by the multiple trait leader AUTO Dollar General 122R. This 75% Lim-Flex has tremendous numbers combining calving ease with a 52 for birth weight and a 94 for yearling weight respectfully. Those traits combined with a 27 for milk and nice carcass numbers make 776T a predictable investment. This female is moderate in her frame, deep flanked and smooth in her neck and shoulder.

**LOT 27A - PBRs 987W.** Bull, polled, black, 09.03.09, PBRs 987W. Sired by MAGS Scotland.

**PBRs Timeless 247T**

**Lot 28**

Lim-Flex (50/45.4) Cow 04.08.07 PBRs 247T  
LFF 1895809 Homozygous Polled Homozygous Black

HUNTS HI-LITER 245G WADDLES COBALT 3106  
**JCL LODESTAR 27L** TNUH MISS C245  
 LOGAN'S CHEERLEADER 280G COLE FIRST DOWN 46D  
 R P BUSHWACKER 3 944 TTCC CONFIDENCE MAKER  
**SEDGWICKS BLACKCAP 4364** R P 3RD BUSHWACKER  
 SEDGWICKS BLACKCAP 4361 R P NEW DESIGN MISS JUICE  
 RR 9440 SCOTCH CAP 1483  
 SEDGWICKS BLACKCAP 4366

	CE	BW	WW	YW	MA	CM	SC	DC	CW	RE	YG	MS	\$MI
EPDs	12	-2.6	42	92	22	7	0.3	-	22	-0.32	0.24	0.16	47
	P	25	29	25	20	P	14	-	22	22	22	21	-

**A.I. 11.26.08 to MAGS Scotland. P.E. 1.7.09 - 2.17.09 to RLAY Ruler 13N.**

Homozygous black and homozygous polled and sired by the proven JCL Lodestar 27L. The 50% Lim-Flex cow is out of a R P Bushwacker 3944 cow. She has a 12 for CED, a 92 for yearling weight and a .16 for marbling. 247T is long and strong down her top, feminine in her front end and thick ended.

**LOT 28A - PBRs 983W.** Heifer, polled, black, 09.03.09, PBRs 983W. Sired by MAGS Scotland.



**LOT 29 -  
PBRs Tori 427T**



**LOT 30 -  
KRVN Niccolette 353N**

**PBRs Tori 427T** *Lot 29*

Lim-Flex (50/44.5) Cow 04.17.07 PBRs 427T  
LFF 1895825 Homozygous Polled Homozygous Black

**DHVO ACE 128R** GPFF BLAQUE RULON BLACK DIAMOND  
AMY JO DHAN 20L QUAIL RUN RAMONA BP  
BLACK CAT DHAN 152G  
G D A R GOLD NUGGET 766  
**BT ELBA 776N** HARB NUGGET 760 J H  
BT ELBA 450H WK SLEEP TIGHT  
BT ELBA 51E

	CE	BW	WW	YW	MA	CM	SC	DC	CW	RE	YG	MS	SMI
EPDs	6	2.0	46	98	30	0	0.4	-	11	-0.19	0.20	0.12	47
P		22	26	19	11	P	5	-	17	16	16	16	-

**A.I. 12.1.08 to MAGS Remote. P.E. 1.7.09 - 2.17.09 to MAGS Tobacco 1555T.**

Tori is homozygous black and homozygous polled. Her sire is DHVO Ace, a full brother to the many time champion and highly syndicated DHVO Deuce. This 50% Lim-Flex is very complete in her make up. She is big hipped, deep sided, well balanced and stands on a big foot. This two year old will make a tremendous replacement female and a possible future donor.

**LOT 29A - PBRs 985W.** Heifer, polled, black, 09.03.09, PBRs 985W. Sired by MAGS Remote.

**KRVN Niccolette 353N** *Lot 30*

Lim-Flex (50/44.7) Cow 09.20.03 KRVN 353N  
LFF 1757885 Polled Homozygous Black

**GPFF BLAQUE RULON** BLACK DIAMOND CANE RIDGE BLACK DRAK  
QUAIL RUN RAMONA BP WULFS DIADEM 4260D  
LKCC TOMAHAWKS TOUCH-  
DOWN  
**KRVN 013K** DAVIS NEW TREND 8134 AMBL FAVORITE GIRL 36W  
VDAR NEW TREND 47  
VT TRAVELER 6807 Q9  
FOUNDATION COW

	CE	BW	WW	YW	MA	CM	SC	DC	CW	RE	YG	MS	SMI
EPDs	7	-0.1	47	86	25	-1	0.5	-	8	0.36	-0.04	-0.06	42
P		27	33	27	17	27	25	14	-	41	37	37	-

**A.I. 12.26.08 to PBRs Take This. P.E. 1.6.09 - 2.19.09 to MAGS Sasquatch.**

This 50% Lim-Flex cow is homozygous black and double polled and sired by GPFF Blaque Rulon. She has a -.1 for birth weight and a 25 for milk. This female is extremely long down her top, smooth in her neck and shoulder, big hipped and strong in her stance. This tremendous female has been a great producer for our program and is sure to continue that predictability for her new owner.

**LOT 30A - PBRs 984W.** Bull, polled, black, 09.03.09, PBRs 984W. Sired by KAJO Responder.





**BOHI Romona 277R****Lot 31**Lim-Flex (50/45.9) Cow  
LFF 182876609.15.05  
Double PolledBOHI 277R  
Black

**BR MIDLAND** TWIN VALLEY PRECISIONE161GAR PRECISION 1680  
WCC BLACKCAP C9  
BR ROYAL LASS 7036-19 S A F NEUTRON  
S A F ROYAL LASS 7036  
EXLR DAKOTA 353G WULF'S COUNT DOWN 9251C  
**ANLC MANDY RAY 2141M** CANE RIDGE DAPHNE 011D  
ANLC 42J WULFS GUARDIAN 5074G  
BURNING HEART 225W

	CE	BW	WW	YW	MA	CM	SC	DC	CW	RE	YG	MS	SMI
EPDs	9	0.3	49	93	23	2	0.2	7	27	0.11	0.14	0.24	52
	P	40	35	23	29	P	P	P	25	25	25	25	-

**A.I. 12.23.08 to EF Main Stay 541M. P.E. 1.6.09 - 2.19.09 to MAGS 2500T.**

This BR Midland cow is black and double polled. She is out of the proven donor ANLC Mandy Ray. The genetic combination of Midland and Dakota has worked very well her. This cow is deep ribbed, square hiped and heavy boned. She has a 93 for yearling weight, a .24 for marbling and a 52 for SMTI.

**PBRs True Deal 783T****Lot 32**PB Limousin (100/90.2) Cow  
NPF 190321410.17.07  
PolledPBRs 783T  
Red

**WULFS NASA 1212N** WULFS FANFARE 4055F THAWKS BLACK FRONTIER  
WULFS DELTA DAWN 4055D  
MISS WULFETTE 1212L WULF'S EXTRA BONUS 0043 E  
MISS WULFETTE 9160J  
JCL LODESTAR 27L HUNTS HI-LITER 245G  
**PBRs 456P** PBRs JOSIE LOGAN'S CHEERLEADER 280G  
EXLR DAKOTA 353G  
MAGS FOLLOW YOUR HEART

	CE	BW	WW	YW	MA	CM	SC	DC	CW	RE	YG	MS	SMI
EPDs	12	-0.1	39	81	27	11	0.9	19	23	0.26	0.03	0.08	44
	21	34	29	20	18	21	18	P	P	P	P	P	-

**A.I. 1.5.09 to KAJO Responder. P.E. 1.7.09 - 2.17.09 to RLAY Ruler 13N.**

This red and double polled purebred female is sired by Wulf's Nasa and out of a JCL Lodestar 27L daughter. 783T has a 12 for CED a 27 for milk and a .08 for marbling. This replacement female is soggy middled, has a long, fluent stride and is a easy keeper. True Deal has two trait leading sires in her pedigree and should be very predictable in the pasture.

**- NOTES -**



**LOT 33 -  
PBR Tropical 725T**



**LOT 34 -  
PBR Tapioca 779T**

**PBR Tropical 725T**

**Lot 33**

PB Limousin (100/89.1) Cow 03.28.07 PBR Tropical 725T  
NPF 1895835 Double Polled Homozygous Black

JCL LODESTAR 27L HUNTS HI-LITER 245G WADDLES COBALT 310G  
LOGAN'S CHEERLEADER 280G TNUH MISS C245  
COLE FIRST DOWN 46D  
TTCC CONFIDENCE MAKER  
LVLS SECRET WEAPON 4408K LVLS FARMER 4G  
MAGS PLACE IN THE SUN LVLS 408H  
ALCM KACTUS KID EXLR DAKOTA 353G  
MAGS FLASHBACKS

	CE	BW	WW	YW	MA	CM	SC	DC	CW	RE	YG	MS	SMI
EPDs	9	2.5	59	113	25	10	0.8	18	34	0.22	0.11	0.09	50
	21	35	29	25	20	20	18	P	P	P	P	P	-

**A.I. 12.6.08 to WLR Direct Hit. P.E. 1.7.09 - 2.17.09 to RLAY Ruler 13N.**

This purebred female is homozygous black and double polled and sired by JCL Lodestar 27L. Her dam is a very productive LVLS Secret Weapon 4408K daughter that produces much the same way. She has huge EPD's with 59 for weaning, a 113 for yearling and a 50 for \$MTI. She is feminine fronted, wide down her top and square hipped. If you are looking for trait leading genetics then give 725T a look.

**PBR Tapioca 779T**

**Lot 34**

PB Limousin (100/91.0) Cow 10.12.07 PBR Tapioca 779T  
NPF 1903212 Homozygous Polled Black

JCL LODESTAR 27L HUNTS HI-LITER 245G  
KRVN PICANTE 036P LOGAN'S CHEERLEADER 280G  
CHR KOKO EXLR HERITAGE 056H  
EXLR DAKOTA 353G BLACK MOLLY KDPI 82F  
WOLF'S COUNT DOWN 9251C  
MAGS FOLLOW YOUR HEART CANE RIDGE DAPHNE 011D  
ROKR DROVER  
MAGS DANCING FOR MONEY

	CE	BW	WW	YW	MA	CM	SC	DC	CW	RE	YG	MS	SMI
EPDs	5	3.9	55	98	22	4	0.7	1	24	0.41	-0.06	-0.08	44
	19	34	28	17	13	19	15	P	P	P	P	P	-

**A.I. 12.8.08 to WLR Direct Hit. P.E. 1.7.09 - 2.17.09 to RLAY Ruler 13N.**

This homozygous polled and black two year old is sired by KRVN Picante 036P. This female is heavy boned, soft in her pastern and free in her movement. She is strong topped and big hipped and a cow prospect you will appreciate come sale day. 779T has tremendous performance in her pedigree and EPD's.







**LOT 35 -  
PBRs Trixy 736T**



**LOT 36 -  
PBRs Sandy 6113S**

**PBRs Trixy 736T Lot 35**

Lim-Flex (50/45.2) Cow 04.12.07 PBRs 736T  
LFF 1895839 Homozygous Polled Black

E&B 1483 SCOTHCAMAN 5041 RR 9440 SCOTCH CAP 1483  
EXAR LAVA 1940 LADY 183 TRAVELER 334  
EXAR JUMBO BLACKBIRD 7707 TEHAMA BANDO 155  
S JUMBO BLACKBIRD  
COSC BREKENRIDGE COLE FIRST DOWN 46D  
PBRs HEART 0356 TUBB STORM BREKEN 299B  
MAGS KLARISSA EXLR DAKOTA 353G  
MAGS FOLLOW YOUR HEART

CE	BW	WW	YW	MA	CM	SC	DC	CW	RE	YG	MS	SMI
EPDs 4	0.4	36	73	17	2	0.4	-	-	-	-	-	-
11	31	24	17	12	09	P	-	-	-	-	-	-

**A.I. 12.4.08 to KAJO Responder. P.E. 1.7.09 - 2.17.09 to RLAY Ruler 13N.**  
Black and homozygous polled is this 50% Lim-Flex female sired by EXAR Lava 1940. 736T is very long sided, strong and wide in her top and extended through her head and neck. This two year old brood cow prospect has tremendous potential for her new owner.

**PBRs Sandy 6113S Lot 36**

Lim-Flex (50/45.9) Cow 11.17.06 PBRs 6113S  
LFF 1757885 Polled Homozygous Black

E&B 1483 SCOTHCAMAN 5041 RR 9440 SCOTCH CAP 1483  
EXAR LAVA 1940 LADY 183 TRAVELER 334  
EXAR JUMBO BLACKBIRD 7707 TEHAMA BANDO 155  
S JUMBO BLACKBIRD  
COSC BREKENRIDGE COLE FIRST DOWN 46D  
PBRs HOLLY 0367 TUBB STORM BREKEN 299B  
PBRs MOLLYS KA'-WA WULF'S DAWSON 4421D  
JCL MOLLY

CE	BW	WW	YW	MA	CM	SC	DC	CW	RE	YG	MS	SMI
EPDs 7	-0.6	32	68	18	2	0.2	-	-	-	-	-	-
12	30	24	10	12	11	P	-	-	-	-	-	-

**A.I. 12.1.08 to WLR Direct Hit. P.E. 1.7.09 - 2.17.09 to RLAY Ruler 13N.**  
Black and double polled is PBRs Sandy 6113S. She is really fancy fronted, extremely long and strong down her top and level hiped. She is youthful in her udder, deep in her flank and a female that you will truly enjoy looking at.

**PBRs Trend Setter 770T Lot 37**

PB Limousin (100/90.3) Cow 09.27.07 PBRs 770T  
NPF 1903207 Homozygous Polled Black

JCL LODESTAR 27L HUNTS HI-LITER 245G  
KRVN PICANTE 036P LOGAN'S CHEERLEADER 280G  
CHR KOKO EXLR HERITAGE 056H  
MAGS LITTLE BROTHER BLACK MOLLY KDPI 62F  
MAGS NIBBLER 188N EXLR DAKOTA 353G  
MAGS 33X 170L DJ ESSENCE  
DVFC COOKIE MONSTER 108H  
WLCC 33X

CE	BW	WW	YW	MA	CM	SC	DC	CW	RE	YG	MS	SMI
EPDs 5	3.1	51	89	23	4	0.3	5	30	0.33	-0.02	-0.02	45
16	33	27	16	12	15	14	P	P	P	P	P	-

**A.I. 11.27.08 to WLR Direct Hit. P.E. 1.7.09 - 2.17.09 to RLAY Ruler 13N.**  
This black and homozygous polled purebred female is sired by KRVN Picante 036P. She has a 51 for weaning weight, a 23 for milk and a 30 for carcass weight. 770T is deep ribbed, easy fleshing and a great cow prospect.

**PBRs Something Different Lot 38**

PB Limousin (100/91.2) Cow 01.21.06 PBRs 601S  
NPF 1843432 Double Polled Red

EXLR DAKOTA 353G WULF'S COUNT DOWN 9251C  
MAGS KABOOM CANE RIDGE DAPHNE 011D  
MAGS GO IN STYLE COLE FIRST DOWN 46D  
ROKR DROVER WULF'S MANDARIN 1121A  
MAGS FOLLOW YOUR HEART BLAZER SLBO 512B  
MAGS ANNIE  
MAGS DANCING FOR MONEY WULF'S HOME RUN 9226AA  
VRCC JOSIE 004U

CE	BW	WW	YW	MA	CM	SC	DC	CW	RE	YG	MS	SMI
EPDs 4	3.4	44	82	12	3	0.8	-2	14	0.56	-0.22	0.02	46
31	37	32	23	26	29	19	P	P	P	P	P	-

**A.I. 12.4.08 to PBRs Take This. P.E. 1.6.09 - 2.19.09 to MAGS Sasquatch.**  
This red and double polled purebred three year old is sired by MAGS Kaboom. She has a 82 for yearling weight and a .56 for REA. Something Different is strong topped, heavy muscled and very stout in her appearance.

**RLAY**  
**RULER 13N**  
 Daughters



**LOT 38 -**  
**PBRs Tilley 780T**



**LOT 39 -**  
**PBRs Special Night 689S**

**PBRs Tilley 780T** **Lot 38**

Lim-Flex (75/67.0) Cow  
 LFF 1906173

10.13.07  
 Double Polled

PBRs 780T  
 Double Black

GPF BLAQUE RULON  
**RLAY RULER 13N**  
 MISS NATRONA 10D

BR MIDLAND  
**BOHI ROMONA 277R**  
 ANLC MANDY RAY 2141M

BLACK DIAMOND  
 QUAIL RUN RAMONA BP  
 LKCC TOMAHAWKS TOUCHDOWN  
 HONY POLLED QUEEN 903X  
 TWIN VALLEY PRECISIONE161  
 BR ROYAL LASS 7036-19  
 EXLR DAKOTA 353G  
 ANLC 42J

	CE	BW	WW	YW	MA	CM	SC	DC	CW	RE	YG	MS	\$MI
EPDs	9	0.0	44	83	20	1	0.2	-	17	0.35	0.00	0.01	44
P		32	26	12	12	P	P	-	P	P	P	P	-

A.I. 12.9.08 to KAJO Responder. P.E. 1.7.09 - 2.17.09 to MAGS Tobacco 1555T.

Sired by one of our leading herd sires RLAY Ruler 13N is this double black and double polled female. She is a 75% Lim-Flex that is moderate in her frame, correct in her hip and big boned and soft pasterned. She has a 9 for CED, a 83 for yearling weight and a .35 for REA. This is a great opportunity to add a top quality replacement female to your program.

**PBRs Special Night 689S** **Lot 39**

Lim-Flex (75/65.9) Cow  
 LFF 1877114

11.01.06  
 Double Polled

PBRs 689S  
 Double Black

GPF BLAQUE RULON  
**RLAY RULER 13N**  
 MISS NATRONA 10D

EXAR LAVA 1940  
**PBRs MIDNIGHT 441P**  
 MAGS MANDARIN 117L

BLACK DIAMOND  
 QUAIL RUN RAMONA BP  
 LKCC TOMAHAWKS TOUCHDOWN  
 HONY POLLED QUEEN 903X  
 E&B 1483 SCOTHCAMAN 5041  
 EXAR JUMBO BLACKBIRD 7707  
 EXLR DAKOTA 353G  
 MAGS GO IN STYLE

	CE	BW	WW	YW	MA	CM	SC	DC	CW	RE	YG	MS	\$MI
EPDs	7	-1.5	28	63	17	2	0.3	-	8	0.29	-0.06	-0.07	36
P		31	25	10	10	P	P	-	P	P	P	P	-

A.I. 11.27.08 to DHVO Trey. P.E. 1.7.09 - 2.17.09 to MAGS Tobacco 1555T.

Double black and double polled and sired by RLAY Ruler 13N. This three year old female is a 75% Lim-Flex that is easy fleshing, thick ended and smooth shouldered. She has a -1.5 for birth weight, moderate growth and milk.





**LOT 40 -  
PBRs Topless 795T**



**LOT 41 -  
PBRs Tapioca 799T**

**PBRs Topless 795T** *Lot 40*

PB Limousin (87/77.1) Cow 11.18.07 PBRs 795T  
NPF 1906875 Homozygous Polled Double Black

<b>RLAY RULER 13N</b>	GPFF BLAQUE RULON	BLACK DIAMOND
MISS NATRONA 10D		QUAIL RUN RAMONA BP
		LKCC TOMAHAWKS TOUCHDOWN
		HONY POLLED QUEEN 903X
<b>BLACK CHERRY</b>	CARROUSELS JIGSAW	WULFS QUARTERBACK 4222B
PCC 917J		ELOR BLACK LACE 2266B
		CHAZ FIRST CHOICE 6004F
		FOUNDATION COW

	CE	BW	WW	YW	MA	CM	SC	DC	CW	RE	YG	MS	SMI
EPDs	6	0.3	37	69	19	1	0.2	-	-	-	-	-	-
	P	P	P	P	P	P	P	-	-	-	-	-	-

A.I. 1.4.09 to KAJO Responder. P.E. 1.7.09 - 2.17.09 to MAGS Tobacco 1555T.

Double black and homozygous polled and sired by RLAY Ruler. This purebred female is strong topped, level from her hooks to her pins and sound footed. This two year old has tremendous earning potential and will be easy to mate.

**PBRs Tapioca 799T** *Lot 41*

PB Limousin (100/88.8) Cow 11.21.07 PBRs 799T  
NPF 1906183 Polled Red

<b>RLAY RULER 13N</b>	GPFF BLAQUE RULON	BLACK DIAMOND
MISS NATRONA 10D		QUAIL RUN RAMONA BP
		LKCC TOMAHAWKS TOUCHDOWN
		HONY POLLED QUEEN 903X
<b>EXLR SAMIE 621L</b>	EXLR DAKOTA 353G	WULF'S COUNT DOWN 9251C
LKCC SMITH CATTLE 110C		CANE RIDGE DAPHNE 011D
		LKCC BLACK LOTO 1079W
		SMITH CATTLE 646R

	CE	BW	WW	YW	MA	CM	SC	DC	CW	RE	YG	MS	SMI
EPDs	1	3.9	51	89	21	-1	0.5	-	8	0.51	-0.13	-0.13	42
	14	32	26	13	12	13	11	-	P	P	P	P	-

Observed bred 1.23.09 to MAGS Tobacco 1555T.

Red and polled and a female that combines GPFF Blaque Rulon and EXLR Dakota 353G in her pedigree. She has a 51 for weaning weight, a 21 for milk and a .51 for REA. 799T is stout made, efficient in her frame size and loaded with muscle. Tapioca balances up very nicely and stands strong in her stance.



# PBRs Top Star 766T

Lot 42

PB Limousin (100/87.3) Cow  
NPF 1906172 09.21.07 Homozygous Polled PBRs 766T Double Black

<b>RLAY RULER 13N</b>	GPFF BLAQUE RULON MISS NATRONA 10D	BLACK DIAMOND QUAIL RUN RAMONA BP LKCC TOMAHAWKS TOUCHDOWN HONY POLLED QUEEN 903X GREENWOODPOLLED455ROCKET
<b>COLE 57N</b>	ANDERS JAG COLE 34G	ANDERS GEMINI COLE FIRST DOWN 46D COLE 69Y

	CE	BW	WW	YW	MA	CM	SC	DC	CW	RE	YG	MS	SMI
EPDs	7	0.5	35	69	13	3	0.2	-	17	0.50	-0.07	-0.08	38
	13	32	26	13	11	12	10	-	P	P	P	P	-

A.I. 11.22.08 to KAJO Responder. P.E. 1.7.09 - 2.17.09 to MAGS Tobacco 1555T.

Homozygous polled and double black and sired by RLAY Ruler 13N. This pure-bred female has a .5 for birthweight and a .50 for marbling. She is easy fleshing, wide down her top and more refined in her lower 1/3.

LOT 42A - PBRs 984W. Bull, polled, black, 09.03.09, PBRs 987W. Sired by KAJO Responder.

# PBRs Tinsel Town 788T

Lot 44

PB Limousin (100/88.9) Cow  
NPF 1906177 10.27.07 Double Polled PBRs 788T Red

<b>RLAY RULER 13N</b>	GPFF BLAQUE RULON MISS NATRONA 10D	BLACK DIAMOND QUAIL RUN RAMONA BP LKCC TOMAHAWKS TOUCHDOWN HONY POLLED QUEEN 903X EXLR DAKOTA 353G
<b>PBRs RED ROSE 582R</b>	MAGS KABOOM PBRs HOLLY 0367	MAGS GO IN STYLE COSC BREKENRIDGE PBRs MOLLYS KA'WA

	CE	BW	WW	YW	MA	CM	SC	DC	CW	RE	YG	MS	SMI
EPDs	13	-3.0	23	55	16	3	0.4	-	9	0.40	-0.09	-0.11	34
	13	31	25	11	11	12	09	-	P	P	P	P	-

A.I. 1.5.09 to KAJO Responder. P.E. 1.7.09 - 2.17.09 to MAGS Tobacco 1555T.

This two year old is red and double polled. She is sired by RLAY Ruler 13N and will make a nice replacement prospect. She has a -3.0 for birthweight and a 16 for milk. 788T is long sided and wide hiped and a nice prospect.

# PBRs Tupelo Honey 762T

Lot 46

Lim-Flex (75/66.8) Cow  
LFF 1906874 09.15.07 Homozygous Polled PBRs 762T Homozygous Black

<b>MAGS REMOTE</b>	JCL LODESTAR 27L MAGS 13M	HUNTS HI-LITER 245G LOGAN'S CHEERLEADER 280G MAGS JUMANJI WK QUEEN LASSIE 0332
<b>BLACK CHERRY</b>	CARROUSELS JIGSAW PCC 917J	WULFS QUARTERBACK 4222B ELOR BLACK LACE 2266B CHAZ FIRST CHOICE 6004F FOUNDATION COW

	CE	BW	WW	YW	MA	CM	SC	DC	CW	RE	YG	MS	SMI
EPDs	8	1.9	51	95	21	4	0.5	-	-	-	-	-	-
	P	31	25	15	08	P	12	-	-	-	-	-	-

A.I. 1.2.09 to PBRs 6123S. P.E. 1.7.09 - 2.17.09 to RLAY Ruler 13N.

Sired by MAGS Remote is this homozygous black and homozygous polled 75% Lim-Flex female. She has a 51 for weaning weight, a 95 for yearling weight and a 21 for milk. 762T is attractive in her profile, long down her top and long in her stride.

# PBRs Turn It Up 793T

Lot 43

PB Limousin (100/89.8) Cow  
NPF 1906181 11.18.07 Double Polled PBRs 793T Double Black

<b>RLAY RULER 13N</b>	GPFF BLAQUE RULON MISS NATRONA 10D	BLACK DIAMOND QUAIL RUN RAMONA BP LKCC TOMAHAWKS TOUCHDOWN HONY POLLED QUEEN 903X
<b>PBRs 472P</b>	JCL LODESTAR 27L PBRs JOSIE	HUNTS HI-LITER 245G LOGAN'S CHEERLEADER 280G EXLR DAKOTA 353G MAGS FOLLOW YOUR HEART

	CE	BW	WW	YW	MA	CM	SC	DC	CW	RE	YG	MS	SMI
EPDs	8	1.1	45	87	18	4	0.5	-	21	0.50	-0.05	-0.08	41
	14	32	25	12	11	12	10	-	P	P	P	P	-

Bred 01.07.09 to PBRs 644S. P.E. 1.07 - 02.17.09 to MAGS 1555T.

This RLAY Ruler daughter is double black and double polled and out of a JCL Lodestar 27L dam. She has a 8 for CED and a .50 for marbling. 793T has tremendous volume, is deep sided and broody in her look.

# PBRs Track Star 757T

Lot 45

Lim-Flex (75/66.8) Cow  
LFF 1906871 09.09.07 Homozygous Polled PBRs 757T Homozygous Black

<b>MAGS REMOTE</b>	JCL LODESTAR 27L MAGS 13M	HUNTS HI-LITER 245G LOGAN'S CHEERLEADER 280G MAGS JUMANJI WK QUEEN LASSIE 0332
<b>BLACK CHERRY</b>	CARROUSELS JIGSAW PCC 917J	WULFS QUARTERBACK 4222B ELOR BLACK LACE 2266B CHAZ FIRST CHOICE 6004F FOUNDATION COW

	CE	BW	WW	YW	MA	CM	SC	DC	CW	RE	YG	MS	SMI
EPDs	8	1.3	45	88	21	4	0.5	-	-	-	-	-	-
	P	31	25	15	08	P	12	-	-	-	-	-	-

A.I. 12.1.08 to MAGS Scotland. P.E. 1.7.09 - 2.17.09 to PBRs 6123S.

A 75% MAGS Remote daughter that is homozygous black and homozygous polled. 757T is deep and bold in her rib, easy fleshing and stands square on all four corners. She has a 88 for yearling weight and a 21 for milk.

LOT 45A - PBRs 979W. Bull, polled, black, 09.01.09, PBRs 987W. Sired by MAGS Scotland.



20 PROOF of PROGRESS

## PBRS Just After 514R

Lot 47

PB Limousin (100/91.0) Cow 02.26.05 PBR5 514R  
NPF 1822574 Double Polled Double Black

EXLR DAKOTA 353G WULF'S COUNT DOWN 9251C  
**PBR5 BLACK DAKOTA 001** CANE RIDGE DAPHNE 011D  
TRAK GLORY WULF'S HOME RUN 9226AA  
LVLS POLLED JUSTICE 0601E WLCC BLACK PERSUASION  
**MAGS JUST AFTER DARK** LVLS POLLED BLACK JACK  
MAGS DAUGHTER OF DARKNESS LVLS JENI 601V  
WULFS RAMBLER 8400X  
GLNM POLLED SASHA 022 Y

	CE	BW	WW	YW	MA	CM	SC	DC	CW	RE	YG	MS	\$MI
EPDs	5	2.8	52	85	24	6	0.8	-	17	0.45	-0.08	-0.07	43
	26	37	27	19	20	24	10	-	P	P	P	P	-

A.I. 12.27.08 to DHVO Trey. P.E. 1.6.09 - 2.19.09 to MAGS Sasquatch.

Double black and double polled is this purebred female sired by PBR5 Black Dakota 001 and out of a nice LVLS Polled Justice cow. She has a 52 for weaning weight EPD and a 24 for milk. This female is easy in her condition, deep in both her fore and rear rib and has a great disposition.

## PBRS Maiden 440P

Lot 49

PB Limousin (100/93.1) Cow 05.05.04 PBR5 440P  
NPF 1778143 Double Polled Red

WULFS GUARDIAN 5074G WULFS RAMBLER 8400X  
**EXLR GAUCHO 362K** WULFS EXAMPLE 5074E  
EXLR ALLIANCE 337G PMDB ALLIANCE  
EXLR DAKOTA 353G WULF'S COUNT DOWN 9251C  
**PBR5 MEGAN'S MAIDEN** CANE RIDGE DAPHNE 011D  
JCL MEGAN SY BONANZA  
JCL MOLLY

	CE	BW	WW	YW	MA	CM	SC	DC	CW	RE	YG	MS	\$MI
EPDs	6	2.1	45	78	23	4	0.2	12	20	0.57	-0.13	-0.15	39
	26	35	28	16	24	24	13	P	37	33	33	33	-

A.I. 12.4.08 to JCL Lodestar 27L. P.E. 1.6.09 - 2.19.09 to MAGS 2500T.

Red and double polled and sired by the Wulf's Guardian son, EXLR Gauch 362K. She has nice balance to weaning and yearling EPD's and a 23 for milk. This female is moderate framed, low maintenance and has a nice udder.

## PBRS Tigerus 467T

Lot 51

Lim-Flex (50/46.6) Cow 09.15.07 PBR5 467T  
LFF 1896773 Homozygous Polled Double Black

JCL LODESTAR 27L HUNTS HI-LITER 245G  
**PBR5 BIG LODE 507R** LOGAN'S CHEERLEADER 280G  
EXLR JULIE 617L EXLR POLLED BENCHMARK709G  
EXLR 620G  
E A R BIG TIME K53 537 SITZ TRAVELER 7594  
**BT WITCH 64M** LADY RITO POWER 1137 EAR  
JRI MISS EXT 232H N BAR EMULATION EXT  
JRI MS TRAVELER 236D2

	CE	BW	WW	YW	MA	CM	SC	DC	CW	RE	YG	MS	\$MI
EPDs	11	-0.9	52	99	26	3	0.3	-	23	0.27	0.05	0.06	47
	11	26	21	11	11	10	05	-	P	P	P	P	-

A.I. 12.25.08 to WLR Direct Hit. P.E. 1.7.09 - 2.17.09 to RLAY Ruler 13N.

467T is double black and homozygous polled. She has a 11 for CED, -.9 for birth weight, 52 for weaning, 99 for yearling weight and a 26 for milk. As you can see 467T has exceptional EPD's to go with a predictable pedigree. This female is well balanced, easy fleshing and has a great disposition.

## PBRS Sweet Success 677S

Lot 48

PB Limousin (100/91.3) Cow 10.01.06 PBR5 677S  
NPF 1874270 Double Polled Black

GPF BLAQUE RULON BLACK DIAMOND  
**CARROUSELS PEAK POWER** QUAIL RUN RAMONA BP  
HC CHERISH HC POLLED MANHATTAN  
HACO MISTY MORNING  
MAGS LITTLE BROTHER EXLR DAKOTA 353G  
**MAGS NEW GAMES 169N** DJ ESSENCE  
MAGS GAMES WE PLAY 245L DVFC COOKIE MONSTER 108H  
MAGS GAMES WE PLAY

	CE	BW	WW	YW	MA	CM	SC	DC	CW	RE	YG	MS	\$MI
EPDs	2	3.6	39	65	14	1	0.4	15	11	0.62	-0.18	-0.14	38
	P	34	26	19	17	P	P	P	P	P	P	P	-

A.I. 12.4.08 to KRVN Picante. P.E. 1.6.09 - 2.19.09 to MAGS 2500T.

Sired by Carrousel's Peak Power is this black and double polled female. This heavy muscled female is beautiful to look at, sound on her feet and legs and very strong in her top. 677D is a three year old that has a .62 for REA and is bred for performance.

## PBRS Truly Yours 267T

Lot 50

Lim-Flex (50/45.1) Cow 05.01.07 PBR5 267T  
LFF 1895811 Double Polled Homozygous Black

JCL LODESTAR 27L HUNTS HI-LITER 245G  
**KRVN PURSUIT OF GOLD 137P** LOGAN'S CHEERLEADER 280G  
LFL LACY 1007L MINE POLLED DRYDOCK 004H  
ALAW ELIZABETH 21E  
SUMMITCRESTHIGHPRIME 0H29 GARDENS PRIME TIME  
**LOUP RIVER BLACKCAP 23P9** SUMMITCREST MISSIE 2F55  
LOUP RIVER BLACKCAP 23L5 UMF CAVAN OF WYE 7915  
DODSWOOD BLACKCAP 680792F

	CE	BW	WW	YW	MA	CM	SC	DC	CW	RE	YG	MS	\$MI
EPDs	10	-0.6	47	90	21	5	0.2	-	26	-0.15	0.22	0.22	50
	P	21	25	17	12	P	05	-	18	16	16	16	-

A.I. 12.12.08 PBR5 Take This. P.E. 1.7.09 - 2.17.09 to RLAY Ruler 13N.

Homozygous black and double polled is this JCL Lodestar 27L grand daughter. This 50% Lim-Flex female has a 10 for CED, a 90 for yearling weight, a .22 for marbling and a 50 SMTI. She is deep and angular, feminine in her head and neck and very productive in her look.

## BOHI Lim Flex 21P

Lot 52

Lim-Flex (50/47.5) Cow 02.18.04 PLRV 21P  
LFF 1795165 Polled Homozygous Black

YKCC POLLED NORTHERN 204B PJBB FIVE-O-NINE 833W  
**CHTT 5434D** CLASSY DEAL 223W  
CHTT 34U EARTHQUAKE 93  
NEUMEYER COW 3934  
R R SCOTCHCAP 9440 SCOTCH CAP  
**MAGS4329K** BLACKCAP OF RR 5367

	CE	BW	WW	YW	MA	CM	SC	DC	CW	RE	YG	MS	\$MI
EPDs	5	0.4	41	71	16	-1	0.4	6	10	0.12	-0.02	0.02	43
	25	32	27	22	22	23	12	P	P	P	P	P	-

Bred 11.28.08 to MAGS 2500T.

Here is a 50% Lim-Flex that is homozygous black and double polled. She combines a low birthweight with moderate growth and a 16 for milk. She is the efficient kind, long and strong down her top and thick ended.

LOT 52A - PBR5 976W & 977W. Twin Bulls, polled, black, 09.01.09, PBR5 976W & 977W. Sired by MAGS Table Tennis 2500T. BW: 55 lbs. & 60 lbs.



## PBRS September Morn 683S

Lot 53

PB Limousin (100/90.6) Cow 10.17.06 PBRS 683S  
NPF 1877683 Double Polled Black

LESF ASPHALT 9N GPF BLAQUE RULON  
GPF EXTRA SWEET ELITE BLACK DIAMOND  
EXLR DAKOTA 353G QUAIL RUN RAMONA BP  
PBRS MEGAN'S MAIDEN HC EXTRAORDINARY HCR 61X  
JCL MEGAN WOLF'S COUNT DOWN 9251C  
CANE RIDGE DAPHNE 011D  
SY BONANZA  
JCL MOLLY

	CE	BW	WW	YW	MA	CM	SC	DC	CW	RE	YG	MS	\$MI
EPDs	2	3.3	31	60	26	-2	0.6	6	-4	0.31	-0.12	-0.12	36
	P	30	27	20	17	P	P	P	P	P	P	P	-

A.I. 12.8.08 to MAGS Sasquatch. P.E. 1.7.09 - 2.17.09 to MAGS Tobacco 1555T.

Sired by LESF Asphalt 9N is this black and double polled purebred female. She has a 26 for milk and a .31 for REA. This three year old has a nice udder, has extra extension in her front end and travels very well.

## LOT 54 - PBRS Southern Jewel 671S

## PBRS Southern Jewel 671S

Lot 54

PB Limousin (100/92.4) Cow 09.24.06 PBRS 671S  
NPF 1868094 Double Polled Homozygous Black

TUBB LAW DOG 009L EXLR POLLED BENCHMARK709G WULFS DAWSON 4421D  
CHR JO DEE PMDB ALLIANCE  
EXLR GAUCHO 362K HUGS FULLBACK 81F  
PBRS NUTRONESS 464P WULFS GUARDIAN 5074G  
PBRS NUTRO-NAS 047 EXLR ALLIANCE 337G  
CABIN CREEK NUTRON 115G  
TRAK FARRAH

	CE	BW	WW	YW	MA	CM	SC	DC	CW	RE	YG	MS	\$MI
EPDs	8	1.1	33	60	20	1	0.3	20	18	0.54	-0.13	-0.15	35
	19	33	21	14	13	19	P	P	P	P	P	P	-

A.I. 12.27.08 to PBRS Take This. P.E. 1.7.09 - 2.17.09 to RLAY Ruler 13N.

Sired by TUBB Law Dog 009L is this homozygous black and double polled female. Southern Jewel is bold in her rib, smooth in her shoulder, big footed and has nice softness to her pastern. We are sure you will love 671S come sale day. She will make a great addition to the pastures of your ranch.

# SPRING BRED HEIFERS

## PBRS 348U

Lot 55

Lim-Flex (50/45.3) Cow 04.05.08 PBRS 348U  
LFF 1919138 Homozygous Polled Double Black

MAGS SASQUATCH EXLR NEW GENERATION 071M AUTO BLACK DAKOTA 129J  
MAGS FRUITFUL 487M EXLR LUVLY 084F  
EXLR LIMITED EDITION 765J  
BON VIEW NEW DESIGN 1407 WULFS FRUITFUL 6052F  
SEDGWICKS PRIDE 3465 B/R NEW DESIGN 036  
SEDGWICKS PRIDE 4651 BON VIEW PRIDE 664  
SEDGWICKS TRAVELER 7  
SEDGWICKS PRIDE 92

	CE	BW	WW	YW	MA	CM	SC	DC	CW	RE	YG	MS	\$MI
EPDs	10	-0.9	34	76	29	3	0.0	11	19	-0.14	0.24	0.23	47
	13	33	26	12	11	12	05	P	P	P	P	P	-

P.E. 7.10.09 - 8.17.09 to MAGS Unmasked Man 4613U.

Homozygous polled and double black is this April 2008 heifer sired by MAGS Sasquatch. 348U has a 10 for CED, a 29 for milk and a .23 for marbling. This nice balanced female is level over her top, smooth in her shoulder, has tremendous volume and rib shape and is very sound. This is a great opportunity to add a top notch 50% Lim-Flex replacement female to your program. Could possibly be the best spring bred Limflex female offered and a P Bar S favorite. Her maternal sister 127T sired by JCL Lodestar 27L sold in the 2009 Council sale at \$10,000 to Express Ranches.

## LOT 55 - PBRS 348U





**LOT 56 -  
PBRs 208U**



**LOT 57 -  
PBRs 188U**

**PBRs 208U** Lot **56**

Lim-Flex (50/45.3) Cow 03.19.08 PBRs 208U  
LFF 1919133 Homozygous Polled Double Black

**MAGS SASQUATCH** EXLR NEW GENERATION 071M AUTO BLACK DAKOTA 129J  
EXLR LUVLY 084F  
MAGS FRUITFUL 487M EXLR LIMITED EDITION 765J  
WULFS FRUITFUL 6052F  
**BT COUNTESS 221M** BON VIEW NEW DESIGN 878 B/R NEW DESIGN 036  
BON VIEW GAMMER 85  
BT COUNTESS 100K V N A R EXT 41G  
M F COUNTESS 6152

	CE	BW	WW	YW	MA	CM	SC	DC	CW	RE	YG	MS	SMI
EPDs	10	-1.4	36	78	26	3	0.0	14	13	-0.08	0.15	0.17	46
	13	34	27	13	11	12	05	P	P	P	P	P	-

**A.I. 5.28.09 to LVLS Top Criteria. P.E. 6.14.09 - 8.17.09 to PBRs 418U.**

Sired by MAGS Sasquatch and out of a really nice Bon View New Design 878 cow is 208U who is homozygous polled and double black. This 50% Lim-Flex female has extra extension through her neck and shoulder, is moderate framed and looks to be a very easy keeper. Those economical traits combined with superb EPD's make 208U a sale highlight.

**PBRs 188U** Lot **57**

Lim-Flex (50.45.0) Cow 03.17.08 PLRV 188U  
LFF 1919132 Homozygous Polled Homozygous Black

**KRVN PICANTE 036P** JCL LODESTAR 27L HUNTS HI-LITER 245G  
CHR KOKO LOGAN'S CHEERLEADER 280G  
EXLR HERITAGE 056H  
BLACK MOLLY KDPI 62F  
**BT BONNY 304M** DA ES RO TWISTER 0627 KRUGERRAND OF DONAMERE490  
DE KAP RITO BURGESS 682  
BT BISHOP 92B  
BT BONNY 53J BT BONNY 61F

	CE	BW	WW	YW	MA	CM	SC	DC	CW	RE	YG	MS	SMI
EPDs	8	0.2	46	94	22	3	0.2	2	20	-0.10	0.16	0.05	44
	13	34	28	16	13	12	9	P	P	P	P	P	-

**A.I. 5.28.09 to Wulfs Sirloin. P.E. 6.13.09 - 8.17.09 to PBRs 418U.**

Homozygous polled and homozygous black is this 50% Lim-Flex female that is sired by KRVN Picante 036P. She is attractive in her profile, deep in her fore rib, square in her hip and stands on a stout bone and a big foot. She has an 8 for CED, a 94 for yearling EPD and a .05 for marbling.



**LOT 58 -  
PBRs 18U**



**LOT 59 -  
PBRs 148U**

**JCL  
LODESTAR  
Lim-Flex Heifers**

**PBRs 18U Lot 58**

Lim-Flex (100/90.6) Cow 03.02.08 PBRs 18U  
LFF 1919124 Homozygous Polled Homozygous Black

HUNTS HI-LITER 245G WADDLES COBALT 3106  
**JCL LODESTAR 27L** TNUH MISS C245  
 LOGAN'S CHEERLEADER 280G COLE FIRST DOWN 46D  
 TTCC CONFIDENCE MAKER  
 HOMEACRES PLATINUM 723 G D A R OSCAR 711  
**HOMEACRES GILDA D50** HOMEACRES HANA 103  
 HOMEACRES GILDA 978 D F SLEEP TIGHT 5121  
 OMEACRES GILDA 935

	CE	BW	WW	YW	MA	CM	SC	DC	CW	RE	YG	MS	SMTI
EPDs	10	-0.2	52	98	26	6	0.4	-	46	-0.29	0.39	0.33	54
	19	35	24	20	20	19	P	-	P	P	P	P	-

**A.I. 5.28.09 to SYES User Friendly 524U. P.E. 6.13.09 - 8.18.09 to PBRs 418U.**

Broody says it best! This homozygous black and homozygous polled JCL Lodestar 27L female will make a tremendous cow. She has a -0.2 for BW, a 52 for weaning, 26 for milk, .33 for marbling and a 54 for SMTI. You can look a long time and not find a better combination of EPDs for calving ease, growth, maternal traits and carcass traits. Combine that in a moderate, easy fleshing package and you have an exceptional cow prospect.

**PBRs 148U Lot 59**

Lim-Flex (50/45.4) Cow 03.14.08 PBRs 148U  
LFF 1919130 Homozygous Polled Homozygous Black

HUNTS HI-LITER 245G WADDLES COBALT 3106  
**JCL LODESTAR 27L** TNUH MISS C245  
 LOGAN'S CHEERLEADER 280G COLE FIRST DOWN 46D  
 TTCC CONFIDENCE MAKER  
 DALEBANKS EXTENDER 6012 N BAR EMULATION EXT  
**SEDGWICKS BLACKCAP 463** PRINCESS 4007 OF DALEBANKS  
 SEDGWICKS BLACKCAP 461 GAR PRECISION 1680  
 SEDGWICKS BLACKCAP 469

	CE	BW	WW	YW	MA	CM	SC	DC	CW	RE	YG	MS	SMTI
EPDs	15	-3.3	48	102	23	7	0.3	-	40	-0.19	0.34	0.28	52
	19	35	24	20	20	19	P	-	P	P	P	P	-

**P.E. 6.13.09 - 8.17.09 to PBRs 418U.**

Here is another really nice double homozygous JCL Lodestar 27L daughter. She is a 50% Lim-Flex that is really fancy, very feminine and maternal in her look. She has a -3.3 for BW and a 102 for yearling EPD. 148U also has a .28 for marbling EPD and a 52 for SMTI. You can buy with confidence with young prospect.





**LOT 60 -  
PBRs 178U**



**LOT 61 -  
PBRs 368U**

**PBRs 178U** Lot **60**

Lim-Flex (50/45.4) Cow 03.17.08 PBRs 178U  
LFF 1919131 Homozygous Polled Homozygous Black

HUNTS HI-LITER 245G WADDLES COBALT 3106  
**JCL LODESTAR 27L** TNUH MISS C245  
 LOGAN'S CHEERLEADER 280G COLE FIRST DOWN 46D  
 TTCC CONFIDENCE MAKER  
 BON VIEW NEW DESIGN 1407 B/R NEW DESIGN 036  
**SEDGWICKS ANNIE 8111** BON VIEW PRIDE 664  
 SEDGWICKS ANNIE 8117 W C C BANDO B88  
 SEDGWICKS ANNIE 4561

	CE	BW	WW	YW	MA	CM	SC	DC	CW	RE	YG	MS	SMTI
EPDs	14	-2.7	44	94	27	7	0.4	10	40	-0.28	0.39	0.46	57
	20	36	30	22	23	20	15	P	P	P	P	P	-

**A.I. 6.8.09 to MAGS Unloosen. P.E. 6.13.09 - 8.17.09 to PBRs 418U.**

These 50% Lim-Flex females sired by JCL Lodestar 27L are amazing. Deep bodied, easy in their condition and sound. They all have tremendous EPD's and earning potential. 178U has a 14 for CED, a 27 for milk and a .46 for marbling. These traits combined give her a 57 for SMTI.

**PBRs 368U** Lot **61**

Lim-Flex (50/45.4) Cow 04.08.08 PBRs 368U  
LFF 1919139 Homozygous Polled Homozygous Black

HUNTS HI-LITER 245G WADDLES COBALT 3106  
**JCL LODESTAR 27L** TNUH MISS C245  
 LOGAN'S CHEERLEADER 280G COLE FIRST DOWN 46D  
 TTCC CONFIDENCE MAKER  
 PLATTEMERE DATABASE CONNEALY DATELINE  
**SEDGWICKS GEORGINA 4792** PLATTEMERE REVA 109  
 SEDGWICKS GEORGINA 4796 O C C BACKSTOP 888B  
 SEDGWICKS GEORGINA 14

	CE	BW	WW	YW	MA	CM	SC	DC	CW	RE	YG	MS	SMTI
EPDs	11	-0.7	53	109	26	7	0.4	-	33	-0.20	0.29	0.16	50
	18	35	30	20	21	18	14	-	P	P	P	P	-

**A.I. 6.17.09 to EF Mainstay 541M. P.E. 7.10.09 - 8.17.09 to MAGS Unmasked Man 4613U.**

Double homozygous and double good is this 50% Lim-Flex female sired by JCL Lodestar 27L. 368U has a 53 for weaning weight, a 109 for yearling and a 26 for milk. She is soggy middled, strong topped and very efficient in her condition.



**PBRS 28U****Lot 62**Lim-Flex (50/45.4) Cow  
LFF 191912503.02.08  
Homozygous PolledPBRS 28U  
Homozygous Black

HUNTS HI-LITER 245G  
**JCL LODESTAR 27L**  
LOGAN'S CHEERLEADER 280G

WADDLES COBALT 3106  
TNUH MISS C245  
COLE FIRST DOWN 46D  
TTCC CONFIDENCE MAKER  
R P 3RD BUSHWACKER  
R P NEW DESIGN MISS JUICE  
T C DIVIDEND 963  
SEDGWICKS BLACKBIRD 195

	CE	BW	WW	YW	MA	CM	SC	DC	CW	RE	YG	MS	SMI
EPDs	12	-2.1	46	99	23	7	0.4	-	-	36	-0.29	0.35	0.27
	19	35	24	20	19	19	P	-	-	P	P	P	-

**A.I. 5.15.09 to LVLS Top Criteria. P.E. 6.13.09 - 8.17.09 to PBRS 418U.**

Sired by JCL Lodestar 27L is this 50% Lim-Flex female that is double homozygous. She has a 12 for CED, a 99 for yearling weight, a .27 for marbling and a 51 for SMTI. This female is deep sided and bold in her rib, she has tremendous flex to her hock and pastern when on the move and will make a nice replacement prospect.

**PBRS 388U****Lot 64**Lim-Flex (50/45.4) Cow  
LFF 191914004.10.08  
Homozygous PolledPBRS 388U  
Homozygous Black

HUNTS HI-LITER 245G  
**JCL LODESTAR 27L**  
LOGAN'S CHEERLEADER 280G

WADDLES COBALT 3106  
TNUH MISS C245  
COLE FIRST DOWN 46D  
TTCC CONFIDENCE MAKER  
R P 3RD BUSHWACKER  
R P NEW DESIGN MISS JUICE  
T C DIVIDEND 963  
SEDGWICKS BLACKBIRD 195

SUMMITCREST HI FLYER 3B18  
**LOUP RIVER BLACKBIRD 09P5**  
LOUP RIVER BLACKBIRD 22L8

SUMMITCREST LASS 229Y  
LOUP RIVER KRUGERRANDD43G  
BLACKBIRD B A S 468

	CE	BW	WW	YW	MA	CM	SC	DC	CW	RE	YG	MS	SMI
EPDs	14	-2.6	48	98	25	7	0.4	12	36	-0.16	0.34	0.22	50
	20	35	30	21	20	19	14	P	P	P	P	P	-

**P.E. 7.10.09 - 8.17.09 to PBRS 418U.**

This homozygous black and homozygous polled Lim-Flex heifer is also sired by JCL Lodestar 27L. She is moderate in her frame, sound footed and balances up very nicely. She has a -2.6 for birth weight and a 25 for her milk EPD.

**PBRS 78U****Lot 63**Lim-Flex (50/45.4) Cow  
LFF 191912603.10.08  
Homozygous PolledPBRS 78U  
Homozygous Black

HUNTS HI-LITER 245G  
**JCL LODESTAR 27L**  
LOGAN'S CHEERLEADER 280G

WADDLES COBALT 3106  
TNUH MISS C245  
COLE FIRST DOWN 46D  
TTCC CONFIDENCE MAKER  
N BAR EMULATION EXT  
SUMMITCREST ERICA 2B40  
UMF CAVAN OF WYE 7915  
LOUP RIVER ENCHANTRESS 00

SUMMITCREST EXT 1J67  
**LOUP RIVER ENCHANGRESS 24**  
LOUP RIVER ENCHANTRESS 26

	CE	BW	WW	YW	MA	CM	SC	DC	CW	RE	YG	MS	SMI
EPDs	13	-0.6	47	100	21	6	-	-	30	-0.24	0.39	0.31	52
	18	34	23	19	18	18	-	-	P	P	P	P	-

**A.I. 6.9.09 to LVLS Top Criteria. P.E. 6.13.09 - 8.17.09 to PBRS 418U.**

Double homozygous is this Lim-Flex female sired by the multiple trait leader JCL Lodestar 27L. This combination of calving ease and growth EPD's make 78U a valuable asset to the Limousin breed. In addition to those superb traits she has a .31 for marbling and a 52 for SMTI.

**PBRS Ula 809U****Lot 66**PB Limousin (100/88.2) Cow  
NPF 191490503.14.08  
Homozygous PolledPBRS 809U  
Homozygous Black

GPFF BLAQUE RULON  
**DHVO ACE 128R**  
AMY JO DHAN 20L

BLACK DIAMOND  
QUAIL RUN RAMONA BP  
BLACK CAT DHAN 152G  
GPFF AMBER JO  
WULF'S COUNT DOWN 9251C  
CANE RIDGE DAPHNE 011D  
COLE FIRST DOWN 46D  
WULF'S MANDARIN 1121A

EXLR DAKOTA 353G  
**MAGS MAIZIE**  
MAGS GO IN STYLE

	CE	BW	WW	YW	MA	CM	SC	DC	CW	RE	YG	MS	SMI
EPDs	4	3.3	53	92	28	3	0.9	10	11	0.40	-0.08	-0.07	44
	P	P	P	P	P	P	P	P	P	P	P	P	-

**A.I. 6.2.09 to EF Main Stay 541M. P.E. 6.13.09 - 8.17.09 to PBRS 418U.**

Sired by DHVO Ace 128R is this homozygous black and homozygous polled female. She is long sided, big hipped and fancy fronted. 809U has a 53 for weaning EPD, 92 for yearling EPD and a 28 for milk. The mating to EF Main Stay should produce a very competitive product for her new owner.

**PBRS Ulema 855U****Lot 65**PB Limousin (100/89.3) Cow  
NPF 191700004.20.08  
Double PolledPBRS 855U  
Double Black

GPFF BLAQUE RULON  
**DHVO DEUCE 132R**  
AMY JO DHAN 20L

BLACK DIAMOND  
QUAIL RUN RAMONA BP  
BLACK CAT DHAN 152G  
GPFF AMBER JO  
MAYS BLACK JET  
LVLS REBECA  
CHAZ FIRST CHOICE 6004F  
SIVL SABLE COOKIE 381E

LVLS POLLED BLACK JACK  
**MAGS MAE**  
MAGS JODI

	CE	BW	WW	YW	MA	CM	SC	DC	CW	RE	YG	MS	SMI
EPDs	3	2.2	55	96	21	2	0.9	20	54	0.70	0.03	-0.07	44
	16	33	28	16	13	14	12	P	P	P	P	P	-

**A.I. 7.8.09 to LVLS Top Criteria. P.E. 7.14.09 - 8.17.09 to MAGS Tobacco 1555T.**

Sired by the many time champion DHVO Deuce 132R and out of a nice LVLS Polled Black Jack cow is 855U who is double black and double polled. She has a 55 weaning EPD and a .70 for REA. This female is loaded with performance, muscle and is long and strong down her top.

**26** PROOF of PROGRESS



**LOT 67 -  
PBRS Upper Hand**



**LOT 68 -  
PBRS Una 829U**

**PBRS Upper Hand** Lot **67**

Lim-Flex (75/67.3) Cow 04.21.08 PBRS 798U  
LFF 1910390 Homozygous Polled Homozygous Black

LVLS SECRET WEAPON 4408K LVLS FARMER 4G  
**AUTO DOLLAR GENERAL 122R** LVLS 408H  
 AUTO KYRIA 232K AUTO HACKETT 702H  
 WULFS HAPPINESS 8136H  
 DOUBLE G MARKSMAN 8776 DOUBLE G MARKSMAN  
**MAGS PHOEBE 798P** MISS DOUBLE G 8776  
 ROYAL HIGHLITE DRL 182H CANE RIDGE POLL STACKER  
 WULFS FRUITFUL 6052F

	CE	BW	WW	YW	MA	CM	SC	DC	CW	RE	YG	MS	\$MI
EPDs	7	-0.3	58	104	28	4	0.2	40	-	0.32	0.15	0.23	55
	18	P	P	P	P	P	P	P	-	P	P	P	-

A.I. 5.21.09 to EF Smack Down. P.E. 6.13.09 - 8.17.09 to PBRS 418U.

Sired by the trait leading herd sire AUTO Dollar General 122R is 798U who is double homozygous. This 75% Lim-Flex prospect has a 104 for yearling EPD, a 27 for milk, and a 55 for SMTI. She is long topped, angular over her shoulder and loose middled. Her dam is the MAGS Phoebe 798P cow that is a great producing female for our program.

**BISK Una 829U** Lot **68**

Lim-Flex (62/56.1) Cow 03.27.08 PBRS 0829U  
LFF 1911414 Homozygous Polled Homozygous Black

JCL LODESTAR 27L HUNTS HI-LITER 245G  
**MAGS REMOTE** LOGAN'S CHEERLEADER 80G  
 MAGS 13M MAGS JUMANJI  
 WK QUEEN LASSIE 0332  
**SCC NETTIE 830N** GPF BLAQUE RULON BLACK DIAMOND  
 FOUNDATION COW QUAIL RUN RAMONA BP

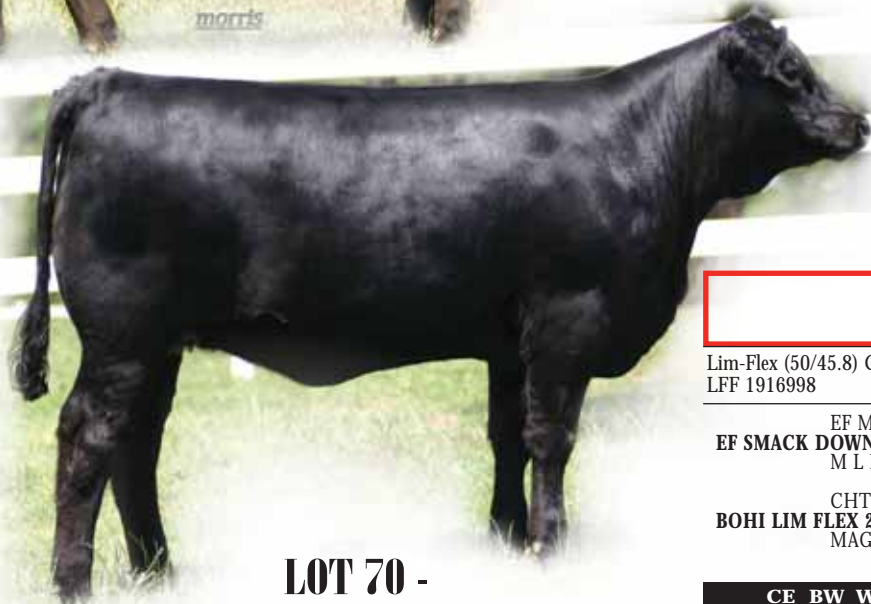
	CE	BW	WW	YW	MA	CM	SC	DC	CW	RE	YG	MS	\$MI
EPDs	10	-0.1	51	9	21	3	0.7	15	28	0.29	0.09	0.06	47
	P	31	25	15	11	P	13	P	P	P	P	P	-

A.I. 7.09.09 to Wulf's Sirloin. P.E. 7.14 - 8.17.09 to MAGS 1555T.

You are going to love this purebred daughter of DHVO Deuce. She is super clean fronted, long and level topped and very eye appealing. We really admire the profile and balance of this top female.



**LOT 69 -  
PBRS Umi 849U**



**LOT 70 -  
PBRS Uif 853U**

**PBRS Umi 849U** *Lot 69*

Lim-Flex (50/45.8) Cow 04.10.08 PBRS 849U  
LFF 1916998 Homozygous Polled Homozygous Black

EF SMACK DOWN 764S EF MAIN STAY 541M AUTO BLACK DAKOTA 129J  
M L PRUDENCE 427 EXLR 231J  
V A R GATEWAY 4101  
M L PRUDENCE 9014  
YKCC POLLED NORTHERN 204B  
BOHI LIM FLEX 21P CHTT 34U  
MAGS4329K R R SCOTCHCAP 9440

	CE	BW	WW	YW	MA	CM	SC	DC	CW	RE	YG	MS	SMI
EPDs	7	-0.6	42	76	22	1	0.1	-	4	-0.13	0.11	0.07	44
	P	20	22	11	10	P	06	-	P	P	P	P	-

**A.I. 6.27.09 to MAGS Unloosen. P.E. 7.10.09 - 8.17.09 to PBRS 418U.**

Sired by EF Smack Down is this double black and double polled 50% Lim-Flex female. She balances up really nice with her EPD's, she is long sided, clean in her neck and head, long hipped and big footed. 849U will make a nice replacement female with unlimited potential in the pasture.

**PBRS Umut 843U** *Lot 71*

Lim-Flex (50/44.4) Cow 04.07.08 PBRS 843U  
LFF 1916997 Homozygous Polled Homozygous Black

EF SMACK DOWN 764S EF MAIN STAY 541M AUTO BLACK DAKOTA 129J  
M L PRUDENCE 427 EXLR 231J  
V A R GATEWAY 4101  
M L PRUDENCE 9014  
GPF BLAQUE RULON BLACK DIAMOND  
KRVN NEVER AGAIN 381N QUAIL RUN RAMONA BP  
KRVN 016K DAVIS NEW TREND 8134  
FOUNDATION COW

	CE	BW	WW	YW	MA	CM	SC	DC	CW	RE	YG	MS	SMI
EPDs	7	-0.7	45	84	23	1	0.1	-	4	-0.06	0.13	0.03	44
	P	30	24	10	11	P	7	-	P	P	P	P	-

**A.I. 6.18.09 to Wulf's Sirloin. P.E. 7.10.09 - 8.17.09 to PBRS 418U.**

Double black and double polled and sired by EF Smack Down and out of a GPF Blaque Rulon dam. She has a -.7 for BW, a 84 for yearling EPD and a 23 for milk. This female is stout made, soggy middled and has a nice disposition.

**PBRS Uif 853U** *Lot 70*

Lim-Flex (75/66.8) Cow 04.18.08 PBRS 853U  
LFF 1916999 Homozygous Polled Homozygous Black

CLLL NEW DIRECTION 394P GPF BLAQUE RULON BLACK DIAMOND  
PRRK EXTRA BLAQUE STAR QUAIL RUN RAMONA BP  
QUAIL RUN HI-LITER 245G  
EXLR QUEEN 143R EXLR RIGHT ON TIME 106J QUAIL RUN GAYLE BP  
WULF'S COUNT DOWN 9251C  
EXLR QUEEN 1004M EXLR 516G  
BON VIEW NEW DESIGN 1407  
EXLR 511G

	CE	BW	WW	YW	MA	CM	SC	DC	CW	RE	YG	MS	SMI
EPDs	3	3.7	53	91	27	1	0.6	18	20	0.25	0.07	0.12	50
	P	32	27	17	11	P	P	P	P	P	P	P	-

**A.I. 6.17.09 to PBRS Take This. P.E. 7.10.09 - 8.17.09 to PBRS 418U.**

Sired by CLLL New Direction 394P is this 75% Lim-Flex prospect. She is double homozygous, has a 53 for weaning weight EPD, a 27 for milk and a .12 for marbling. 853U is wide down her top, strong in her fore arm, deep in her rib and low maintenance.





# PBRS ROUGH RIDER Daughters



**LOT 72 -  
PBRS 658U**



**LOT 73 -  
PBRS 468U**

**PBRS 658U**

**Lot 72**

Lim-Flex (50/44.0) Cow 05.09.08 PBRS 658U  
LFF 1919154 Homozygous Polled Double Black

MAGS KABOOM EXLR DAKOTA 353G  
**PBRS ROUGH RIDER 596R** MAGS GO IN STYLE  
LYLL BLACK VERDICT 828G JCL BLACK OUT  
D&M MISS DEW DROP 488C  
SUMMITCRESTHIGHPRIME 0H29 GARDENS PRIME TIME  
**BT VIXON 414N** SUMMITCREST MISSIE 2F55  
BT VIXON 15J B T FREEWAY 91F  
BT VIXON 286E

	CE	BW	WW	YW	MA	CM	SC	DC	CW	RE	YG	MS	SMI
EPDs	4	1.1	41	78	29	1	0.3	-	-	-	-	-	-
	12	32	25	12	12	11	05	-	-	-	-	-	-

**A.I. 6.27.09 to MAGS Unloosen. P.E. 7.10.09 - 8.17.09 to MAGS Unmasked Man 4613U.**

Double black and homozygous polled and very attractive. 658U is beautiful from the profile, she ties in nice in her neck and shoulder, is long down her top and very stout in her stance. This prospect also has a 29 for her milk EPD.

**PBRS 468U**

**Lot 73**

Lim-Flex (50/44.0) Cow 04.20.08 PBRS 468U  
LFF 1919146 Homozygous Polled Double Black

MAGS KABOOM EXLR DAKOTA 353G  
**PBRS ROUGH RIDER 596R** MAGS GO IN STYLE  
LYLL BLACK VERDICT 828G JCL BLACK OUT  
D&M MISS DEW DROP 488C  
BT TRAVELER 132K SITZ TRAVELER 043  
**BT ROSE 497N** BT EVERELDA ENTENSE 57D  
COCHANGUS ROSE J3 COCHANGUS TRAVELER 382  
COCHANGUS ROSE 8127

	CE	BW	WW	YW	MA	CM	SC	DC	CW	RE	YG	MS	SMI
EPDs	5	0.7	41	75	27	1	0.4	-	-	-	-	-	-
	11	32	25	11	12	10	5	-	-	-	-	-	-

**A.I. PBRS Upper Echelon 820H.P.E. 7.10.09 - 8.17.09 to MAGS Unmasked Man 4613U.**

Sired by PBRS Rough Rider 596R is this 50% Lim-Flex female the is homozygous polled and double black. 468U has a 27 for milk and adequate growth EPD's. 6109, a maternal sister of this powerful brood cow prospect sold in last years sale as a highlight to the cow-calf pair section. Her bull calf, PBRS Upper Echelon was a top seller and is now a new P Bar S and Buford Ranches herd sire.

**PBRS 528U**

**Lot 74**

Lim-Flex (50/44.0) Cow 05.02.08 PBRS 528U  
LFF 1919150 Homozygous Polled Homozygous Black

MAGS KABOOM EXLR DAKOTA 353G  
**PBRS ROUGH RIDER 596R** MAGS GO IN STYLE  
LYLL BLACK VERDICT 828G JCL BLACK OUT  
D&M MISS DEW DROP 488C  
HOMEACRES TRAVELER A27 C R TRAVELER 574  
**HOMEACRES EDWINA D59** OCC REVOLUTION ROSE 850F  
HOMEACRES EDWINA 969 N BAR EMULATION EXT  
1BHOMEACRES EDWINA J747

	CE	BW	WW	YW	MA	CM	SC	DC	CW	RE	YG	MS	SMI
EPDs	3	1.3	45	86	24	0	0.4	-	-	-	-	-	-
	11	31	24	11	11	10	05	-	-	-	-	-	-

**A.I. 6.16.09 to LVLS Top Criteria. P.E. 7.10.09 - 8.17.09 to MAGS Unmasked Man 4613U.**

This double homozygous cow prospect is sired by PBRS Rough Rider 596R. This Lim-Flex female has a 86 for yearling EPD, and a 24 for milk. She deep in her fore and rear rib, easy in her condition and will make a nice brood cow prospect.

# PBRS NEXT GREAT Daughters



## LOT 75 - PBRS 478U

### PBRS 478U Lot 75

Lim-Flex (50/44.3) Cow 04.27.08 PBRS 478U  
LFF 1919147 Homozygous Polled Homozygous Black

**PBRS NEXT GREAT 554R** KRVN NASKAR 013N GPFf BLAQUE RULON  
MAGS NEXT DAY WL JU JU GAL 149J  
AUTO BLACK DAKOTA 129J  
R P BUSHWACKER 3 944 AUTO NATASHA 273G  
**SEDGWICKS PRIDE EVER 7102** R P 3RD BUSHWACKER  
R P NEW DESIGN MISS JUICE  
KWCC MISS PRIDE EVER 7109 SEDGWICKS REBAR  
W C C MISS PRIDE EVER 264

CE	BW	WW	YW	MA	CM	SC	DC	CW	RE	YG	MS	\$MI
EPDs 10	-2.2	43	87	24	4	0.5	-	3	-0.28	0.17	0.10	45
12	31	25	12	11	10	06	-	P	P	P	P	-

A.I. 6.15.09 to MAGS Unloosen. P.E. 7.10.09 - 8.17.09 to PBRS 418U.

Homozygous black and homozygous polled and out of a nice KRVN Naskar son, PBRS Next Great 554R. 478U has a -2.2 for birth weight, a 87 for yearling weight, a 24 on milk and a .10 for marbling. This strong topped female is deep ribbed, level hiped and very fancy in her profile.

### PBRS 538U Lot 77

Lim-Flex (50/44.3) Cow 05.03.08 PBRS 538U  
LFF 1919151 Homozygous Polled Double Black

**PBRS NEXT GREAT 554R** KRVN NASKAR 013N GPFf BLAQUE RULON  
MAGS NEXT DAY WL JU JU GAL 149J  
AUTO BLACK DAKOTA 129J  
MC CUMBER 204 MR WIX 920 AUTO NATASHA 273G  
MR WIX OF MC CUMBER 204  
**SEDGWICKS PRIDE 7984** MISS WIX 298 OF MC CUMBER  
O C C BACKSTOP 888B  
SEDGWICKS PRIDE 7987 SEDGWICKS PRIDE 8904

CE	BW	WW	YW	MA	CM	SC	DC	CW	RE	YG	MS	\$MI
EPDs 7	1.3	49	96	25	4	0.5	-	12	-0.10	0.13	0.02	45
11	32	25	12	10	10	06	-	P	P	P	P	-

A.I. 6.16.09 to Wulf's Titus. P.E. 7.10.09 - 8.17.09 to PBRS 418U.

Sired by PBRS Next Great 554R is this double black and homozygous polled female. She has a 96 for yearling EPD and a 25 for milk. 538U in long down her spine, smooth over her tail head and sound on her feet and legs. This female has super potential as a replacement female for any program. A maternal sister 257T sold in the Counsil Family spring '09 sale for \$9,750.

### PBRS 228U Lot 76

Lim-Flex (50/44.3) Cow 03.20.08 PBRS 228U  
LFF 1919135 Double Polled Double Black

**PBRS NEXT GREAT 554R** KRVN NASKAR 013N GPFf BLAQUE RULON  
MAGS NEXT DAY WL JU JU GAL 149J  
AUTO BLACK DAKOTA 129J  
SUMMITCRESTHIGHPRIME 0H29 AUTO NATASHA 273G  
GARDENS PRIME TIME  
**BT CHLOE 70R** SUMMITCREST MISSIE 2F55  
BT CHLOE 420N SITZ ALLIANCE 8199  
BT CHLOE 62K

CE	BW	WW	YW	MA	CM	SC	DC	CW	RE	YG	MS	\$MI
EPDs 12	-2.8	34	75	22	4	0.3	-	6	-0.11	0.08	-0.01	39
12	31	25	12	10	11	06	-	P	P	P	P	-

A.I. 5.21.09 to PBRS Take This. P.E. 6.13.09 - 8.17.09 to PBRS 418U.

Double black and double polled is this nice cow prospect. Her EPD's are consistent with calving ease, good performance and milk and adequate carcass traits. This Lim-Flex female is broody and moderate framed and the easy keeping kind. A maternal sister sold in last years sale as a highlight bred Limflex. Her dam, BT Chloe 70R stems from a powerful Angus cow family sired by the well known Summitcrest High Prime 0429

### PBRS 548U Lot 78

Lim-Flex (50/44.3) Cow 05.03.08 PBRS 548U  
LFF 1919152 Homozygous Polled Homozygous Black

**PBRS NEXT GREAT 554R** KRVN NASKAR 013N GPFf BLAQUE RULON  
MAGS NEXT DAY WL JU JU GAL 149J  
AUTO BLACK DAKOTA 129J  
R P BUSHWACKER 3 944 AUTO NATASHA 273G  
R P 3RD BUSHWACKER  
**SEDGWICKS ERICA 7624** R P NEW DESIGN MISS JUICE  
SEDGWICKS ERICA 7627 HYLINE SECRET AGENT 122  
SEDGWICKS PRIDE 2245

CE	BW	WW	YW	MA	CM	SC	DC	CW	RE	YG	MS	\$MI
EPDs 7	-0.5	48	96	21	4	0.5	-	6	-0.11	0.13	0.02	44
12	30	24	12	11	10	06	-	P	P	P	P	-

A.I. 7.5.09 to EF Smack Down. P.E. 7.10.09 - 8.17.09 to PBRS 418U.

This double homozygous 50% Lim-Flex female is really nice. She combines great performance traits with calving ease while not giving up maternal and carcass traits. Phenotypically she balances up very nicely, is attractive in her profile and sound in her structure.



**PBRS 578U****Lot 79**Lim-Flex (50/44.3) Cow  
LFF 1919153 05.03.08  
Homozygous Polled PBRS 578U  
Double Black

<b>PBRS NEXT GREAT 554R</b>	KRVN NASKAR 013N MAGS NEXT DAY	GPF BLAQUE RULON WL JU JU GAL 149J AUTO BLACK DAKOTA 129J AUTO NATASHA 273G
<b>BT ELBA 776N</b>	HARB NUGGET 760 J H BT ELBA 450H	G D A R GOLD NUGGET 766 HARB JUANADA ERICA E71 JH WK SLEEP TIGHT BT ELBA 51E

	CE	BW	WW	YW	MA	CM	SC	DC	CW	RE	YG	MS	SMI
EPDs	9	-0.3	44	93	27	4	0.5	-	10	-0.20	0.20	0.09	45
	11	32	25	12	10	10	06	-	P	P	P	P	-

**P.E. 7.10.09 - 8.17.09 to PBRS 418U.**

Here is one of another out of a great set of PBRS Next Great 554R daughter. 578U in double black and homozygous polled. She has a -0.4 for birth weight, a 93 for yearling weight and a 27 for milk. Here is a nice genetic package that combines the best that Lim-Flex has to offer.

# KRVN PURSUIT OF GOLD Daughters

**PBRS 458U****Lot 81**Lim-Flex (50/45.1) Cow  
LFF 1919145 04.18.08  
Homozygous Polled PBRS 458U  
Homozygous Black

<b>KRVN PURSUIT OF GOLD 137P</b>	JCL LODESTAR 27L LFL LACY 1007L	HUNTS HI-LITER 245G LOGAN'S CHEERLEADER 280G MINE POLLED DRYDOCK 004H ALAW ELIZABETH 21E
<b>HOMEACRES LAURIE D51</b>	HOMEACRES PLATINUM 723 HOMEACRES LAURIE J984	G D A R OSCAR 711 HOMEACRES HANA 103 V R S TRAVELER 9375 HOMEACRES RDJ LAURIE 518

	CE	BW	WW	YW	MA	CM	SC	DC	CW	RE	YG	MS	SMI
EPDs	10	-1.8	35	71	23	5	0.2	-	25	-0.10	0.23	0.18	45
	12	32	25	10	11	11	05	-	P	P	P	P	-

**A.I. 6.18.09 to WLR Direct Hit. P.E. 7.10.09 - 8.17.09 to MAGS Unmasked Man 4613U.**

Double homozygous and out of KRVN Pursuit of Gold 137P ( a JCL Lodestar 27L son) is 458U. She has a -1.8 for birth weight, a 23 for milk and a .18 for marbling. This prospect is wide in her hip, loose in her structure and has plenty of volume.

**PBRS 218U****Lot 83**Lim-Flex (50/45.1) Cow  
LFF 1919134 03.20.08  
Homozygous Polled PBRS 218U  
Homozygous Black

<b>KRVN PURSUIT OF GOLD 137P</b>	JCL LODESTAR 27L LFL LACY 1007L	HUNTS HI-LITER 245G LOGAN'S CHEERLEADER 280G MINE POLLED DRYDOCK 004H ALAW ELIZABETH 21E
<b>SEDGWICKS BARBARA 7044</b>	G A R PRECISION 6769 SEDGWICKS BARBARA 7043	GAR PRECISION 1680 G A R 6807 TRAVELER 673 TC INFLENCE SEDGWICKS BARBARA 309

	CE	BW	WW	YW	MA	CM	SC	DC	CW	RE	YG	MS	SMI
EPDs	13	-3.6	34	80	23	5	0.2	-	29	0.04	0.20	0.18	45
	12	32	25	12	11	11	05	-	P	P	P	P	-

**PBRS 688U****Lot 80**Lim-Flex (50/44.3) Cow  
LFF 1919156 05.11.08  
Homozygous Polled PBRS 688U  
Double Black

<b>PBRS NEXT GREAT 554R</b>	KRVN NASKAR 013N MAGS NEXT DAY	GPF BLAQUE RULON WL JU JU GAL 149J AUTO BLACK DAKOTA 129J AUTO NATASHA 273G
<b>SEDGWICKS ERICA 1242</b>	G A R PARAMOUNT SEDGWICKS ERICA 1240	GAR PRECISION 1680 G A R EXT 2114 W C C POWERSTROKE 165 SEDGWICKS ERICA 124

	CE	BW	WW	YW	MA	CM	SC	DC	CW	RE	YG	MS	SMI
EPDs	10	-1.0	47	92	25	4	0.4	-	16	-0.18	0.32	0.15	47
	12	31	24	12	10	11	06	-	P	P	P	P	-

**P.E. 7.10.09 - 8.17.09 to PBRS 418U.**

Double black and homozygous polled is this 50% Lim-Flex female. She has very good EPD's highlighted with a 10 for CED, a 92 for yearling weight, a 25 for milk and a .15 for marbling. Phenotypically 688U is long and wide down her top, deep flanked and sound footed.

**PBRS 308U****Lot 82**Lim-Flex (50/45.1) Cow  
LFF 1919137 03.30.08  
Homozygous Polled PBRS 308U  
Homozygous Black

<b>KRVN PURSUIT OF GOLD 137P</b>	JCL LODESTAR 27L LFL LACY 1007L	HUNTS HI-LITER 245G LOGAN'S CHEERLEADER 280G MINE POLLED DRYDOCK 004H ALAW ELIZABETH 21E
<b>SEDGWICKS BARBARA 2867</b>	GDAR SVF TRAVELER 234D SEDGWICKS BARBARA 8677	TRAVELER 124 G D A R GDAR FOREVER LADY 718 H A QUANTUM 4100 SEDGWICKS BARBARA 2875

	CE	BW	WW	YW	MA	CM	SC	DC	CW	RE	YG	MS	SMI
EPDs	11	-1.5	46	88	29	5	0.3	-	25	-0.10	0.20	0.14	47
	13	33	26	12	13	12	05	-	P	P	P	P	-

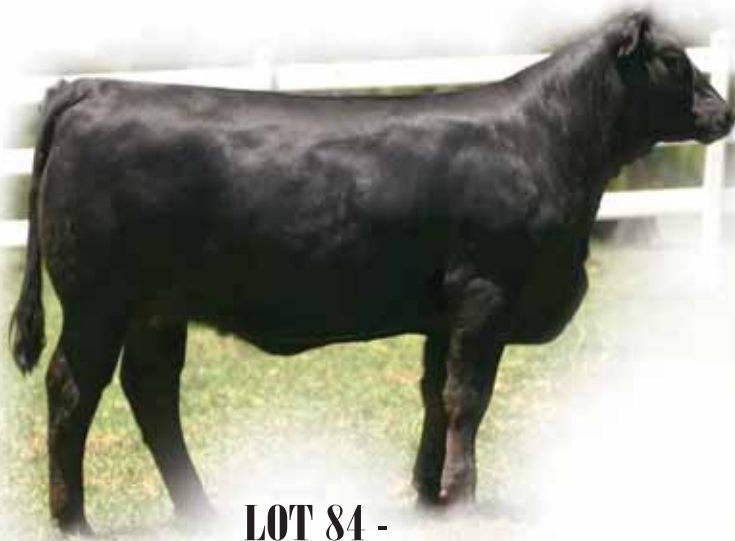
**A.I. 5.28.09 to SYES User Friendly. P.E. 6.13.09 - 8.17.09 to PBRS 418U.**

Homozygous black and homozygous polled and really good. This female has a -1.5 for birth weight, good performance EPD's, a 29 for milk and a .14 for marbling. 308U has the potential to be a super cow, be low maintenance and raise a great calf.

**A.I. 5.28.09 to SYES User Friendly. P.E. 6.13.09 - 8.17.09 to PBRS 418U.**

PBRS 218U is a double homozygous replacement prospect that is a 50% Lim-Flex. She has a -3.6 for her birth weight EPD, good performance number and adequate milk and carcass EPD's. This female is deep in her fore rib, stout ended and has easy going disposition.





**LOT 84 -  
PBRs Ummi 860U**



**LOT 85 -  
PBRs Usually First 859U**

**PBRs Ummi 860U** *Lot 84*

PB Limousin (100/86.5) Cow 05.01.08 PBRs 860U  
NPF 1917001 Homozygous Polled Double Black

GPF BLAQUE RULON BLACK DIAMOND  
**RLAY RULER 13N** QUAIL RUN RAMONA BP  
MISS NATRONA 10D LKCC TOMAHAWKS TOUCHDOWN  
HONY POLLED QUEEN 903X  
DJ ESSENCE COLE FIRST DOWN 46D  
**WULF'S COUNT DOWN 9251C** EXLR ECLIPSE 7231N  
EXLR 507E EXLR 568G

	CE	BW	WW	YW	MA	CM	SC	DC	CW	RE	YG	MS	\$MI
EPDs	7	-0.2	36	69	18	3	0.4	-	12	0.46	-0.13	-0.08	39
	13	31	25	12	12	12	10	-	P	P	P	P	-

**A.I. 6.15.09 to LVLS Top Criteria. P.E. 7.14.09 - 8.17.09 to MAGS Tobacco 1555T.**

This double black and double polled female is sired by RLAY Ruler and out of a DJ Gentleman In Black cow. This purebred female has a -0.2 birth weight EPD and a .46 for REA. This wide topped female is smooth in her shoulder and soft in her pastern. She is long striding and big footed.

**PBRs 790T** *Lot 86*

PB Limousin (100/88.3) Cow 10.27.07 PBRs 790T  
NPF 1906179 Double Polled Double Black

GPF BLAQUE RULON BLACK DIAMOND  
**RLAY RULER 13N** QUAIL RUN RAMONA BP  
MISS NATRONA 10D LKCC TOMAHAWKS TOUCHDOWN  
HONY POLLED QUEEN 903X  
JCL BLACK OUT LKCC TOMAHAWKS TOUCHDOWN  
**LYLL BLACK VERDICT 828G** JCL MADELINE  
D&M MISS DEW DROP 488C POLLED FRONT RANGE 117Y  
D&M MISS LUCKY LADY 283A

	CE	BW	WW	YW	MA	CM	SC	DC	CW	RE	YG	MS	\$MI
EPDs	3	1.5	37	71	21	0	0.3	-	10	0.44	-0.10	-0.15	36
	15	33	26	13	13	14	10	-	P	P	P	P	-

**A.I. 5.28.09 to PBRs Take This. P.E. 6.13.09 - 8.17.09 to PBRs 418U.**

790T is a purebred female that is double black and double polled and sired by RLAY Ruler 13N. She has nice EPD's, is heavy muscled, low maintenance and broody in her look. PBRs Trinity 790T will make a super replacement female and one that anyone would be proud to own.

**PBRs Usually First 859U** *Lot 85*

PB Limousin (100/88.7) Cow 04.28.08 PBRs 859U  
NPF 1909346 Homozygous Polled Homozygous Black

LVLS FARMER 4G COLE FIRST DOWN 46D  
**LVLS SECRET WEAPON 4408K** LVLS JENI 601V  
LVLS 408H LVLS POLLED JUSTICE 0601E  
LVLS MISS STABILIZER 1408E  
PBRs BLACK DAKOTA 001 EXLR DAKOTA 353G  
**PBRs JUST AFTER 514R** TRAK GLORY  
MAGS JUST AFTER DARK LVLS POLLED JUSTICE 0601E  
MAGS DAUGHTER OF DARKNESS

	CE	BW	WW	YW	MA	CM	SC	DC	CW	RE	YG	MS	\$MI
EPDs	5	4.2	62	104	33	10	0.9	-	26	0.30	-0.02	0.04	50
	20	34	23	18	17	19	P	-	P	P	P	P	-

**A.I. 6.23.09 to LVLS Top Criteria. P.E. 7.14.09 - 8.17.09 to MAGS Tobacco 1555T.**

Sired by the huge numbered LVLS Secret Weapon is 859U who is homozygous black and homozygous polled. She has a 62 for weaning weight, a 104 for yearling weight, has a huge milk number at a 33 and a SMTI of 50. This thick ended female is strong topped and level hipped and has tremendous earning potential.

**PBRs 398U** *Lot 87*

Lim-Flex (50/45.4) Cow 04.11.08 PBRs 398U  
LFF 1919141 Double Polled Homozygous Black

GPF BLAQUE RULON BLACK DIAMOND  
**CARROUSELS PEAK POWER** QUAIL RUN RAMONA BP  
HC CHERISH HC POLLED MANHATTAN  
HACO MISTY MORNING  
ROYAL WORKHORSE 001 SEDGWICKS WORKMAN 3706  
**SEDGWICKS RUBY 3349** CEDARCREST ERICA 518  
SEDGWICKS RUBY 3499 W C C POWERSTROKE 165  
SEDGWICKS RUBY 3135

	CE	BW	WW	YW	MA	CM	SC	DC	CW	RE	YG	MS	\$MI
EPDs	6	0.4	41	78	22	0	0.4	-	25	0.24	0.19	-0.01	40
	17	35	29	17	13	17	11	-	P	P	P	P	-

**A.I. 6.27.09 to LVLS Top Criteria. P.E. 7.10.09 - 8.17.09 to PBRs 418U.**

Homozygous black and double polled is 398U who is sired by Carrouseles Peak Power. She has a 22 for milk and a .24 for REA. This female is long topped, stands on a big foot and is fluent in her movement. This is a really nice 50% Lim-Flex cow prospect that is being offered by P Bar S Ranch. This female stems from a great Angus cow 3349 and is backed with a pedigree of OCC Backstop and EXT on her maternal side.



# SPRING PAIRS



**LOT 88 -  
Bobbie Joe 424P**



**LOT 89 -  
PBRs Twinkie 731T**

## Bobbie Joe 424P

Lot 88

PB Limousin (100/91.0) Cow 03.21.04 PBRs 424P  
NPF 1776885 Double Polled Double Black

EXLR DAKOTA 353G WULF'S COUNT DOWN 9251C  
**PBRs BLACK DAKOTA 001** CANE RIDGE DAPHNE 011D  
TRAK GLORY WULF'S HOME RUN 9226AA  
WLCC BLACK PERSUASION  
MAGS LEILA WULFS GAGE 5158G WULFS ENDURANCE 3097E  
MAGS CAFFEINE FREE WULFS EMBER 5158E  
PLLP POLLED WEBSTER 30X  
MK UPSY IN COMMAND

	CE	BW	WW	YW	MA	CM	SC	DC	CW	RE	YG	MS	SMI
EPDs	2	3.6	46	85	20	1	0.4	-	22	0.58	-0.15	-0.12	41
	26	28	23	17	24	25	10	-	38	34	34	33	-

**P.E. 7.14.09 - 8.19.09 to RLAY Ruler 13N.**

Double black and double polled is this daughter of PBRs Black Dakota 001. This purebred female is long down her top, big hipped, deep sided and sound in her movement. She has a 84 for yearling EPD and a .58 for REA. She sells with a January heifer calf sired by MAGS Sasquatch that has nice EPD's and will make a nice show heifer prospect.

**LOT 88A - PBRs Wanted 901W.** PB Limousin (100/90.8) cow, double polled, double black, 01.05.09, PBRs 901W, NPF 1933810. Sired by MAGS Sasquatch. CE: 7; BW: 2.7; WW: 41; YW: 81; MA: 24; CM: 3; SC: 0.2; CW: 19; RE: 0.45; YG: -0.07; MS: -0.04; SMI: 41.

## PBRs Twinkie 731T

Lot 89

PB Limousin (100/88.0) Cow 04.08.07 PBRs 731T  
NPF 1897470 Homozygous Polled Homozygous Black

LVLS SECRET WEAPON 4408K LVLS FARMER 4G  
**AUTO DOLLAR GENERAL 122R** LVLS 408H  
AUTO KYRIA 232K AUTO HACKETT 702H  
WULFS HAPPINESS 8136H  
AUTO BLACK DAKOTA 129J EXLR DAKOTA 353G  
**CARROUSELS PINA COLADA** DFLLC JET SET BPC 34Y  
ELMW GINNIE P58G TCDT MR T.D'S POWER PACK  
ELMW POLLED ECSTASY 67E

	CE	BW	WW	YW	MA	CM	SC	DC	CW	RE	YG	MS	SMI
EPDs	6	1.4	50	102	28	5	0.4	10	32	0.41	0.09	0.04	46
	P	34	30	24	09	P	14	P	P	P	P	P	-

**Left open for immediate transplant.**

This two year old AUTO Dollar General 122R daughter is double homozygous. She has a 50 for weaning EPD and a 102 for yearling weight. Add that performance to a 28 for milk and you have a great producing female. Her dam is the great donor and many time show champion Carrousel's Pina Colada. 731T is long and strong down her top, attractive in her profile and move's fluently off both ends. She sells with a 75% Lim-Flex bull calf sired by PBRs Safe Bet 6123 that is double black and double polled. He has a 25 for milk and a 45 for SMTI.

**LOT 89A - PBRs Willy 970W.** Lim-Flex (75/66.4) bull, double polled, double black, 05.16.09, PBRs 970W, LFM 1933824. Sired by PBRs Safe Bet 6123. CE: 6; BW: -0.1; WW: 47; YW: 93; MA: 25; CM: 2; SC: 0.4; CW: 24; RE: 0.25; YG: 0.13; MS: 0.06; SMI: 45. BW: 78 lbs.





**LOT 90 -  
PBRs She's A Lady**

**PBRs She's A Lady** **Lot 90**

Lim-Flex (50/45.5) Cow 02.23.06 PBRs 604S  
LFF 1855247 Double Polled Homozygous Black

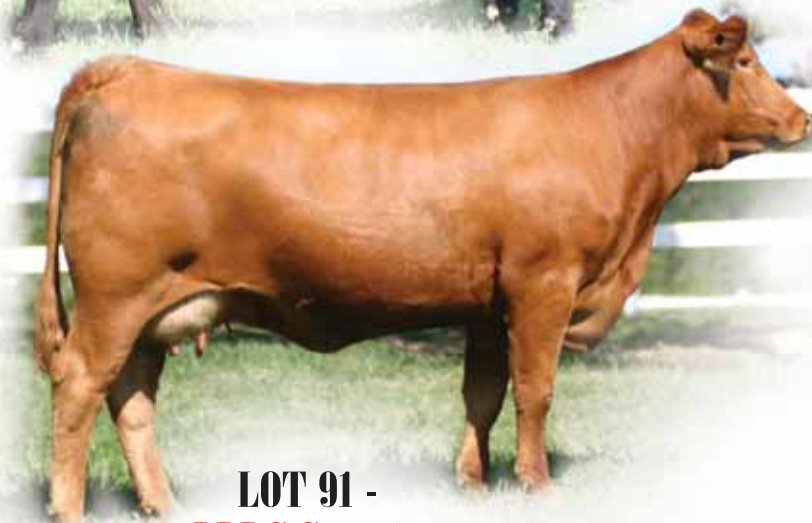
HUNTS HI-LITER 245G WADDLES COBALT 3106  
JCL HI LODE MASTER TIP TNUH MISS C245  
JCLC 155J SPUR TRAVEL MASTER 6092  
FOUNDATION COW  
BLACK DIAMOND  
GPF BLAQUE RULON  
KRVN NICCOLETTE 353N QUAIL RUN RAMONA BP  
KRVN 013K DAVIS NEW TREND 8134  
FOUNDATION COW

	CE	BW	WW	YW	MA	CM	SC	DC	CW	RE	YG	MS	SMI
EPDs	5	1.0	49	91	18	1	0.4	-	11	0.22	0.05	0.05	46
	20	32	25	18	17	18	08	-	35	31	31	31	-

**A.I. 6.25.09 to MAGS Unloosen. P.E. 7.14.09 - 8.19.09 to MAGS 2500T.**

Homozygous black and double polled is this three year old replacement female. She sells bred to the Futurity champion bull MAGS Unloosen and should produce a superb 75% Lim-Flex calf. She has a 91 for yearling EPD, and a .05 for marbling. This female is very deep sided, sound uddered and very easy fleshing. She sells with a April bull calf sired by EF Smack Down 764S that is double black and double polled.

**LOT 90A - PBRs Widetrack 943W.** Lim-Flex (50/44.8) bull, double polled, double black, 04.05.09, PBRs 943W, LFM 1933818. Sired by EF Smack Down 764S. CE: 7; BW: 0.3; WW: 47; YW: 88; MA: 23; CM: 2; SC: 0.1; CW: 5; RE: -0.08; YG: 0.14; MS: 0.09; SMI: 46. BW: 71 lbs.



**LOT 91 -  
PBRs Sweetness**

**PBRs Sweetness** **Lot 91**

PB Limousin (100/90.7) Cow 03.24.06 PBRs 617S  
NPF 1855257 Double Polled Red

AUTO BLACK DAKOTA 129J EXLR DAKOTA 353G  
EF MAIN STAY 541M DFLC JET SET BPC 34Y  
EXLR 231J WULFS GUARDIAN 5074G  
EXLR LUVLY 081F  
MAGS LITTLE BROTHER EXLR DAKOTA 353G  
PBRs DREAM GIRL 0319 DJ ESSENCE  
ALCM DREAM GIRL 176L EXLR POLLED BENCHMARK709G  
WULFS DREAM GIRL 4109D

	CE	BW	WW	YW	MA	CM	SC	DC	CW	RE	YG	MS	SMI
EPDs	7	1.2	35	71	22	3	-0.3	16	-11	0.16	-0.07	-0.08	38
	20	35	28	24	19	19	17	P	P	P	P	P	-

**A.I. 7.12.09 to EXLR Saturn 040S. P.E. 7.14.09 - 8.19.09 to RLAY Ruler 13N.**

Sired by EF Mainstay and out of a MAGS Little Brother dam is this red and double polled purebred female. This three year old is tremendous in her look, she blends nicely in her neck and shoulder, is level in her hip and stout in her stance. She sells with a bull calf that is red and double polled that is sired by PBRs Top Hand 724T.

**LOT 91A - PBRs Whats This 971W.** PB Limousin (100/90.3) bull, double polled, red, 05.13.09, PBRs 971W, NPF 1933825. Sired by PBRs Top Hand 724T. BW: 2.7; WW: 45; YW: 86; MA: 24; SC: 0.3; CW: 17; RE: 0.34; YG: -0.02; MS: -0.06; SMI: 42.

**PBRs Robin 5105R** **Lot 92**

PB Limousin (100/93.0) Cow 11.12.05 PBRs 5105R  
NPF 1838484 Double Polled Red

EXLR DAKOTA 353G WULF'S COUNT DOWN 9251C  
MAGS KABOOM CANE RIDGE DAPHNE 011D  
MAGS GO IN STYLE COLE FIRST DOWN 46D  
WULF'S MANDARIN 1121A  
OTSS BROKER 2124B YKCC TOP LINE 180X  
TRAK'S SOFT WHISPER YKCL MISS VIRGINIAN R103V  
JCL MOLLY TEXS RANGER PRIMO  
SWPL NAVAJO MAIDEN

	CE	BW	WW	YW	MA	CM	SC	DC	CW	RE	YG	MS	SMI
EPDs	5	3.2	39	77	20	5	0.6	4	7	0.37	-0.14	-0.02	42
	31	37	30	21	22	29	19	P	P	P	P	P	-

**A.I. to SYES User Friendly 524U. P.E. 7.14.09 - 8.19.09 to RLAY Ruler 13N.**

This red and double polled MAGS Kaboom daughter is four years old and in the prime of her production. This stout made, easy keeping female does a fantastic job raising a calf and has a nice disposition. She sells with a red and double polled bull calf sired by PBRs Top Hand 724T. This May bull calf an intriguing pedigree and one that I am sure you will want to look at on sale day.

**LOT 92A - PBRs Whitewater 962W.** PB Limousin (100/91.5) bull, double polled, red, 05.02.09, PBRs 962W, NPF 1933821. Sired by PBRs Top Hand 724T. BW: 1.2; WW: 47; YW: 89; MA: 23; SC: 0.7; CW: 26; RE: 0.45; YG: -0.07; MS: -0.03; SMI: 44.





# PBRS She's All That 640S

## Lot 93

PB Limousin (100/90.9) Cow  
NPF 1853680

05.05.06  
Double Polled

PBRS 640S  
Red

<b>RLAY RULER 13N</b>	GPF BLAQUE RULON MISS NATRONA 10D	BLACK DIAMOND QUAIL RUN RAMONA BP LKCC TOMAHAWKS TOUCHDOWN HONY POLLED QUEEN 903X
<b>PBRS TOP LINE 0326</b>	MAGS KABOOM TRAK DOREENA	EXLR DAKOTA 353G MAGS GO IN STYLE YKCC TOP LINE 180X SPITZ JULIEANNE 1908X

	CE	BW	WW	YW	MA	CM	SC	DC	CW	RE	YG	MS	\$MI
EPDs	6	0.5	37	71	20	2	0.3	-	12	0.52	-0.12	-0.13	37
	P	P	P	P	P	P	P	-	P	P	P	P	-

### P.E. 7.14.09 - 8.19.09 to MAGS 2500T.

Sired by RLAY Ruler 13N is this red and double polled three year old female. She has a .5 for birth weight, a 20 on milk and a .52 for REA. This female is sound, bold in her rib and very well balanced for end to end.

**LOT 93A - PBRS Woodsy 968W.** PB Limousin (100/90.4) bull, double polled, black, 05.12.09, PBRS 968W, NPM 1933823. Sired by PBRS Top Hand 724T. BW: 2.7; WW: 46; YW: 86; MA: 23; SC: 0.6; CW: 29; RE: 0.52; YG: -0.06; MS: -0.08; SMI: 41. BW: 78 lbs.

# PBRS Trinity 719T

## Lot 95

PB Limousin (100/78.2) Cow  
NPF 1895831

03.18.07  
Double Polled

PBRS 719T  
Double Black

<b>KRVN PABLO 011P</b>	GPF BLAQUE RULON EXLR MISS HERITAGE 7384L	BLACK DIAMOND QUAIL RUN RAMONA BP EXLR HERITAGE 056H EXLR 189G
<b>MAGS MELISSA 146M</b>	COLE WULF HUNT ROYAL DRL 106K	COLE FIRST DOWN 46D COLE CATALINA 3309C CANE RIDGE BLACK DRAK

	CE	BW	WW	YW	MA	CM	SC	DC	CW	RE	YG	MS	\$MI
EPDs	6	2.8	47	87	19	-2	0.3	14	8	0.57	-0.10	-0.06	43
	18	34	29	22	14	17	15	P	P	P	P	P	-

### A.I. 6.5.09 to Wulf's Titus. P.E. 7.14.09 - 8.19.09 to MAGS Table Tennis 2500T.

Double black and double polled and sired by KRVN Pablo 011P. This first calf heifer has a 47 weaning and a 87 yearling EPD, a 19 for milk and a .57 for REA. Her dam is a moderate framed easy keeping COLE Wulf Hunt daughter in our herd. 719T sells with a very complete double black and double polled Wulf's Nasa heifer calf born in March. 931W has tremendous EPD's highlighted with a 29 for milk.

**LOT 95A - PBRS Wearing A Smile 931W.** PB Limousin (100/83.6) cow, polled, double black, 03.04.09, PBRS 931W, NPR 1933814. Sired by WULF Nasa 1212N. CE: 9; BW: 0.1; WW: 44; YW: 84; MA: 29; CM: 6; SC: 0.7; DC: 21; CW: 10; RE: 0.34; YG: -0.04; MS: 0.02; SMI: 44.

# PBRS Dream Girl 0319

## Lot 97

PB Limousin (100/93.1) Cow  
NPF 1725934

02.13.03  
Double Polled

PBRS 319N  
Black

<b>MAGS LITTLE BROTHER</b>	EXLR DAKOTA 353G DJ ESSENCE	WULF'S COUNT DOWN 9251C CANE RIDGE DAPHNE 011D WULF'S POLLED PROGRESS GOLDENVIEW THERESA GVC486
<b>ALCM DREAM GIRL 176L</b>	EXLR POLLED BENCHMARK709G WULFS DREAM GIRL 4109D	WULFS DAWSON 4421D PMDB ALLIANCE WULF'S CHALLENGER 6044Y WULF'S EDINA 9053X

	CE	BW	WW	YW	MA	CM	SC	DC	CW	RE	YG	MS	\$MI
EPDs	4	2.4	37	67	23	-1	-0.1	6	1	0.29	-0.11	-0.08	39
	26	40	29	23	32	23	19	P	39	35	35	35	-

# PBRS Red Rose 582R

## Lot 94

PB Limousin (100/89.6) Cow  
NPF 1838476

10.17.05  
Double Polled

PBRS 582R  
Red

<b>MAGS KABOOM</b>	EXLR DAKOTA 353G MAGS GO IN STYLE	WULF'S COUNT DOWN 9251C CANE RIDGE DAPHNE 011D COLE FIRST DOWN 46D WULF'S MANDARIN 1121A
<b>PBRS HOLLY 0367</b>	COSC BREKENRIDGE PBRS MOLLYS KA'-WA	COLE FIRST DOWN 46D TUBB STORM BREKEN 299B WULFS DAWSON 4421D JCL MOLLY

	CE	BW	WW	YW	MA	CM	SC	DC	CW	RE	YG	MS	\$MI
EPDs	7	2.1	36	72	15	4	0.7	-	-	-	-	-	-
	28	35	29	17	23	25	16	-	-	-	-	-	-

### A.I. 6.14.09 to SYES User Friendly 524U. P.E. 7.14.09 - 8.19.09 to RLAY Ruler 13N.

PBRS Red Rose 582R is sired by MAGS Kaboom and is double polled. This is a really good female that will earn her keep in the pastures. She is deep middle, sound on her feet and legs and has a quiet temperament.

**LOT 94A - PBRS Welch 951W.** PB Limousin (100/89.8) bull, double polled, black, 04.12.09, PBRS 951W, NPM 1933819. Sired by KRVN Picante 036P. CE: 7; BW: 1.4; WW: 45; YW: 86; MA: 20; CM: 4; SC: 0.6; DC: 1; CW: 22; RE: 0.21; YG: 0.02; MS: -0.04; SMI: 42. BW: 75 lbs.

# PBRS Temptation 723T

## Lot 96

Lim-Flex (75/67.3) Cow  
LFF 1895833

03.26.07  
Homozygous Polled

PBRS 723T  
Homozygous Black

<b>AUTO DOLLAR GENERAL 122R</b>	LVLS SECRET WEAPON 4408K AUTO KYRIA 232K	LVLS FARMER 4G LVLS 408H AUTO HACKETT 702H WULFS HAPPINESS 8136H
<b>KRVN NEVER AGAIN 381N</b>	GPF BLAQUE RULON KRVN 016K	BLACK DIAMOND QUAIL RUN RAMONA BP DAVIS NEW TREND 8134 FOUNDATION COW

	CE	BW	WW	YW	MA	CM	SC	DC	CW	RE	YG	MS	\$MI
EPDs	5	-0.1	45	91	26	2	0.5	7	29	0.39	0.08	0.08	46
	17	34	29	23	11	17	13	P	P	P	P	P	-

### A.I. 5.24.09 to EF Smack Down. P.E. 7.14.09 - 8.19.09 to MAGS Table Tennis 2500T.

Homozygous black and homozygous polled is this female sired by AUTO Dollar General 122R and her dam is sired by GPF Blaques Rulon. This young cow has a 26 for milk and a .08 for marbling. She sells with a March bull calf sired by EF Smack Down that has really good EPD's. 13. Sired by EF Smack Down 764S CE: 7; BW: -1.2; WW: 45; YW: 88; MA: 27; CM: 3; SC: 0.2; CW: 14; RE: 0.01; YG: 0.15; MS: 0.10; SMI: 46. BW: 78 lbs.

**LOT 96A - PBRS Watson 930W.** Lim-Flex (62/55.7) cow, double polled, double black, 03.02.09, PBRS 930W, NPR 1933813. Sired by EF Smack Down 764S. CE: 7; BW: -1.2; WW: 45; YW: 8; MA: 27; CM: 3; SC: 0.2; DC: 14; CW: 0.01; RE: 0.01; YG: 0.15; MS: 0.10; SMI: 46.

### A.I. 7.4.09 to SYES User Friendly 524U. P.E. 7.14.09 - 8.19.09 to RLAY Ruler 13N.

Black and double polled and sired by MAGS Little Brother is this purebred cow that goes back to the great Wulf's Dream Girl 4109D on the bottom side of her pedigree. This cow has a 23 for milk and a moderate birth weight. She sells with a February heifer calf sired by Carrouels Pure Power that is double black and double polled.

**LOT 97A - PBRS Winnie 924W.** PB Limousin (100/91.5) cow, double polled, double black, 02.09.09, PBRS 924W, NPF 1933812. Sired by Carrouels Pure Power. CE: 4; BW: 4.3; WW: 47; YW: 83; MA: 15; CM: 0; SC: 0.4; DC: 4; CW: 16; RE: 0.55; YG: -0.09; MS: -0.11; SMI: 41.



**LOT 98 -  
KRVN Never Again 381N**



**LOT 99 -  
PBRs Tootsie 1735T**

**KRVN Never Again 381N**

**Lot 98**

Lim-Flex (50/44.7) Cow 10.08.03 PBRs 381N  
LFF 1757890 Homozygous Polled Homozygous Black

**GPF BLAQUE RULON** BLACK DIAMOND CANE RIDGE BLACK DRAK  
QUAIL RUN RAMONA BP WULFS DIADEM 4260D  
DOWN LKCC TOMAHAWKS TOUCH-  
**KRVN 016K** DAVIS NEW TREND 8134 AMBL FAVORITE GIRL 36W  
FOUNDATION COW VDAR NEW TREND 47  
VT TRAVELER 6807 Q9

	CE	BW	WW	YW	MA	CM	SC	DC	CW	RE	YG	MS	SMI
EPDs	5	-0.4	37	73	18	-1	0.4	-	9	0.27	0.02	-0.06	39
	24	34	28	19	29	22	14	-	P	P	P	P	-

**A.I. 6.5.09 to EF Smack Down. P.E. 7.14.09 - 8.19.09 to MAGS Table Tennis 2500T.**

Never Again is sired by GPF Blaqué Rulon and is double homozygous. She has a -0.4 for birth weight and has good growth and milk numbers. This 50% Lim-Flex female is very angular, long down her top and has a really nice udder. She sells with a March heifer calf sired by EF Smack Down 764S that is double black and double polled.

**LOT 98A - PBRs Whitney 936W.** Lim-Flex (50/44.4) cow, double polled, double black, 03.27.09, PBRs 936W, LFF 1933816. Sired by EF Smack Down 764S. CE: 7; BW: -0.9; WW: 42; YW: 79; MA: 23; CM: 1; SC: 0.1; CW: 4; RE: -0.06; YG: 0.13; MS: 0.03; SMI: 43.

**PBRs Tootsie 1735T**

**Lot 99**

PB Limousin (100/89.6) Cow 04.11.07 PBRs 1735T  
NPF 1895848 Double Polled Red

**RLAY RULER 13N** GPF BLAQUE RULON BLACK DIAMOND  
MISS NATRONA 10D LKCC TOMAHAWKS TOUCHDOWN  
**PBRs JUST AFTER 514R** PBRs BLACK DAKOTA 001 EXLR DAKOTA 353G  
MAGS JUST AFTER DARK TRAK GLORY  
LVLS POLLED JUSTICE 0601E  
MAGS DAUGHTER OF DARKNESS

	CE	BW	WW	YW	MA	CM	SC	DC	CW	RE	YG	MS	SMI
EPDs	7	0.7	46	79	20	3	0.5	-	13	0.52	-0.09	-0.15	39
	13	32	25	12	10	12	08	-	P	P	P	P	-

**A.I. 7.12.09 to CTCA Buckeye 8261U. P.E. 7.14.09 - 8.19.09 to MAGS Table Tennis 2500T.**

Sired by RLAY Ruler 13N is this red and double polled first calf heifer. This feminine fronted female is very attractive in her profile, square in her hip and is doing a great job in production. She has a 46 for weaning EPD, a 20 for milk and a .52 REA. She sells with a April heifer calf sired by JCL Lodestar 27L. This April baby has a 12 for CED, a 99 for yearling weight and a .03 for marbling.

**LOT 99A - PBRs Woopie 952W.** PB Limousin (100/90.2) cow, double polled, black, 04.12.09, PBRs 952W, NPF 1933820. Sired by JCL Lodestar 27L. CE: 12; BW: -0.1; WW: 52; YW: 99; MA: 20; CM: 8; SC: 0.6; CW: 33; RE: 0.36; YG: 0.09; MS: 0.03; SMI: 46.



# BULLS



**LOT 100 -  
PBRs 108U**



**LOT 101 -  
PBRs UDay 8**

**PBRs 108U**

**Lot 100**

Lim-Flex (50/45.3) Bull 03.12.08 PBRs 108U  
LFM 1919127 Homozygous Polled Double Black

EXLR NEW GENERATION 071M AUTO BLACK DAKOTA 129J  
EXLR LUVLY 084F  
**MAGS SASQUATCH** MAGS FRUITFUL 487M EXLR LIMITED EDITION 765J  
WULFS FRUITFUL 6052F  
HOMEACRES PLATINUM 723 G D A R OSCAR 711  
**HOMEACRES MAY D52** HOMEACRES HANA 103  
HOMEACRES R D J MAY 604 V D A R LUCYS BOY  
PHARAOH 3005

	CE	BW	WW	YW	MA	CM	SC	DC	CW	RE	YG	MS	SMI
EPDs	9	-0.3	36	72	26	3	0.0	-	20	-0.20	0.21	0.15	45
	13	31	20	12	09	12	P	-	P	P	P	P	-

Homozygous polled and double black and sired by MAGS Sasquatch. This herd sire prospect is really stout, long and wide down his top, deep sided and made really nice in his neck and shoulder. This 50% Lim-Flex bull has a 9 for CED, a 26 for milk and a .15 for marbling. Here is a great opportunity to purchase a herd sire that will add uniformity and quality to your cow herd with out sacrificing eye appeal.

**PBRs UDay 8**

**Lot 101**

Lim-Flex (75/62.3) Bull 02.19.08 PBRs 810U  
LFM 1911416 Homozygous Polled Double Black

GPF BLAQUE RULON BLACK DIAMOND  
**CLL NEW DIRECTION 394P** QUAIL RUN RAMONA BP  
PRRK EXTRA BLAQUE STAR HUNTS HI-LITER 245G  
QUAIL RUN GAYLE BP  
EXLR BROADWAY 1023M EXLR BROADWAY 041E  
**EXLR MISS COWCAMP 169R** GREENWAY MISSEMULOUS 717  
EXLR MISS COWCAMP 264M LEACHMAN DIAMONDBACK  
EXLR 556J

	CE	BW	WW	YW	MA	CM	SC	DC	CW	RE	YG	MS	SMI
EPDs	3	3.7	52	91	22	0	0.2	-	14	0.23	0.05	0.20	52
	P	31	26	16	10	P	12	-	P	P	P	P	-

Homozygous polled and double black is this 75% Lim-Flex sired by CLLL New Direction 394P. He has great performance EPDs with a 52 for weaning and a 91 for yearling, a 22 for milk, a .20 for marbling and a SMTI of 52. The combination of genetics in this prospect along with a superior phenotype is sure to catch your eye. This bull is long side, wide based and very complete.  
BW: 89 lbs.; WW: 835 lbs.



**PBRs 58U****Lot 102**Lim-Flex (50/45.3) Bull 03.09.08 PBRs 58U  
LFM 1922879 -- Double Black

**MAGS SASQUATCH** EXLR NEW GENERATION 071M AUTO BLACK DAKOTA 129J  
EXLR LUVLY 084F  
MAGS FRUITFUL 487M EXLR LIMITED EDITION 765J  
WULFS FRUITFUL 6052F

**SEDGWICKS ERICA 2314** BON VIEW NEW DESIGN 878 B/R NEW DESIGN 036  
BON VIEW GAMMER 85  
R P BUSHWACKER 3 944  
SEDGWICKS VERITY 25

	CE	BW	WW	YW	MA	CM	SC	DC	CW	RE	YG	MS	SMI
EPDs	9	-0.9	39	82	31	4	0.1	14	15	-0.21	0.22	0.22	48
	13	33	20	12	09	12	P	P	P	P	P	P	-

Homozygous polled and double black is this 50% Lim-Flex herd sire prospect sired by MAGS Sasquatch. 58U has a -0.9 for birth weight, a 82 for yearling weight, a 31 for milk and a .22 for marbling. This young prospect has a tremendous pedigree, EPD's and is deep and sound.

BW: 83 lbs.; WW: 835 lbs.

**PBRs U Day 844U****Lot 104**PB Limousin (100/90.4) Bull 04.08.08 PBRs 0844U  
NPM 1918570 Double Polled Black

**DHVO DEUCE 132R** GPFF BLAQUE RULON BLACK DIAMOND  
QUAIL RUN RAMONA BP  
AMY JO DHAN 20L BLACK CAT DHAN 152G  
GPFF AMBER JO

**MAGS NEW GAMES 169N** MAGS LITTLE BROTHER EXLR DAKOTA 353G  
DJ ESSENCE  
MAGS GAMES WE PLAY 245L DVFC COOKIE MONSTER 108H  
MAGS GAMES WE PLAY

	CE	BW	WW	YW	MA	CM	SC	DC	CW	RE	YG	MS	SMI
EPDs	5	2.5	50	79	19	1	0.6	16	41	0.54	0.01	-0.09	41
	P	35	30	16	11	P	11	P	P	P	P	P	-

This young herd sire prospect is royally bred and we are certain you will really like this bull. Like most Deuce sons, he stands strong on big feet, soft in his pasterns and very eye appealing. This bull is super thick and has a lot of muscle and power.

BW: 83 lbs.; WW: 682 lbs.

**PBRs Undertow 862U****Lot 106**PB Limousin (100/89.6) Bull 05.11.08 PBRs 862U  
NPM 1909348 Homozygous Polled Homozygous Black

**RLAY RULER 13N** GPFF BLAQUE RULON BLACK DIAMOND  
QUAIL RUN RAMONA BP  
MISS NATRONA 10D LKCC TOMAHAWKS TOUCHDOWN  
HONY POLLED QUEEN 903X

**MAGS TEMPTRESS 536L** KRMC OUTCROSS 192G LVLS POLLED BLACK JACK  
HOLIJO 103  
CANE RIDGE TEMPTRESS 6611 WULFS RAMBLER 8400X  
CANE RIDGE TEMPTRESS 404W

	CE	BW	WW	YW	MA	CM	SC	DC	CW	RE	YG	MS	SMI
EPDs	6	-0.2	33	66	16	2	0.1	-	10	0.48	-0.04	-0.11	36
	14	30	20	13	13	13	P	-	P	P	P	P	-

Homozygous black and homozygous polled is this herd sire sired by RLAY Ruler 13N out of a KRMC Outcross 192G dam. He has a -0.2 for birth, and a .48 for REA. He is high performing, thick ended and easy maintenance.

BW: 69 lbs.

**PBRs 248U****Lot 103**Lim-Flex (50/44.5) Bull 03.22.08 PBRs 248U  
LFM 1922885 -- Double Black

**DHVO DEUCE 132R** GPFF BLAQUE RULON BLACK DIAMOND  
QUAIL RUN RAMONA BP  
AMY JO DHAN 20L BLACK CAT DHAN 152G  
GPFF AMBER JO

**HOMEACRES MINA D91** HOMEACRES TRAVELER A27 C R TRAVELER 574  
OCC REVOLUTION ROSE 850F  
HOMEACRES MINA 990 V R S TRAVELER 9375  
GREER MINA W266

	CE	BW	WW	YW	MA	CM	SC	DC	CW	RE	YG	MS	SMI
EPDs	6	0.2	52	90	25	0	-	-	36	0.36	0.12	0.02	45
	12	31	20	13	08	11	-	-	P	P	P	P	-

Sired by DHVO Deuce 132R is this double black and double polled herd sire. This 50% Lim-Flex bull has a .2 birth EPD, a 52 and 90 for weaning and yearling EPD's and a 25 for milk. He is long and wide down his top, heavy muscled, has plenty of bone and sound on both ends. If you need muscle in an eye appealing package give 248U a look.

BW: 83 lbs.; WW: 830 lbs.

**PBRs Umberto 823U****Lot 105**PB Limousin (100/87.8) Bull 03.14.08 PBRs 823U  
NPM 1911417 Double Polled Double Black

**RLAY RULER 13N** GPFF BLAQUE RULON BLACK DIAMOND  
QUAIL RUN RAMONA BP  
MISS NATRONA 10D LKCC TOMAHAWKS TOUCHDOWN  
HONY POLLED QUEEN 903X

**MAGS MAIZIE** EXLR DAKOTA 353G WULF'S COUNT DOWN 9251C  
CANE RIDGE DAPHNE 011D  
MAGS GO IN STYLE COLE FIRST DOWN 46D  
WULF'S MANDARIN 1121A

	CE	BW	WW	YW	MA	CM	SC	DC	CW	RE	YG	MS	SMI
EPDs	6	-0.7	34	68	23	3	0.5	-	6	0.43	-0.14	-0.13	37
	14	31	26	14	12	13	10	-	P	P	P	P	-

Double black and double polled and out of one of our senior herd sires RLAY Ruler. This purebred prospect is negative for birth weight, has a 23 for milk and is really good. When you analyze him you will find a long bodied, heavy muscled bull that has plenty of rib depth and shape. 823U has a large scrotal circumference and is sound footed. You are sure to appreciate Umberto 823U.

BW: 68 lbs.; WW: 685 lbs.

**PBRs 678U****Lot 107**Lim-Flex (50/46.6) Bull 05.07.08 PBRs 678U  
LFM 1922900 --- Double Black

**PBRs BIG LOD 507R** JCL LODESTAR 27L HUNTS HI-LITER 245G  
EXLR JULIE 617L LOGAN'S CHEERLEADER 280G  
EXLR POLLED BENCHMARK709G  
EXLR 620G

**BT CHLOE 420N** SITZ ALLIANCE 8199 SITZ TRAVELER 8180  
BT CHLOE 62K ALBERDA TRAVELER 416  
BT CHLOE 13G

	CE	BW	WW	YW	MA	CM	SC	DC	CW	RE	YG	MS	SMI
EPDs	15	-3.0	37	81	27	4	0.3	-	27	-0.18	0.19	0.09	43
	12	32	25	12	12	11	05	-	P	P	P	P	-

Homozygous polled and double black is this 50% Lim-Flex prospect sired by PBRs Big Lode 507R. He has a -3.0 for birth weight, a 81 for yearling weight and a 27 for milk. This complete herd sire should sire light birth weight calves that compete and grow very well.

BW: 68 lbs.; WW: 660 lbs.





**LOT 108 -  
PBR8 838U**



**LOT 109 -  
PBR8 U Day 864U**

**PBR8 Ulric 838U** *Lot 108*

PB Limousin (100/90.4) Bull 04.05.08 PBR8 0838U  
NPM 1918567 Double Polled Black

<b>DHVO DEUCE 132R</b>	GPF BLAQUE RULON AMY JO DHAN 20L	BLACK DIAMOND QUAIL RUN RAMONA BP BLACK CAT DHAN 152G GPF AMBER JO
<b>MAGS NEW GAMES 169N</b>	MAGS LITTLE BROTHER MAGS GAMES WE PLAY 245L	EXLR DAKOTA 353G DJ ESSENCE DVFC COOKIE MONSTER 108H MAGS GAMES WE PLAY

	CE	BW	WW	YW	MA	CM	SC	DC	CW	RE	YG	MS	SMI
EPDs	5	2.1	57	88	19	1	0.7	16	41	0.54	0.01	-0.09	43
P		35	30	16	11	P	11	P	P	P	P	P	-

838U is long and strong down his top, thick through his lower quarter, very clean in his sheath and travels very well. If you like muscle and performance in a herd sire then 838U might be for you.

**PBR8 U Day 864U** *Lot 109*

PB Limousin (100/87.8) bull 05.17.08 PBR8 864U  
NPM 1917002 Double Polled Red

<b>RLAY RULER 13N</b>	GPF BLAQUE RULON MISS NATRONA 10D	BLACK DIAMOND QUAIL RUN RAMONA BP LKCC TOMAHAWKS TOUCHDOWN HONY POLLED QUEEN 903X
<b>MAGS PLACE IN THE SUN</b>	LVLS SECRET WEAPON 4408K ALCM KACTUS KID	LVLS FARMER 4G LVLS 408H EXLR DAKOTA 353G MAGS FLASHBACKS

	CE	BW	WW	YW	MA	CM	SC	DC	CW	RE	YG	MS	SMI
EPDs	6	1.2	44	83	23	4	0.5	-	12	0.42	-0.09	-0.12	40
P		P	P	P	P	P	P	-	P	P	P	P	-

Red and double polled is this purebred herd sire prospect sired by Ruler. His dam is out of the proven and multiple trait leading herd sire LVLS Secret Weapon 4408K. 864U has a 83 yearling EPD, a 23 for milk and a .42 for REA. He is extremely long bodied, heavy muscled and stands stout in his stance.

BW: 73 lbs.; WW: 680 lbs.



**LOT 110 -  
PBR Union Boss 818U**



**LOT 111 -  
PBR Uka 858U**

**PBR Union Boss 818U**

**Lot 110**

PB Limousin (100/88.6) Bull 02.26.08 PBR 818U  
NPM 1912276 Homozygous Polled Homozygous Black

**CARROUSELS PURE POWER** GPFF BLAQUE RULON  
TUBB FIRST CLASS 666F BLACK DIAMOND  
QUAIL RUN RAMONA BP  
WULFS RAMBLER 8400X  
TUBB MISS P UPDATE 089Y  
**MAGS NEXT DAY** AUTO BLACK DAKOTA 129J  
AUTO NATASHA 273G EXLR DAKOTA 353G  
DFLC JET SET BPC 34Y  
TUBB GRINDER 749D  
MISS WOLFETTE 9051X

	CE	BW	WW	YW	MA	CM	SC	DC	CW	RE	YG	MS	\$MI
EPDs	5	3.7	54	96	16	5	0.7	6	17	0.48	-0.09	-0.12	43
	P	34	29	21	16	P	18	P	P	P	P	P	-

Double homozygous is this prospect out of Carrouseles Pure Power and a nice AUTO Black Dakota 129J daughter. 818U has a 54 weaning and a 96 yearling EPD, and is adequate for milk and has a .7 scrotal EPD. This bull is very masculine and balanced in his look, heavy boned and clean in his neck and shoulder. Union Boss should sire attractive heifer prospects for his new owner.  
BW: 80 lbs.; WW: 780 lbs.

**PBR Uka 858U**

**Lot 111**

Lim-Flex () Bull 04.26.08 PBR 858U  
LFM 1937035 Homozygous Polled Homozygous Black

**AUTO DOLLAR GENERAL 122R** LVLS SECRET WEAPON 4408L LVLS FARMER 4G  
AUTO KYRIA 232K LVLS 408H  
AUTO HACKETT 702H  
WULFS HAPPINESS 8136H  
**MAGS PARIS** DOUBLE G MARKSMAN 8776 DOUBLE G MARKSMAN  
MISS DOUBLE G 8776  
EXLR DAKOTA 353G  
MAGS LUANNA 902L MAGS GARLAND

	CE	BW	WW	YW	MA	CM	SC	DC	CW	RE	YG	MS	\$MI
EPDs	6	1.1	59	105	29	5	0.5	-	38	0.21	0.18	0.19	53
	P	P	P	P	P	P	P	-	P	P	P	P	-

Here is a deep sided, sound structured herd sire prospect that is very smooth in his shoulder and neck. 858U is square hipped, fluent in his movement and trim in his lower 1/3. Cull that old bull and put a very complete prospect to work in you program.



**40** PROOF of PROGRESS



## PBRs 118U Lot 112

Lim-Flex (50/46.4) Bull                      03.12.08                      PBRs 118U  
LFM 1919128                      Homozygous Polled                      Double Black

<p>JCL LODESTAR 27L <b>PBRs BIG LODE 507R</b> EXLR JULIE 617L</p> <p>G A R PARAMOUNT <b>SEDGWICKS ANNIE 2811</b> SEDGWICKS ANNIE 8117</p>	<p>HUNTS HI-LITER 245G LOGAN'S CHEERLEADER 280G EXLR POLLED BENCHMARK709G EXLR 620G GAR PRECISION 1680 G A R EXT 2114 W C C BANDO B88 SEDGWICKS ANNIE 4561</p>
---	--

	CE	BW	WW	YW	MA	CM	SC	DC	CW	RE	YG	MS	SMI
EPDs	13	-3.0	39	81	26	3	0.3	-	37	-0.23	0.39	0.38	52
	12	29	18	11	12	11	P	-	P	P	P	P	-

Here is another really nice bull sired by PBRs Big Lode 507R that is double black and homozygous polled. This Lim-Flex bull has a 13 for CED, a 26 for milk and a .38 for marbling. His SMTI is 52, so if you are in the market for a bull that will give you small calves at birth and increase quality grades in your cattle then look no further.

BW: 72 lbs.; WW: 845 lbs.

## PBRs 448U Lot 114

Lim-Flex (50/43.4) Bull                      04.18.08                      PBRs 448U  
LFM 1922894                      --                      Double Black

<p>GPFf BLAQUE RULON <b>LESF ASPHALT 9N</b> GPFf EXTRA SWEET ELITE</p> <p>R P BUSHWACKER 3 944 <b>SEDGWICKS HEATHERBLOOM 37</b> SEDGWICKS HEATHERBLOOM 75</p>	<p>BLACK DIAMOND QUAIL RUN RAMONA BP LKCC TOMAHAWKS TOUCHDOWN HC EXTRAORDINARY HCR 61X R P 3RD BUSHWACKER R P NEW DESIGN MISS JUICE G D A R 711 COMPUTER SEDGWICKS HEATHERBLOOM 64</p>
---	--

	CE	BW	WW	YW	MA	CM	SC	DC	CW	RE	YG	MS	SMI
EPDs	5	-0.1	34	71	22	-3	0.4	-	-6	-0.25	0.06	0.04	41
	18	35	30	19	17	18	13	-	P	P	P	P	-

Sired by LESF Asphalt 9N is this double black and double polled prospect. This 50% Lim-Flex bull has a moderate birth weight, adequate growth and a .04 for marbling. He is long sided, thick ended with a big foot and soft pasterns.

BW: 81 lbs.; WW: 720 lbs.

## PBRs 608U Lot 116

Lim-Flex (50/44.3) Bull                      05.08.08                      PBRs 608U  
LFM 1922898                      --                      Double Black

<p>KRVN NASKAR 013N <b>PBRs NEXT GREAT 554R</b> MAGS NEXT DAY</p> <p>SEDGWICKS TRAVELER2349190 <b>SEDGWICKS PRINCESS 4972</b> SEDGWICKS PRINCESS 4971</p>	<p>GPFf BLAQUE RULON WL JU JU GAL 149J AUTO BLACK DAKOTA 129J AUTO NATASHA 273G GDAR SVF TRAVELER 234D SEDGWICKS ERICA 9194 T C DIVIDEND 963 SEDGWICKS PRINCESS 212</p>
---	---

	CE	BW	WW	YW	MA	CM	SC	DC	CW	RE	YG	MS	SMI
EPDs	9	-0.6	54	96	30	4	0.6	-	14	0.12	0.06	0.03	47
	11	30	24	11	10	10	06	-	P	P	P	P	-

Sired by PBRs Next Great 554R is this double black and double polled bull that is a 50% Lim-Flex. He has a 9 for CED, a 96 for yearling EPD, a 30 for milk and a SMTI of 47. One of the top numbered bulls in the offering and one that is just as complete in his make up. The total package is here for small calves, high performance and milk.

BW: 76 lbs.; WW: 835 lbs.

## PBRs 438U Lot 113

Lim-Flex (50/46.4) Bull                      04.18.08                      PBRs 438U  
LFM 1919144                      Homozygous Polled                      Double Black

<p>JCL LODESTAR 27L <b>PBRs BIG LODE 507R</b> EXLR JULIE 617L</p> <p>R&amp;R VENTURE 702 <b>BT TONIA 813N</b> B&amp;B TONIA 40E</p>	<p>HUNTS HI-LITER 245G LOGAN'S CHEERLEADER 280G EXLR POLLED BENCHMARK709G EXLR 620G WK PROTOTYPE 3045 PINEHILLS PRIDE S D R TRAVELER 134 M TONIA 3Z</p>
---	---

	CE	BW	WW	YW	MA	CM	SC	DC	CW	RE	YG	MS	SMI
EPDs	6	0.2	52	90	25	0	-	-	36	0.36	0.12	0.02	45
	12	31	20	13	08	11	-	-	P	P	P	P	-

Homozygous polled and double black is this very complete herd sire prospect. He has tremendous balance to his EPD's including a -0.8 for birth, a 82 for yearling, a 24 for milk, a .13 for marbling and a SMTI of 46. 438U will add muscle and volume to your calve crop.

BW: 82 lbs.; WW: 700 lbs.

## PBRs 558U Lot 115

Lim-Flex (50/44.0) Bull                      05.03.08                      PBRs 558U  
LFM 1922897                      ---                      Double Black

<p>MAGS KABOOM <b>PBRs ROUGH RIDER 596R</b> LYLL BLACK VERDICT 828G</p> <p>CALIFORNIA TRAVELER <b>BT ECHO 33M</b> KMK ECHO J29</p>	<p>EXLR DAKOTA 353G MAGS GO IN STYLE JCL BLACK OUT D&amp;M MISS DEW DROP 488C R R TRAVELER 5204 TEHAMA EISA ERICA Y699 LEACHMAN RIGHT TIME TEHAMA ECHO G463</p>
--	---

	CE	BW	WW	YW	MA	CM	SC	DC	CW	RE	YG	MS	SMI
EPDs	7	-1.8	32	72	27	1	0.3	-	-	-	-	-	-
	12	32	25	12	13	11	05	-	-	-	-	-	-

Double black and double polled is this son of PBRs Rough Rider 596R. He has a -1.8 for birth weight with an actual of 76 lbs. In addition to a light birth weight, 558U has adequate performance with a 27 for milk. He should add calving ease, muscle and milk to his progeny.

BW: 76 lbs.; WW: 675 lbs.

# REFERENCE SIREs



**PBRs 418U**

## PBRs 418U *Reference*

Lim-Flex (50/45.3) Bull 04.15.08 PBRs 418U  
LFM 1922893 Homozygous Polled Double Black

**MAGS SASQUATCH** EXLR NEW GENERATION 071M AUTO BLACK DAKOTA 129J  
MAGS FRUITFUL 487M EXLR LUVLY 084F  
EXLR LIMITED EDITION 765J  
WULFS FRUITFUL 6052F  
RR 9440 SCOTCH CAP 1483 RR COTCHCAP 9440  
**SEDGWICKS JODY 235** CAR DON MISS DEVOTION B236  
HIGH FIELD JODY 3A5 SVF MINOTAUR 250B  
BASIN HEIRESS 963A

	CE	BW	WW	YW	MA	CM	SC	DC	CW	RE	YG	MS	SMI
EPDs	8	0.5	39	84	26	3	0.0	12	16	-0.05	0.18	0.10	44
	13	34	27	11	12	12	04	-	P	P	P	P	-

## MAGS Unmasked Man *Reference*

Lim-Flex (75/67.5) Bull 04.15.08 MAGS 4613U  
LFM 906786 Double Polled Homozygous Black

**GPFF BLAQUE RULON** BLACK DIAMON CANE RIDGE BLACK DRAK  
QUAIL RUN RAMONA BP WULFS DIADEM 4260D  
LKCC TOMAHAWKS TOUCHDOWN  
AMBL FAVORITE GIRL 36W  
**MAGS PARADISE CANYON** BR MIDLAND TWIN VALLEY PRECISIONE 161  
BR ROYAL LASS 7036-19  
MISS WULFETTE 6230F WULFS QUARTERBACK 4222B  
MISS WOLFETTE 0278Y

	CE	BW	WW	YW	MA	CM	SC	DC	CW	RE	YG	MS	SMI
EPDs	7	3.3	54	96	19	-1	05.	14	32	0.64	0.07	0.08	49
	P	36	30	21	20	P	16	P	24	23	23	23	-

## MAGS TABLE TENNIS *Reference*

PB Limousin (100/88.4) Bull 02.02.07 MAGS 2500T  
NPM 1878619 Double Polled Black

**LVLS SECRET WEAPON 4408K** LVLS FARMER 4G COLE FIRST DOWN 46D  
LVLS 408H LVLS JENI 601V  
LVLS POLLED JUSTICE 0601E  
LVLS MISS STABILIZER 1408E  
**ROYAL DRL 108K** EXLR DAKOTA 353G WULFS COUNT DOWN 9251C  
CANE RIDGE DAPHNE 011D  
CANE RIDGE DUCHESS 150U

	CE	BW	WW	YW	MA	CM	SC	DC	CW	RE	YG	MS	SMI
EPDs	5	2.9	56	100	35	8	0.7	12	24	0.22	0.12	0.02	47
	P	3	32	21	20	P	18	P	25	25	25	25	-

## SYES User Friendly 524U *Reference*

PB Limousin (100/89.7) Bull 03.18.08 SYES 524U  
NPM 1909670 Double Polled Black

**UFLS RANSOM 3059R** WULFS NASA 1212N WULFS FANFARE 4055F  
WULFS NOBILITY 3059N MISS WULFETTE 1212L  
COLE WULF HUNT  
WULFS KLARICE 0095K  
**MISS SYES JUSTICE 224S** ROMN JUSTICE ROMN FORTUNE  
MISS SYES FARMER 225P ROMN LADY ROCK 57G  
LVLS FARMER 4G  
MISS SYES FORREST 225M

	CE	BW	WW	YW	MA	CM	SC	DC	CW	RE	YG	MS	SMI
EPDs	19	-3.5	38	76	28	12	0.5	29	38	0.61	0.07	-0.01	40
	22	35	30	25	11	21	28	P	21	19	19	19	-

## MAGS Sasquatch *Reference*

PB Limousin (100/90.5) Bull 1.11.06 MAGS 1462S  
NPM 1841936 Homozygous Polled Black

**EXLR NEW GENERATION 071M** AUTO BLACK DAKOTA 129J EXLR DAKOTA 353G  
EXLR LUVLY 48F DFCL JET SET BPC 34Y  
WULFS DAWSON 4421D  
AMBL LUVLY 340Y  
**MAGS FRUITFUL 487M** EXLR LIMITED EDITION 765J EXLR POLLED BENCHMARK 709G  
WULFS GLENDA 7021G  
WULFS QUARTERBACK 4222B  
WULFS CAKE WALK 3097C

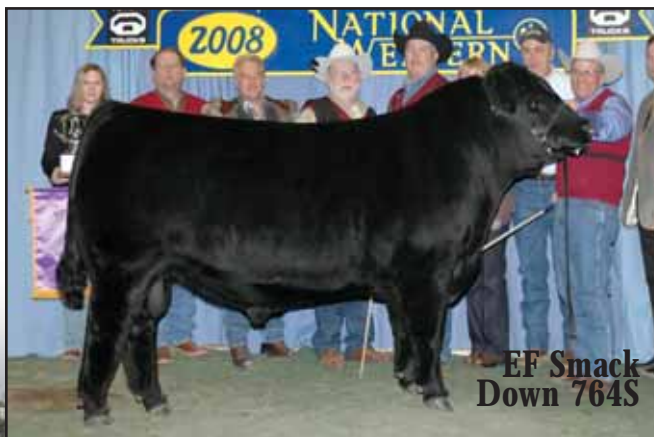
	CE	BW	WW	YW	MA	CM	SC	DC	CW	RE	YG	MS	SMI
EPDs	12	0.9	36	77	28	5	0.0	24	16	0.32	0.01	0.05	43
	32	71	51	23	16	28	16	24	44	39	39	38	-

## EF Smack Down 764S *Reference*

Lim-Flex (50/44.1) Bull 03.01.06 ACET 764S  
LFM 1846992 Homozygous Polled Double Black

**EF MAIN STAY 541M** AUTO BLACK DAKOTA 129J EXLR DAKOT 353G  
EXLR 231J DFCL JET SET BPC 34Y  
WULFS GUARDIAN 5074G  
EXLR LUVLY 081F  
**ML PRUDENCE 427** V A R GATEWAY 4101 GDAR OSCAR 711  
ML PRUDENCE 9014 LEACHMAN LASS 1004  
TC DIVIDEND 963  
ML PRUDENCE 9221

	CE	BW	WW	YW	MA	CM	SC	DC	CW	RE	YG	MS	SMI
EPDs	9	-1.3	46	85	28	4	-0.2	13	-1	-0.38	0.22	0.12	46
	28	54	41	21	18	24	12	P	41	37	37	37	-



**EF Smack Down 764S**



## A new buyer for your Limousin-influenced calves.



Strauss Veal and Lamb, Int'l, has partnered with the North American Limousin Association to develop and market America's first Limousin-based veal product.

- Hot carcass weight bonus
- Equal value for bulls, heifers and steers
- 450- to 500- lb calves, truckload lots preferred
- Forward buys, spot market contracts, etc. available
- Antibiotic & hormone free, source & age verified
- 52 week-year supply needed
- Accepting deliveries anytime.

Increase returns, save time and labor on your 450- to 500-lb calves.  
Contact a Strauss buying representative today to learn more.

- Ray Krones, Strauss Veal and Lamb, 815-867-0528
- Wendell Geeslin, 970-396-6958

**Strauss**<sup>®</sup>

*Meadow Reserve*<sup>™</sup>

**Strauss Veal & Lamb Int'l**

PO Box 342 · Hales Corners, WI 53130 · 800-562-7775

[www.straussveal.com/meadowreserve](http://www.straussveal.com/meadowreserve)

We care  
about **Calves**

We care  
about **American Farmers**

We care about  
American **Ranchers**

We care  
about the **Environment**

We know you **CARE**, too.

We want to be your partner.

We want to buy your calves.

In partnership with

 **LIMOUSIN**  
NORTH AMERICAN LIMOUSIN FOUNDATION





**R&R  
Marketing Company**  
3610 Bear Creek Lane  
Thompson's Station, TN 37179

(L.#2845)

**FIRST CLASS  
PRE-SORTED  
PAID**  
Montezuma, Iowa  
Permit No. 30

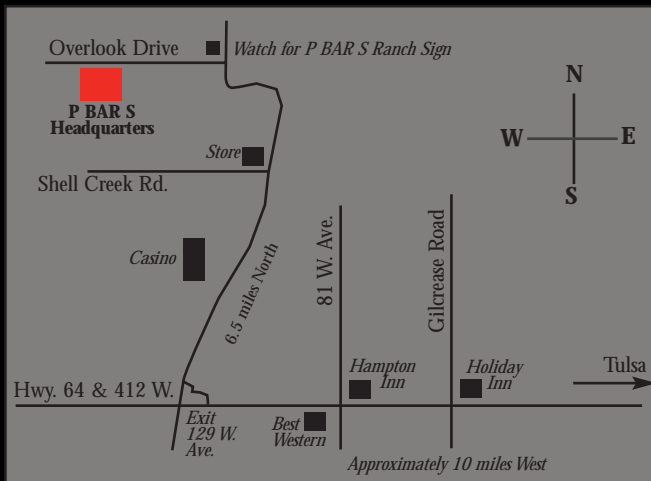
Catalog  
designed by



# Proof of Progress II

## PBAR S RANCH

### Limousin Sale



**Directions:**

**From Tulsa, OK** - Take Hwy. 64 - 412 West to Sand Springs  
Exit at 129 W. Ave. and follow map.

**From Oklahoma City, OK** - Turnpike I-44 to Sapulpa Exit, Hwy.  
97; got North to Sand Springs; cross over Ark River Bridge and take  
Hwy. 6 & 412 West 1 mile to Exit 129 W. Ave. and follow map.