



**PBARS**  
RANCH

# Proof of Progress III

Limousin & Lim-Flex Sale

**\$5,000  
HOLE IN  
ONE  
give-a-way**

**Saturday,  
October 2, 2010  
3:30 PM  
at the Ranch  
Sand Springs, OK**

**PBAR**  
RANCH

# Proof of Progress III

## Limousin & Lim-Flex Sale

**Saturday,  
October 2, 2010**

3:30 PM • at the Ranch, Sand Springs, Okla.

**Selling 100 Head  
of Registered Limousin  
& LimFlex cattle**

- 35 Spring Bred Heifers
- 24 Fall-Calving Heifers
- 25 18-month-old Bulls
- 15 Show Heifer Prospects
- 15 Angus Cows w/Lim-Flex Calves
- 1 Pick of the Flush
- 1 Pregnancy

### SALES TEAM

#### SALE CONSULTANTS:

**American Cattle Services, Inc.**  
Ken Holloway, 580.581.7652  
acs@americancattleservices.com  
www.americancattleservices.com



Mark Smith  
phone/fax: 515.965.1458  
mobile: 515.229.5227



Seedstock Consultants Specialized Sales  
Keith Kesse • cell: 871.821.6263  
804.353.2220 • fax: 804.353.2221  
kkseedstock@aol.com



#### SALE MANAGEMENT:

**R&R  
Marketing Company**

**Randy Ratliff**  
cell: 615.330.2735  
615.255.8982 • fax: 615.255.8992  
PO Box 281677, Nashville, TN 37228  
sales@rrmktg.com • www.rrmktg.com



(L#2845)

#### SCHEDULE:

##### Saturday, October 2nd

- 10:00 am Viewing of cattle
- 10:30 am Hole-In-One Contest Begins ...  
... \$5,000 Sale Credit  
Music & Entertainment
- 12:00 Noon Complementary lunch & drinks
- 3:30 pm **Proof of Progress III Sale**

#### AUCTIONEER:

C.K. "Sonny" Booth

#### SALE DAY PHONES:

- Randy Ratliff.....615.330.2735
- Bob Getz.....918.346.2437
- Elgin Elmore.....918.530.0158

#### HOTEL ACCOMMODATIONS:

- Best Western .....918.245.4999  
.....81st W. Ave. Exit
- Hampton Inn .....918.245.8500  
.....81st W. Ave. Exit
- Holiday Express.....918.585.7000  
.....Gilcrease Museum Road



# PBARS RANCH

Dear Limousin Breeders,

Welcome to our 3rd Annual Limousin and Lim-Flex production sale. We at P Bar S Ranch welcome you to our sale and are in hopes you will enjoy yourselves. I am very pleased to have Bob Getz as my general manager and Elgin Elmore as the cow herd manager. They have assembled a top producing set of Limousin and Lim-Flex genetics that continue to amaze us with their producing ability. I am very proud of their work and appreciate all they do for P Bar S Ranch or as we call it "The Little Ranch with Big Genetics."

In this sale you will find a good mix of Purebred and Lim-Flex genetics in which we are selling nothing but our very finest. With the exception of a few all the animals selling carry the PBRS prefix and we take pride in knowing that you have blessed us by your consideration of buying what we have raised.

We have a fun filled day planned with the \$5000 hole-in-one giveaway, entertainment and our production sale. Our gates are open and we look forward to our many friends coming back again and hopefully new ones we will meet.

**Paul Sisemore**, owner  
11720 Overlook Drive  
Sand Springs, OK 74063  
[www.pbars.net](http://www.pbars.net) • [psisemore@custofab.com](mailto:psisemore@custofab.com)  
Ranch Manager, Bob Getz, 918.346.2437  
Asst. Manager, Elgin Elmore, 918.346.2438

I we can answer any questions then please don't hesitate to call.

Sincerely yours,  
Paul Sisemore



Bob Getz



Paul Sisemore



Elgin Elmore



Taylor Elmore



Roger



Slim



Roy



# Hole In ONE \$5,000

**PBARS**  
RANCH

P Bar S Ranch owner, Paul Sisemore is a lover of Limousin cattle and the game of golf. As you view the sale offering in this catalog you will realize how serious he is about raising his cattle. As you view this putting green and when you see it on sale day you will realize how serious he is about golf. On sale day each person attending the sale will have a one shot chance to make a hole in one from the 150 yard tee. If you get a hole in one you will then get a \$5000 credit in the sale later that afternoon. So bring your catalog, favorite golf club, magical swing and come join in the fun.

# Proof of Progress

## Limousin & Lim-Flex Sale

Scenes from our 2008 and 2009 Production Sale. We realize this is a people business and have come to appreciate the relationships we have built. Thank you for your continued support.



# Carrouseles PINA COLADA cow family



Reference dam, **CARROUSELES PINA COLADA**

## Carrouseles Pina Colada

*Donor  
Dam*

PB Limousin (100/86.1) Cow  
NPF 1771774

02.03.04  
Double Polled

CRSL 4332P  
Homozygous Black

EXLR DAKOTA 353G  
**AUTO BLACK DAKOTA 129J**  
DFLC JET SET BPC 34Y

TCDT MR T.D.'S POWER PACK  
**ELMW GINNIE P58G**  
ELMW POLLED ECSTASY 67E

WULF'S COUNT DOWN 9251C  
CANE RIDGE DAPHNE 011D  
GENERAL LEE LOJW 40S  
DFLC BPC 20U  
LKCC TOMAHAWKS TOUCHDOWN  
MISS TOMAHAWK'S MILKER  
TYRE DEAN 17B  
MICALE 37X

	CE	BW	WW	YW	MA	CM	SC	ST	DC	CW	RE	YG	MS	SMI
EPDs	6	2.8	43	90	22	4	0.3	17	11	13	0.28	0.03	-0.14	38
	35	55	44	28	22	33	19	P	30	45	42	42	41	

Without a doubt the most noted cow right now in the entire Limousin breed is **Carrouseles Pina Colada**. She is a past national champion female that now resides at P Bar S Ranch as the famed donor. She is owned with partners Edwards Limousin, Higginville, MO. This \$80,000 valued donor has made quite the production record for her since her winning in the most prestigious show in all the land. Her embryo daughter sired by DHVO Deuce, MAGS Uahuka, was named the 2010 national champion female and was named the 2009 reserve national champion as well. She was shown and campaigned successfully by Magness Land & Cattle Co., Platteville, CO and Bella Star Limousin, Fulton, MO. Brown Land & Cattle Co., Diamond, MO showed the 2008 National Sale champion heifer which topped the sale at \$30,000 to Tubmill Creek Farms, New Florence, PA. This list goes on and on with the Pina cow family. It is a lineage that is tough to beat.

Selling as lot 1 in this sale you will have a chance to buy pick of the flush from Pina and sired by the elite Angus sire, Bismark. The entire flush is due around 11.15.10 and will be available to pick at weaning time. Of course the feeding, maintenance and management of these calves goes without question. As you will see throughout this catalog, they sure know how to take care and maintain their cattle at the level you would expect.

This 50% Lim-Flex mating will create much interest across the breed. The mating of the elite show female and prominent donor Pina will be interesting mated to the powerhouse Angus sire, Bismark.

Also highlighting this sale as lot 2 will be a guaranteed heifer calf due around 1.01.11. The buyer can take the recipient home once the final bid is placed. What the buyer will get is a full sibling in blood to the MAGS Uahuka female that won Denver this year and was reserve last year as stated earlier in this footnote. This female will have instant notoriety, fame and will just need to be maintained and grown to create her own identity that will proudly represent your program. I would just as soon recommend your money go into an investment like lots 1 and 2 as opposed to the stock market! It for sure will create more excitement for the new owner.



Reference sire, **S A V BISMARK 5682**

## PICK OF THE FLUSH

**11.15.10**

**Lot 1**

Lim-Flex 50%  
Double Polled • Double Black

<b>S A V BISMARK 5682</b>	G A R GRID MAKER	GDAR TRAVELER 044
S A V ABIGALE 0451	G A R PRECISION 2536	SCHOENES FIX IT 826
<b>CARROUSELS PINA COLADA</b>	AUTO BLACK DAKOTA 129J	S A V ABIGALE 6062
ELMW GINNIE P58G	<b>CARROUSELS PINA COLADA</b>	EXLR DAKOTA 353G
	ELMW GINNIE P58G	DFLC JET SET BPC 34Y
		TCDT MR T.D'S POWER PACK
		ELMW POLLED ECSTASY 67E

EPDs	CE	BW	WW	YW	MA	CM	SC	ST	DC	CW	RE	YG	MS	SMI
	9	14	50	95	25	8	-	-	-	12	0.41	-	-	-

## HEIFER PREGNANCY

**Due 01.01.11**

**Lot 1A**

PB Limousin  
Double Polled • Homozygous Black

<b>DHVO TREY 133R</b>	GPFF BLAQUE RULON	BLACK DIAMOND
AMY JO DHAN	<b>DHVO TREY 133R</b>	QUAIL RUN RAMONA BP
<b>CARROUSELS PINA COLADA</b>	AUTO BLACK DAKOTA 129J	BLACK CAT DHAN 152G
ELMW GINNIE P58G	<b>CARROUSELS PINA COLADA</b>	GPFF AMBER JO
	ELMW GINNIE P58G	EXLR DAKOTA 353G
		DFLC JET SET BPC 34Y
		TCDT MR T.D'S POWER PACK
		ELMW POLLED ECSTASY 67E

EPDs	CE	BW	WW	YW	MA	CM	SC	ST	DC	CW	RE	YG	MS	SMI
	4	3.9	48	90	23	0	0.5	-	13	17	0.41	-0.03	-0.13	40

Recip is a black commercial #369.

# SHOW HEIFER prospects



**LOT 2 -  
PBRs Whisper Soft 9162**



Reference dam, **BOHI SEDELIA 6221S**

## PBRs Whisper Soft 9162W

**Lot 2**

Lim-Flex (75/67.7) Cow  
LFF 1961857

12.09.09  
Homo Polled

PBRs 9162W  
Homo Black

**DHVO DEUCE 132R**  
AMY JO DHAN 20L  
G A R INTEGRITY  
**BOHI SEDELIA 6221S**  
ANLC0745K

BLACK DIAMOND  
QUAIL RUN RAMONA BP  
BLACK CAT DHAN 152G  
GPF AMBER JO  
BON VIEW NEW DESIGN 1407  
G A R PRECISION 1019  
COLE FIRST DOWN 46D  
LAURA'S OPIUM

CE	BW	WW	YW	MA	CM	SC	ST	DC	CW	RE	YG	MS	\$MI
6	1.6	55	94	22	1	0.9	-	-	48	0.34	0.25	0.24	53
P	P+	P+	P	P	P	P	-	-	P	P	P	P	

Homozygous polled and homozygous black is this amazing cow and show prospect! She is sired by the two time national sire DHVO Deuce. Her dam is the \$15,000 valued donor BOHI Sedalia 6221S, a daughter of GAR Integrity from the elite Edwards Land & Cattle Co. donor ANLC 0745K. This young heifer is great numbered with a 1.1 for birth, 94 for yearling weight, 22 for milk and .24 for marbling. We love her rib shape and overall capacity that she has. She is so deep bodied it is a little scary. No matter the environment she is put in she will excel. We would assume with her quality that she will be a big time show heifer and donor in the near future.

## PBRs X Paris 010X

**Lot 3**

Lim-Flex (75/66.4) Cow  
LFF 1960299

03.09.10  
Homo Polled

PBRs 010X  
Double Black

**MAGS SOLOMON**  
CARROUSELS PURE POWER  
CARROUSELS NEARLY PERFECT

**MAGS PARIS**  
DOUBLE G MARKSMAN 8776  
MAGS LUANNA 902L

GPF BLAQUE RULON  
TUBB FIRST CLASS 666F  
COLE FIRST DOWN 46D  
COLE CATALINA 3309C  
DOUBLE G MARKSMAN  
MISS DOUBLE G 8776  
EXLR DAKOTA 353G  
MAGS GARLAND

CE	BW	WW	YW	MA	CM	SC	ST	DC	CW	RE	YG	MS	\$MI
7	0.6	45	82	21	4	0.6	-	-	35	0.36	0.09	0.08	46
P	P	P	P	P	P	P	-	-	P	P	P	P	

Double black and homozygous polled is this daughter of MAGS Solomon. Solomon is the leading sire for Jones and Benson Limousin in LaMonte, MO. This young show prospect is from MAGS Paris, a daughter of Double G Marksman 8776 from a daughter of EXLR Dakota. Paris came to P Bar S by way of Magness where she was a top seller in the 2007 Magness sale. 010X has it all going in her favor with her desirable profile, balance and strength in her stance.





**LOT 4 -  
PBRs 170X**

**PBRs 170X** *Lot 4*

Lim-Flex (50/44.5) Cow      03.01.10      PBRs 170X  
LFF 1960303      Homo Polled      Double Black

GPFf BLAQUE RULON      BLACK DIAMOND  
**DHVO TREY 133R**      QUAIL RUN RAMONA BP  
AMY JO DHAN 20L      BLACK CAT DHAN 152G  
GPFf AMBER JO  
HOMEACRES PLATINUM 723      G D A R OSCAR 711  
**HOMEACRES MAY D52**      HOMEACRES HANA 103  
HOMEACRES R D J MAY 604      V D A R LUCYS BOY  
PHARAOH 3005

	CE	BW	WW	YW	MA	CM	SC	ST	DC	CW	RE	YG	MS	SMI
EPDs	4	1.3	43	77	24	-2	0.4	-	-	21	0.01	0.15	0.02	42
	P	P+	P	P	P	P	P	-	-	P	P	P	P	

If you are looking for an amazing show heifer then this may be the one you have been waiting on. She is sired by DHVO Trey 133R. She is a 50% Lim-Flex heifer that is double black and homozygous polled. She has the epd package to get the judges attention in the show ring along with her amazing profile. This heifer so long necked and down her top it will scare you. She is very sound in her movement and docile in her disposition. Come early and try to win \$5000 on the hole in one competition and put that money towards your next show heifer investment.

**PBRs 240X** *Lot 5*

Lim-Flex (50/44.5) Cow      03.05.10      PBRs 240X  
LFF 1960309      Homo Polled      Double Black

GPFf BLAQUE RULON      BLACK DIAMOND  
**DHVO TREY 133R**      QUAIL RUN RAMONA BP  
AMY JO DHAN 20L      BLACK CAT DHAN 152G  
GPFf AMBER JO  
B/R NEW DESIGN 036      V D A R NEW TREND 315  
**E F BLACKCAP 455**      B/R BLACKCAP EMPRESS 76  
BLACKCAP OF 2103      GAR PRECISION 1680  
G A R EXT 2104

	CE	BW	WW	YW	MA	CM	SC	ST	DC	CW	RE	YG	MS	SMI
EPDs	5	1.1	51	94	32	-1	0.4	-	10	28	0.04	0.19	0.22	52
	P	P+	P	P	P	P	P	-	P	P	P	P	P	

Don't know what it is.....but the mating of DHVO Trey with Angus seems to work really well. This young heifer makes that statement so true. She is very feminine and stylish up through her front end and square and level out of her rump. This heifer is big boned and very fluid in her movement. She has a breed leading 32 for milk, 94 for yearling weight, .22 for marbling and 52 for MTI. She has the whole package of conformation, predictable pedigree with a great set of numbers.



# FLUSH



Reference dam, **BUF EPPIONIA 7307**

## BUF Eppionia 7307

Lot 7 B

Angus Cow 09.12.07 7307  
AAA 16116248 -- Black

SITZ TRAVELER 8180  
**S A V 8180 TRAVELER 004**  
BOYD FOREVER LADY 8003

O C C GREAT PLAINS 943G  
**SITZ EPPIONIA 534**  
SITZ EPPIONIA 1632

G D A R TRAVELER 71  
SITZ EVERELDA ENTENSE 1137  
A A R NEW TREND  
S V F FOREVER LADY 57D  
N BAR EMULATION EXT  
DIXIE ERICA OF C H 1019  
SITZ TRAVELER 5556  
SITZ EPPIONIA 2307

	CE	BW	WW	YW	MA	CM	SC	ST	DC	CW	RE	YG	MS	\$MI
EPDs	4	.8	50	88	21	6	-	-	-	16	0.06	-	-	-

Buyer will get a guarantee of six embryos from the bull of their choice.

Selling an embryo flush from this elite Angus donor female. She came from the recent elite production sale at Buford Ranches in Vinita, OK. She is one big time Angus female that will be the leading Angus donor at P Bar S. She will head up the creation of some of the finest Lim-Flex cattle that P Bar S can create. This female is perfect in her profile and has the breed leading set of epd's to go with the breed leading pedigree.

## mags REVA 3383R choice embryos

**MAGS REVA 3383R** is one of the up and coming 50% Lim-Flex donors at P Bar S. She is a daughter of the once reserve national champion EF Main Stay 541M. She goes back to the 1680 x Scotch Cap female that has been such a big success at Magness. MAGS Reva is homozygous polled, double black, scanned a 5.03 for IMF, 13.2 for REA and is strong in most other traits. P Bar S mated her to the once All American Futurity champion bull, MAGS Unloosen, the \$65,000 valued half interest bull and son of GPFF Blaque Rulon back to a BR Midland daughter. The buyer will also have the option to select from embryos sired by the black and polled outcross sire Wulf's Titus. These future 75% Lim-Flex calves will have a bright future for the owner and will be ones that have a lot of predictability and promotion behind them.

Reference sire,  
**MAGS UNLOOSEN**



Reference sire, **WULFS TITUS 2149T**



### SIX Embryos

Lot 7 A

Double Polled • Double Black  
66% Lim-Flex

GPFF BLAQUE RULON  
**MAGS UNLOOSEN**  
MAGS PARADISE CANYON

EF MAIN STAY 41M  
**MAGS REVA**  
TWIN EAGLEBEMINDMAID 638K

BLACK DIAMOND  
QUAIL RUN RAMONA BP  
BR MIDLAND  
MISS WULFETTE 6230F  
BON VIEW NEW DESIGN 1407  
G A R PRECISION 1019  
GAR PRECISION 1680  
VF 1483 BEMINDFULMAID7025

	CE	BW	WW	YW	MA	CM	SC	ST	DC	CW	RE	YG	MS	\$MI
EPDs	8	0.8	45	85	16	1	-0.1	-	12	21	0.28	0.24	0.22	49

### SIX Embryos

Lot 7 B

Double Polled • Double Black  
75% Lim-Flex

WULFS REALTOR 1503R  
**WULFS TITUS 2149T**  
WULFS MEADOW GRASS 2149M

EF MAIN STAY 41M  
**MAGS REVA**  
TWIN EAGLEBEMINDMAID 638K

HUNT MR JOCK 44J  
WULFS LENA 1503L  
WULFS GOLIATH 2453G  
MISS WULFETTE 9062J  
BON VIEW NEW DESIGN 1407  
G A R PRECISION 1019  
GAR PRECISION 1680  
VF 1483 BEMINDFULMAID7025

	CE	BW	WW	YW	MA	CM	SC	ST	DC	CW	RE	YG	MS	\$MI
EPDs	4	2.0	54	102	19	3	0.1	-	18	24	0.32	0.08	0.13	51

# Prominent Lim-Flex Genetics



Reference sire, **LIMESTONE DARKHORSE U322**



Reference dam,  
**WLR RENDEZVOUS  
050R**



Reference dam, **LEWIS SELENA 216S**



Reference sire, **DHVO DEUCE 132R**

## SIX Embryos

Lot 8

Double Polled • Double Black  
50% Lim-Flex

BC 7022 RAVEN 7965  
**LIMESTONE DARKHORSE U322**  
PAF TRIDGE 5768

GPF BLAQUE RULON  
**WLR RENDEZVOUS 050R**  
KEHG JULIET 10H

BC MARATHON 7022  
OCC BLACKBIRD 796F  
PAF 741C 0137  
PAF MAX TRIDGE 8694  
BLACK DIAMOND  
QUAIL RUN RAMONA BP  
WULFS RAMBLER 8400X  
TLTL POLLED PEACHES 007B

	CE	BW	WW	YW	MA	CM	SC	ST	DC	CW	RE	YG	MS	SMI
EPDs	3	2.4	46	78	21	3	-	-	-	8	0.43	-	-	-

## SIX Embryos

Lot 9

Double Polled • Double Black  
75% Lim-Flex

GPF BLAQUE RULON  
**DHVO DEUCE 132R**  
AMY JO DHAN 20L

JCL LODESTAR 27L  
**LEWIS SELENA 216S**  
AMEN WENDYS LASS 380

BLACK DIAMOND  
QUAIL RUN RAMONA BP  
BLACK CAT DHAN 152G  
GPF AMBER JO  
HUNTS HI-LITER 245G  
LOGAN'S CHEERLEADER 280G  
S A F FOCUS OF E R  
AMEN WENDYS LASS 246

	CE	BW	WW	YW	MA	CM	SC	ST	DC	CW	RE	YG	MS	SMI
EPDs	10	0.5	61	107	28	2	1.2	-	18	58	0.31	0.23	0.10	50

These 50% Lim-Flex calves will have a bright future. They are sired the great looking Angus sire Limestone Darkhorse, the leading Angus bull for Limestone, LLC. He is big boned, super sound and full of rib and volume with that added thickness that we all like. Their dam is the WLR Rendezvous 050R, the past many times show champion and daughter of GPF Blaque Rulon out of the top show female raised by the Getz family, KEHG Juliet 10H. The top sellers in the P Bar S sale in 2009 was a son at \$11,000 and two daughters at \$8,250 and \$6,600 all sired by SAV Net Worth.

What seems to work well in our breed is mating the national champion show bull, DHVO Deuce to 50% Lim-Flex females. We are certain this mating will work well. The dam Lewis Selena 216S is a 50% Lim-Flex daughter of JCL Lodestar 27L that was a top seller at the 2009 Hayhook Limousin production sale. She is big footed, sound and extremely deep bodied. She will really work well with the mating to the most desirable DHVO Deuce.



Reference sire, **DHVO DEUCE 132R**



Reference sire, **WULFS TITUS 2149T**

## SIX Embryos

Lot 10

Double Polled • Double Black  
PB Limousin

**DHVO DEUCE 132R**  
GPF BLAQUE RULON  
AMY JO DHAN 20L  
BLACK DIAMOND  
QUAIL RUN RAMONA BP  
BLACK CAT DHAN 152G  
GPF AMBER JO  
**MAGS NEXT DAY**  
AUTO BLACK DAKOTA 129J  
AUTO NATASHA  
EXLR DAKOTA 353G  
DFLC JET SET BPC 34Y  
TUBB GRINDER 749D  
WOLFETTE 9051X

	CE	BW	WW	YW	MA	CM	SC	ST	DC	CW	RE	YG	MS	\$MI
EPDs	6	2.5	56	97	25	3	1.0	10	16	38	0.52	-0.02	-0.10	44

## SIX Embryos

Lot 11

Double Polled • Double Black  
PB Limousin

**WULFS TITUS 2149T**  
WULFS REALTOR 1503R  
WULFS MEADOW GRASS 2149M  
HUNT MR JOCK 44J  
WULFS LENA 1503L  
WULFS GOLIATH 2453G  
MISS WULFETTE 9062J  
**LFL PLAYGIRL 31**  
LFL FIRST EDITION 1013L  
LFL PLAYGIRL III  
EXLR LIMITED EDITION 765J  
LFL FREE CHOICE  
EXLR INTRIGUE 361G  
NP PLAYGIRL 012G

	CE	BW	WW	YW	MA	CM	SC	ST	DC	CW	RE	YG	MS	\$MI
EPDs	5	3.1	55	100	24	1	0.6	-	18	29	0.59	-0.07	-0.02	46

One way to create amazing show cattle is mate DHVO Deuce to AUTO Black Dakota daughters. This mating has a world of potential with the blending of two great sires stacked in their pedigree. These future calves will for sure have the show look and the prestigious profile to them. The Deuce calves are the hot item right now and with their dam being a Black Dakota going back to AUTO Natasha, a daughter of TUBB Grinder out of Miss Wolfette 9051X makes it that much more special.

LFL Playgirl 31 is a double homozygous, extremely moderate framed, long necked and very eye appealing show female. She was the top purchase by P Bar S from the Lawrence Family Limousin in the 2009 Fort Worth sale. Her mating to the outcross black and polled sire Titus makes for a very interesting mating. We have a lot of confidence in this mating and are looking forward to seeing the results.

# fall calving FIRST CALF heifers



**LOT 12 -  
PBRs Ur Blingint 748U**



**LOT 13 -  
PBRs Urban Side 8131U**



**LOT 14 -  
PBRs 338U**

## PBRs Ur Blingint 748U

Lot 12

Lim-Flex (50/44.5) Cow 09.21.08 PBRs 748U  
LFF 1933623 Double Polled Double Black

GPFF BLAQUE RULON BLACK DIAMOND  
DHVO DEUCE 132R QUAIL RUN RAMONA BP  
AMY JO DHAN 20L BLACK CAT DHAN 152G  
G A R PARAMOUNT GPFF AMBER JO  
SEDGWICKS HEATHERBLOOM 22 GAR PRECISION 1680  
G A R EXT 2114  
RR 9440 SCOTCH CAP 1483  
SEDGWICKS HEATHERBLOOM 21 RR 9440 SCOTCH CAP 1483  
SEDGWICKS HEATHERBLOOM 214

	CE	BW	WW	YW	MA	CM	SC	ST	DC	CW	RE	YG	MS	SMI
EPDs	7	-0.2	52	98	29	-1	0.6	-	-	54	0.23	0.36	0.27	53
	15	34	26	16	13	14	08	-	-	P	P	P	P	

A.I. 12.27.09 to EF Main Stay 541M; P.E. 1.05-2.02.10 to PBRs 418U.

Headlining this elite P Bar S sale is this 50% Lim-Flex female that is made near perfect. She is sired by the two time national champion DHVO Deuce and from a top producing daughter of GAR Paramount. This first calf heifer has a breed leading set of epd's with a low birth of -0.2, yearling weight of 98, milk of 29 and marbling of .29. Her conformation is amazing and her design and profile is worth bragging about. This is one bred female that you are most certainly going to appreciate on sale day.

## PBRs Urban Side 8131U

Lot 13

Lim-Flex (50/45.1) Cow 11.02.08 PBRs 8131U  
LFF 1933639 Double Polled Homo Black

JCL LODESTAR 27L HUNTS HI-LITER 245G  
LH RODEMASTER 338R LOGAN'S CHEERLEADER 280G  
VERMILION E BLACKBIRD9546 VERMILION 31 STACLER 3491  
CH ENV BLACKBIRD C5941  
GPFF BLAQUE RULON BLACK DIAMOND  
CHR SILKY 208S QUAIL RUN RAMONA BP  
KQ 8090H S A F FAME

	CE	BW	WW	YW	MA	CM	SC	ST	DC	CW	RE	YG	MS	SMI
EPDs	8	0.2	53	105	20	2	0.6	-	8	29	0.09	0.28	0.12	48
	12	33	27	15	11	11	13	-	P	18	17	17	17	

A.I. 12.30.09 to EF Smack Down 746S; P.E. 1.05-2.02.10 to PBRs 418U.

PBRs Urban Side 8131U is a homozygous black daughter of LH Rodemaster 338R and one that is truly amazing. She is long side, deep bodied and very maternal in her look. She is very feminine up through her head and neck and she is very strong down her top and out of her rump. This female is going to make a great donor cow for the new owner and we are very proud to have her as a highlight of this amazing sale offering. She has a 105 for yearling weight, .12 for marbling and low birth of 0.2.

## PBRs 338U

Lot 14

Lim-Flex (50/45.4) Cow 04.10.08 PBRs 338U  
LFF 1919140 Homo Polled Homo Black

HUNTS HI-LITER 245G WADDLES COBALT 3106  
JCL LODESTAR 27L TNUH MISS C245  
LOGAN'S CHEERLEADER 280G COLE FIRST DOWN 46D  
SUMMITCREST HI FLYER 3B18 TTCC CONFIDENCE MAKER  
LOUP RIVER BLACKBIRD 09P5 HOFF HI FLYER SC 7134  
LOUP RIVER BLACKBIRD 22L8 SUMMITCREST LASS 229Y  
LOUP RIVER KRUGERRANDD43G  
BLACKBIRD B A S 468

	CE	BW	WW	YW	MA	CM	SC	ST	DC	CW	RE	YG	MS	SMI
EPDs	14	-2.5	47	96	26	6	0.4	-	12	33	0.00	0.30	0.22	50
	20	35	30	21	20	19	14	-	P	P	P	P	P	

P.E. 11.19-12.14.09 to PBRs Upper Echelon 820U; P.E. 12.14.09-1.05.10 to MAGS Unmasked Man 4613U.

Talk about gorgeous! This female takes the cake...she is something amazing! This female is what keeps us going in the business. She is a daughter of JCL Lodestar 27L from a daughter of Summitcrest Hi Flyer 3818. This first calf heifer has a low birth of -2.5, 96 for yearling weight, 26 for milk and marbling of .22. There is something magical when JCL Lodestar 27L is mated to Angus...and this female is the reason why.



**LOT 15 -  
PBRs Ur A Pop Star 8118U**



**LOT 16 -  
PBRs 658U**



**LOT 17 -  
PBRs 578U**

**PBRs Ur A Pop Star 8118U**

*Lot* **15**

PB Limousin (100/88.8) Cow 10.17.08 PBRs 8118U  
NPF 1933632 Double Polled Red

EXLR NEW GENERATION 071M AUTO BLACK DAKOTA 129J  
**MAGS SASQUATCH** EXLR LUVLY 084F  
MAGS FRUITFUL 487M EXLR LIMITED EDITION 765J  
WULFS FRUITFUL 6052F  
MAGS JUMANJI KRMC BLACK LEGACY 917B  
**MAGS NIGHTFALL** MAGS BLACK & SATIN  
MAGS GO IN STYLE COLE FIRST DOWN 46D  
WULF'S MANDARIN 1121A

	CE	BW	WW	YW	MA	CM	SC	ST	DC	CW	RE	YG	MS	SMI
EPDs	9	1.6	32	67	23	4	0.5	-	16	3	-0.01	0.06	0.11	43
	15	34	29	14	12	14	09	-	P	20	18	18	18	

*A.I. 12.30.09 to LVLS Top Criteria 8862P; P.E. 1.05-2.02.10 to MAGS Tobacco 1555T.*

When there is a heifer this good ... it doesn't matter if she is red. This red heifer is a great one! She is sired by the highly syndicated MAGS Sasquatch and from a daughter of MAGS Jumanji. She scanned a 3.79 for IMF and has a .11 for marbling. This female is very complete in her profile and unique in her design. We love the big foot, extra rib and the overall power found in this bred female.

**PBRs 658U**

*Lot* **16**

Lim-Flex (50/44.0) Cow 05.09.08 PBRs 658U  
LFF 1919154 Homo Polled Double Black

MAGS KABOOM EXLR DAKOTA 353G  
**PBRs ROUGH RIDER 596R** MAGS GO IN STYLE  
LYLL BLACK VERDICT 828G JCL BLACK OUT  
D&M MISS DEW DROP 488C  
SUMMITCRESTHIGHPRIME 0H29 GARDENS PRIME TIME  
**BT VIXON 414N** SUMMITCREST MISSIE 2F55  
BT VIXON 15J B T FREEWAY 91F  
BT VIXON 286E

	CE	BW	WW	YW	MA	CM	SC	ST	DC	CW	RE	YG	MS	SMI
EPDs	4	1.1	40	77	29	0	0.3	-	-	-	-	-	-	-
	12	32	25	13	12	11	05	-	-	-	-	-	-	-

*P.E. 11.19-12.14.09 to PBRs Upper Echelon 820U; P.E. 12.14.09-1.05.10 to MAGS Unmasked Man 4613U.*

If you like your females to be moderate framed and easy doing then here she is. She is moderate, deep bodied and very easy on the eye. This female is a great one! We love her fleshing ability, feminine front end and style and balance. She is sired by PBRs Rough Rider 596R, a son of MAGS Kaboom from a daughter of JCL Black Out. Her dam is a Summitcrest High Prime daughter that is one of the finest Angus cows at P Bar S. 658U has a low birth of 1.1 and high milk of 29 is homozygous polled.

**PBRs 578U**

*Lot* **17**

Lim-Flex (50/44.3) Cow 05.03.08 PBRs 578U  
LFF 1919153 Homo Polled Double Black

KRVN NASKAR 013N GPFF BLAQUE RULON  
**PBRs NEXT GREAT 554R** WLJUJU GAL 149J  
MAGS NEXT DAY AUTO BLACK DAKOTA 129J  
AUTO NATASHA 273G  
HARB NUGGET 760 JH G D A R GOLD NUGGET 766  
**BT ELBA 776N** HARB JUANADA ERICA E71 JH  
BT ELBA 450H WK SLEEP TIGHT  
BT ELBA 51E

	CE	BW	WW	YW	MA	CM	SC	ST	DC	CW	RE	YG	MS	SMI
EPDs	9	-0.2	43	92	26	3	0.5	-	-	8	0.04	0.04	-0.14	38
	11	32	26	13	11	10	06	-	-	P	P	P	P	

This female has calved since the picture was taken but she is really something amazing. Even after calving she has still maintained her depth of rib and volume. She is big footed, super sound in her structure and very easy in her movement. This female is the epitome of a great brood cow. She sells with her young calf at her side by PBRs Upper Echelon. She is homozygous black, double polled and has a low birth of -0.2, weaning weight of 92 and milk of 26.

**LOT 17A - PBRs 64X** - Bull, 7.01.10, double black, double polled. Sired by PBRs Upper Echelon 820U.

**MAGS NADINE 110N** is one of the leading purebred homozygous black donor cows at P Bar S Ranch. What makes her unique is the fact that she is sired by the predictable sire DJ Gentleman In Black. Her dam is the all time great donor at Magness, MAGS Lady Ace. Lady Ace is responsible for the creation of some of the strongest and most predictable lines of cattle in our breed. She is a black and polled daughter of EXLR Intrigue from the CHAZ Miss Greta 7003G. She has earned a 27 or milk and scanned a 5.41 for marbling. MAGS Nadine 110N daughters and sons highlight this sale are some of the strongest in terms of performance and for sure predictable. Take a close look at these four daughters and we are certain you will agree with us that the Nadine family is something special.

# MAGS NADINE 110N daughters



Lot 18 -  
**PBRS Uneven Bars 898U**



Reference sire, **MAGS SASQUATCH**

## PRRS Uneven Bars 898U

Lot 18

PB Limousin (100/908) Cow 09.21.08 Double Polled PBRS 898U Double Black  
NPF 1928745

EXLR NEW GENERATION 071M AUTO BLACK DAKOTA 129J  
**MAGS SASQUATCH** EXLR LUVLY 084F  
MAGS FRUITFUL 487M EXLR LIMITED EDITION 765J  
WULFS FRUITFUL 6052F  
DJ GENTLEMAN IN BLACK COLE FIRST DOWN 46D  
**MAGS NADINE 110N** DJ ESSENCE  
MAGS LADY ACE EXLR INTRIGUE 361G  
CHAZ MISS GRETA 7003G

	CE	BW	WW	YW	MA	CM	SC	ST	DC	CW	RE	YG	MS	SMI
EPDs	10	0.9	31	66	24	5	0.2	-	20	18	0.47	-0.03	0.03	41
	P	36	30	15	11	P	09	-	P	P	P	P	P	

A.I. 12.12.09 to SYES User Friendly 524U; P.E. 1.05-2.02.10 to MAGS Tobacco 1555T.

## PBRS Ultimate Gal 895U

Lot 19

PB Limousin (100/90.8) Cow 09.20.08 Homo Polled PBRS 895U Homo Black  
NPF 1928742

EXLR NEW GENERATION 071M AUTO BLACK DAKOTA 129J  
**MAGS SASQUATCH** EXLR LUVLY 084F  
MAGS FRUITFUL 487M EXLR LIMITED EDITION 765J  
WULFS FRUITFUL 6052F  
DJ GENTLEMAN IN BLACK COLE FIRST DOWN 46D  
**MAGS NADINE 110N** DJ ESSENCE  
MAGS LADY ACE EXLR INTRIGUE 361G  
CHAZ MISS GRETA 7003G

	CE	BW	WW	YW	MA	CM	SC	ST	DC	CW	RE	YG	MS	SMI
EPDs	10	1.5	33	70	24	5	0.2	-	20	18	0.47	-0.03	0.03	41
	P	36	30	15	11	P	09	-	P	P	P	P	P	

A.I. 11.20.09 to Schilling's Talladega; P.E. 1.05-2.02.10 to MAGS Tobacco 1555T.

## PBRS Upper Class 8166U

Lot 20

PB Limousin (100/90.0) Cow  
NPF 1928748

09.20.08  
Double Polled

PBRS 8166U  
Homo Black

**DHVO ACE 128R**  
GPF BLAQUE RULON  
AMY JO DHAN 20L

**MAGS NADINE 110N**  
DJ GENTLEMAN IN BLACK  
MAGS LADY ACE

BLACK DIAMOND  
QUAIL RUN RAMONA BP  
BLACK CAT DHAN 152G  
GPF AMBER JO  
COLE FIRST DOWN 46D  
DJ ESSENCE  
EXLR INTRIGUE 361G  
CHAZ MISS GRETA 7003G

	CE	BW	WW	YW	MA	CM	SC	ST	DC	CW	RE	YG	MS	SMI
EPDs	5	3.2	48	86	25	1	0.7	-	14	23	0.60	-0.06	-0.02	44
	P	35	29	16	13	P	11	-	P	P	P	P	P	

A.I. 12.03.09 to PBRS Take this 744T; P.E. 1.05-2.02.10 to MAGS Tobacco 1555T.

## PBRS Under Cover 894U

Lot 21

PB Limousin (100/90.0) Cow  
NPF 1928741

09.19.08  
Double Polled

PBRS 894U  
Homo Black

**DHVO ACE 128R**  
GPF BLAQUE RULON  
AMY JO DHAN 20L

**MAGS NADINE 110N**  
DJ GENTLEMAN IN BLACK  
MAGS LADY ACE

BLACK DIAMOND  
QUAIL RUN RAMONA BP  
BLACK CAT DHAN 152G  
GPF AMBER JO  
COLE FIRST DOWN 46D  
DJ ESSENCE  
EXLR INTRIGUE 361G  
CHAZ MISS GRETA 7003G

	CE	BW	WW	YW	MA	CM	SC	ST	DC	CW	RE	YG	MS	SMI
EPDs	5	4.3	52	92	25	1	0.7	-	14	23	0.60	-0.06	-0.02	45
	P	35	29	16	13	P	11	-	P	P	P	P	P	

A.I. 12.13.09 to SYES User Friendly 524U; P.E. 1.05-2.02.10 to MAGS Tobacco 1555T.

# FALL CALVING first calf heifers



## LOT 22 - PBRS Upper Class 875U

## PBRS Upper Class 875U

Lot 22

Lim-Flex (75/67.3) Cow  
LFF 1927622

09.01.08  
Double Polled

PBRS 875U  
Double Black

**AUTO DOLLAR GENERAL 122R**  
LVLS SECRET WEAPON 4408K  
AUTO KYRIA 232K

**AUTO SASKIA 255S**  
CLLL NEW DIRECTION 394P  
EXAR EMPRESS 3185

LVLS FARMER 4G  
LVLS 408H  
AUTO HACKETT 702H  
WULFS HAPPINESS 8136H  
GPF BLAQUE RULON  
PRRK EXTRA BLAQUE STAR  
BON VIEW NEW DESIGN 1407  
KTK 9440 EMPRESS 108

	CE	BW	WW	YW	MA	CM	SC	ST	DC	CW	RE	YG	MS	SMI
EPDs	5	1.0	54	103	26	3	0.4	-	13	32	0.12	0.28	0.31	55
	19	31	27	17	11	18	13	-	P	P	P	P	P	

A.I. 11.29.09 to MAGS Unloosen 4604U; P.E. 1.05-2.02.10 to PBRS 418U.

PBRS Upper Class 875U is one of the amazing 75% Lim-Flex females in the sale. She is sired by the leading syndicated double homozygous outcross sire AUTO Dollar General 122R. Dollar General, owned by Brown, Magness and Pinegar has been a very influential sire in our breed and his daughters are really great. This Dollar daughter is from a daughter of CLLL New Direction that was a top purchase by P Bar S from the 2008 Pinegar Limousin sale. This young female has a 102 for yearling weight, 26 for milk, .31 for marbling and 55 for MTI.





**LOT 23 -  
PBRs Unconditional 884U**

**PBRs Unconditional 884U** *Lot 23*

PB Limousin (100/90.4) Cow 09.14.08 PBRs 884U  
NPF 1928733 Double Polled Black

GPFF BLAQUE RULON BLACK DIAMOND  
**DHVO DEUCE 132R** QUAIL RUN RAMONA BP  
AMY JO DHAN 20L GPFF AMBER JO  
MAGS LITTLE BROTHER EXLR DAKOTA 353G  
**MAGS NEW GAMES 169N** DJ ESSENCE  
MAGS GAMES WE PLAY 245L DVFC COOKIE MONSTER 108H  
MAGS GAMES WE PLAY

	CE	BW	WW	YW	MA	CM	SC	ST	DC	CW	RE	YG	MS	SMI
EPDs	4	1.5	45	75	21	0	0.6	-	17	43	0.55	0.01	-0.09	40
	P	35	30	18	11	P	12	-	P	P	P	P		

A.I. 1.03.10 to EF Main Stay 541M; P.E. 1.05-2.02.10 to MAGS Tobacco 1555T.

There is nothing more popular in our breed right now than a daughter of the two time national champion sire DHVO Deuce. This purebred female has it all working in her favor. Sired by Deuce and from a daughter of MAGS Little Brother back to the elite MAGS Games We Play 245L. This female sells either bred to the once reserve national champion EF Main Stay 541M or the JCL Lodestar 27L son, MAGS Tobacco 1555T.

**PBRs U R The One 8141U** *Lot 25*

Lim-Flex (63/55.1) Cow 11.16.08 PBRs 8141U  
LFF 1934830 Double Polled Homo Black

EF MAIN STAY 541M AUTO BLACK DAKOTA 129J  
**EF SMACK DOWN 764S** EXLR 231J  
M L PRUDENCE 427 V A R GATEWAY 4101  
M L PRUDENCE 9014  
CARROUSELS JIGSAW WULFS QUARTERBACK 4222B  
**BLACK CHERRY** ELOR BLACK LACE 2266B  
PCC 917J CHAZ FIRST CHOICE 6004F

	CE	BW	WW	YW	MA	CM	SC	ST	DC	CW	RE	YG	MS	SMI
EPDs	7	0.5	38	73	25	3	0.0	-	-	-4	0.10	-0.07	0.01	42
	P	32	24	09	07	P	05	-	-	17	15	15	15	

P.E. 1.05-2.02.10 to PBRs 418U.

Sired by the once reserve national champion EF Smack Down 764S and from the very consistent producing Black Cherry donor is PBRs 8141U. This young female is homozygous black and offers a low birth of 0.5, milking ability number of 25 and she scanned a 3.36 for IMF. She also scanned a 14.1 for REA as well. This female has the milking ability and the carcass traits all working in the buyers favor.

**PBRs Ultimate 8101U** *Lot 24*

PB Limousin (100/90.8) Cow 09.25.08 PBRs 8101U  
NPF 1927625 Polled Double Black

JCL LODESTAR 27L HUNTS HI-LITER 245G  
**KRVN PICANTE 036P** LOGAN'S CHEERLEADER 280G  
CHR KOKO EXLR HERITAGE 056H  
EXLR LONGSHOREMAN 327L BLACK MOLLY KDPI 62F  
**PBRs RUDY 561R** WULFS GUARDIAN 5074G  
PBRs ELECTRIC DREAMS 0383 EXLR LUVLY 084F  
MDRC TUBB LUCKY STRIKE  
MAGS LEXI

	CE	BW	WW	YW	MA	CM	SC	ST	DC	CW	RE	YG	MS	SMI
EPDs	7	1.9	45	87	22	4	0.2	-	-	-	-	-	-	0
	14	32	26	13	10	13	12	-	-	-	-	-	-	

A.I. 12.02.09 to SYES User Friendly 524U; P.E. 1.05-2.02.10 to PBRs 418U.

This black and polled first calf heifer is sired by KRVN Picante 036P, a son of JCL Lodestar 27L from a daughter of EXLR Heritage. This female offers a balanced set of epd's and sells either bred to the popular SYES User Friendly of the consistent sire PBRs 418U.

**PBRs 778U** *Lot 26*

Lim-Flex (50/45.1) Cow 10.16.08 PBRs 778U  
LFF 1933626 Double Polled Double Black

JCL LODESTAR 27L HUNTS HI-LITER 245G  
**KRVN PURSUIT OF GOLD 137P** LOGAN'S CHEERLEADER 280G  
LFL LACY 1007L MINE POLLED DRYDOCK 004H  
ALAW ELIZABETH 21E  
C A FUTURE DIRECTION 5321 GAR PRECISION 1680  
**BT QUEEN ESTHER 71N** C A MISS POWER FIX 308  
BT QUEEN ESTHER 164L HERO 6267 OF R R 2418  
BT QUEEN ESTHER 238J

	CE	BW	WW	YW	MA	CM	SC	ST	DC	CW	RE	YG	MS	SMI
EPDs	10	-0.8	47	88	29	4	0.2	-	-	25	0.07	0.12	0.18	50
	13	32	23	13	12	12	05	-	-	P	P	P	P	

A.I. 11.29.09 to EF Smack Down 746S; P.E. 12.15.09-2.02.10 to PBRs Safe Bet 6123S.

The number package of this young first calf heifer is as good as you would want. She has a -0.8 for birth, 29 for milk, .18 for marbling and 50 for MTI. She is strong numbered and represents a very powerful pedigree. Her sire is KRVN Pursuit of Gold 137P, a son of JCL Lodestar 27L. Her dam is a daughter of CA Future Direction 5321.



**LOT 27 -  
PBRs UR Special 8116U**

**PRRS UR Special 8116U** *Lot 27*

PB Limousin (100/89.0) Cow  
NPF 1933631

10.15.08  
Homo Polled

PBRs 8116U  
Homo Black

**GPFF BLAQUE RULON**  
BLACK DIAMOND  
QUAIL RUN RAMONA BP

**KRVN RASCAL 250R**  
DFLC NORTH STAR 25N  
DVFC ROLL ON 1003N

CANE RIDGE BLACK DRAK  
WULFS DIADEM 4260D  
LKCC TOMAHAWKS TOUCHDOWN  
AMBL FAVORITE GIRL 36W  
JCL LODESTAR 27L  
DFLC HBPC 20K  
GPFF BLAQUE RULON  
HALE MISS ORION

	CE	BW	WW	YW	MA	CM	SC	ST	DC	CW	RE	YG	MS	SMI
EPDs	5	1.7	46	83	18	0	0.6	-	-	24	0.76	-0.10	-0.11	41
	19	34	29	19	19	19	17	-	-	22	22	22	21	

A.I. 12.03.09 to SYES User Friendly 524U; P.E. 1.05-2.02.10 to MAGS Tobacco 1555T.

8116U is a double homozygous daughter of GPFF Blaque Rulon from a Kervin bred cow. This female offers a .76 for REA and has top carcass numbers of 12.3 for REA and 3.3 for IMF. She is strong across the board in her growth traits and offers the extreme thickness and performance needed to get your attention. Her mating to User Friendly or MAGS Tobacco either way will be a plus for the new owner.

**PBRs UR Rancy 8133U** *Lot 29*

Lim-Flex (50/43.7) Cow  
LFF 1933641

11.05.08  
Double Polled

PBRs 8133U  
Homo Black

**EXLR NEO 614N**  
AUTO BLACK DAKOTA 129J  
GREENWAY MISSEMULOUS 717

**KRVN REANNA 329R**  
CHR KING DIAMOND  
KRVN 912L

EXLR DAKOTA 353G  
DFLC JET SET BPC 34Y  
PINE DRIVE BIG SKY  
GREENWAY MISS EMULOUS7138  
BLACK DIAMOND  
CHR BLACK PAULA 010E  
FOSTER FULLBACK 705

	CE	BW	WW	YW	MA	CM	SC	ST	DC	CW	RE	YG	MS	SMI
EPDs	5	0.5	36	73	19	-1	0.3	-	-	-1	-0.12	0.11	-0.03	39
	15	32	26	13	12	14	10	-	-	19	18	18	17	

A.I. 12.13.09 to Schilling's Talladega; P.E. 1.05-2.02.10 to PBRs 418U.

This homozygous black 50% Lim-Flex heifer is sired by EXLR Neo 614N, a son of AUTO Black Dakota 129J. She is from a daughter of CHR King Diamond on the bottom side of her pedigree. This young heifer offers a low birth of 0.5 and scanned a 10.2 for REA and 3.8 for IMF. She is sired bred either to the good looking Talladega or PBRs 418U.

**BISK Una 829U** *Lot 28*

Lim-Flex (62/56.1) Cow  
LFF 1911414

03.27.08  
Homo Polled

BISK 829U  
Homo Black

**MAGS REMOTE**  
JCL LODESTAR 27L  
MAGS 13M

**SCC NETTIE 830N**  
GPFF BLAQUE RULON

HUNTS HI-LITER 245G  
LOGAN'S CHEERLEADER 280G  
MAGS JUMANJI  
WK QUEEN LASSIE 0332  
BLACK DIAMOND  
QUAIL RUN RAMONA BP

	CE	BW	WW	YW	MA	CM	SC	ST	DC	CW	RE	YG	MS	SMI
EPDs	9	0.0	50	92	21	2	0.7	-	13	26	0.33	0.04	0.01	45
	P	31	25	16	13	P	13	-	P	P	P	P	P	

P.E. 12.27.09-2.02.10 to PBRs 418U.

We are big fans of this very heavy muscled daughter of MAGS Remote. Now deceased he was a stout son of JCL Lodestar 27L that has left some amazing daughters who are now in lactation and doing a top job. This young female is from a daughter of GPFF Blaque Rulon from the Brian Skaggs program. She is double homozygous and we can't wait to see the kind of job she does in production with her future calf by PBRs 418U.

**PBRs 718U** *Lot 30*

Lim-Flex (50/44.0) Cow  
LFF 1919158

05.19.08  
Double Polled

PBRs 718U  
Double Black

**PBRs ROUGH RIDER 596R**  
MAGS KABOOM  
LYLL BLACK VERDICT 828G

**SEDGWICKS ANNIE 2456**  
RR 9440 SCOTCH CAP 1483  
SEDGWICKS ANNIE 4561

EXLR DAKOTA 353G  
MAGS GO IN STYLE  
JCL BLACK OUT  
D&M MISS DEW DROP 488C  
R R SCOTCHCAP 9440  
CAR DON MISS DEVOTIONB236  
G D A R NUGGET 6180  
SEDGWICKS ANNIE 43

	CE	BW	WW	YW	MA	CM	SC	ST	DC	CW	RE	YG	MS	SMI
EPDs	4	0.2	32	70	24	0	0.3	-	-	-	-	-	-	-
	13	32	26	12	13	12	05	-	-	-	-	-	-	-

718U offers the combination of low birth with high milk. She is sired by the MAGS Kaboom son PBRs Rough Rider 596R. She offers a 24 for milk and low birth of 0.2 and strong in her growth traits. This young heifer sired bred to the EF Smack Down, PBRs Upper Echelon 820U or MAGS Unmasked Man 4613U, a son of Rulon out of MAGS Paradise Canyon.

**LOT 30A - PBRs 074X** - Bull, black, polled, 08.24.10. Sired by PBRs Upper Echelon. BW: 68 lbs.

# PBRS 478U

## Lot 31

Lim-Flex (50/44.3) Cow  
LFF 1919147

04.27.08  
Homo Polled

PBRS 478U  
Homo Black

KRVN NASKAR 013N  
**PBRS NEXT GREAT 554R**  
MAGS NEXT DAY

R P BUSHWACKER 3 944  
**SEDGWICKS PRIDE EVER 7102**  
KWCC MISS PRIDE EVER 7109

GPFF BLAQUE RULON  
WL JU JU GAL 149J  
AUTO BLACK DAKOTA 129J  
AUTO NATASHA 273G  
R P 3RD BUSHWACKER  
R P NEW DESIGN MISS JUICE  
SEDGWICKS REBAR  
W C C MISS PRIDE EVER 264

	CE	BW	WW	YW	MA	CM	SC	ST	DC	CW	RE	YG	MS	\$MI
EPDs	9	-2.2	42	86	24	3	0.5	-	-	3	-0.23	0.24	0.19	48
	12	31	25	12	12	11	06	-	-	P	P	P	P	

PE. 11.19-12.14.09 to PBRS Upper Echelon 820U; PE. 12.14.09-1.05.10 to MAGS Unmasked Man 4613U.

This female is homozygous polled, homozygous black with a great number package. She has a low birth of -2.2, moderate yearling weight of 86 and milk of 24. We like her .19 for marbling and her overall power. She is has the bone, foot size and overall balance that we like in our females. This daughter of PBRS Next Great 554R is from the Angus female 7102. It is females like this 50% Lim-Flex that makes us appreciate the beef business.

# PBRS Up To The Second 872U

## Lot 33

PB Limousin (100/89.6) Cow  
NPF 1927621

08.21.08  
Double Polled

PBRS 872U  
Double Black

EXLR NEW GENERATION 071M  
**MAGS SASQUATCH**  
MAGS FRUITFUL 487M

PBR BLACK DAKOTA 001  
**PBRS JESSICA 0243**  
MAGS JESSICA

AUTO BLACK DAKOTA 129J  
EXLR LUVLY 084F  
EXLR LIMITED EDITION 765J  
WULFS FRUITFUL 6052F  
EXLR DAKOTA 353G  
TRAK GLORY  
WULFS GUARDIAN 5074G  
MAGS GO IN STYLE

	CE	BW	WW	YW	MA	CM	SC	ST	DC	CW	RE	YG	MS	\$MI
EPDs	11	-0.5	35	72	20	5	0.3	-	19	13	0.42	-0.06	-0.05	39
	15	33	27	12	12	13	07	-	P	P	P	P	P	

A.I. 12.16.09 to PBRS Take This 744T; PE. 1.05-2.02.10 to MAGS Tobacco 1555T.

The breed has really come to appreciate and admire most daughters of MAGS Sasquatch. He is a son of EXLR New Generation 017M from the breed leading donor MAGS Strawberry. His daughters are like him, they are very big footed and very sound in their structure. This Sasquatch daughter has the look and the performance needed to go into any program.

# PBRS UR A Fast One 8115U

## Lot 32

PB Limousin (100/90.1) Cow  
NPF 1933630

10.12.08  
Polled

PBRS 8115U  
Double Black

JCL LODESTAR 27L  
**KRVN PICANTE 036P**  
CHR KOKO

CARROUSELS PEAK POWER  
**PBRS STEPHANIE 699S**  
MAGS MAE

HUNTS HI-LITER 245G  
LOGAN'S CHEERLEADER 280G  
EXLR HERITAGE 056H  
BLACK MOLLY KDPI 62F  
GPFF BLAQUE RULON  
HC CHERISH  
LVLS POLLED BLACK JACK  
MAGS JODI

	CE	BW	WW	YW	MA	CM	SC	ST	DC	CW	RE	YG	MS	\$MI
EPDs	4	3.2	54	96	23	3	0.6	-	14	41	0.63	-0.04	-0.13	42
	16	33	27	14	11	15	13	-	P	19	18	18	17	

This daughter of KRVN Picante 036P is from a daughter of Carrousel's Peak Power back to a Polled Black Jack out of MAGS Jodi. This heifer offers a breed leading REA number of .63 and still maintains a 96 for yearling weight and 23 for milk. This black and polled heifer comes from the heart of the P Bar S Ranch purebred division and we think you will appreciate her on sale day.

**LOT 32A - PBRS 066X** - Heifer, black, polled, 08.15.10. Sired by PBRS Upper Echelon. BW: 67 lbs.

# PBRS UR A Hottie 888U

## Lot 34

PB Limousin (100/88.2) Cow  
NPF 1928736

09.16.08  
Homo Polled

PBRS 888U  
Double Black

GPFF BLAQUE RULON  
**DHVO TREY 133R**  
AMY JO DHAN 20L

AUTO BLACK DAKOTA 129J  
**MAGS NEXT DAY**  
AUTO NATASHA 273G

BLACK DIAMOND  
QUAIL RUN RAMONA BP  
BLACK CAT DHAN 152G  
GPFF AMBER JO  
EXLR DAKOTA 353G  
DFLC JET SET BPC 34Y  
TUBB GRINDER 749D  
MISS WOLFETTE 9051X

	CE	BW	WW	YW	MA	CM	SC	ST	DC	CW	RE	YG	MS	\$MI
EPDs	4	4.0	48	87	25	3	0.6	-	14	10	0.32	-0.11	-0.11	41
	P	35	29	17	11	P	P	-	P	P	P	P	P	

A.I. 11.29.09 to PBRS Take This 744T; PE. 1.05-2.02.10 to MAGS Tobacco 1555T.

This daughter of DHVO Trey 133R is from a daughter of AUTO Black Dakota 129J. She has a powerful pedigree and is one that is well bred. She offers a 25 for milk, 87 for yearling weight and .32 for REA. This homozygous polled purebred female sells carrying the service to either PBRS Take This 744T or MAGS Tobacco 1555T. Either way she is bred will be an attractive incentive to the new owner.



# SPRING BRED heifers

## JCL Lodestar 27L Lim-Flex



**LOT 35 -  
PBRS Wild Waitress 279W**

### PBRS Wild Waitress 279W

**Lot 35**

Lim-Flex (50/45.4) Cow  
LFF 1940524

03.29.09  
Homo Polled

PBRS 279W  
Homo Black

**JCL LODESTAR 27L**  
HUNTS HI-LITER 245G  
LOGAN'S CHEERLEADER 280G

**SEDGWICKS ERICA 5674**  
G A R PARAMOUNT  
SEDGWICKS ERICA 5671

WADDLES COBALT 3106  
TNUH MISS C245  
COLE FIRST DOWN 46D  
TTCC CONFIDENCE MAKER  
GAR PRECISION 1680  
G A R EXT 2114  
GDAR SVF TRAVELER 234D  
SEDGWICKS ERICA 5672

	CE	BW	WW	YW	MA	CM	SC	ST	DC	CW	RE	YG	MS	SMI
EPDs	12	-0.9	48	99	27	6	0.4	-	-	41	-0.13	0.37	0.41	56
	19	33	28	19	21	19	14	-	-	P	P	P	P	

A.I. 5.21.10 to *Wulf's Sirlain*; P.E. 7.2.10 to 7.26.10 to *Schillings Whiplash CDSX 17W*.

This is a very impressive 50% Lim-Flex daughter of JCL Lodestar 27L. She is out of a very impressive Angus female that is as consistent of a producer as there is on the ranch. 279W is extremely deep sided, square hiped and sound on her feet and legs. his double homozygous female has a 12 for CED, a 99 yearling EPD and a 56 SMTI.

### PBRS 549W

**Lot 36**

Lim-Flex (50/45.4) Cow  
LFF 1944344

04.18.09  
Homo Polled

PBRS 549W  
Homo Black

**JCL LODESTAR 27L**  
HUNTS HI-LITER 245G  
LOGAN'S CHEERLEADER 280G

**PBRS 397T**  
HOMEACRES DESIGNER E97  
HOMEACRES EDWINA D59

WADDLES COBALT 3106  
TNUH MISS C245  
COLE FIRST DOWN 46D  
TTCC CONFIDENCE MAKER  
EXAR EXCEED 1223  
HOMEACRES ERICA B3  
HOMEACRES TRAVELER A27  
HOMEACRES EDWINA 969

	CE	BW	WW	YW	MA	CM	SC	ST	DC	CW	RE	YG	MS	SMI
EPDs	-	-0.9	46	100	25	-	-	-	-	-	-	-	-	0
	-	P+	P+	P+	P	-	-	-	-	-	-	-	-	

A.I. 6.23.10 to *MAGS Landmark*; P.E. 7.2.10 to 7.26.10 to *Schillings Whiplash CDSX 17W*.

This 50% Lim-Flex female is tremendous in her profile. She is smooth in her shoulder and feminine in her head and neck. Sound footed and sure to have plenty of longevity, this female combines a -0.9 birthweight EPD with a 100 for yearling weight and a 25 on milk.

### PBRS What A Gal 519W

**Lot 37**

Lim-Flex (50/45.4) Cow  
LFF 1944341

04.16.09  
Homo Polled

PBRS 519W  
Homo Black

**JCL LODESTAR 27L**  
HUNTS HI-LITER 245G  
LOGAN'S CHEERLEADER 280G

**HOMEACRES EDWINA D59**  
HOMEACRES TRAVELER A27  
HOMEACRES EDWINA 969

WADDLES COBALT 3106  
TNUH MISS C245  
COLE FIRST DOWN 46D  
TTCC CONFIDENCE MAKER  
C R TRAVELER 574  
OCC REVOLUTION ROSE 850F  
N BAR EMULATION EXT  
1BHOMEACRES EDWINA J747

	CE	BW	WW	YW	MA	CM	SC	ST	DC	CW	RE	YG	MS	SMI
EPDs	12	-1.0	52	96	22	6	0.4	-	-	30	0.02	0.26	0.19	49
	P	P+	P+	P+	P	P	P	-	-	P	P	P	P	

A.I. 5.30.10 to *EF Smackdown*; P.E. 7.2.10 to 7.26.10 to *PBRS Ur the Bomb 8155U*.

Homozygous black and homozygous polled is this 50% Lim-Flex female. Sired by the proven and consistent JCL Lodestar 27L and out of a nice Traveler daughter. 519W is very balanced in her EPD's. She is broody in her look, deep sided and has a great disposition.

### PBRS 439W

**Lot 38**

Lim-Flex (50/45.4) Cow  
LFF 1944336

04.11.09  
Homo Polled

PBRS 439W  
Double Black

**JCL LODESTAR 27L**  
HUNTS HI-LITER 245G  
LOGAN'S CHEERLEADER 280G

**SEDGWICKS PRIDE 7984**  
MC CUMBER 204 MR WIX 920  
SEDGWICKS PRIDE 7987

WADDLES COBALT 3106  
TNUH MISS C245  
COLE FIRST DOWN 46D  
TTCC CONFIDENCE MAKER  
MR WIX OF MC CUMBER 204  
MISS WIX 298 OF MC CUMBER  
O C C BACKSTOP 888B  
SEDGWICKS PRIDE 8904

	CE	BW	WW	YW	MA	CM	SC	ST	DC	CW	RE	YG	MS	SMI
EPDs	12	-0.7	46	97	26	6	0.4	-	-	31	-0.19	0.20	0.09	46
	P	P+	P+	P+	P	P	P	-	-	P	P	P	P	

A.I. 6.12.10 to *SYES User Friendly 524U*; P.E. 7.2.10 to 7.26.10 to *Schillings Whiplash CDSX 17W*.

This homozygous polled female is one that you will certainly want to tie into. She has a 12 CED, 97 on yearling weight and a 26 for milk. This complete, stout made female will make a great replacement to your herd.



**LOT 39 -  
PBRs Winter 449W**

**PBRs Winter 449W** **Lot 39**

Lim-Flex (50/45.4) Cow                      04.11.09                      PBRs 449W  
LFF 1944337                                      Homo Polled                      Homo Black

**JCL LODESTAR 27L**                      HUNTS HI-LITER 245G                      WADDLES COBALT 3106  
LOGAN'S CHEERLEADER 280G                      TNUH MISS C245  
COLE FIRST DOWN 46D  
**LOUP RIVER BLACKCAP 23P9**                      TTCC CONFIDENCE MAKER  
SUMMITCRESTHIGHPRIME 0H29                      GARDENS PRIME TIME  
LOUP RIVER BLACKCAP 23L5                      SUMMITCREST MISSIE 2F55  
UMF CAVAN OF WYE 7915  
DODSWOOD BLACKCAP 680792F

CE	BW	WW	YW	MA	CM	SC	ST	DC	CW	RE	YG	MS	SMI
12	-1.2	50	92	20	6	0.3	-	-	34	-0.15	0.30	0.19	49
P	P+	P+	P+	P	P	P	-	-	P	P	P	P	

A.I. 5.31.10 to SYES User Friendly 524U; P.E. 7.2.10 to 7.26.10 to Schillings Whiplash CDSX 17W.

Another one of the many great JCL Lodestar 27L daughters in this sale, this homozygous black and homozygous polled female is sure to get your attention. She is long and strong down her top, powerful in her hip and stout in her stance. She combines calving ease and performance with a .19 for marbling and a 49 SMTI.

**PBRs Word Game 339W** **Lot 41**

Lim-Flex (50/45.4) Cow                      04.02.09                      PBRs 339W  
LFF 1944008                                      Homo Polled                      Homo Black

**JCL LODESTAR 27L**                      HUNTS HI-LITER 245G                      WADDLES COBALT 3106  
LOGAN'S CHEERLEADER 280G                      TNUH MISS C245  
COLE FIRST DOWN 46D  
**SEDGWICK'S EBLINETTE 8001**                      TTCC CONFIDENCE MAKER  
DALEBANKS EXTENDER 6012                      N BAR EMULATION EXT  
ROTH EBLINETTE 8006                      PRINCESS 4007 OFDALEBANKS  
LEACHMAN RIGHT TIME  
FAIRVIEW EBLINETTE 6001

CE	BW	WW	YW	MA	CM	SC	ST	DC	CW	RE	YG	MS	SMI
13	-2.9	50	103	24	6	0.4	-	-	44	-0.36	0.53	0.34	53
P	P	P	P	P	P	P	-	-	P	P	P	P	

A.I. 6.10.10 to LVLS Top Criteria 8862P; P.E. 7.2.10 to 7.26.10 to Schillings Whiplash CDSX 17W.

Perhaps this female has the best EPD combination in the sale. 339W has a -2.9 for birth, 103 for yearling EPD, a .34 marbling EPD and a 53 on terminal mainstream index. Not only is she double homozygous but she is stylish, stout made and square in her hip. This female has tremendous value on paper and will have in the pasture as well.

**PBRs 389W** **Lot 40**

Lim-Flex (50/45.4) Cow                      04.06.09                      PBRs 389W  
LFF 1944333                                      Homo Polled                      Homo Black

**JCL LODESTAR 27L**                      HUNTS HI-LITER 245G                      WADDLES COBALT 3106  
LOGAN'S CHEERLEADER 280G                      TNUH MISS C245  
COLE FIRST DOWN 46D  
**BT ECHO 33M**                      TTCC CONFIDENCE MAKER  
CALIFORNIA TRAVELER                      R R TRAVELER 5204  
KMK ECHO J29                      TEHAMA EISA ERICA Y699  
LEACHMAN RIGHT TIME  
TEHAMA ECHO G463

CE	BW	WW	YW	MA	CM	SC	ST	DC	CW	RE	YG	MS	SMI
14	-1.9	49	98	26	6	0.4	-	12	40	-0.39	0.53	0.45	56
P	P+	P+	P+	P	P	P	-	P	P	P	P	P	

Bred 5.28.10 to PBRs 418U; P.E. 7.2.10 to 7.26.10 to PBRs UR the Bomb 8155U.

This 50% Lim-Flex is double homozygous and one you can add to the load. These Lodestar daughters are very consistent and predictable in their genetic make up. 389W has tremendous EPD's, she is easy fleshing and sound in her stride.

**PBRs Way of Live 169W** **Lot 42**

Lim-Flex (50/45.4) Cow                      03.17.09                      PBRs 169W  
LFF 1940516                                      Homo Polled                      Homo Black

**JCL LODESTAR 27L**                      HUNTS HI-LITER 245G                      WADDLES COBALT 3106  
LOGAN'S CHEERLEADER 280G                      TNUH MISS C245  
COLE FIRST DOWN 46D  
**SEDGWICKS BLACKCAP 4364**                      TTCC CONFIDENCE MAKER  
R P BUSHWACKER 3 944                      R P 3RD BUSHWACKER  
SEDGWICKS BLACKCAP 4361                      R P NEW DESIGN MISS JUICE  
RR 9440 SCOTCH CAP 1483  
SEDGWICKS BLACKCAP 4366

CE	BW	WW	YW	MA	CM	SC	ST	DC	CW	RE	YG	MS	SMI
14	-2.8	43	97	23	6	0.3	-	-	32	-0.26	0.41	0.35	53
19	35	30	21	21	19	14	-	-	P	P	P	P	

A.I. 5.15.10 SYES User Friendly 524U; P.E. 7.2.10 to 7.26.10 to Schillings Whiplash CDSX 17W.

This JCL Lodestar 27L daughter is long bodied, bold in her rib and very fluent in her stride. She has a 14 CED, a .35 for marbling and a 53 SMTI. She is homozygous black and homozygous polled and out of a R P Bushwacker 3 944 dam.

# SPRING BRED

## heifers

### MAGS Sasquatch Lim-Flex



**LOT 43 -  
PBRs 409W**

### PBRs 409W

Lot 43

Lim-Flex (50/45.3) Cow  
LFF 1944335

04.07.09  
Homo Polled

PBRs 409W  
Homo Black

**MAGS SASQUATCH**  
EXLR NEW GENERATION 071M  
MAGS FRUITFUL 487M  
**BT ROSE 497N**  
BT TRAVELER 132K  
COCHANGUS ROSE J3  
AUTO BLACK DAKOTA 129J  
EXLR LUVLY 084F  
EXLR LIMITED EDITION 765J  
WULFS FRUITFUL 6052F  
SITZ TRAVELER 043  
BT EVERELDA ENTENSE 57D  
COCHANGUS TRAVELER 382  
COCHANGUS ROSE 8127

	CE	BW	WW	YW	MA	CM	SC	ST	DC	CW	RE	YG	MS	SMI
EPDs	10	0.3	37	72	30	2	0.0	-	-	16	-0.07	0.18	0.03	41
	P	P+	P+	P+	P	P	P	-	-	P	P	P	P	

A.I. 6.23.10 to SYES User Friendly 524U; P.E. 7.2.10 to 7.26.10 to PBRs UR the Bomb 8155U.

Sired by the syndicated and consistent breeding bull MAGS Sasquatch is this double homozygous 50% Lim-Flex female. Her dam is out of BT Traveler 132K. She has a 30 milk EPD and is positive for marbling. This female is strong and wide down her top, level in her hip and stands stout on all four corners. The mating to SYES User Friendly is sure work for the new owner.

### PBRs Word Taken 229W

Lot 45

Lim-Flex (50/45.3) Cow  
LFF 1940520

03.24.09  
Homo Polled

PBRs 229W  
Double Black

**MAGS SASQUATCH**  
EXLR NEW GENERATION 071M  
MAGS FRUITFUL 487M  
**SEDGWICKS LUCY 2368**  
G A R PARAMOUNT  
SEDGWICKS LUCY 3688  
AUTO BLACK DAKOTA 129J  
EXLR LUVLY 084F  
EXLR LIMITED EDITION 765J  
WULFS FRUITFUL 6052F  
GAR PRECISION 1680  
G A R EXT 2114  
SEDGWICKS DIAMOND14834924  
SEDGWICKS LUCY 3688

	CE	BW	WW	YW	MA	CM	SC	ST	DC	CW	RE	YG	MS	SMI
EPDs	8	0.1	35	76	24	2	-0.1	-	-	20	0.01	0.17	0.18	46
	13	34	28	12	12	12	04	-	-	P	P	P	P	

A.I. 5.21.10 to PBRs Take This 744T; P.E. 7.2.10 to 7.26.10 to PBRs Take This 744T.

Her sire MAGS Sasquatch is surprising cattlemen all over the country with the completeness, the eye appeal and the stoutness he is sire in his offspring. 229W is out of a nice, productive C A R Paramout dam, she has balance growth and milk number with very positive carcass traits.

### PBRs Western Wishes 129W

Lot 44

Lim-Flex (50/45.3) Cow  
LFF 1940514

03.12.09  
Homo Polled

PBRs 129W  
Double Black

**MAGS SASQUATCH**  
EXLR NEW GENERATION 071M  
MAGS FRUITFUL 487M  
**SEDGWICKS BARBARA 7044**  
G A R PRECISION 6769  
SEDGWICKS BARBARA 7043  
AUTO BLACK DAKOTA 129J  
EXLR LUVLY 084F  
EXLR LIMITED EDITION 765J  
WULFS FRUITFUL 6052F  
GAR PRECISION 1680  
G A R 6807 TRAVELER 673  
TC INFLENCE  
SEDGWICKS BARBARA 309

	CE	BW	WW	YW	MA	CM	SC	ST	DC	CW	RE	YG	MS	SMI
EPDs	10	-1.2	39	83	26	3	0.0	-	-	17	0.14	0.07	0.11	45
	12	34	28	13	11	10	04	-	-	P	P	P	P	

A.I. 6.23.10 to L.H. U-Haul; P.E. 7.2.10 to 7.26.10 to Schillings Whiplash CDSX 17W.

This homozygous polled female has a -1.2 birth EPD, a .14 for REA along with a .11 for marbling. This female, along with her sisters will make tremendous replacements for a operation wanting to take it to the next level. These females are functional, sound and very maternal. You can buy, and buy with confidence.

### PBRs What A Deal 269W

Lot 46

Lim-Flex (50/45.3) Cow  
LFF 1940523

03.28.09  
Homo Polled

PBRs 269W  
Homo Black

**MAGS SASQUATCH**  
EXLR NEW GENERATION 071M  
MAGS FRUITFUL 487M  
**SEDGWICKS ERICA 2229**  
RR 9440 SCOTCH CAP 1483  
SEDGWICKS ERICA 2296  
AUTO BLACK DAKOTA 129J  
EXLR LUVLY 084F  
EXLR LIMITED EDITION 765J  
WULFS FRUITFUL 6052F  
R R SCOTCHCAP 9440  
CAR DON MISS DEVOTIONB236  
GARDENS TRANSLATION 3200  
CIRCLE S ERICA 229

	CE	BW	WW	YW	MA	CM	SC	ST	DC	CW	RE	YG	MS	SMI
EPDs	10	-0.9	34	76	27	3	0.0	-	-	20	0.03	0.27	0.19	45
	13	34	28	13	11	12	04	-	-	P	P	P	P	

A.I. 5.14.10 to LVLS Top Criteria 8862P; P.E. 7.2.10 to 7.26.10 to PBRs UR The Bomb 8155U.

This daughter sired by MAGS Sasquatch is homozygous polled and homozygous black. She is a 50% Lim-Flex female that is very attractive and stout in her features. This replacement has a 27 milk EPD and a .19 for marbling combined with calving ease genetics and adequate growth.



**LOT 47 -  
PBRs Weekly Rate 239W**

*Bred 5.7.10 to Schillings Whiplash CDSX 17W; P.E. 7.2.10 to 7.26.10 to Schillings Whiplash CDSX 17W.*

Homozygous polled is this MAGS Sasquatch daughter that is out of Sedgwicks Pride Ever 7102. This female is thick ended, square hipped and big footed. She has a 28 milk EPD and a .27 for marbling.

**PBRs Weekly Rate 239W**

**Lot 47**

Lim-Flex (50/45.3) Cow  
LFF 1940521

03.24.09  
Homo Polled

PBRs 239W  
Double Black

**MAGS SASQUATCH**  
EXLR NEW GENERATION 071M  
MAGS FRUITFUL 487M

**SEDGWICKS PRIDE EVER 7102**  
R P BUSHWACKER 3 944  
KWCC MISS PRIDE EVER 7109

AUTO BLACK DAKOTA 129J  
EXLR LUVLY 084F  
EXLR LIMITED EDITION 765J  
WULFS FRUITFUL 6052F  
R P 3RD BUSHWACKER  
R P NEW DESIGN MISS JUICE  
SEDGWICKS REBAR  
W C C MISS PRIDE EVER 264

	CE	BW	WW	YW	MA	CM	SC	ST	DC	CW	RE	YG	MS	SMI
EPDs	9	-1.0	37	77	28	3	0.0	-	-	8	-0.34	0.27	0.27	48
	12	33	27	12	12	11	04	-	-	P	P+	P	P	



**LOT 48 -  
PBRs Wanted Woman 699W**

**SPRING BRED  
heifers  
MAGS Tobacco Lim-Flex**

**PBRs Wanted Woman 699W**

**Lot 48**

Lim-Flex (50/44.8) Cow  
LFF 1944352

05.20.09  
Homo Polled

PBRs 699W  
Homo Black

**MAGS TOBACCO**  
JCL LODESTAR 27L  
MAGS CHEERS 304L

**P BAR S ELBA 50R**  
EXAR LAVA 1940  
BT ELBA 776N

HUNTS HI-LITER 245G  
LOGAN'S CHEERLEADER 280G  
EXLR INTRIGUE 361G  
MAGS GOOD TIMES  
E&B 1483 SCOTHCAMAN 5041  
EXAR JUMBO BLACKBIRD 7707  
HARB NUGGET 760 J H  
BT ELBA 450H

*P.E. 7.2.10 to 7.26.10 to PBRs UR The Bomb 8155U.*

A true sale highlight sired by our herd bull MAGS Tobacco. 699W is double homozygous with tremendous EPD's. She is strong and wide down her top, powerful through her hip and quarter and stands on a big foot. We think you will appreciate the value of this heifer come sale day as we do.

	CE	BW	WW	YW	MA	CM	SC	ST	DC	CW	RE	YG	MS	SMI
EPDs	9	-0.9	42	87	24	4	0.4	-	-	17	-0.30	0.28	0.15	44
	P	P+	P+	P+	P	P	P	-	-	P	P	P	P	

## PBRs 609W

Lot 49

Lim-Flex (50/44.8) Cow  
LFF 1944348

05.02.09  
Homo Polled

PBRs 609W  
Homo Black

JCL LODESTAR 27L  
**MAGS TOBACCO**  
MAGS CHEERS 304L  
TOP SECRET 9757 E A R  
**BT BLACKCAP LASS 550M**  
BT BLACKCAP LASS 152D

HUNTS HI-LITER 245G  
LOGAN'S CHEERLEADER 280G  
EXLR INTRIGUE 361G  
MAGS GOOD TIMES  
TRAVELER POWER 137 EAR  
RM BLACK MAGIC 7574 E A R  
JOLLY R JIM 0044  
BT BLACKCAP LASS 159B

	CE	BW	WW	YW	MA	CM	SC	ST	DC	CW	RE	YG	MS	\$MI
EPDs	10	-1.5	39	83	17	4	0.4	-	-	18	-0.17	0.22	0.01	42
	P	P+	P+	P+	P	P	P	-	-	P	P	P	P	

A.I. 6.24.10 to SYES User Friendly 524U; P.E. 7.2.10 to 7.26.10 to Schillings Whiplash CDSX 17W.

609W is a 50% Lim-Flex prospect that is homozygous for the black and the polled trait. Her EPD's exemplify the calving ease and genetics that she can bring to the herd of her new owner. Complete in her make up and broody in her design is a female we think has a bright future in production.

## PBRs 509W

Lot 50

Lim-Flex (50/44.8) Cow  
LFF 1944340

04.15.09  
Homo Polled

PBRs 509W  
Homo Black

JCL LODESTAR 27L  
**MAGS TOBACCO**  
MAGS CHEERS 304L  
DALEBANKS EXTENDER 6012  
**SEDGWICKS BLACKCAP 463**  
SEDGWICKS BLACKCAP 461

HUNTS HI-LITER 245G  
LOGAN'S CHEERLEADER 280G  
EXLR INTRIGUE 361G  
MAGS GOOD TIMES  
N BAR EMULATION EXT  
PRINCESS 4007 OFDALEBANKS  
GAR PRECISION 1680  
SEDGWICKS BLACKCAP 469

	CE	BW	WW	YW	MA	CM	SC	ST	DC	CW	RE	YG	MS	\$MI
EPDs	10	-2.2	33	85	23	4	0.4	-	-	24	-0.36	0.46	0.36	52
	P	P+	P+	P+	P	P	P	-	-	P	P	P	P	

Bred 7.17.10 PBRs UR The Bomb 8155U; P.E. 7.2.10 to 7.26.10 to PBRs UR The Bomb 8155U.

Double homozygous and good is this daughter of MAGS Tobacco. She has a -2.2 for birthweight, 85 for yearling EPD and a .36 for marbling. The EPD's this female possesses gives her a 52 for mainstream terminal index. 509W is moderate in her frame and easy in her condition. She should work well in any type of management conditions.

## PBRs Wedding Planner 259W

Lot 51

Lim-Flex (50/44.8) Cow  
LFF 1940522

03.26.09  
Homo Polled

PBRs 259W  
Homo Black

JCL LODESTAR 27L  
**MAGS TOBACCO**  
MAGS CHEERS 304L  
SUMMITCREST SCOTCHCAPOB45  
**SUMMITCREST IDEAL 4P36**  
SUMMITCREST IDEAL 2G11

HUNTS HI-LITER 245G  
LOGAN'S CHEERLEADER 280G  
EXLR INTRIGUE 361G  
MAGS GOOD TIMES  
SCOTCH CAP  
SUMMITCREST HEIRESS OT09  
R R SCOTCHCAP 9440  
SUMMITCREST IDEAL 1A82

	CE	BW	WW	YW	MA	CM	SC	ST	DC	CW	RE	YG	MS	\$MI
EPDs	9	-1.4	31	72	23	4	0.4	-	-	17	-0.25	0.37	0.21	44
	12	31	25	13	12	11	05	-	-	P	P	P	P	

A.I. 5.21.10 to Wulf's Sirloin; P.E. 7.2.10 to 7.26.10 to PBRs UR The Bomb 8155U.

Very complete and has a nice disposition is this Lim-Flex female. Out of our herd sire MAGS Tobacco and a great producing Summitcrest Scotchcap OB45 daughter.

# SPRING BRED

## heifers

### PBRs Sure Thing Lim-Flex



LOT 52 -  
PBRs Western Dancer 529W

## PBRs Western Dancer 529W

Lot 52

Lim-Flex (50/44.3) Cow  
LFF 1944342

04.16.09  
Homo Polled

PBRs 529W  
Double Black

KRVN NASKAR 013N  
**PBRs SURE THING 644S**  
MAGS NATASHA  
BT BANDO 196J  
**BT MINA 288M**  
BT MINA 63D

GPFF BLAQUE RULON  
WL JU JU GAL 149J  
AUTO BLACK DAKOTA 129J  
MAGS JULIET  
BON VIEW BANDO 598  
G D A R RACHEL 838  
RT RIGHT COMBINATION 29Z  
MI NIGHT

	CE	BW	WW	YW	MA	CM	SC	ST	DC	CW	RE	YG	MS	\$MI
EPDs	8	-1.1	46	83	16	2	0.3	-	-	23	-0.41	0.54	0.28	47
	P	P+	P+	P+	P	P	P	-	-	P	P	P	P	

A.I. 5.30.10 to LVLS Top Criteria 8862P; P.E. 7.2.10 to 7.26.10 to PBRs Take This 744T.

Sired by PBRs Sure Thing 644S is this homozygous polled heifer that is a sure thing. We love the depth of flank, the substance of bone and the cow look this prospect has. She is flawless in her design, long down her top into her hip and easy fleshing. She has a .28 marbling EPD.



## PBRs Westside 469W

Lot 53

Lim-Flex (50/44.3) Cow  
LFF 1940526

04.12.09  
Homo Polled

PBRs 469W  
Homo Black

KRVN NASKAR 013N  
**PBRs SURE THING 644S**  
MAGS NATASHA

DALEBANKS EXTENDER 6012  
**SEDGWICKS GEORGINA 3004**  
SEDGWICKS GEORGINA 3009

GPFf BLAQUE RULON  
WL JU JU GAL 149J  
AUTO BLACK DAKOTA 129J  
MAGS JULIET  
N BAR EMULATION EXT  
PRINCESS 4007 OFDALEBANKS  
SEDGWICKS DIAMOND14834924  
SEDGWICKS GEORGINA 149

	CE	BW	WW	YW	MA	CM	SC	ST	DC	CW	RE	YG	MS	SMI
EPDs	8	-2.6	43	78	24	2	0.3	-	-	19	-0.06	0.24	0.01	41
	13	30	24	12	12	12	04	-	-	P	P	P	P	

Bred 5.27.10 to Schillings Whiplash CDSX 17W; P.E. 7.2.10 to 7.26.10 to Schillings Whiplash CDSX 17W.

This double homozygous female is balanced for all traits including calving ease, growth, milk and carcass. She smooth in her shoulder and sound in her feet and legs. Her maternal grandsire is the proven Angus sire N Bar Emulation EXT.

## PBRs World Problems 579W

Lot 54

Lim-Flex (50/44.3) Cow  
LFF 1944346

04.27.09  
Homo Polled

PBRs 579W  
Double Black

KRVN NASKAR 013N  
**PBRs SURE THING 644S**  
MAGS NATASHA

BT RIGHT TIME 24J  
**BT BLACKCAP LASS 504R**  
BT BLACKCAP LASS 550M

GPFf BLAQUE RULON  
WL JU JU GAL 149J  
AUTO BLACK DAKOTA 129J  
MAGS JULIET  
LEACHMAN RIGHT TIME  
SITZ EVERELDA ENTENSE 190  
TOP SECRET 9757 E A R  
BT BLACKCAP LASS 152D

	CE	BW	WW	YW	MA	CM	SC	ST	DC	CW	RE	YG	MS	SMI
EPDs	7	-1.3	43	85	20	2	0.3	-	-	18	0.02	0.24	-0.04	40
	P	P+	P+	P+	P	P	P	-	-	P	P	P	P	

P.E. 7.2.10 to 7.26.10 to PBRs Take This 744T.

Here is another PBRs Sure Thing 644S daughter to add to your load. She is deep sided and broody in her make up. This female is one that you can turn out with confidence. Her dam is sired by BR Right Time 24J.



**SPRING  
BRED  
heifers**

## LOT 55 - PBRs Watcha Doin 927W

## PBRs Watcha Doin 927W

Lot 55

Lim-Flex (50/44.2) Cow  
LFF 1944010

02.16.09  
Homo Polled

PBRs 927W  
Double Black

EF MAIN STAY 541M  
**EF SMACK DOWN 764S**  
M L PRUDENCE 427

EXAR PROBLEM SOLVER 4181  
**EXLR LUCY 029S**  
JCL LUCY 29P

AUTO BLACK DAKOTA 129J  
EXLR 231J  
V A R GATEWAY 4101  
M L PRUDENCE 9014  
TWIN VALLEY PRECISIONE161  
EXAR MISS TRAVELER Q38  
JCL LODESTAR 27L  
AUTO LUCY 280K

	CE	BW	WW	YW	MA	CM	SC	ST	DC	CW	RE	YG	MS	SMI
EPDs	11	-1.7	38	80	28	3	0.0	-	-	-4	-0.41	0.24	0.29	50
	P	31	19	10	09	P	P	-	-	P	P	P	P	

A.I. 6.23.10 to Wulf's Sirloin; P.E. 7.2.10 to 7.26.10 to Schillings Whiplash CDSX 17W.

Sired by the past national champion bull EF Smackdown is this 50% Lim-Flex female out of EXLR Lucy 029S. she is strong down her top, very feminine in her head and neck and blends very nicely in her neck, shoulder and rib. 927W has a 11 for CED, a 28 for milk and a .29 for marbling.



**LOT 56 -  
PBRs Write It Down 937W**

**PBRs Write It Down 937W** Lot **56**

PB Limousin (100/87.6) Cow 04.01.09 Homo Polled PBRs 937W Homo Black

**WLR DIRECT HIT** KRVN NASKAR 013N GPFf BLAQUE RULON  
MAGS NIGHT AMBUSH WL JU JU GAL 149J  
ANDERS JAG AUTO BLACK DAKOTA 129J  
**COLE 57N** MISS WULFETTE 6230F  
GREENWOODPOLLED455ROCKET  
ANDERS GEMINI  
COLE FIRST DOWN 46D  
COLE 34G COLE 69Y

	CE	BW	WW	YW	MA	CM	SC	ST	DC	CW	RE	YG	MS	\$MI
EPDs	4	3.5	47	84	14	4	0.6	-	6	37	0.71	-0.09	-0.09	41
	P	P	P	P	P	P	P	-	P	P	P	P	P	

A.I. 6.13.10 to PBRs Take This 744T; P.E. 7.2.10 to 7.26.10 to PBRs Take This 744T.

Double homozygous and sired by WLR Direct Hit is this purebred female out of COLE 57N. This spring calving female has tremendous extension down her top and is heavy boned and big footed.

**PBRs 649W** Lot **58**

Lim-Flex (50/44.3) Cow 05.10.09 Homo Polled PBRs 649W Homo Black

**PBRs NEXT GREAT 554R** KRVN NASKAR 013N GPFf BLAQUE RULON  
MAGS NEXT DAY WL JU JU GAL 149J  
SUMMITCRESTHIGHPRIME 0H29 AUTO BLACK DAKOTA 129J  
**BT VIXON 414N** AUTO NATASHA 273G  
GARDENS PRIME TIME  
SUMMITCREST MISSIE 2F55  
BT VIXON 15J B T FREEWAY 91F  
BT VIXON 286E

	CE	BW	WW	YW	MA	CM	SC	ST	DC	CW	RE	YG	MS	\$MI
EPDs	8	0.4	58	94	27	3	0.4	-	-	9	-0.14	0.20	0.07	44
	P	P+	P+	P+	P	P	P	-	-	P	P	P	P	

A.I. 6.17.10 to LVLS Top Criteria 8862P; P.E. 7.2.10 to 7.26.10 to PBRs UR The Bomb 8155U.

This homozygous black and homozygous polled female is sired by our herd bull PBRs Next Great 554R who is a KRVN Naskar 013N son. We are very impressed with the progeny from this bull and think you will to. 649W has a .4 birth weight EPD and a 58 for weaning weight.

**PBRs Wister 39W** Lot **57**

Lim-Flex (50/44.5) Cow 03.06.09 Homo Polled PBRs 39W Homo Black

**DHVO TREY 133R** GPFf BLAQUE RULON BLACK DIAMOND  
AMY JO DHAN 20L QUAIL RUN RAMONA BP  
BLACK CAT DHAN 152G  
R P BUSHWACKER 3 944 GPFf AMBER JO  
**SEDGWICKS BLACKBIRD 2481** R P 3RD BUSHWACKER  
SEDGWICKS BLACKBIRD 4811 R P NEW DESIGN MISS JUICE  
T C DIVIDEND 963  
SEDGWICKS BLACKBIRD 195

	CE	BW	WW	YW	MA	CM	SC	ST	DC	CW	RE	YG	MS	\$MI
EPDs	7	-1.1	38	77	26	-1	0.3	-	-	16	-0.01	0.19	0.20	47
	13	34	28	15	12	12	08	-	-	P	P	P	P	

A.I. 5.22.10 to L.H. U-Haul; P.E. 7.2.10 to 7.26.10 to PBRs UR The Bomb 8155U.

The sire of this female, DHVO Trey 133R is siring progeny that is taking the breed by storm. They are not only winning in the show ring but also in the pasture. This female will be no exception and we think you will agree when you see her. She is homozygous polled and homozygous black, a 50% Lim-Flex and has very nice numbers to go with an exceptional prospect.

**PBRs Whitney 904W** Lot **59**

Lim-Flex (63/55.6) Cow 01.23.09 Homo Polled PBRs 904W Homo Black

**MAGS SCOTLAND** BR MIDLAND TWIN VALLEY PRECISIONE161  
MAGS MARQUEE BR ROYAL LASS 7036-19  
EXLR DAKOTA 353G  
MAGS JEWEL  
CARROUSELS JIGSAW WULFS QUARTERBACK 4222B  
**BLACK CHERRY** ELOR BLACK LACE 2266B  
PCC 917J CHAZ FIRST CHOICE 6004F

	CE	BW	WW	YW	MA	CM	SC	ST	DC	CW	RE	YG	MS	\$MI
EPDs	3	1.8	44	80	21	1	0.2	-	-	15	0.13	0.09	0.24	51
	P	31	19	09	08	P	P	-	-	P	P	P	P	

A.I. 5.9.10 to EF Smack Down; P.E. 7.2.10 to 7.26.10 to PBRs Take This 744T.

Sired by the National Champion bull MAGS Scotland is this 62% Lim-Flex female. She is homozygous for both the black and polled trait. She has a .24 for marbling and a 51 mainstream terminal index value.



Morris

**LOT 61 -  
PBRS Wish On A Star 935W**

**PBRS Word Game 948W** *Lot 60*

Lim-Flex (75/66.2) Cow 04.09.09 Double Polled PBRS 948W Double Black

**MAGS TWAIN** AUTO DOLLAR GENERAL 122R LVLS SECRET WEAPON 4408K  
THOMAS PATRICIA 1911 GAR PRECISION 1680  
THOMAS PATRICIA 1176  
**MAGS NATASHA** AUTO BLACK DAKOTA 129J EXLR DAKOTA 353G  
MAGS JULIET DFLC JET SET BPC 34Y  
CHAZ FIRST CHOICE 6004F  
SLVL SABLE COOKIE 381E

	CE	BW	WW	YW	MA	CM	SC	ST	DC	CW	RE	YG	MS	SMI
EPDs	5	2.2	56	106	28	5	0.3	-	-	36	0.23	0.19	0.15	51
	P	P	P	P	P	P	P	-	-	P	P	P	P	P

PE. 7.2.10 to 7.26.10 to PBRS UR The Bomb 8155U.

948W is sired by the senior herd sire in the Hayhook program MAGS Twain. This 75% Lim-Flex female is out of the great MAGS Natasha. She has a 56 weaning and a 106 yearling EPD respectfully. Those growth numbers combined with a .23 REA and a .15 marbling makes this replacement one of the most complete pedigreed heifer in the sale.

**PBRS Win Big 969W** *Lot 62*

Lim-Flex (75/66.5) Cow 05.13.09 Homo Polled PBRS 969W Double Black

**RLAY RULER 13N** GPFF BLAQUE RULON BLACK DIAMOND  
MISS NATRONA 10D LKCC TOMAHAWKS TOUCHDOWN  
HONY POLLED QUEEN 903X  
**MAGS ROAD HOME** EXAR NEW DESIGN 2997 BON VIEW NEW DESIGN 1407  
LEACHMAN EVERGREEN 8020  
MAGS MAJOR ATTITUDE 149M COLE WOLF HUNT  
CANE RIDGE DESTINY 356D

	CE	BW	WW	YW	MA	CM	SC	ST	DC	CW	RE	YG	MS	SMI
EPDs	8	0.8	45	85	21	1	0.2	-	-	3	0.21	-0.03	0.03	45
	15	30	25	12	11	14	07	-	-	P	P	P	P	P

PE. 7.2.10 - 7.26.10 to PBRS Take This 744T.

This homozygous polled female is sired by RLAY Ruler 13N and out of a nice EXAR New Design 2997 dam. Her sire is sired by GPFF Blaque Rulon and this female is typical of the great attributes that Rulon puts in his daughters. This stoutness and growth combined with the softness and design of her dam MAGS Road Home make her a replacement you will want to look at closely.

**PBRS Wish On A Star 935W** *Lot 61*

PB Limousin (100/89.9) Cow 03.23.09 Homo Polled PBRS 935W Homo Black

**AUTO DOLLAR GENERAL 122R** LVLS SECRET WEAPON 4408K LVLS FARMER 4G  
AUTO KYRIA 232K LVLS 408H  
AUTO HACKETT 702H  
**AUTO SHAMELESS 417S** WULFS HAPPINESS 8136H  
GPF BLAQUE RULON  
PRRK EXTRA BLAQUE STAR  
EXLR DAKOTA 353G  
NP SHAMELESS HUSSEY 2037G

	CE	BW	WW	YW	MA	CM	SC	ST	DC	CW	RE	YG	MS	SMI
EPDs	3	2.3	54	101	26	3	0.5	-	14	34	0.50	0.05	0.07	48
	20	32	26	17	12	19	14	-	P	P	P	P	P	P

A.I. 5.14.10 to Wulfs Sirloin; PE. 7.2.10 to 7.26.10 to PBRS Take This 744T.

Sired by the multiple trait leading sire AUTO Dollar General and out of Auto Shameless is this purebred female that is homozygous polled and homozygous black. She has tremendous numbers highlighted by a 54 weaning EPD and a 101 yearling EPD. She is strong topped, has extra extension in her neck and is thick in her quarter.

**PBRS Whats Next 974W** *Lot 63*

PB Limousin (100/87.0) Cow 05.22.09 Homo Polled PBRS 974W Double Black

**RLAY RULER 13N** GPFF BLAQUE RULON BLACK DIAMOND  
MISS NATRONA 10D LKCC TOMAHAWKS TOUCHDOWN  
HONY POLLED QUEEN 903X  
**PBRS SWEET SALLY** AUTO BLACK DAKOTA 129J EXLR DAKOTA 353G  
MAGS JESSICA DFLC JET SET BPC 34Y  
WULFS GUARDIAN 5074G  
MAGS GO IN STYLE

	CE	BW	WW	YW	MA	CM	SC	ST	DC	CW	RE	YG	MS	SMI
EPDs	7	-0.1	35	72	16	3	0.3	-	-	8	0.47	-0.12	-0.17	35
	16	31	20	13	12	15	P	-	-	P	P	P	P	P

PE. 7.2.10 - 7.26.10 to PBRS Take This 744T.

This purebred female is homozygous polled and double black. She has a .47 REA EPD and is balanced for growth and milk. This combination of genetics, include sires such as GPFF Blaque Rulon and AUTO Black Dakota. This is a great buying opportunity.



Morris

**LOT 64 -  
PBRs Watch This 934W**

**PBRs Watch This 934W**

**Lot 64**

Lim-Flex (75/65.6) Cow  
LFF 1944012

03.20.09  
Homo Polled

PBRs 934W  
Homo Black

**PBRs TAKE THIS 744T**  
MAGS NAPELLA

**BBPB SURPRIZE 4T**  
BBPB SURPRIZE 138X 522P

LVLS SECRET WEAPON 4408K  
AUTO KYRIA 232K  
ANDERS JAG  
AUTO CITY NIGHTS 214H  
TC MOONSHINE 001  
EXAR DIXIE ERICA 0456  
JCL 73J  
CBLR POLLED SURPRIZE 138X

	CE	BW	WW	YW	MA	CM	SC	ST	DC	CW	RE	YG	MS	\$MI
EPDs	8	-0.1	37	79	20	4	0.3	-	-	-	-	-	-	0
	11	25	19	08	07	10	04	-	-	-	-	-	-	-

PE. 7.2.10 to 7.26.10 to PBRs UR The Bomb 8155U.

This female exemplifies the cattle her sire PBRs Take This 744T produces. Deep bodied, smooth shouldered, very balanced in her design and make up and easy in her flesh. 934W is a 75% Lim-Flex that is double homozygous and one that you will certainly appreciate when you see her.

**EXLR Emulous 123W**

**Lot 65**

Lim-Flex (38/33.3) Cow  
LFF 1925957

03.11.09  
Double Polled

EXLR 123W  
Double Black

**BR MIDLAND**  
BR ROYAL LASS 7036-19

**EXLR EMULOUS 8007T**  
EXLR EMULOUS 7209P

TWIN VALLEY PRECISIONE161  
GAR PRECISION 1680  
WCC BLACKCAP C9  
S A F NEUTRON  
S A F ROYAL LASS 7036  
JCL LODESTAR 27L  
MAGS 13M  
RADS BLACK PRODIGY  
EXLR MISS EMULOUS 463K

	CE	BW	WW	YW	MA	CM	SC	ST	DC	CW	RE	YG	MS	\$MI
EPDs	10	-0.9	48	89	18	1	0.2	-	9	33	-0.40	0.55	0.62	62
	P	30	23	20	18	P	P	-	P	P	P	P	P	

A.I. 6.10.10 to MAGS Landmark; PE. 7.2.10 to 7.26.10 to PBRs Take This 744T.

This female is sired by the high marbling Angus sire BR Midland and is double black and double polled. She has a .62 marbling EPD and we think the mating to the to selling herd sire MAGS Landmark will be tremendous.

**AUTO 623W**

**Lot 66**

PB Limousin (100/88.8) Cow  
NPF 1928304

03.20.09  
Double Polled

AUTO 623W  
Double Black

**AUTO FULL THROTTLE 771R**  
AUTO MISS DIAMOND 3747N

**AUTO PRUDENSE 614T**  
EXLR MOLLY 7103K

GPFF BLAQUE RULON  
BLACK DIAMOND  
QUAIL RUN RAMONA BP  
ANDERS JAG  
D&M MISS MERCEDES 0190U  
IBRR BLACK SHADOW  
BLACK INK POLLED JINGLE  
EXLR DAKOTA 353G  
EXLR MOLLY 343G

	CE	BW	WW	YW	MA	CM	SC	ST	DC	CW	RE	YG	MS	\$MI
EPDs	4	0.6	43	79	17	1	0.4	-	-	11	0.55	-0.09	-0.08	41
	13	30	19	13	08	11	P	-	-	P	P	P	P	

A.I. 5.14.10 to Wulf's Sirloin; PE. 7.2.10 to 7.26.10 to PBRs Take This 744T.

This double polled and double black female is one you will appreciate. She has a .6 birth weight EPD and a .55 for REA. She is a high performing prospect that is broody in her design and easy fleshing.

**Progressive Lim-Flex Genetics**  
**Sedgwicks ANNIE 8111 cow family**

**SEDGWICKS ANNIE 8111**

**Lot 67**

Angus Cow  
AAA 14106285

02.10.01

8111  
Black

**BON VIEW NEW DESIGN 1407**  
BON VIEW PRIDE 664

**SEDGWICKS ANNIE 8111**  
SEDGWICKS ANNIE 4561

V D A R NEW TREND 315  
B/R BLACKCAP EMPRESS 76  
G A R SLEEP EASY 1009  
BON VIEW PRIDE 1551  
TEHAMA BANDO 155  
G A R RITO 260  
G D A R NUGGET 6180  
SEDGWICKS ANNIE 43

	CE	BW	WW	YW	MA	CM	SC	ST	DC	CW	RE	YG	MS	\$MI
EPDs	9	0.4	26	55	23	10	-	-	-	4	0.15	-	-	-
	-	-	-	-	-	-	-	-	-	-	-	-	-	-

	CE	BW	WW	YW	MA	CM	SC	ST	DC	CW	RE	YG	MS	\$MI
EPDs	11	-2.5	37	81	28	5	0.5	-	-	20	-0.34	0.38	0.37	52
	P	P+	P	P	P	P	P	-	-	P	P	P	P	

A.I. 5.21.10 to AHCC West Wind; PE. 6.04-7.27.10 to PBRs 8153.

**LOT 67A - PBRs 320X** - Lim-Flex (50/44.8) Heifer; homo polled; double black; 03.16.10; PBRs 320X; LFF 1960310. Sired by MAGS Tobacco.

**PBRs 178U**

**Lot 68**

Lim-Flex (50/45.4) Cow  
LFF 1919131

03.17.08  
Homo Polled

PBRs 178U  
Homo Black

**JCL LODESTAR 27L**  
LOGAN'S CHEERLEADER 280G

**SEDGWICKS ANNIE 8111**  
SEDGWICKS ANNIE 8117

HUNTS HI-LITER 245G  
WADDLES COBALT 3106  
TNUH MISS C245  
COLE FIRST DOWN 46D  
TTCC CONFIDENCE MAKER  
B/R NEW DESIGN 036  
BON VIEW PRIDE 664  
W C C BANDO B88  
SEDGWICKS ANNIE 4561

	CE	BW	WW	YW	MA	CM	SC	ST	DC	CW	RE	YG	MS	\$MI
EPDs	14	-2.7	43	92	28	6	0.4	-	12	38	-0.22	0.39	0.41	55
	20	36	30	22	23	20	15	-	P	P	P	P	P	

**LOT 68A - PBRs 63X** - Heifer; double polled; double black; 06.22.10; PBRs 63X. Sired by PBRs Upper Echelon 820U.

# Progressive Lim-Flex Genetics

## Tye J ROYAL LASS cow family



**LOT 69 -  
PBRs Winning Ways 29W**

Morris



**LOT 70 -  
TYE J Royal Lass**

Morris

### PBRs Winning Ways 29W

Lot **69**

Lim-Flex (50/44.5) Cow  
LFF 1940509

02.16.09  
Homo Polled

PBRs 29W  
Homo Black

GPFF BLAQUE RULON  
**DHVO DEUCE 132R**  
AMY JO DHAN 20L

MCC TRAVELER 234D WCC  
**TYE J ROYAL LASS**  
STEDEMS ROYAL LASS 303

BLACK DIAMOND  
QUAIL RUN RAMONA BP  
BLACK CAT DHAN 152G  
GPFF AMBER JO  
GDAR SVF TRAVELER 234D  
B L R ACF ELBA 8053  
S A NEUTRON 377  
SAF ROYAL LASS 0252

	CE	BW	WW	YW	MA	CM	SC	ST	DC	CW	RE	YG	MS	SMI
EPDs	5	0.8	57	101	25	-2	0.7	-	-	52	0.32	0.20	0.07	48
	14	31	26	13	09	13	08	-	-	P	P	P	P	

*Selling half interest with the option to double double up.*

*A.I. 5.21.10 to LH U-Haul; P.E. 7.02-7.26.10 to PBRs Take This 744T.*

Here is one of the great females to sell in this entire sale and in the entire breed! She is a 50% Lim-Flex daughter of DHVO Deuce from the elite Angus female TYEJ Royal Lass. This heifer has it all in that she is so pretty up through her front end, easy in her fleshing ability and amazing in her profile. She is a big league show heifer and has so much potential as a donor is will scare you. This female homozygous polled, homozygous black and has a 100 for yearling weight, 25 for milk and scanned a 3.24 for IMF. I urge you to practice your gold swing ... try and win \$5,000 and get some help from P Bar S to put towards this investment.

### TYE J Royal Lass

Lot **70**

Angus Cow  
AAA 15751687

04.10.06

TJ303  
Black

GDAR SVF TRAVELER 234D  
**MCC TRAVELER 234D WCC**  
B L R ACF ELBA 8053

S A NEUTRON 377  
**STEDEMS ROYAL LASS 303**  
SAF ROYAL LASS 0252

TRAVELER 124 G D A R  
G D A R FOREVER LADY 718  
N BAR EMULATION EXT  
DAVIS ELBA 6062  
S A F NEUTRON  
S A QUEEN SUSAN 102  
S A F LUCKY  
S A F ROYAL LASS 5233

	CE	BW	WW	YW	MA	CM	SC	ST	DC	CW	RE	YG	MS	SMI
EPDs	-	-	-	-	-	-	-	-	-	-	-	-	-	-

	CE	BW	WW	YW	MA	CM	SC	ST	DC	CW	RE	YG	MS	SMI
EPDs	5	2.0	54	102	24	3	0.4	-	-	-	-	-	-	0
	P	P+	P	P	P	P	P	-	-	-	-	-	-	

*A.I. 5.20.10 to MAGS Landmark; P.E. 6.04-7.27.10 to PBRs 8156.*

**LOT 70A - PBRs 80X** - Lim-Flex (50/43.5) Heifer; homo polled; double black; 02.25.10; PBRs 80X; LFF 1960300. Sired by CTCA Buckeye Bull 8261U.

# Sedgwicks GEORGINA 4792 cow family



**LOT 71A -  
PBRS 270X**

## Sedgwicks Georgina 4792

Lot 71

Angus Cow 10.21.02 4792  
AAA 14475896 Black

CONNEALY DATELINE  
**PLATTEMERE DATABASE**  
PLATTEMERE REVA 109  
O C C BACKSTOP 888B  
**SEDGWICKS GEORGINA 4796**  
SEDGWICKS GEORGINA 14

D H D TRAVELER 6807  
EILA EILA OF CONANGA  
B/R NEW DESIGN 036  
PLATTEMERE REVA 98  
D H D TRAVELER 6807  
REVOLUTION ROSE OF R R 9239  
R R 9440 SCOTCH CAP 1483  
SEDGWICKS GEORGINA 149

	CE	BW	WW	YW	MA	CM	SC	ST	DC	CW	RE	YG	MS	\$MI
EPDs	5	2.0	38	78	22	3	-	-	-	18	0.45	-	-	-
	P	P+	P	P	P	P	P	-	-	P	P	P	P	P

A.I. 5.20.10 to AHCC West Wind; P.E. 6.04-7.27.10 to PBRS 8156.

**LOT 71A - PBRS 270X** - Lim-Flex (50/44.9) Heifer; homo polled; double black; 03.08.10; PBRS 270X; LFF 1960298. Sired by SYES User Friendly 524U.

## PBRS Wooden Cross 179W

Lot 72

Lim-Flex (50/45.4) Cow 03.18.09 PBRS 179W  
LFF 1940517 Homo Polled Homo Black

HUNTS HI-LITER 245G  
**JCL LODESTAR 27L**  
LOGAN'S CHEERLEADER 280G  
PLATTEMERE DATABASE  
**SEDGWICKS GEORGINA 4792**  
SEDGWICKS GEORGINA 4796

WADDLES COBALT 3106  
TNUH MISS C245  
COLE FIRST DOWN 46D  
TTCC CONFIDENCE MAKER  
CONNEALY DATELINE  
PLATTEMERE REVA 109  
O C C BACKSTOP 888B  
SEDGWICKS GEORGINA 14

	CE	BW	WW	YW	MA	CM	SC	ST	DC	CW	RE	YG	MS	\$MI
EPDs	13	-1.8	51	105	28	6	0.4	-	-	30	-0.06	0.23	0.16	49
	P	P	P	P	P	P	P	-	-	P	P	P	P	P

A.I. 05.14.10 EF Smack Down; P.E. 7.02-7.26.10 to Schilling's Whiplash CDSX 17W.

# Homeacres GILDA D26 cow family

## Homeacres Gilda D26

Lot 73

Angus Cow 02.17.03 D26  
AAA 14531695 Black

G D A R OSCAR 711  
**HOMEACRES PLATINUM 723**  
HOMEACRES HANA 103  
S A F TRAVELER 203  
**HOMEACRES GILDA 567**  
HOMEACRES GILDA 935

BALDRIDGE OSCAR  
L T FOREVER LADY 395 G D A R  
Q A S TRAVELER 23-4  
HOMEACRES FLORA 839  
Q A S TRAVELER 23-4  
S A F LADY MAID 008  
WHITMIRE K T K  
HOMEACRES BEE 73

	CE	BW	WW	YW	MA	CM	SC	ST	DC	CW	RE	YG	MS	\$MI
EPDs	9	0.4	26	55	23	10	-	-	-	4	0.15	-	-	-
	P	P+	P	P	P	P	P	-	-	-	-	-	-	0

A.I. 5.20.10 to DHVO Trey 133R; P.E. 6.04-7.27.10 to PBRS 8156.

**LOT 73A - PBRS 70X** - Lim-Flex (50/44.2) Heifer; homo polled; double black; 02.25.10; PBRS 70X; LFF 1960314. Sired by PBRS Take This 744T.

## PBRS Waterfall 69W

Lot 74

Lim-Flex (50/45.3) Cow 03.09.09 PBRS 69W  
LFF 1940511 Homo Polled Homo Black

EXLR NEW GENERATION 071M  
**MAGS SASQUATCH**  
MAGS FRUITFUL 487M  
HOMEACRES PLATINUM 723  
**HOMEACRES GILDA D26**  
HOMEACRES GILDA 567

AUTO BLACK DAKOTA 129J  
EXLR LUVLY 084F  
EXLR LIMITED EDITION 765J  
WULFS FRUITFUL 6052F  
G D A R OSCAR 711  
HOMEACRES HANA 103  
S A F TRAVELER 203  
OMEACRES GILDA 935

	CE	BW	WW	YW	MA	CM	SC	ST	DC	CW	RE	YG	MS	\$MI
EPDs	10	-1.5	27	57	27	3	-0.1	-	-	18	0.07	0.07	0.00	38
	P	P	P	P	P	P	P	-	-	P	P	P	P	P

A.I. 5.14.10 to LH U-Haul; P.E. 7.02-7.26.10 to Schilling's Whiplash CDSX 17W.

# Homacres Laurie D51

Lot 75

Angus Cow AAA 15086086 03.18.03 D51 Black

G D A R OSCAR 711  
**HOMEACRES PLATINUM 723**  
 HOMEACRES HANA 103  
 V R S TRAVELER 9375  
**HOMEACRES LAURIE J984**  
 HOMEACRES R D J LAURIE 518

BALDRIDGE OSCAR  
 L T FOREVER LADY 395 G D A R  
 Q A S TRAVELER 23-4  
 HOMEACRES FLORA 839  
 M B TRAVELER 1043  
 MARSHA MAID 25  
 S A F TRAVELER 203  
 HOMEACRES R D J LOREN 144

EPDs	CE	BW	WW	YW	MA	CM	SC	ST	DC	CW	RE	YG	MS	SMI
	5	1.3	29	45	18	4	-	-	-	-	-	-	-	-

EPDs	CE	BW	WW	YW	MA	CM	SC	ST	DC	CW	RE	YG	MS	SMI
	6	0.4	52	93	23	2	0.3	-	-	27	0.33	0.00	0.04	47
	P	P+	P	P	P	P	P	-	-	P	P	P	P	

A.I. 5.21.10 to DHVO Trey 133R; P.E. 6.04-7.27.10 to PBRs 8147.

LOT 75A - PBRs 30X - Lim-Flex (50/44.5) Heifer; double polled; double black; 02.21.10; PBRs 30X; LFF 1960301. Sired by WULFS Titus 2149T.

# PBRs Wintex 159W

Lot 76

Lim-Flex (50/45.4) Cow LFF 1940515 03.17.09 Homo Polled PBRs 159W Homo Black

HUNTS HI-LITER 245G  
**JCL LODESTAR 27L**  
 LOGAN'S CHEERLEADER 280G  
 HOMEACRES PLATINUM 723  
**HOMEACRES LAURIE D51**  
 HOMEACRES LAURIE J984

WADDLES COBALT 3106  
 TNUH MISS C245  
 COLE FIRST DOWN 46D  
 TTCC CONFIDENCE MAKER  
 G D A R OSCAR 711  
 HOMEACRES HANA 103  
 V R S TRAVELER 9375  
 HOMEACRES RDJ LAURIE 518

EPDs	CE	BW	WW	YW	MA	CM	SC	ST	DC	CW	RE	YG	MS	SMI
	13	-2.0	44	86	22	6	0.3	-	-	34	0.04	0.19	0.14	47
	19	34	29	19	20	19	14	-	-	P	P	P	P	

A.I. 5.22.10 to MAGS Landmark; P.E. 7.02-7.26.10 to Schilling's Whiplash CDSX 17W.

# BT Everelda Entense 110M

Lot 77

Angus Cow AAA 14251568 01.22.02 110M Black

BON VIEW BANDO 598  
**BON VIEW BANDO 1394**  
 BON VIEW ERIANNA 131  
 WOODHILL RESOLUTION  
**BT EVERELDA ENTENSE 473G**  
 BT EVERELDA ENTENSE 3F

TEHAMA BANDO 155  
 BON VIEW DORA 56  
 BON VIEW PARAGON 2108  
 BON VIEW ERIANNA 259  
 LEACHMAN PROMPTER  
 GT MISS TRAVELER 58  
 WESTWIND RITO 8503 D J H 019  
 SITZ EVERELDA ENTENSE 190

EPDs	CE	BW	WW	YW	MA	CM	SC	ST	DC	CW	RE	YG	MS	SMI
	3	2.9	31	63	15	7	-	-	-	17	0.02	-	-	-

EPDs	CE	BW	WW	YW	MA	CM	SC	ST	DC	CW	RE	YG	MS	SMI
	4	2.4	43	82	23	-2	0.3	-	-	20	0.11	0.11	0.08	45
	P	P+	P	P	P	P	P	-	-	P	P	P	P	

A.I. 5.21.10 to MAGS Sasquatch 1462S; P.E. 6.04-7.27.10 to PBRs 8147.

LOT 77A - PBRs 260X - Lim-Flex (50/44.5) Heifer; homo polled; double black; 03.08.10; PBRs 260X; LFF 1960306. Sired by DHVO Trey 133R.

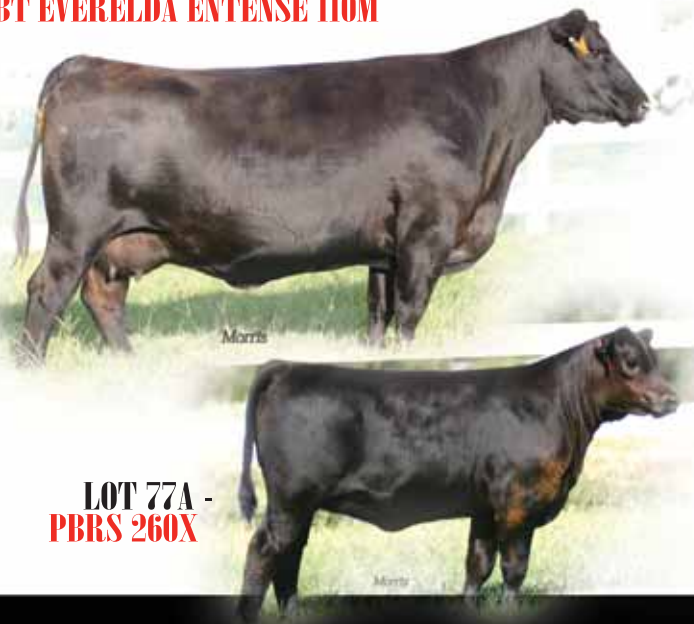
# Homeacres LAURIE D51 cow family



LOT 76 - PBRs Wintex 159W

# BT EVERELDA ENTENSE 110M cow family

LOT 77 - BT EVERELDA ENTENSE 110M



LOT 77A - PBRs 260X



Morris **LOT 78 -**  
**PBRs Widow Woman 209W**

**PBRs Widow Woman 209W**

**Lot 78**

Lim-Flex (50/44.5) Cow  
LFF 1940519

03.22.09  
Double Polled

PBRs 209W  
Homo Black

GPFf BLAQUE RULON  
**DHVO DEUCE 132R**  
AMY JO DHAN 20L  
BON VIEW BANDO 1394  
**BT EVERELDA ENTENSE 110M**  
BT EVERELDA ENTENSE 473G

BLACK DIAMOND  
QUAIL RUN RAMONA BP  
BLACK CAT DHAN 152G  
GPFf AMBER JO  
BON VIEW BANDO 598  
BON VIEW ERIANNA 131  
WOODHILL RESOLUTION  
BT EVERELDA ENTENSE 3F

	CE	BW	WW	YW	MA	CM	SC	ST	DC	CW	RE	YG	MS	SMI
EPDs	5	0.2	49	90	23	-1	0.6	-	-	48	0.30	0.18	0.09	47
	13	35	29	17	14	12	08	-	-	P	P	P	P	

A.I. 6.23.10 to LH U-Haul; P.E. 7.02-7.26.10 to PBRs Take This 744T.

**ANGUS Cows**  
**w/Lim-Flex, MAJOR Show Heifer prospects at side**



Morris

**LOT 79A -**  
**PBRs 220X**



Morris

**LOT 80A -**  
**PBRs 60X**

**BT Susanna 522R**

**Lot 79**

Angus Cow  
AAA 14956825

02.48.05

522R  
Black

HYLINE RIGHT TIME 338  
**HYLINE RIGHT WAY 781**  
HYLINE ELLEN 86  
V A R NEW DESIGN 0313  
**BT SUSANNA 511M**  
V A R SUSANNA 0019

LEACHMAN RIGHT TIME  
HYLINE PRIDE 265  
HYLINE S V F RITO 1116  
HYLINE ELLEN 9062  
B/R NEW DESIGN 323  
N BAR PRIMROSE 2424  
SITZ S L S RAINMAKER 7596  
V A R SUSANNA 8131

	CE	BW	WW	YW	MA	CM	SC	ST	DC	CW	RE	YG	MS	SMI
EPDs	-1	4.6	48	81	19	-	-	-	-	14	-	-	-	-
	-	-	-	-	-	-	-	-	-	-	-	-	-	-

	CE	BW	WW	YW	MA	CM	SC	ST	DC	CW	RE	YG	MS	SMI
EPDs	5	1.1	62	104	25	-2	0.7	-	-	44	0.25	0.14	-0.05	45
	p	P+	P	P	P	P	P	-	-	P	P	P	P	

A.I. 6.24.10 to Spring Creeks Urlacher 311U; P.E. 6.25-7.27.10 to MAGS Tobacco 1555T.

**LOT 79A - PBRs 220X** - Lim-Flex (50/44.5) Heifer; double polled; double black; 03.05.10; PBRs 220X; LFF 1960302. Sired by DHVO Deuce 132R.

**Sedgwicks Barbara 4174**

**Lot 80**

Angus Cow  
AAA 14906638

02.07.04

4174  
Black

G A R PRECISION 1680  
**G A R PARAMOUNT**  
G A R EXT 2114  
TC DIVIDEND 963  
**SEDGWICK'S BARBARA 4171**  
SEDGWICKS BARBARA 4171

TEHAMA BANDO 155  
919 G A R 856  
N BAR EMULATION EXT  
G A R SCOTCH CAP 887  
LEACHMAN PROMPTER  
T C ERICA EILEEN 6006  
G D A R NUGGET 6180  
SEDGWICKS BARBARA 322

	CE	BW	WW	YW	MA	CM	SC	ST	DC	CW	RE	YG	MS	SMI
EPDs	6	2.3	32	64	22	7	-	-	-	15	0.20	-	-	-
	-	-	-	-	-	-	-	-	-	-	-	-	-	-

	CE	BW	WW	YW	MA	CM	SC	ST	DC	CW	RE	YG	MS	SMI
EPDs	6	1.3	54	103	26	1	0.3	-	-	34	0.13	0.21	0.31	56
	P	P	P	P	P	P	P	-	-	P	P	P	P	

A.I. 5.22.10 to Wulf's Titus 2149T; P.E. 6.04-7.27.10 to PBRs 8147

**LOT 80A - PBRs 60X** - Lim-Flex (50/44.5) Heifer; double polled; double black; 02.25.10; PBRs 60X; LFM 1960312. Sired by WULFS Titus 2149T.





**LOT 81 -  
BT Eco 33M**



**LOT 81A -  
PBR5 540X**

**BT Echo 33M**

**Lot 81**

Angus Cow 01.15.02 33M  
AAA 14427567 Black

R R TRAVELER 5204  
**CALIFORNIA TRAVELER**  
TEHAMA EISA ERICA Y699  
LEACHMAN RIGHT TIME  
**KMK ECHO J29**  
TEHAMA ECHO G463

Q A S TRAVELER 23-4  
ERISKAY OF ROLLIN ROCK 3302  
PARAMONT AMBUSH 2172  
TEHAMA EISA ERICA W602  
N BAR EMULATION EXT  
LEACHMAN ERICA 0025  
PAPA DURABULL 9805  
TEHAMA ECHO C316

	CE	BW	WW	YW	MA	CM	SC	ST	DC	CW	RE	YG	MS	SMI
EPDs	10	-0.2	33	69	21	10	-	-	-	6	-	-	-	-
	-	-	-	-	-	-	-	-	-	-	-	-	-	-
	9	-0.9	44	88	28	4	0.4	-	-	34	-0.24	0.38	0.34	53
	P	P+	P	P	P	P	O	-	-	P	P	P	P	P

A.I. 6.06.10 to AHCC West Wind; P.E. 6.25-7.27.10 to MAGS Tobacco 1555T.

**LOT 81A - PBR5 540X** - Lim-Flex (50/45.0) Heifer; double polled; double black; 05.04.10; PBR5 540X; LFF 1960304. Sired by PBR5 Top Hand 724T.

**BT Pride 41N**

**Lot 82**

Angus Cow 01.18.03 41N  
AAA 14554532 Black

B/R NEW DESIGN 036  
**BON VIEW NEW DESIGN 878**  
BON VIEW GAMMER 85

SITZ S L S RAINMAKER 7596  
**BT PRIDE 1058**  
PRIDE 9044 B C A R

V D A R NEW TREND 315  
B/R BLACKCAP EMPRESS 76  
BON VIEW BANDO 598  
BON VIEW GAMMER 233  
G D A R RAINMAKER 340  
SLS BARBARA PERFECTION 2571  
V D A R LUCYS BOY  
HYLINE PRIDE 25

	CE	BW	WW	YW	MA	CM	SC	ST	DC	CW	RE	YG	MS	SMI
EPDs	7	1.7	40	72	24	-	-	-	-	6	-	-	-	-
	-	-	-	-	-	-	-	-	-	-	-	-	-	-
	8	-1.0	41	81	28	3	0.4	-	-	8	0.09	0.10	0.02	42
	P	P+	P	P	P	P	P	-	-	P	P	P	P	P

A.I. 6.07.10 to MAGS Landmark; P.E. 6.25-7.27.10 to MAGS Tobacco 1555T.

**LOT 82A - PBR5 550X** - Lim-Flex (50/44.6) Heifer; double polled; double black; 05.03.10; PBR5 550X; LFF 1960305. Sired by PBR5 Sure Thing 644S.

**Sedgwicks Lucky 2691**

**Lot 83**

Angus Cow 10.10.01 2691  
AAA 1400917 Black

N BAR EMULATION EXT  
**DALEBANKS EXTENDER 6012**  
PRINCESS 4007 OF DALEBANKS

O C C CORPORAL 895C  
**SEDGWICKS LUCY 2697**  
SEDGWICKS LUCY 269

EMULATION N BAR 5522  
N BAR PRIMROSE 2424  
G D A R TRAVELER 71  
PRINCESS 2180 OF DALEBANKS  
D H D TRAVELER 6807  
ROLLIN ROCK BLACKBIRD 1304  
G D A R NUGGET 6180  
SEDGWICKS LUCY 187

	CE	BW	WW	YW	MA	CM	SC	ST	DC	CW	RE	YG	MS	SMI
EPDs	10	-0.6	36	69	17	8	-	-	-	6	-	-	-	-
	-	-	-	-	-	-	-	-	-	-	-	-	-	-
	14	-3.4	39	79	27	6	0.3	-	-	27	-0.02	0.34	0.16	45
	P	P+	P	P	P	P	P	-	-	P	P	P	P	P

A.I. 5.21.10 to AHCC West Wind; P.E. 6.04-7.27.10 to PBR5 8147.

**LOT 83A - PBR5 100X** - Lim-Flex (50/44.9) Heifer; homo polled; double black; 02.27.10; PBR5 100X; LFF 1960311. Sired by SYES User Friendly 524U.



**LOT 84 -  
BT Heather 292M**



**LOT 86 -  
Segwicks Princess 2985**

**BT Heather 292M** **Lot 84**

Angus Cow 02.01.02 292M  
AAA 14251602 Black

O S U 6T6 ULTRA  
**B T ULTRAVOX 297E**  
FINKS VIXON 788

D H D TRAVELER 6807  
**FELLMAN HEATHER 8416**  
MISS F Y SPADE 6088 F B A R

S S TRAVELER 6T6  
D F EMPRESS 6079  
A A R NEW TREND  
FINKS VIXON 423  
Q A S TRAVELER 23-4  
BEMINDFUL MAID D H D 0807  
HOFF SPADE S C 456  
J R S HEATHER 347U

EPDs	CE	BW	WW	YW	MA	CM	SC	ST	DC	CW	RE	YG	MS	\$MI
	8	1.0	39	74	14	8	-	-	-	3	-	-	-	-

EPDs	CE	BW	WW	YW	MA	CM	SC	ST	DC	CW	RE	YG	MS	\$MI
	8	-0.8	47	91	27	4	0.4	-	-	29	-0.02	0.19	0.08	46

A.I. 6.06.10 to MAGS Unloosen 4604U; P.E. 6.25-7.27.10 to MAGS Tobacco 1555T.

**LOT 84A - PBR 390X** - Lim-Flex (50/45.0) Heifer; double polled; double black; 04.01.10; PBR 390X; LFF 1960307. Sired by PBR Top Hand 724T.

**Segwicks Princess 2985** **Lot 86**

Angus Cow 01.26.02 2985  
AAA 14628499 Black

TRAVELER 124 G D A R  
**GDAR SVF TRAVELER 234D**  
G D A R FOREVER LADY 718

MC CUMBER 124 TRAVELER 212  
**SEGWICKS PRINCESS 3950**  
SEGWICKS PRINCESS 3956

Q A S TRAVELER 23-4  
RACHEL RITO 813 G D A R  
BALDRIDGE OSCAR  
L T FOREVER LADY 395 G D A R  
TRAVELER 124 G D A R  
MISS WIX 365 OF MC CUMBER  
HYLINE SECRET AGENT 122  
SEGWICKS PRINCESS 7203

EPDs	CE	BW	WW	YW	MA	CM	SC	ST	DC	CW	RE	YG	MS	\$MI
	-1	5.5	44	70	25	1	-	-	-	6	0.54	-	-	-

EPDs	CE	BW	WW	YW	MA	CM	SC	ST	DC	CW	RE	YG	MS	\$MI
	8	-0.2	48	91	29	4	0.5	-	-	24	-0.21	0.29	0.23	50

A.I. 5.22.10 to CTCA Buckeye Bull 8261U; P.E. 6.04-7.27.10 PBR 8147.

**LOT 86A - PBR 440X** - Lim-Flex (50/44.8) Heifer; homo polled; double black; 04.09.10; PBR 440X; LFF 1960308. Sired by MAGS Tobacco.

**Homeacres Gilda D50** **Lot 85**

Angus Cow 02.07.04 4174  
AAA 14531699 Black

G D A R OSCAR 711  
**HOMEACRES PLATINUM 723**  
HOMEACRES HANA 103

D F SLEEP TIGHT 5121  
**HOMEACRES GILDA 978**  
HOMEACRES GILDA 935

BALDRIDGE OSCAR  
L T FOREVER LADY 395 G D A R  
Q A S TRAVELER 23-4  
HOMEACRES FLORA 839  
G A R SLEEP EASY 1009  
D F PATSY ANNIE 3055  
WHITMIRE K T K  
HOMEACRES BEE 73

EPDs	CE	BW	WW	YW	MA	CM	SC	ST	DC	CW	RE	YG	MS	\$MI
	6	0.7	31	50	16	7	-	-	-	5	0.10	-	-	-

EPDs	CE	BW	WW	YW	MA	CM	SC	ST	DC	CW	RE	YG	MS	\$MI
	5	0.2	54	97	25	1	0.3	-	-	34	0.25	0.02	-0.01	46

A.I. 5.20.10 to CTCA Buckeye Bull 8261U; P.E. 6.04-7.27.10 to PBR 8156.

**LOT 85A - PBR 10X** - Lim-Flex (50/44.5) Cow; double polled; double black; 02.18.10; PBR 10X; LFF 1960313. Sired by WULFS Titus 2149T.

**Sedgwicks Erica 8432** **Lot 87**

Angus Cow 04.01.02 8432  
AAA 14426416 Black

R R FERDINAND 758D  
**MC CUMBER DAKOTA 9023**  
MISS WIX 365 OF MC CUMBER

V D A R NORTHERN EXPOSURE  
**SEDGWICKS ERICA 8433**  
SEDGWICKS ERICA 554

R R 9440 SCOTCH CAP 1483  
BLACKCAP OF R R 5367  
SHOSHONE 247 P J M  
MISS WIX 294 OF MC CUMBER  
RITO 2100 G D A R  
V D A R BEAUTY 930  
G D A R NUGGET 6180  
SEDGWICKS ERICA 488

EPDs	CE	BW	WW	YW	MA	CM	SC	ST	DC	CW	RE	YG	MS	\$MI
	-3	3.0	30	57	12	3	-	-	-	2	-	-	-	-

EPDs	CE	BW	WW	YW	MA	CM	SC	ST	DC	CW	RE	YG	MS	\$MI
	6	0.4	52	93	23	2	0.3	-	-	27	0.33	0.00	0.04	47

A.I. 5.23.10 to DHVO Deuce 132R; P.E. 6.04-7.27.10 to PBR 8153.

**LOT 87A - PBR 30X** - Lim-Flex (50/44.5) Heifer; double polled; double black; 02.21.10; PBR 30X; LFF 1960301. Sired by WULFS Titus 2149T.

# COLE 57N

## sons

# HERD SIRES



**LOT 88 -**  
**PBRs Western Slope 915W**

## PBRs Western Slope 915W

Lot 88

PB Limousin (100/88.5) Bull  
NPM 1938347

01.30.09  
Homo Polled

PBRs 915W  
Homo Black

**MAGS SASQUATCH**  
EXLR NEW GENERATION 071M  
MAGS FRUITFUL 487M

**COLE 57N**  
ANDERS JAG  
COLE 34G

AUTO BLACK DAKOTA 129J  
EXLR LUVLY 084F  
EXLR LIMITED EDITION 765J  
WULFS FRUITFUL 6052F  
GREENWOODPOLLED455ROCKET  
ANDERS GEMINI  
COLE FIRST DOWN 46D  
COLE 69Y

	CE	BW	WW	YW	MA	CM	SC	ST	DC	CW	RE	YG	MS	SMI
EPDs	9	2.5	41	79	18	5	0.2	-	12	21	0.36	0.01	0.02	43
	P	33	28	13	10	P	09	-	P	P	P	P	P	

We love the combination of eye appeal and genetics that Western slope possesses. He is homozygous polled and homozygous black and out of MAGS Sasquatch. This pure-bred prospect is smooth in his design, rugged and durable in his structure and is stout and wide based. He has a 9 for calving ease and a .36 REA EPD. You can buy with confidence that this young sire will have the longevity to breed cows for many seasons. BW: 78 lbs.; WW: 748 lbs; YW: 1204 lbs.

## PBRs Wyoming Wind 939W

Lot 89

PB Limousin (100/87.6) Bull  
NPM 1945719

04.02.09  
Homo Polled

PBRs 939W  
Homo Black

**WLR DIRECT HIT**  
KRVN NASKAR 013N  
MAGS NIGHT AMBUSH

**COLE 57N**  
ANDERS JAG  
COLE 34G

GPFF BLAQUE RULON  
WL JU JU GAL 149J  
AUTO BLACK DAKOTA 129J  
MISS WULFETTE 6230F  
GREENWOODPOLLED455ROCKET  
ANDERS GEMINI  
COLE FIRST DOWN 46D  
COLE 69Y

	CE	BW	WW	YW	MA	CM	SC	ST	DC	CW	RE	YG	MS	SMI
EPDs	4	3.5	43	82	14	4	0.6	-	6	37	0.71	-0.09	-0.09	41
	P	P+	P+	P+	P	P	P	-	P	P	P	P	P	

Homozygous black and homozygous polled is this WLR Direct Hit son. His dam is the great producing donor COLE 57N. This prospect is heavy muscled, moderate in his frame and long and wide down his top. BW: 78 lbs.; WW: 654 lbs.; YW: 1,137 lbs.

## PBRs Will Trade 940W

Lot 90

PB Limousin (100/87.6) Bull  
NPM 1945720

04.03.09  
Homo Polled

PBRs 940W  
Homo Black

**WLR DIRECT HIT**  
KRVN NASKAR 013N  
MAGS NIGHT AMBUSH

**COLE 57N**  
ANDERS JAG  
COLE 34G

GPFF BLAQUE RULON  
WL JU JU GAL 149J  
AUTO BLACK DAKOTA 129J  
MISS WULFETTE 6230F  
GREENWOODPOLLED455ROCKET  
ANDERS GEMINI  
COLE FIRST DOWN 46D  
COLE 69Y

	CE	BW	WW	YW	MA	CM	SC	ST	DC	CW	RE	YG	MS	SMI
EPDs	4	3.3	54	87	14	4	0.6	-	6	37	0.71	-0.09	-0.09	41
	P	P+	P+	P+	P	P	P	-	P	P	P	P	P	

940W is a full brother to 939W and is double homozygous. He has a 87 yearling EPD and a .71 for REA. He is thick ended and sound in his structure. 940W weaned at 772 lbs and had a yearling weight of 1161 lbs. BW: 77 lbs.; WW: 772 lbs.; YW: 1,161 lbs.

# Carrouseles PINA COLADA son



Reference dam.  
**CARROUSELS PINA COLADA**

## PBRs Wild Horse 905W

Lot 91

PB Limousin (100/88.3) Bull  
NPM 1938875

01.25.09  
Double Polled

PBRs 905W  
Homo Black

EXLR NEW GENERATION 071M AUTO BLACK DAKOTA 129J  
**MAGS SASQUATCH** EXLR LUVLY 084F  
MAGS FRUITFUL 487M EXLR LIMITED EDITION 765J  
WULFS FRUITFUL 6052F  
AUTO BLACK DAKOTA 129J EXLR DAKOTA 353G  
**CARROUSELS PINA COLADA** DFCL JET SET BPC 34Y  
ELMW GINNIE P58G TCDT MR T.D'S POWER PACK  
ELMW POLLED ECSTASY 67E

	CE	BW	WW	YW	MA	CM	SC	ST	DC	CW	RE	YG	MS	SMI
EPDs	9	1.7	37	79	25	4	0.1	-	17	15	0.31	0.03	-0.08	38
	P	32	27	14	09	P	09	-	P	P	P	P		

Homozygous black and double polled and very stout. 905W is a high performing young sire that has a 1.7 birth EPD and a 25 for milk. He is big footed, heavy boned and stands square on all four corners. This prospect is thick ended and wide topped and we believe will add these same traits to his calves. BW: 74 lbs.; WW: 609 lbs.; YW: 1,209 lbs.

## PBRs Waukomis 539W

Lot 92

Lim-Flex (50/45.3) Bull  
LFM 1944343

04.16.09  
Homo Polled

PBRs 539W  
Double Black

EXLR NEW GENERATION 071M AUTO BLACK DAKOTA 129J  
**MAGS SASQUATCH** EXLR LUVLY 084F  
MAGS FRUITFUL 487M EXLR LIMITED EDITION 765J  
WULFS FRUITFUL 6052F  
BON VIEW NEW DESIGN 878 B/R NEW DESIGN 036  
**SEDGWICKS ERICA 2204** BON VIEW GAMMER 85  
SEDGWICKS ERICA 2205 G A R PARAMOUNT  
SEDGWICKS ERICA 2059

	CE	BW	WW	YW	MA	CM	SC	ST	DC	CW	RE	YG	MS	SMI
EPDs	11	-0.1	32	80	30	3	0.1	-	-	16	-0.10	0.19	0.15	45
	P	P+	P+	P+	P	P	P	-	-	P	P	P	P	

Here is a 50% Lim-Flex the is homozygous polled and double black. He combines calving ease, performance and milk. He has a .15 marbling EPD to compliment those traits. This is a nice balance MAGS Sasquatch son that has plenty of muscle, is long bodied and smooth in that shoulder. BW: 85 lbs.; WW: 621 lbs.; YW: 1,216 lbs.

## PBRs Wipe Out 953W

Lot 93

Lim-Flex (75/67.1) Bull  
LFM 1944014

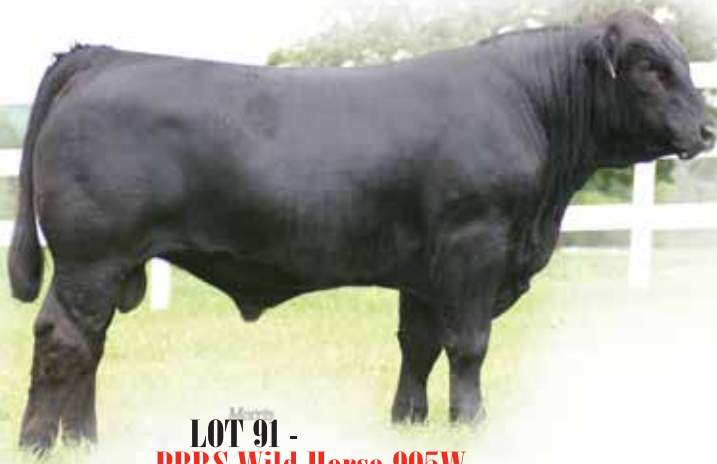
04.12.09  
Double Polled

PBRs 953W  
Black

KRVN NASKAR 013N GPFF BLAQUE RULON  
**SCHILLING'S TALLADEGA** WL JU JU GAL 149J  
RCSX RAINY DAY 80R EF MAIN STAY 541M  
TUBB BENCHMARK 0005K  
RLAY RULER 13N GPFF BLAQUE RULON  
**PBRs TINKER BELL 57T** MISS NATRONA 10D  
BT BLACKCAP LASS 504R BT RIGHT TIME 24J  
BT BLACKCAP LASS 550M

	CE	BW	WW	YW	MA	CM	SC	ST	DC	CW	RE	YG	MS	SMI
EPDs	8	-0.6	35	70	16	1	0.3	-	-	-	-	-	-	0
	P	29	21	08	08	P	P	-	-	-	-	-	-	

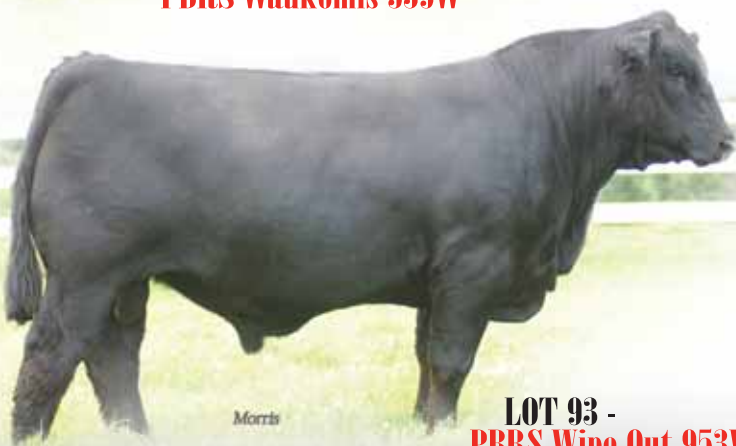
Black and double polled is this Schillings Talladega son out of a RLAY Ruler 13N dam. He has a -0.6 birth weight EPD and weaned at 703 lbs. 953W scanned a 3.38 for marbling and has the look to add uniformity to any calf crop. He is wide in his hip, bold in his rib shape and heavy boned. BW: 68 lbs.; WW: 703 lbs.; YW: 1,199 lbs.



LOT 91 -  
PBRs Wild Horse 905W



LOT 92 -  
PBRs Waukomis 539W



LOT 93 -  
PBRs Wipe Out 953W

Reference sire,  
MAGS SCOTLAND



# Mags SCOTLAND SONS



**LOT 94 -  
PBRs What A Life 941W**

Morris

## PBRs What A Life 941W

**Lot 94**

Lim-Flex (50/44.6) Bull  
LFM1945721

04.04.09  
Homo Polled

PBRs 941W  
Homo Black

<b>MAGS SCOTLAND</b>	BR MIDLAND	TWIN VALLEY PRECISIONE161
	MAGS MARQUEE	BR ROYAL LASS 7036-19
		EXLR DAKOTA 353G
<b>MAGS REVA</b>	EF MAIN STAY 541M	MAGS JEWEL
		AUTO BLACK DAKOTA 129J
		EXLR 231J
	TWIN EAGLESBEMINDMAID638K	GAR PRECISION 1680
		VF 1483 BEMINDFULMAID7025

EPDs	CE	BW	WW	YW	MA	CM	SC	ST	DC	CW	RE	YG	MS	SMI
	6	1.5	45	88	18	2	-0.1	-	-	14	-0.21	0.35	0.40	55
	P	P+	P+	P+	P	P	P	-	-	P	P	P	P	

This 50% Lim-Flex is sired by the National Champion bull MAGS Scotland. He has a 88 yearling EPD and a .40 for marbling. 941W weaned at 776lbs and had a yearling weight of 1,288 lbs. This prospect is long down his top, easy in his flesh and blends really nice in neck and shoulder. BW: 83 lbs.; WW: 776 lbs.; YW: 1,288 lbs.

## PBRs Wideload 956W

**Lot 95**

Lim-Flex (50/45.2) Bull  
LFM 1944017

04.15.09  
Double Polled

PBRs 956W  
Double Black

<b>MAGS SCOTLAND</b>	BR MIDLAND	TWIN VALLEY PRECISIONE161
	MAGS MARQUEE	BR ROYAL LASS 7036-19
		EXLR DAKOTA 353G
<b>JEE TURQUISE 706T</b>	KRVN PRIOR NOTICE 338P	MAGS JEWEL
		GPF BLAQUE RULON
	ROBBINS MISS ERICA 3034	DMAR BONITA 27K
		G A R GRID MAKER
		J O MISS ERICA 180

EPDs	CE	BW	WW	YW	MA	CM	SC	ST	DC	CW	RE	YG	MS	SMI
	6	-0.1	48	88	20	0	0.2	-	-	16	-0.05	0.23	0.31	54
	P	30	23	09	09	P	P	-	-	P	P	P	P	

Double black and double polled and loaded with performance. If you are in the business of selling feeder calves this herd bull will work for you. He weaned at 820lbs and has a .31 for marbling. 956W has a 53 for mainstream terminal index. BW: 60 lbs.; WW: 820 lbs.; YW: 1,156 lbs.

## PBRs UR A Champ 8140U

**Lot 96**

Lim-Flex (75/66.2) Bull  
LFM 1934829

11.15.08  
Homo Polled

PBRs 8140U  
Double Black

<b>MAGS SCOTLAND</b>	BR MIDLAND	TWIN VALLEY PRECISIONE161
	MAGS MARQUEE	BR ROYAL LASS 7036-19
		EXLR DAKOTA 353G
<b>MAGS NATASHA</b>	AUTO BLACK DAKOTA 129J	MAGS JEWEL
		EXLR DAKOTA 353G
	MAGS JULIET	DFLC JET SET BPC 34Y
		CHAZ FIRST CHOICE 6004F
		SIVL SABLE COOKIE 381E

EPDs	CE	BW	WW	YW	MA	CM	SC	ST	DC	CW	RE	YG	MS	SMI
	3	2.6	51	94	23	3	0.2	-	-	21	0.05	0.19	0.18	50
	P	34	28	13	12	P	7	-	-	P	P	P	P	

This 75% Lim-Flex is homozygous polled and double black. He has a great pedigree being sired by MAGS Scotland and out of MAGS Natasha. He has a 51 weaning EPD, a 94 for yearling and a .18 for marbling.

# Mags NADINE 110N sons

## PBRs What I Say 917W

Lot 97

PB Limousin (100/90.0) Bull  
NPM 1938348

01.30.09  
Double Polled

PBRs 917W  
Homo Black

**DHVO TREY 133R**  
GPFf BLAQUE RULON  
AMY JO DHAN 20L

**MAGS NADINE 110N**  
DJ GENTLEMAN IN BLACK  
MAGS LADY ACE

BLACK DIAMOND  
QUAIL RUN RAMONA BP  
BLACK CAT DHAN 152G  
GPFf AMBER JO  
COLE FIRST DOWN 46D  
DJ ESSENCE  
EXLR INTRIGUE 361G  
CHAZ MISS GRETA 7003G

	CE	BW	WW	YW	MA	CM	SC	ST	DC	CW	RE	YG	MS	SMI
EPDs	4	3.0	45	82	23	2	0.6	-	16	20	0.57	-0.08	-0.02	43
	P	35	30	17	12	P	13	-	P	P	P	P	P	

Homozygous black and double polled and sired by DHVO Trey 133R. 917W combines all of the economically important traits with a .6 scrotal EPD and a .57 REA. He is long and lean, clean in his lower 1/3 and stout in his features. BW: 73 lbs.; WW: 760 lbs.; YW: 1,104 lbs.

## PBRs Work Horse 921W

Lot 99

PB Limousin (100/90.0) Bull  
NPM 1938350

02.05.09  
Homo Polled

PBRs 921W  
Homo Black

**DHVO TREY 133R**  
GPFf BLAQUE RULON  
AMY JO DHAN 20L

**MAGS NADINE 110N**  
DJ GENTLEMAN IN BLACK  
MAGS LADY ACE

BLACK DIAMOND  
QUAIL RUN RAMONA BP  
BLACK CAT DHAN 152G  
GPFf AMBER JO  
COLE FIRST DOWN 46D  
DJ ESSENCE  
EXLR INTRIGUE 361G  
CHAZ MISS GRETA 7003G

	CE	BW	WW	YW	MA	CM	SC	ST	DC	CW	RE	YG	MS	SMI
EPDs	4	3.8	41	77	23	2	0.6	-	16	20	0.57	-0.08	-0.02	42
	P	35	30	17	12	P	13	-	P	P	P	P	P	

Homozygous polled and homozygous black. 921W had a 83 lb birth weight and a 1156 yearling weight. This complete prospect has a big ribeye and wide in hip. His dam MAGS Nadine is a tremendous donor cow for our program and we are honored to have you evaluate this set of calves sired by DHVO Trey 133R. BW: 83 lbs.; WW: 649 lbs.; YW: 1,156 lbs.

## PBRs Work A Holic

Lot 101

PB Limousin (100/90.0) Bull  
NPM 1945724

04.11.09  
Homo Polled

PBRs 949W  
Homo Black

**DHVO TREY 133R**  
GPFf BLAQUE RULON  
AMY JO DHAN 20L

**MAGS NADINE 110N**  
DJ GENTLEMAN IN BLACK  
MAGS LADY ACE

BLACK DIAMOND  
QUAIL RUN RAMONA BP  
BLACK CAT DHAN 152G  
GPFf AMBER JO  
COLE FIRST DOWN 46D  
DJ ESSENCE  
EXLR INTRIGUE 361G  
CHAZ MISS GRETA 7003G

	CE	BW	WW	YW	MA	CM	SC	ST	DC	CW	RE	YG	MS	SMI
EPDs	4	3.7	43	80	23	2	0.6	-	16	20	0.57	-0.08	-0.02	43
	P	P+	P+	P+	P	P	P	-	P	P	P	P	P	

As we appraise the DHVO Trey cattle across the country it is plain to see that they are very consistent and functional in their design and make up. This prospect will add performance and muscle and do so in a complete, well balanced package. He too is homozygous black and homozygous polled. BW: 80 lbs.; WW: 709 lbs.; YW: 1,163 lbs.

## PBRs White Oak 918W

Lot 98

PB Limousin (100/90.0) Bull  
NPM 1938349

02.02.09  
Homo Polled

PBRs 918W  
Homo Black

**DHVO TREY 133R**  
GPFf BLAQUE RULON  
AMY JO DHAN 20L

**MAGS NADINE 110N**  
DJ GENTLEMAN IN BLACK  
MAGS LADY ACE

BLACK DIAMOND  
QUAIL RUN RAMONA BP  
BLACK CAT DHAN 152G  
GPFf AMBER JO  
COLE FIRST DOWN 46D  
DJ ESSENCE  
EXLR INTRIGUE 361G  
CHAZ MISS GRETA 7003G

	CE	BW	WW	YW	MA	CM	SC	ST	DC	CW	RE	YG	MS	SMI
EPDs	4	3.6	44	80	23	2	0.6	-	16	20	0.57	-0.08	-0.02	43
	P	35	30	17	12	P	13	-	P	P	P	P	P	

These full brothers are consistent in there frame and design. They combine great EPD's in a functional and structurally sound package. This is a great opportunity to appraise 6 full brother and add superior genetics to your program. BW: 80 lbs.; WW: 705 lbs.; YW: 1,142 lbs.

## PBRs Wam Bam 946W

Lot 100

PB Limousin (100/90.0) Bull  
NPM 1945722

04.09.09  
Homo Polled

PBRs 946W  
Homo Black

**DHVO TREY 133R**  
GPFf BLAQUE RULON  
AMY JO DHAN 20L

**MAGS NADINE 110N**  
DJ GENTLEMAN IN BLACK  
MAGS LADY ACE

BLACK DIAMOND  
QUAIL RUN RAMONA BP  
BLACK CAT DHAN 152G  
GPFf AMBER JO  
COLE FIRST DOWN 46D  
DJ ESSENCE  
EXLR INTRIGUE 361G  
CHAZ MISS GRETA 7003G

	CE	BW	WW	YW	MA	CM	SC	ST	DC	CW	RE	YG	MS	SMI
EPDs	4	3.7	44	80	23	2	0.6	-	16	20	0.57	-0.08	-0.02	43
	P	P+	P+	P+	P	P	P	-	P	P	P	P	P	

946W is a nice prospect that is homozygous black and homozygous polled. He scanned a 13.18 REA and had a birth and weaning ratio over 100. This is a high performing herd bull that is well balanced and strong in his top. BW: 80 lbs.; WW: 728 lbs.; YW: 1,154 lbs.

## PBRs William 960W

Lot 102

PB Limousin (100/90.0) Bull  
NPM 1945725

04.21.09  
Homo Polled

PBRs 960W  
Homo Black

**DHVO TREY 133R**  
GPFf BLAQUE RULON  
AMY JO DHAN 20L

**MAGS NADINE 110N**  
DJ GENTLEMAN IN BLACK  
MAGS LADY ACE

BLACK DIAMOND  
QUAIL RUN RAMONA BP  
BLACK CAT DHAN 152G  
GPFf AMBER JO  
COLE FIRST DOWN 46D  
DJ ESSENCE  
EXLR INTRIGUE 361G  
CHAZ MISS GRETA 7003G

	CE	BW	WW	YW	MA	CM	SC	ST	DC	CW	RE	YG	MS	SMI
EPDs	4	3.2	40	79	23	2	0.6	-	16	20	0.57	-0.08	-0.02	43
	P	P+	P+	P+	P	P	P	-	P	P	P	P	P	

960W is not only complete on paper but just as complete in his look. He had a 76 lb birth weight and a 685 lb weaning weight. He scanned a 3.59 for marbling indicating that if you are targeting a CAB grid with your end product this prospect should produce a high percentage of choice carcasses. BW: 76 lbs.; WW: 685 lbs.; YW: 1,173 lbs.

# DHVO DEUCE SONS



Reference sire,  
DHVO DEUCE

## LOT 103 - PBRS Worn Saddle 89W



Morris

### PBRS Worn Saddle 89W

Lot 103

Lim-Flex (50/44.5) Bull  
LFM 1940513

03.10.09  
Double Polled

PBRS 89W  
Double Black

GPF BLAQUE RULON  
**DHVO DEUCE 132R**  
AMY JO DHAN 20L

HOMEACRES PLATINUM 723  
**HOMEACRES MAY D52**  
HOMEACRES R D J MAY 604

BLACK DIAMOND  
QUAIL RUN RAMONA BP  
BLACK CAT DHAN 152G  
GPF AMBER JO  
G D A R OSCAR 711  
HOMEACRES HANA 103  
V D A R LUCYS BOY  
PHARAOH 3005

	CE	BW	WW	YW	MA	CM	SC	ST	DC	CW	RE	YG	MS	SMI
EPDs	6	-0.1	50	86	25	-1	0.7	-	-	49	0.20	0.22	0.03	44
	15	32	27	16	12	14	08	-	-	P	P	P	P	

Double polled and double black and sired by the popular DHVO Deuce 132R. He is a 50% Lim-Flex that has a -0.1 for birth weight, 50 for weaning and a 25 for milk. Those numbers are complimented by a 707 lb weaning weight and a 1168 lb yearling weight. 89W is smooth in his makeup, wide down his top and thick through his quarter. BW: 83 lbs.; WW: 707 lbs.; YW: 1,168 lbs.

### PBRS Windgust 79W

Lot 105

Lim-Flex (50/44.5) Bull  
LFM 1940512

03.09.09  
Double Polled

PBRS 79W  
Double Black

GPF BLAQUE RULON  
**DHVO DEUCE 132R**  
AMY JO DHAN 20L

G A R PARAMOUNT  
**SEDGWICKS SUSAN 2873**  
SEDGWICKS SUSAN 8733

BLACK DIAMOND  
QUAIL RUN RAMONA BP  
BLACK CAT DHAN 152G  
GPF AMBER JO  
GAR PRECISION 1680  
G A R EXT 2114  
SEDGWICKS C D 701  
SEDGWICKS SUSAN 4060

	CE	BW	WW	YW	MA	CM	SC	ST	DC	CW	RE	YG	MS	SMI
EPDs	8	-1.6	48	89	26	-1	0.6	-	-	51	0.31	0.22	0.14	48
	14	32	27	15	12	13	08	-	-	P	P	P	P	

This young prospect combines calving ease, growth, milk and great carcass traits into a nice package. He is double polled and double black, weaned at 708 lbs and scanned a 13.2 REA. BW: 81 lbs.; WW: 708 lbs.; YW: 1,103 lbs.

### PBRS Western Spur 199W

Lot 104

Lim-Flex (50/44.5) Bull  
LFM 1940518

03.20.09  
Double Polled

PBRS 199W  
Double Black

GPF BLAQUE RULON  
**DHVO DEUCE 132R**  
AMY JO DHAN 20L

HOMEACRES PLATINUM 723  
**HOMEACRES QUEEN D22**  
HOMEACRES QUEEN J460

BLACK DIAMOND  
QUAIL RUN RAMONA BP  
BLACK CAT DHAN 152G  
GPF AMBER JO  
G D A R OSCAR 711  
HOMEACRES HANA 103  
S A F TRAVELER 203  
HOMEACRES QUEEN J734

	CE	BW	WW	YW	MA	CM	SC	ST	DC	CW	RE	YG	MS	SMI
EPDs	8	-1.3	48	79	26	-1	0.7	-	-	46	0.42	0.09	-0.02	43
	14	32	28	16	12	13	08	-	-	P	P	P	P	

Sired by DHVO Deuce 132R and out of a nice Angus cow is 199W. He is double polled and double black and has a 26 milk EPD. This is a very complete Lim-Flex prospect that has plenty of performance and will add hybrid vigor to his calf crops. BW: 81 lbs.; WW: 703 lbs.; YW: 1,146 lbs.

### PBRS 938W

Lot 106

PB Limousin (100/88.6) Bull  
NPM 1953581

04.01.09  
Double Polled

PBRS 938W  
Homo Black

GPF BLAQUE RULON  
**DHVO DEUCE 132R**  
AMY JO DHAN 20L

D & M HOGAN 539H  
**MAGS PRIMROSE**  
MAGS MAIZIE

BLACK DIAMOND  
QUAIL RUN RAMONA BP  
BLACK CAT DHAN 152G  
GPF AMBER JO  
D & M CLASS ACT 563D  
D & M MISS HUGO 539E  
EXLR DAKOTA 353G  
MAGS GO IN STYLE

	CE	BW	WW	YW	MA	CM	SC	ST	DC	CW	RE	YG	MS	SMI
EPDs	7	0.6	61	99	29	1	1.1	-	13	40	0.57	0.02	-0.02	47
	P	P+	P	P	P	P	P	-	P	P	P	P	P	

Homozygous black and double polled is this purebred prospect. He has a 99 yearling EPD, a 29 for milk and a .57 for REA. 938W is heavy muscled, sound footed and is fluent in his movement. BW: 62 lbs.; WW: 689 lbs.; YW: 1,070 lbs.

# KAJO RESPONDER SONS



Reference sire,  
**KAJO RESPONDER**



**LOT 107 -  
PBRs Wimbledon 928W**



**LOT 109 -  
PBRs Wheres The Party 954**

## PBRs Wheres The Party 954 **Lot 109**

PB Limousin (100/88.2) Bull 04.13.09 PBRs 954W  
NPM 1944015 Double Polled Double Black

**DHVO ACE 128R** GPFf BLAQUE RULON  
AMY JO DHAN 20L  
**MAGS MAIZIE** EXLR DAKOTA 353G  
MAGS GO IN STYLE

BLACK DIAMOND  
QUAIL RUN RAMONA BP  
BLACK CAT DHAN 152G  
GPFf AMBER JO  
WULF'S COUNT DOWN 9251C  
CANE RIDGE DAPHNE 011D  
COLE FIRST DOWN 46D  
WULF'S MANDARIN 1121A

	CE	BW	WW	YW	MA	CM	SC	ST	DC	CW	RE	YG	MS	SMI
EPDs	3	4.4	53	93	29	1	0.9	-	11	19	0.45	-0.05	-0.08	43
	16	32	27	15	13	16	11	-	P	P	P	P	P	

Here is a big numbered, high performing herd sire prospect that is double polled and double black. This purebred bull has a 53 weaning EPD and a 93 for yearling EPD. Along with tremendous growth is a 28 for milk and a .45 for REA. 954W is extremely wide down his top and thick through his quarter. BW: 80 lbs.; WW: 775 lbs.; YW: 1,189 lbs.

## PBRs Wimbledon 928W

**Lot 107**

PB Limousin (100/90.6) Bull 02.21.09 PBRs 928W  
NPM 1944011 Polled Double Black

JCL LODESTAR 27L  
**KAJO RESPONDER 120R**  
KAJO SHERYL SWOOPS 11H

CARROUSELS PEAK POWER  
**PBRs TOO HOT 709T**  
MAGS NEW GAMES 169N

HUNTS HI-LITER 245G  
LOGAN'S CHEERLEADER 280G  
HC POLLED I 102A  
KAJO FANCY 3F  
GPFf BLAQUE RULON  
HC CHERISH  
MAGS LITTLE BROTHER  
MAGS GAMES WE PLAY 245L

	CE	BW	WW	YW	MA	CM	SC	ST	DC	CW	RE	YG	MS	SMI
EPDs	6	3.5	50	90	20	3	0.7	-	15	29	0.48	0.00	-0.05	43
	19	33	28	18	14	18	14	-	P	P	P	P	P	

Sired by KAJO Responder 120R and out of a Carrouseles Peak Power dam is this young herd sire prospect. He is polled and double black and has great growth numbers. His weaning weight was 766lbs and he scanned a 14.45 REA. If you need to add muscle and performance then look at 928W on sale day. BW: 70 lbs.; WW: 766 lbs.; YW: 1,193 lbs.

## PBRs What A Night 923W

**Lot 108**

PB Limousin (100/90.6) Bull 02.09.09 PBRs 923W  
NPM 1944009 Double Polled Black

JCL LODESTAR 27L  
**KAJO RESPONDER 120R**  
KAJO SHERYL SWOOPS 11H

CARROUSELS PEAK POWER  
**PBRs TAYLOR 705T**  
MAGS NEW GAMES 169N

HUNTS HI-LITER 245G  
LOGAN'S CHEERLEADER 280G  
HC POLLED I 102A  
KAJO FANCY 3F  
GPFf BLAQUE RULON  
HC CHERISH  
MAGS LITTLE BROTHER  
MAGS GAMES WE PLAY 245L

	CE	BW	WW	YW	MA	CM	SC	ST	DC	CW	RE	YG	MS	SMI
EPDs	7	2.7	48	86	20	3	0.7	-	15	29	0.48	0.00	0.05	43
	19	33	23	18	13	18	P	-	P	P	P	P	P	

This double polled purebred herd sire combines a moderate birth weight with adequate performance and milk. 923W is complete, rugged and sound and will compliment any program. BW: 68 lbs.; WW: 855 lbs.; YW: 1,108 lbs.

## PBRs Work Force 961W

**Lot 110**

Lim-Flex (50/45.3) Bull 04.23.09 PBRs 961W  
LFM 1945726 Double Polled Homo Black

B/R NEW DESIGN 036  
**G A R PREDESTINED**  
G A R EXT 4206

GPFf BLAQUE RULON  
**WLR RENDEZVOUS 050R**  
KEHG JULIET 10H

V D A R NEW TREND 315  
B/R BLACKCAP EMPRESS 76  
N BAR EMULATION EXT  
G A R 6807 TRAVELER 1432  
BLACK DIAMOND  
QUAIL RUN RAMONA BP  
WULFS RAMBLER 8400X  
TLTL POLLED PEACHES 007B

	CE	BW	WW	YW	MA	CM	SC	ST	DC	CW	RE	YG	MS	SMI
EPDs	6	0.8	47	92	27	2	0.3	-	10	29	0.15	0.26	0.32	54
	P	P+	P	P	P	P	P	-	P	P	P	P	P	

Homozygous black and double polled is this 50% Lim-Flex sired by G A R Predestined out of the proven donor WLR Rendezvous 050R. This prospect has a 92 yearling EPD, 27 for milk, .32 for marbling and a 54 SMTI. 961W weaned at 755 lbs and scanned a 3.83 IMF. BW: 78 lbs.; WW: 755 lbs.; YW: 1,243 lbs.





**LOT 114 -  
PBRs Winter Classic 569W**

Morris

**PBRs Working Ranch 963W** **Lot 111**

Lim-Flex (50/46.3) Bull 05.02.09 Homo Polled PBRs 963W Homo Black

**MAGS TWAIN** AUTO DOLLAR GENERAL 122R LVLS SECRET WEAPON 4408K  
THOMAS PATRICIA 1911 GAR PRECISION 1680  
THOMAS PATRICIA 1176  
**BOHI LIM FLEX 21P** CHTT 5434D YKCC POLLED NORTHERN 204B  
MAGS4329K R R SCOTCHCAP 9440  
DAM NOT ON FILE

	CE	BW	WW	YW	MA	CM	SC	ST	DC	CW	RE	YG	MS	SMI
EPDs	6	-0.5	50	92	23	1	0.4	-	-	33	0.06	0.28	0.30	54
	P	P+	P+	P+	P	P	P	-	-	P	P	P	P	

This MAGS Twain son is homozygous black and homozygous polled and is a 50% Lim-Flex. The combination of calving ease, growth, milk and carcass traits in this young prospect make him a must see on sale day. He is deep in his rib, wide chested, has a large scrotal and is sound on his feet and legs. BW: 65 lbs.; WW: 766; YW: 1,220 lbs.

**PBRs Wendell 973W** **Lot 113**

PB Limousin (100/86.5) Bull 05.22.09 Double Polled PBRs 973W Double Black

**RLAY RULER 13N** GPFF BLAQUE RULON BLACK DIAMOND  
MISS NATRONA 10D QUAIL RUN RAMONA BP  
LKCC TOMAHAWKS TOUCHDOWN  
**EXLR ECLIPSE 7231N** DJ GENTLEMAN IN BLACK HONY POLLED QUEEN 903X  
EXLR 568G COLE FIRST DOWN 46D  
DJ ESSENCE  
WULF'S COUNT DOWN 9251C  
EXLR 507E

	CE	BW	WW	YW	MA	CM	SC	ST	DC	CW	RE	YG	MS	SMI
EPDs	7	0.2	35	68	17	3	0.4	-	-	10	0.43	-0.08	-0.07	39
	P	P	P	P	P	P	P	-	-	P	P	P	P	

Rugged and durable describe this double polled and double black herd sire prospect. He is sired by our herd sire RLAY Ruler 13N and out of a DJ Gentlemen In Black daughter. This purebred herd sire will add value and uniformity to help improve the marketability of your calves.

**PBRs Willy 970W** **Lot 112**

Lim-Flex (75/66.4) Bull 05.16.09 Double Polled PBRs 970W Double Black

**PBRs SAFE BET 6123** GPFF BLAQUE RULON BLACK DIAMOND  
BT HEATHER 292M QUAIL RUN RAMONA BP  
B T ULTRAVOX 297E  
**PBRs TWINKIE 731T** AUTO DOLLAR GENERAL 122R FELLMAN HEATHER 8416  
CARROUSELS PINA COLADA LVLS SECRET WEAPON 4408K  
AUTO KYRIA 232K  
AUTO BLACK DAKOTA 129J  
ELMW GINNIE P58G

	CE	BW	WW	YW	MA	CM	SC	ST	DC	CW	RE	YG	MS	SMI
EPDs	6	1.3	51	99	24	2	0.4	-	-	21	0.29	0.11	0.01	45
	P	29	17	11	08	P	P	-	-	P	P	P	P	

Here is a nice prospect that is heavy muscled and has a great disposition. He is double polled and double black, has a 51 weaning and a 98 yearling EPD and is positive for carcass traits. BW: 78 lbs.; YW: 1,195 lbs.

**PBRs Winter Classic 569W** **Lot 114**

Lim-Flex (50/44.3) Bull 04.20.09 Double Polled PBRs 569W Double Black

**PBRs SURE THING 644S** KRNV NASKAR 013N GPFF BLAQUE RULON  
MAGS NATASHA WL JU JU GAL 149J  
AUTO BLACK DAKOTA 129J  
**SEDGWICKS PRIDE 3465** BON VIEW NEW DESIGN 1407 MAGS JULIET  
B/R NEW DESIGN 036  
SEDGWICKS TRAVELER 7 BON VIEW PRIDE 664  
SEDGWICKS PRIDE 92

	CE	BW	WW	YW	MA	CM	SC	ST	DC	CW	RE	YG	MS	SMI
EPDs	8	-2.2	45	81	25	2	0.4	-	-	12	-0.02	0.18	0.13	45
	P	P+	P+	P+	P	P	P	-	-	P	P	P	P	

Here is a very complete prospect. He is long down his top, level in his hip and smooth in his shoulder. We love he foot size, strength of structure and amount of rib that 569W has. He combines a great phenotype with a nice balanced set of EPD's. BW: 76 lbs.; WW: 751 lbs.; YW: 1,189 lbs.

## PBRS Wells Fargo 289W

Lot 115

Lim-Flex (50/44.5) Bull  
LFM 1940525

03.30.09  
Homo Polled

PBRS 289W  
Double Black

GPF BLAQUE RULON  
**DHVO TREY 133R**  
AMY JO DHAN 20L

BLACK DIAMOND  
QUAIL RUN RAMONA BP  
BLACK CAT DHAN 152G  
GPF AMBER JO  
SEDGWICKS WORKMAN 3706  
CEDARCREST ERICA 518  
W C C POWERSTROKE 165  
SEDGWICKS RUBY 3135

ROYAL WORKHORSE 001  
**SEDGWICKS RUBY 3349**  
SEDGWICKS RUBY 3499

	CE	BW	WW	YW	MA	CM	SC	ST	DC	CW	RE	YG	MS	\$MI
EPDs	4	2.3	49	91	25	-2	0.4	-	-	19	0.25	-0.03	-0.14	40
	12	32	27	14	12	11	08	-	-	P	P	P	P	P

This 50% Lim-Flex herd sire is homozygous polled and double black. He has a 91 for yearling EPD, a 25 for milk and a .4 for scrotal. 289W weaned at 728 lbs and scanned a 3.4 for marbling. BW: 90 lbs.; WW: 728 lbs.; YW: 1,146 lbs.

## PBRS 709W

Lot 116

Lim-Flex (50/44.3) Bull  
LFM 1953580

05.26.09  
Double Polled

PBRS 709W  
Double Black

KRVN NASKAR 013N  
**PBRS SURE THING 644S**  
MAGS NATASHA

GPF BLAQUE RULON  
WL JU JU GAL 149J  
AUTO BLACK DAKOTA 129J  
MAGS JULIET  
R R SCOTCHCAP 9440  
CAR DON MISS DEVOTIONB236  
S V F MINOTAUR 250B  
BASIN HEIRESS 963A

RR 9440 SCOTCH CAP 1483  
**SEDGWICKS JODY 235**  
HIGH FIELD JODY 3A5

	CE	BW	WW	YW	MA	CM	SC	ST	DC	CW	RE	YG	MS	\$MI
EPDs	6	0.3	41	85	22	2	0.3	-	-	18	0.13	0.23	0.10	44
	P	P+	P	P	P	P	P	-	-	P	P	P	P	P

This young prospect is double black and double polled. He is sired by PBRS Sure Thing 644S and out of a Scotch Cap 1483 dam. This 50% Lim-Flex herd sire has a 85 yearling EPD a .13 REA and a .10 for marbling. He is solid in his makeup, has plenty of muscle and will sire high performing calves. BW: 79 lbs.; WW: 690 lbs.; YW: 1,000 lbs.

# Reference Sires



PBRS Upper Echelon 820U



PBRS 418U

## PBRS Upper Echelon 820U

Reference A

Lim-Flex (50/44.8) Bull  
LFM 1909335

03.05.08  
Homo Polled

PBRS 820U  
Homo Black

EF MAIN STAY 541M  
**EF SMACK DOWN 764S**  
M L PRUDENCE 427

AUTO BLACK DAKOTA 129J  
EXLR 231J  
V A R GATEWAY 4101  
M L PRUDENCE 9014  
GPF BLAQUE RULON  
TUBB FIRST CLASS 666F  
BT TRAVELER 132K  
COCHANGUS ROSE J3

CARROUSELS PURE POWER  
**PBRS SPECIAL OCCASION6109**  
BT ROSE 497N

	CE	BW	WW	YW	MA	CM	SC	ST	DC	CW	RE	YG	MS	\$MI
EPDs	7	2.7	56	98	25	2	0.2	-	-	5	-0.09	0.12	0.02	47
	P	31	25	11	10	P	P	-	-	18	16	16	16	

## PBRS 418U

Reference B

Lim-Flex (50/45.3) Bull  
LFM 1922893

04.15.08  
Homo Polled

PBRS 418U  
Double Black

EXLR NEW GENERATION 071M  
**MAGS SASQUATCH**  
MAGS FRUITFUL 487M

AUTO BLACK DAKOTA 129J  
EXLR LUVLY 084F  
EXLR LIMITED EDITION 765J  
WULFS FRUITFUL 6052F  
R R SCOTCHCAP 9440  
CAR DON MISS DEVOTIONB236  
S V F MINOTAUR 250B  
BASIN HEIRESS 963A

RR 9440 SCOTCH CAP 1483  
**SEDGWICKS JODY 235**  
HIGH FIELD JODY 3A5

	CE	BW	WW	YW	MA	CM	SC	ST	DC	CW	RE	YG	MS	\$MI
EPDs	8	0.5	37	80	26	2	0.0	-	13	20	0.03	0.27	0.19	46
	13	34	28	12	12	12	04	-	P	P	P	P	P	

## PBRS UR All Net 8147U

Reference C

PB Limousin (100/87.6) Bull  
NPM 1934834

11.17.08  
Double Polled

PBRS 8147U  
Homo Black

GPF BLAQUE RULON  
**DHVO DEUCE 132R**  
AMY JO DHAN 20L

BLACK DIAMOND  
QUAIL RUN RAMONA BP  
BLACK CAT DHAN 152G  
GPF AMBER JO  
EXLR DAKOTA 353G  
DFLC JET SET BPC 34Y  
TCDT MR T.D.'S POWER PACK  
ELMW POLLED ECSTASY 67E

AUTO BLACK DAKOTA 129J  
**CARROUSELS PINA COLADA**  
ELMW GINNIE P58G

	CE	BW	WW	YW	MA	CM	SC	ST	DC	CW	RE	YG	MS	\$MI
EPDs	6	2.4	52	96	24	1	0.9	-	15	45	0.60	0.05	-0.12	41
	P	36	31	17	11	P	P	-	P	P	P	P	P	

**PBRS Take This 744T**



**Schilling's Whiplash**

**PBRS Take This 744T** *Reference D*

PB Limousin (100/88.4) Bull 05.03.07 PBRS 744T  
NPM 1897472 Homo Polled Homo Black

**AUTO DOLLAR GENERAL 122R** LVLS SECRET WEAPON 4408K LVLS FARMER 4G  
AUTO KYRIA 232K LVLS 408H  
ANDERS JAG AUTO HACKETT 702H  
**MAGS NAPELLA** WULFS HAPPINESS 8136H  
AUTO CITY NIGHTS 214H GREENWOODPOLLED455ROCKET  
ANDERS GEMINI  
MISS WOLFETTE 9049X

	CE	BW	WW	YW	MA	CM	SC	ST	DC	CW	RE	YG	MS	\$MI
EPDs	6	2.2	51	96	20	7	0.5	-	5	30	0.37	0.10	0.13	49
	25	27	25	20	14	24	15	-	P	P	P	P	P	

**Schilling's Whiplash** *Reference E*

Lim-Flex (50/46.5) Bull 02.21.09 CDSX 17W  
LFM 1937620 Homo Polled Black

**DCC NEW LOOK 101** O C C GENESIS 872G O C C DOCTOR 940D  
O C C ANCHOR 771A BLACKBIRD OF RR 1204  
O C C DIXIE ERICA 814G O C C DIXIE ERICA 764C  
WULF'S COUNT DOWN 9251C  
**CDSX MARILYN** CANE RIDGE DAPHNE 011D  
MISS RDSX JEWEL RCSX CASH BOX  
MISS RDSX 19D

	CE	BW	WW	YW	MA	CM	SC	ST	DC	CW	RE	YG	MS	\$MI
EPDs	1.4	47	80	29	-	-	-	-	-	11	0.10	0.01	-0.07	41
	35	23	16	17	-	-	-	-	-	P	P	P	P	

**MAGS Unmasked Man** *Reference G*

Lim-Flex (75/67.5) Bull 04.15.08 MAGS 4613U  
LFM 1906786 Double Polled Homo Black

**GPFF BLAQUE RULON** BLACK DIAMOND  
QUAIL RUN RAMONA BP CANE RIDGE BLACK DRAK  
WULFS DIADEM 4260D  
BR MIDLAND LKCC TOMAHAWKS TOUCHDOWN  
AMBL FAVORITE GIRL 36W  
**MAGS PARADISE CANYON** TWIN VALLEY PRECISIONE161  
BR ROYAL LASS 7036-19  
WULFS QUARTERBACK 4222B  
MISS WOLFETTE 0278Y

	CE	BW	WW	YW	MA	CM	SC	ST	DC	CW	RE	YG	MS	\$MI
EPDs	6	3.4	52	93	17	-2	0.4	-	12	33	0.56	0.07	0.12	49
	P	36	31	21	20	P	16	-	P	24	23	23	23	

**PBRS Untitled 8153U** *Reference I*

PB Limousin (100/87.6) Bull 11.19.08 PBRS 8153U  
NPM 1934838 Double Polled Homo Black

**DHVO DEUCE 132R** GPFF BLAQUE RULON BLACK DIAMOND  
AMY JO DHAN 20L BLACK CAT DHAN 152G  
AUTO BLACK DAKOTA 129J GPFF AMBER JO  
**CARROUSELS PINA COLADA** EXLR DAKOTA 353G  
ELMW GINNIE P58G DFLC JET SET BPC 34Y  
TCDT MR.T.D'S POWER PACK  
ELMW POLLED ECSTASY 67E

	CE	BW	WW	YW	MA	CM	SC	ST	DC	CW	RE	YG	MS	\$MI
EPDs	6	3.4	67	113	24	1	0.9	-	15	45	0.60	0.05	-0.12	45
	P	36	31	17	11	P	13	-	P	P	P	P	P	

**PBRS UR The Bomb 8155U** *Reference F*

Lim-Flex (50/45.3) Bull 11.20.08 PBRS 8155U  
LFM 1934840 Double Polled Homo Black

**S A V NET WORTH 4200** S A V 8180 TRAVELER 004 SITZ TRAVELER 8180  
S A V MAY 2410 SAF FOREVER LADY 8003  
SAF 598 BANDO 5175  
S A V MAY 6269  
**WLR RENDEZVOUS 050R** GPFF BLAQUE RULON BLACK DIAMOND  
KEHG JULIET 10H QUAIL RUN RAMONA BP  
WULFS RAMBLER 8400X  
TITL POLLED PEACHES 007B

	CE	BW	WW	YW	MA	CM	SC	ST	DC	CW	RE	YG	MS	\$MI
EPDs	4	0.9	53	101	29	1	-	-	10	19	0.14	0.23	0.14	49
	P	35	30	20	17	P	-	-	P	P	P	P	P	

**MAGS Tobacco** *Reference H*

PB Limousin (100/89.6) Bull 01.08.07 MAGS 1555T  
NPM 1877545 Homo Polled Homo Black

**JCL LODESTAR 27L** HUNTS HI-LITER 245G WADDLES COBALT 3106  
LOGAN'S CHEERLEADER 280G TNUH MISS C245  
EXLR INTRIGUE 361G COLE FIRST DOWN 46D  
**MAGS CHEERS 304L** TTCC CONFIDENCE MAKER  
MAGS GOOD TIMES WULF'S COUNT DOWN 9251C  
CANE RIDGE DAPHNE 011D  
COLE FIRST DOWN 46D  
MAGS CHEERS

	CE	BW	WW	YW	MA	CM	SC	ST	DC	CW	RE	YG	MS	\$MI
EPDs	11	-0.1	43	91	21	9	0.8	-	20	16	-0.07	0.23	0.12	46
	30	40	35	23	20	28	19	-	P	25	24	24	24	

**PBRS U Blow My Mind 8156U** *Reference J*

PB Limousin (100/87.6) Bull 11.22.08 PBRS 8156U  
NPM 1934841 Double Polled Homo Black

**DHVO DEUCE 132R** GPFF BLAQUE RULON BLACK DIAMOND  
AMY JO DHAN 20L BLACK CAT DHAN 152G  
AUTO BLACK DAKOTA 129J GPFF AMBER JO  
**CARROUSELS PINA COLADA** EXLR DAKOTA 353G  
ELMW GINNIE P58G DFLC JET SET BPC 34Y  
72 TCDT MR.T.D'S POWER PACK  
ELMW POLLED ECSTASY 67E

	CE	BW	WW	YW	MA	CM	SC	ST	DC	CW	RE	YG	MS	\$MI
EPDs	6	2.8	57	101	24	1	0.8	-	15	45	0.60	0.05	-0.12	42
	P	36	31	17	11	P	13	-	P	P	P	P	P	



**R&R**  
**Marketing Company**  
 P.O. Box 281677  
 Nashville, TN 37228

(L#2845)

**FIRST CLASS**  
**PRE-SORTED**  
**PAID**  
 Montezuma, Iowa  
 Permit No. 30

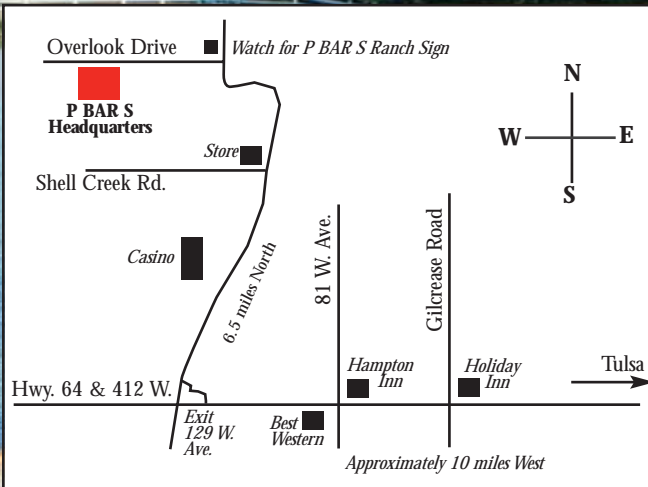
Catalog  
 designed by



# Proof of Progress III

## Limousin & Lim-Flex Sale

**Saturday, October 2, 2010**  
 3:30 PM • at the Ranch, Sand Springs, OK



**Directions:**  
**From Tulsa, OK** - Take Hwy. 64 - 412 West to Sand Springs  
 Exit at 129 W. Ave. and follow map.

**From Oklahoma City, OK** - Turnpike I-44 to Sapulpa Exit, Hwy.  
 97; got North to Sand Springs; cross over Ark River Bridge and take  
 Hwy. 6 & 412 West 1 mile to Exit 129 W. Ave. and follow map.